



Chipsmall Limited consists of a professional team with an average of over 10 year of expertise in the distribution of electronic components. Based in Hongkong, we have already established firm and mutual-benefit business relationships with customers from,Europe,America and south Asia,supplying obsolete and hard-to-find components to meet their specific needs.

With the principle of “Quality Parts,Customers Priority,Honest Operation,and Considerate Service”,our business mainly focus on the distribution of electronic components. Line cards we deal with include Microchip,ALPS,ROHM,Xilinx,Pulse,ON,Everlight and Freescale. Main products comprise IC,Modules,Potentiometer,IC Socket,Relay,Connector.Our parts cover such applications as commercial,industrial, and automotives areas.

We are looking forward to setting up business relationship with you and hope to provide you with the best service and solution. Let us make a better world for our industry!



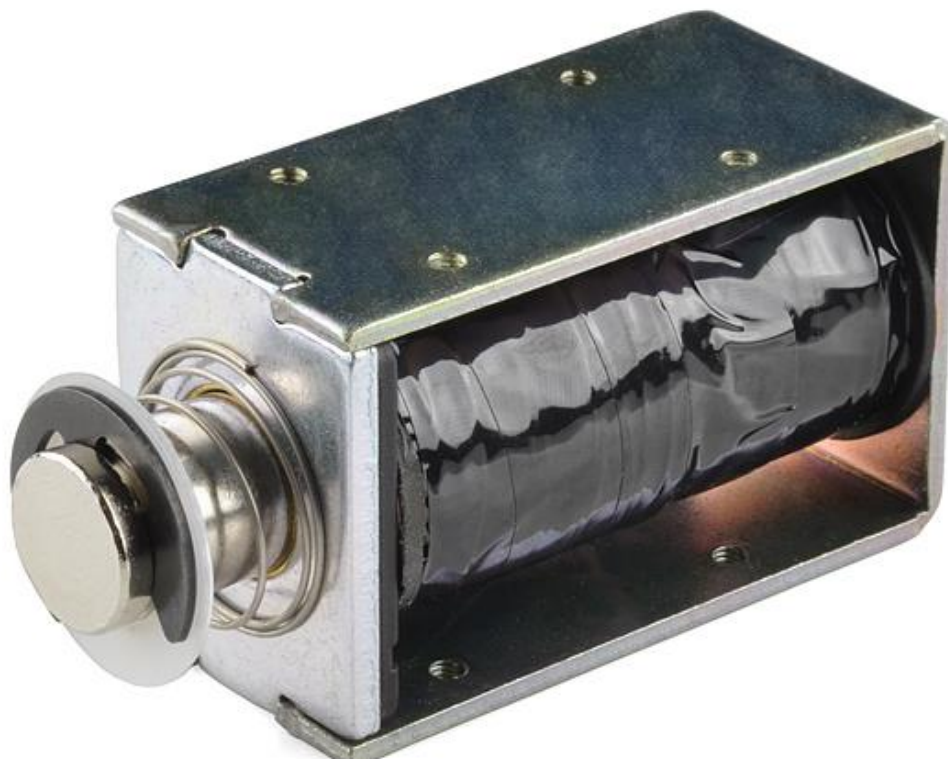
Contact us

Tel: +86-755-8981 8866 Fax: +86-755-8427 6832

Email & Skype: info@chipsmall.com Web: www.chipsmall.com

Address: A1208, Overseas Decoration Building, #122 Zhenhua RD., Futian, Shenzhen, China





Solenoid - 36v

ROB-10391 ROHS

Solenoids are a great way to induce linear motion for pushing, pulling or controlling switches and levers. According to the datasheet this solenoid is rated for 36V but they work like a charm at 12V. We've been controlling them with the Arduino Power Driver Shield, there's even some example code below. With a throw of 10mm these solenoids are great for all kinds of motion applications such as actuating door latches, automating percussion instruments or just poking people.

At 12 volts these Solenoids draw 650mA, while at 36 volts they draw 1.85A.

Note: The datasheet indicates a throw of 25mm however we've measured a throw of 10mm.

- | |
|--|
| <ul style="list-style-type: none">• Datasheet |
| <ul style="list-style-type: none">• Example Code |



<https://www.sparkfun.com/products/10391> 5-15-18