



Chipsmall Limited consists of a professional team with an average of over 10 year of expertise in the distribution of electronic components. Based in Hongkong, we have already established firm and mutual-benefit business relationships with customers from,Europe,America and south Asia,supplying obsolete and hard-to-find components to meet their specific needs.

With the principle of "Quality Parts,Customers Priority,Honest Operation,and Considerate Service",our business mainly focus on the distribution of electronic components. Line cards we deal with include Microchip,ALPS,ROHM,Xilinx,Pulse,ON,Everlight and Freescale. Main products comprise IC,Modules,Potentiometer,IC Socket,Relay,Connector.Our parts cover such applications as commercial,industrial, and automotives areas.

We are looking forward to setting up business relationship with you and hope to provide you with the best service and solution. Let us make a better world for our industry!



Contact us

Tel: +86-755-8981 8866 Fax: +86-755-8427 6832

Email & Skype: info@chipsmall.com Web: www.chipsmall.com

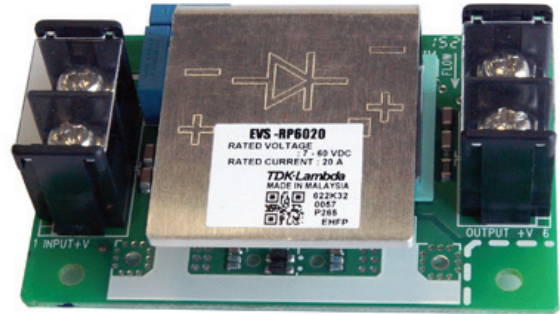
Address: A1208, Overseas Decoration Building, #122 Zhenhua RD., Futian, Shenzhen, China



20A Blocking Diode Module

Features

- ◆ Provides Reverse Current Protection
- ◆ Low Voltage Drop ORing FET
- ◆ Compact Size
- ◆ Open Frame or L Bracket Construction

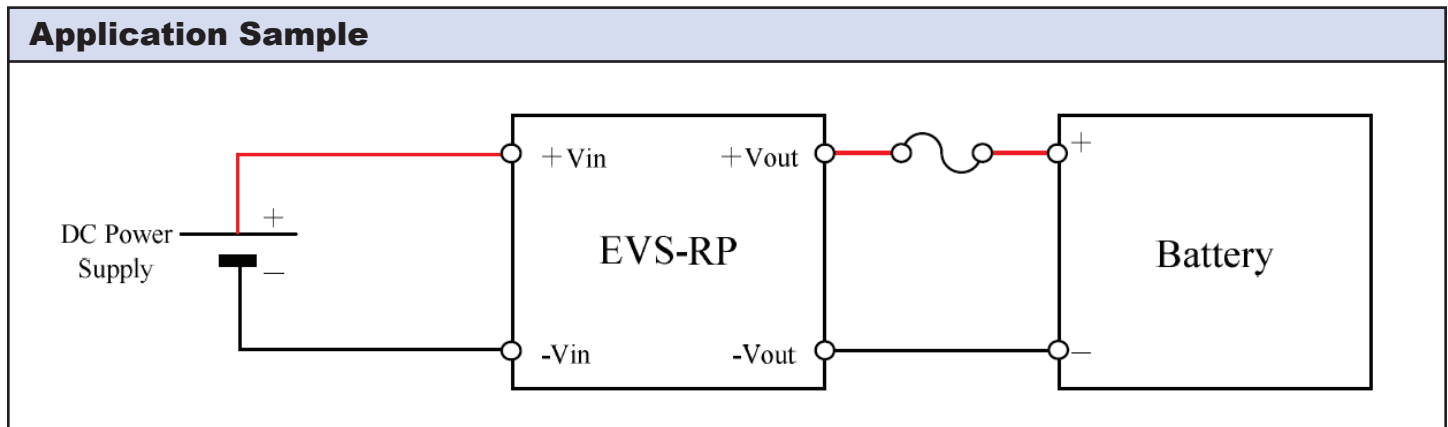


Key Market Segments & Applications

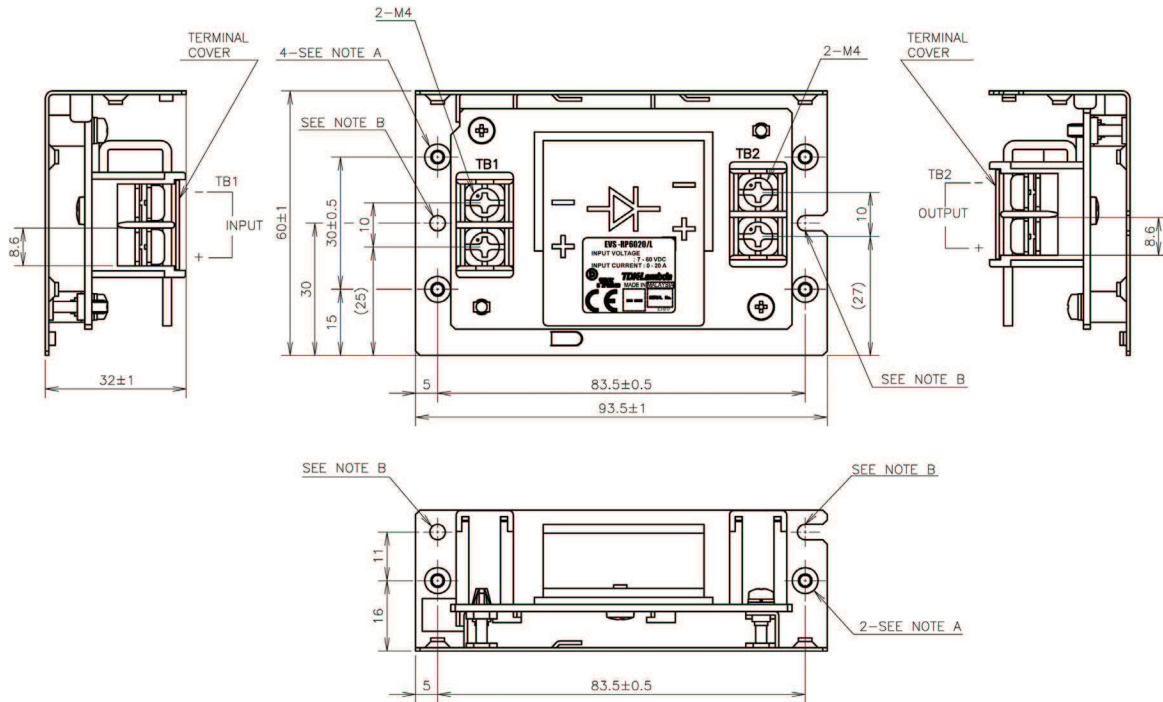


Specifications		
Model	EVS-RP6020	
Input Voltage Range	VDC	7 - 60VDC
Maximum Current	A	20A
Voltage Drop	VDC	0.2V
Maximum Reverse Current	μ A	50 μ A
Parallel Operation	-	Maximum 2 units, no current sharing function
Cooling	-	Convection or Forced Air
Operating Temperature	$^{\circ}$ C	Convection Cooling: -20 to +74 $^{\circ}$ C, derate linearly to 50% load from 50 to 74 $^{\circ}$ C Forced Air (≥ 1.4 m/s) : -20 to +74 $^{\circ}$ C, derate linearly to 60% load from 60 to 74 $^{\circ}$ C
Storage Temperature	$^{\circ}$ C	-40 to +85 $^{\circ}$ C
Humidity (non condensing)	%RH	Operating: 20 - 90%RH, Storage: 10 - 90%RH
Withstand Voltage	VAC	Input or output to ground: 500VAC for 1 minute
Isolation Resistance	M Ω	Input or output to ground >100M Ω at 25 $^{\circ}$ C, 70%RH and 500VDC
Vibration (non operating)	-	10-55Hz (sweep for 1 min), 19.6m/s ² constant X, Y, Z each for 1 hour
Shock	-	196m/s ²
Safety Agency Certifications	-	UL60950-1, CSA60950-1, EN60950-1, CE mark for LVD and RoHS2
Size	mm/in	Open Frame: 50 x 26 x 77.5mm, 1.97 x 1.02 x 3.05" L Bracket: 60 x 32 x 93.5mm, 2.36 x 1.26 x 3.68"
Weight	g	Open frame: 60g, L Bracket: 100g
Warranty	yrs	Five Years

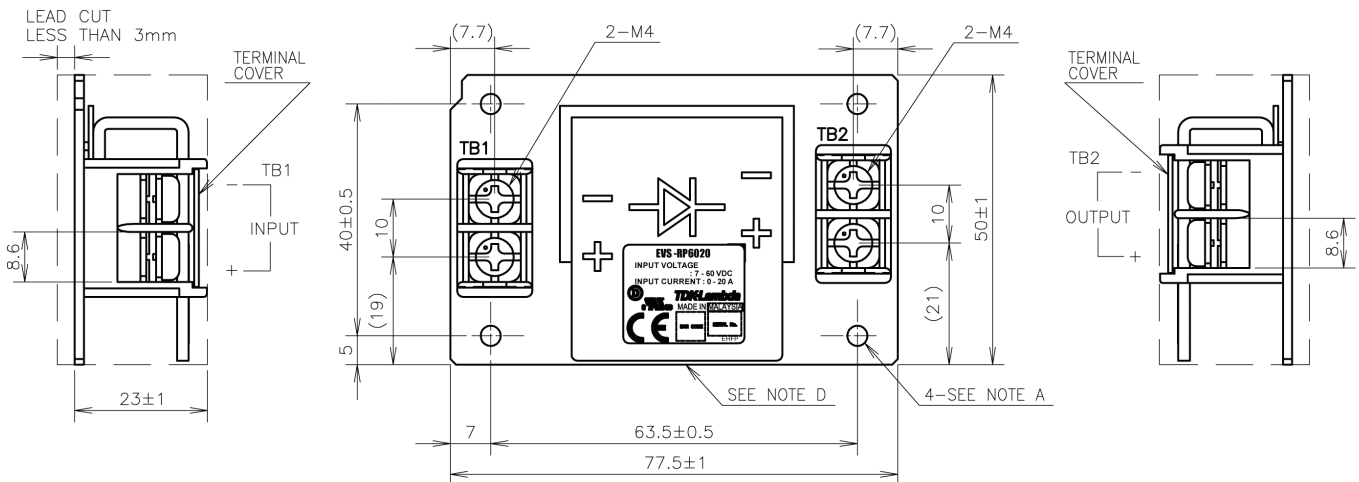
Note: See Installation Manual for full details, test methods of parameters and application notes.



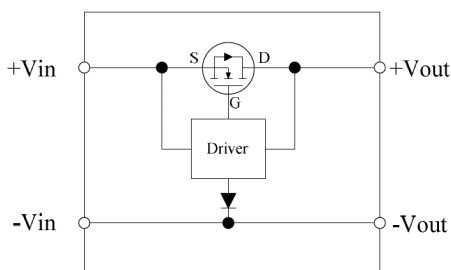
Outline Drawing EVS-RP6020/L (L bracket)



Outline Drawing EVS-RP6020 (Open frame)



Block Diagram



Options

Suffix	Description
-	Open frame construction
/L	L bracket construction

For Additional Information, please visit
us.tdk-lambda.com/lp/products/evs-series.htm

