



Chipsmall Limited consists of a professional team with an average of over 10 year of expertise in the distribution of electronic components. Based in Hongkong, we have already established firm and mutual-benefit business relationships with customers from,Europe,America and south Asia,supplying obsolete and hard-to-find components to meet their specific needs.

With the principle of “Quality Parts,Customers Priority,Honest Operation,and Considerate Service”,our business mainly focus on the distribution of electronic components. Line cards we deal with include Microchip,ALPS,ROHM,Xilinx,Pulse,ON,Everlight and Freescale. Main products comprise IC,Modules,Potentiometer,IC Socket,Relay,Connector.Our parts cover such applications as commercial,industrial, and automotives areas.

We are looking forward to setting up business relationship with you and hope to provide you with the best service and solution. Let us make a better world for our industry!



## Contact us

Tel: +86-755-8981 8866 Fax: +86-755-8427 6832

Email & Skype: info@chipsmall.com Web: www.chipsmall.com

Address: A1208, Overseas Decoration Building, #122 Zhenhua RD., Futian, Shenzhen, China

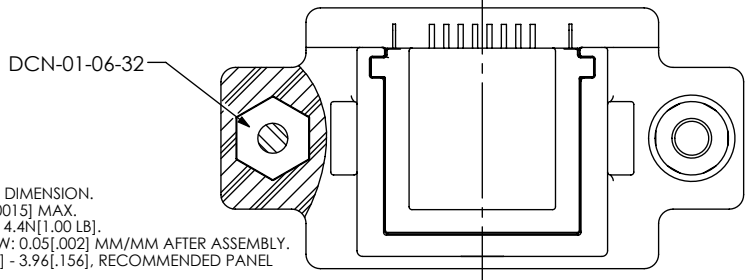
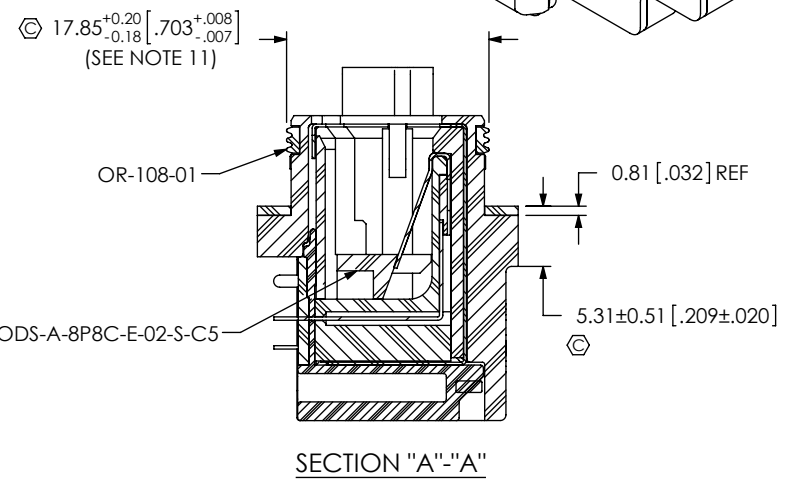
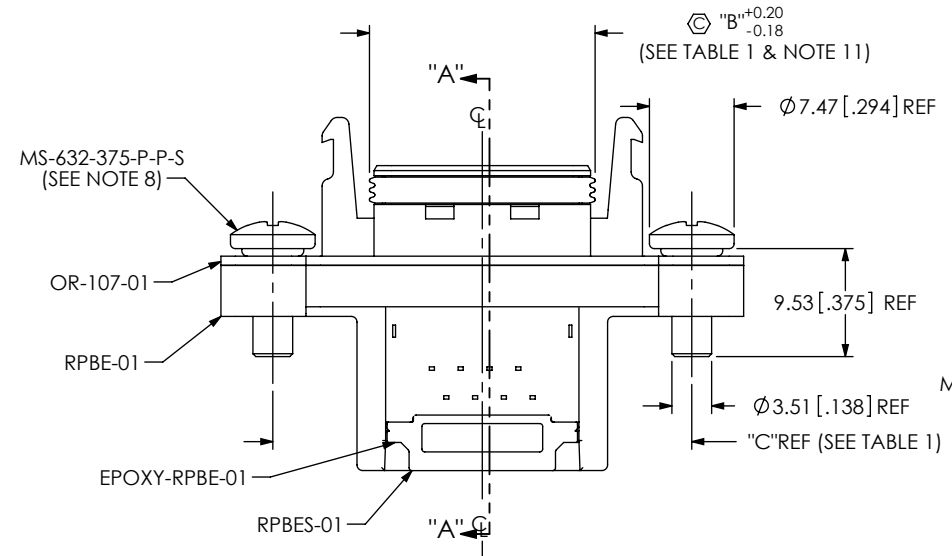
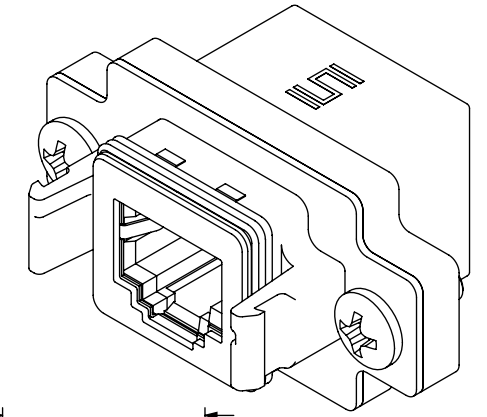
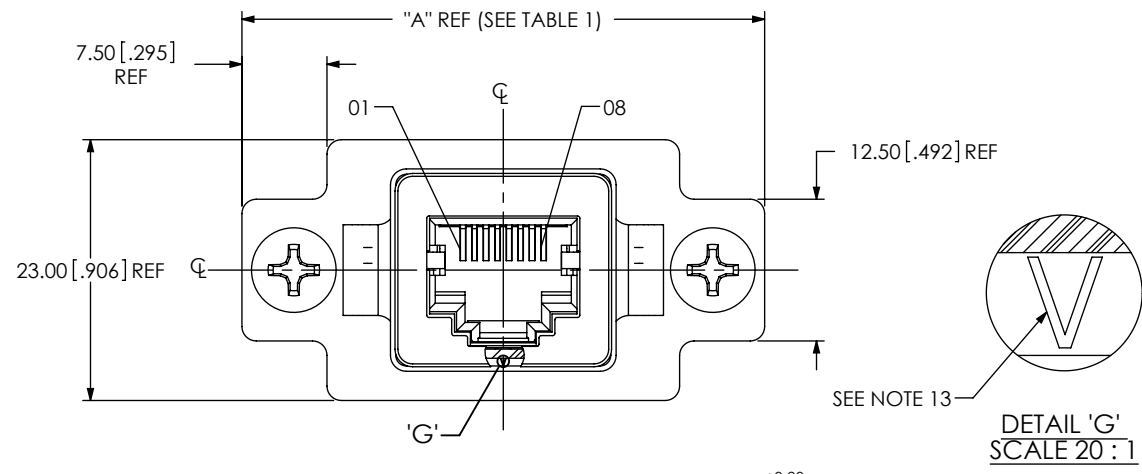


DO NOT SCALE FROM THIS PRINT

DESIGNED & DIMENSIONED IN MILLIMETERS [INCHES]

RPBE-XX-XX-X

No. OF PORTS  
-01, -02  
LEAD STYLE  
-01: RIGHT ANGLE  
PLATING SPECIFICATION  
-E: SELECTIVE, 0.00127 MIN GOLD ON CONTACT, FLASH GOLD ON TAIL



- NOTES:
1. Ⓢ REPRESENTS A CRITICAL DIMENSION.
  2. BURR ALLOWANCE: 0.038 [.015] MAX.
  3. MINIMUM PUSHOUT FORCE: 4.4N [1.00 LB].
  4. MAXIMUM ALLOWABLE BOW: 0.05 [.002] MM/MM AFTER ASSEMBLY.
  5. PANEL THICKNESS: 0.08 [.030] - 3.96 [1.56], RECOMMENDED PANEL CUT OUT ON SHEET 3.
  6. SEE EPOXY-RPBE-XX FOR CURING INSTRUCTIONS.
  7. PARTS TO BE OVEN CURED AT 200°C FOR 10 MINUTES.
  8. SEALING O-RING IS INCLUDED WITH MS-632-375-P-P-S.
  9. ALL PARTS MUST BE PACKAGED IN TUBES.
  10. REQUIRED TORQUE ON MS-632-375-P-P-S FOR RPBE-01-01-E: 0.32Nm±0.07 [45IN-OZ±10] FOR RPBE-02-01-E: 0.16Nm±0.04 [65IN-OZ±5]
  11. MEASURE O-RING IN THE CENTER OF THE PART.
  12. EPOXY TO SEAL/WICK AROUND ALL WALLS/CONTACT TAILS.
  13. OR-108-XX POSITION INDICATOR.

FIG 1 RPBE-01-01-E SHOWN

F:\DWG\MISC\MKTG\RPBE-XX-XX-X-MKT.SLDDRW

NO OF PORTS	"A"	"B"	"C"
-01	46.10 [1.815]	19.90 [0.783]	36.95 [1.455]
-02	67.10 [2.642]	40.90 [1.610]	57.95 [2.281]

UNLESS OTHERWISE SPECIFIED, DIMENSIONS ARE IN MILLIMETERS. TOLERANCES ARE:  
DECIMALS ANGLES  
X.X: ±0.3 [.01] 2°  
X.XX: ±0.13 [.005]  
X.XXX: ±0.051 [.0020]

PROPRIETARY NOTE  
THIS DOCUMENT CONTAINS INFORMATION CONFIDENTIAL AND PROPRIETARY TO SAMTEC, INC. AND SHALL NOT BE REPRODUCED OR TRANSFERRED TO OTHER DOCUMENTS OR DISCLOSED TO OTHERS OR USED FOR ANY PURPOSE OTHER THAN THAT WHICH IT WAS OBTAINED WITHOUT THE EXPRESSED WRITTEN CONSENT OF SAMTEC, INC.

**samtec**  
520 PARK EAST BLVD, NEW ALBANY, IN 47150  
PHONE: 812-944-6733 FAX: 812-948-5047  
e-Mail: info@SAMTEC.com code 53322

MATERIAL: DO NOT SCALE DRAWING  
INSULATOR: LCP, COLOR: BLACK  
CONTACT: PHOS BRONZE  
SEAL: NBR  
SHIELD: COPPER ALLOY  
SCREW: STAINLESS STEEL  
NUT: STAINLESS STEEL  
O-RING: SILICONE  
EPOXY: DIELECTRIC SILICON

SHEET SCALE: 3:2

DESCRIPTION:  
SEAL RECTANGULAR ETHERNET  
DWG. NO.  
RPBE-XX-XX-X  
BY: T NEWTON 11/17/2009 SHEET 1 OF 4

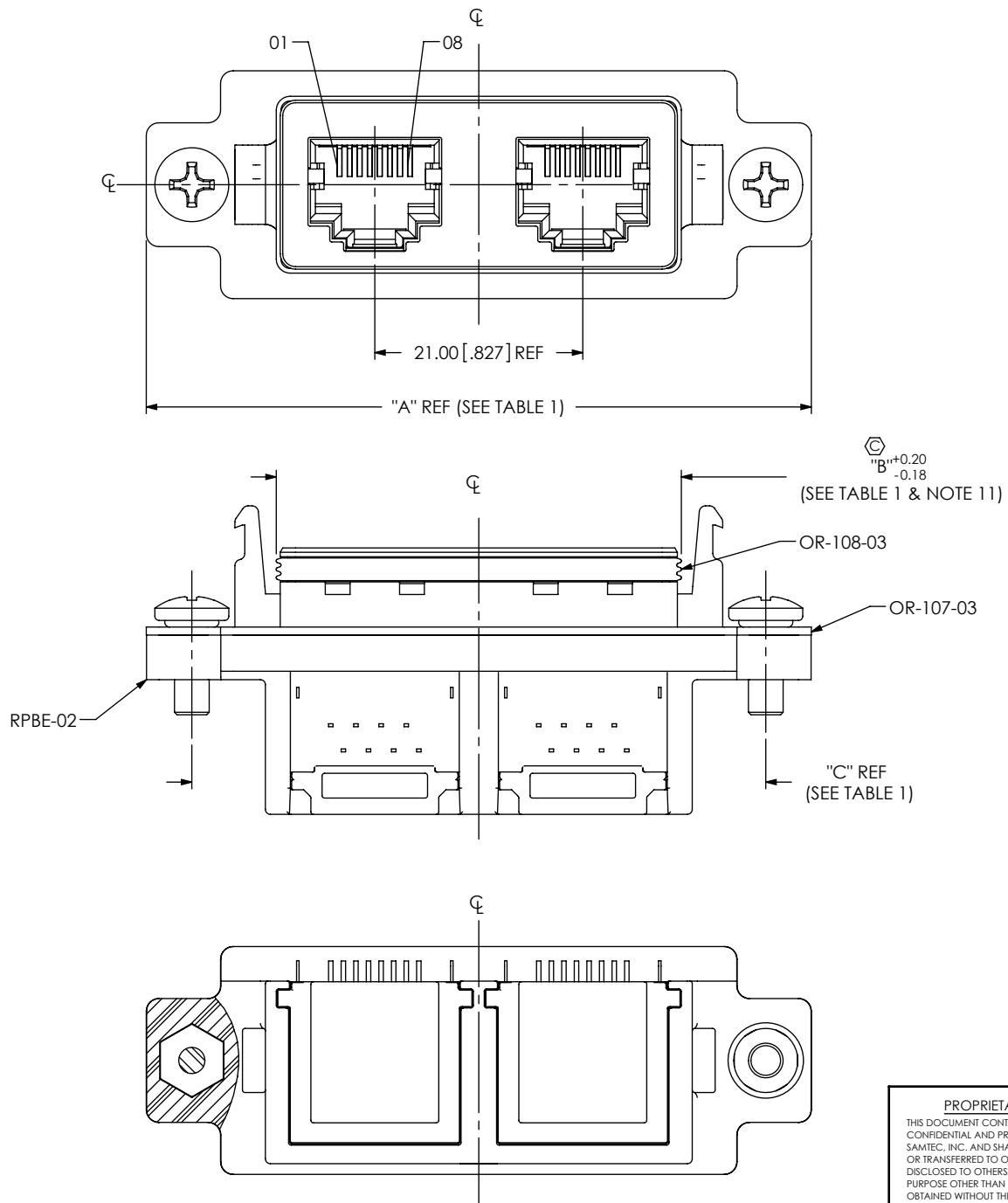


FIG 2  
 RPBE-02-01-E SHOWN  
 (SAME AS FIG 1, EXCEPT AS SHOWN)

**PROPRIETARY NOTE**  
 THIS DOCUMENT CONTAINS INFORMATION  
 CONFIDENTIAL AND PROPRIETARY TO  
 SAMTEC, INC. AND SHALL NOT BE REPRODUCED  
 OR TRANSFERRED TO OTHER DOCUMENTS OR  
 DISCLOSED TO OTHERS OR USED FOR ANY  
 PURPOSE OTHER THAN THAT WHICH IT WAS  
 OBTAINED WITHOUT THE EXPRESSED WRITTEN  
 CONSENT OF SAMTEC, INC.

DO NOT SCALE DRAWING

SHEET SCALE: 1.75:1

**samtec**

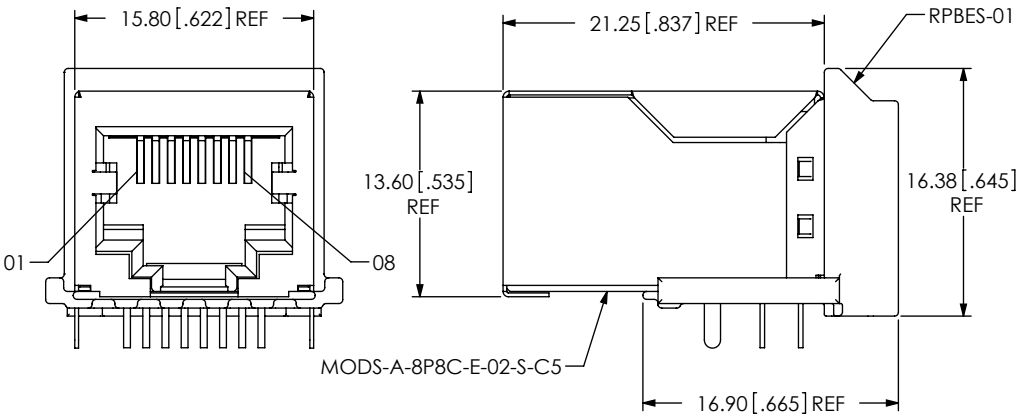
520 PARK EAST BLVD, NEW ALBANY, IN 47150  
 PHONE: 812-944-6733 FAX: 812-948-5047  
 e-Mail: info@SAMTEC.com code 55322

DESCRIPTION: SEAL RECTANGULAR ETHERNET

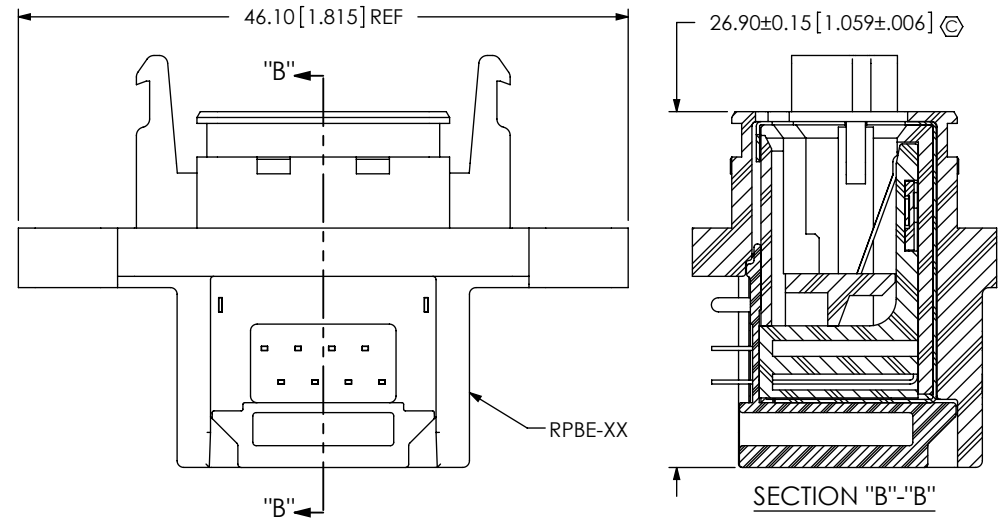
DWG. NO. RPBE-XX-XX-X

BY: T NEWTON 11/17/2009 SHEET 2 OF 4

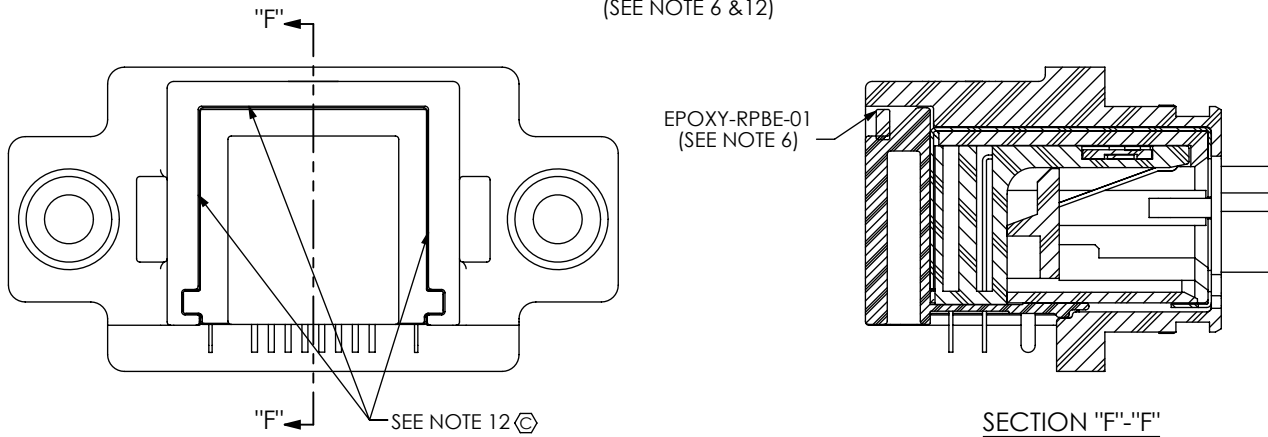
**IN-PROCESS 1**  
FILL RPBE-01



**IN-PROCESS 2**  
ADD RPBE-XX



**IN-PROCESS 3**  
ADD & CURE EPOXY-RPBE-01  
(SEE NOTE 6 & 12)



**RECOMMENDED PANEL CUT OUT**  
(SEE NOTE 5)

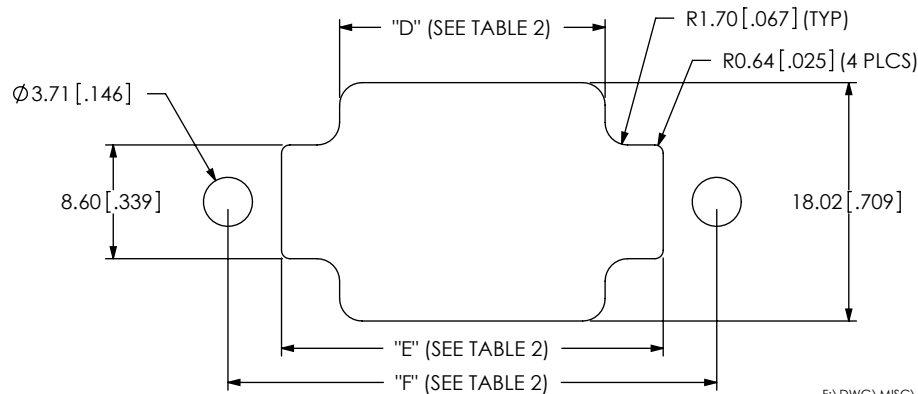


TABLE 2

NO OF PORTS	"D"	"E"	"F"
-01	20.07 [0.790]	28.85 [1.136]	36.95 [1.455]
-02	41.07 [1.617]	49.85 [1.963]	57.95 [2.281]

PROPRIETARY NOTE

THIS DOCUMENT CONTAINS INFORMATION CONFIDENTIAL AND PROPRIETARY TO SAMTEC, INC. AND SHALL NOT BE REPRODUCED OR TRANSFERRED TO OTHER DOCUMENTS OR DISCLOSED TO OTHERS OR USED FOR ANY PURPOSE OTHER THAN THAT WHICH IT WAS OBTAINED WITHOUT THE EXPRESSED WRITTEN CONSENT OF SAMTEC, INC.

DO NOT SCALE DRAWING

SHEET SCALE: 1:75:1



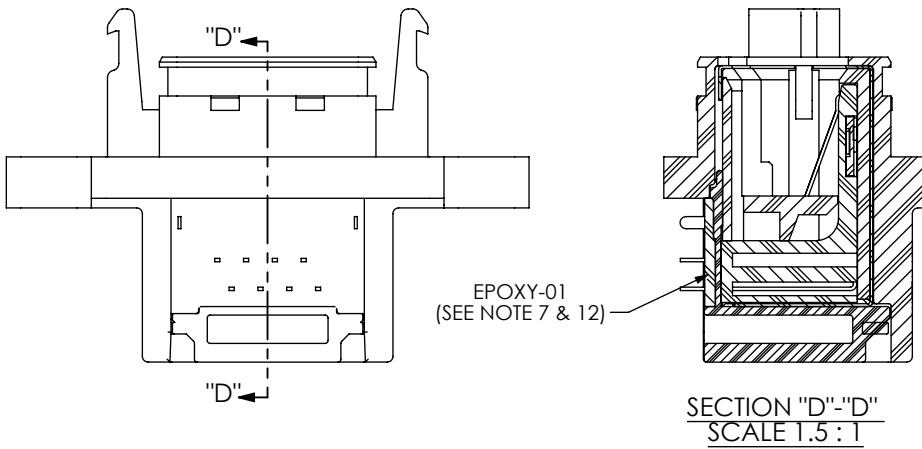
520 PARK EAST BLVD, NEW ALBANY, IN 47150  
PHONE: 812-944-6733 FAX: 812-948-5047  
e-Mail: info@SAMTEC.com code 55322

DESCRIPTION: SEAL RECTANGULAR ETHERNET

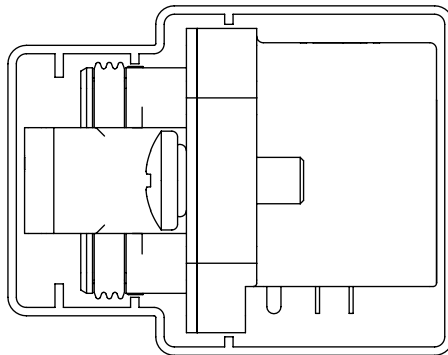
DWG. NO. RPBE-XX-XX-X

BY: T NEWTON 11/17/2009 SHEET 3 OF 4

IN-PROCESS 4  
 FILL EPOXY-01  
 (SEE NOTE 7 & 12)

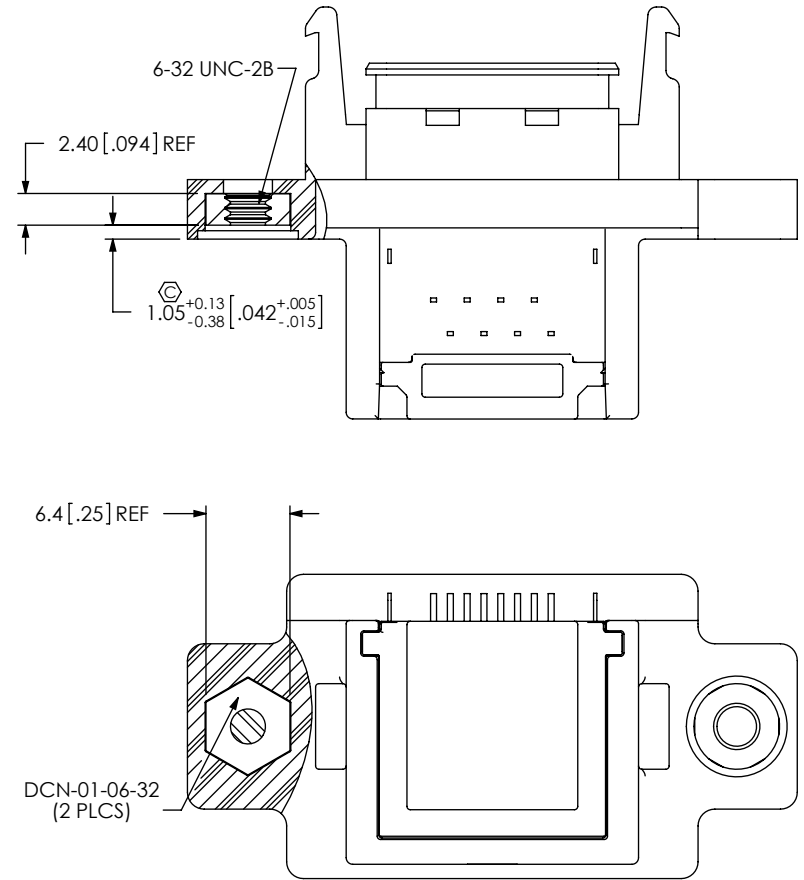


PACKAGING VIEW  
 (SEE NOTE 9)



TUBE: PT-RPBE001  
 PLUG: TP-50

IN-PROCESS 5  
 FILL DCN-01-06-32 & HEAT STAKE



PROPRIETARY NOTE  
 THIS DOCUMENT CONTAINS INFORMATION  
 CONFIDENTIAL AND PROPRIETARY TO  
 SAMTEC, INC. AND SHALL NOT BE REPRODUCED  
 OR TRANSFERRED TO OTHER DOCUMENTS OR  
 DISCLOSED TO OTHERS OR USED FOR ANY  
 PURPOSE OTHER THAN THAT WHICH IT WAS  
 OBTAINED WITHOUT THE EXPRESSED WRITTEN  
 CONSENT OF SAMTEC, INC.

DO NOT SCALE DRAWING  
 SHEET SCALE: 1.75:1

**samtec**

520 PARK EAST BLVD, NEW ALBANY, IN 47150  
 PHONE: 812-944-6733 FAX: 812-948-5047  
 e-Mail: info@SAMTEC.com code 55322

DESCRIPTION:  
 SEAL RECTANGULAR ETHERNET

DWG. NO.  
 RPBE-XX-XX-X

BY: T NEWTON 11/17/2009 SHEET 4 OF 4