



Chipsmall Limited consists of a professional team with an average of over 10 year of expertise in the distribution of electronic components. Based in Hongkong, we have already established firm and mutual-benefit business relationships with customers from,Europe,America and south Asia,supplying obsolete and hard-to-find components to meet their specific needs.

With the principle of “Quality Parts,Customers Priority,Honest Operation,and Considerate Service”,our business mainly focus on the distribution of electronic components. Line cards we deal with include Microchip,ALPS,ROHM,Xilinx,Pulse,ON,Everlight and Freescale. Main products comprise IC,Modules,Potentiometer,IC Socket,Relay,Connector.Our parts cover such applications as commercial,industrial, and automotives areas.

We are looking forward to setting up business relationship with you and hope to provide you with the best service and solution. Let us make a better world for our industry!



Contact us

Tel: +86-755-8981 8866 Fax: +86-755-8427 6832

Email & Skype: info@chipsmall.com Web: www.chipsmall.com

Address: A1208, Overseas Decoration Building, #122 Zhenhua RD., Futian, Shenzhen, China



DO NOT SCALE FROM THIS PRINT

DESIGNED & DIMENSIONED IN MILLIMETERS [INCHES]

RPBU-XX-X-A-XX-XX

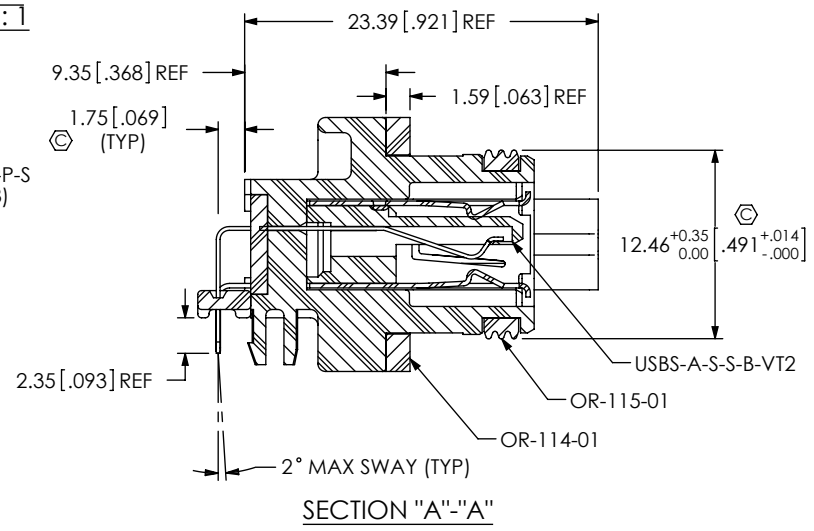
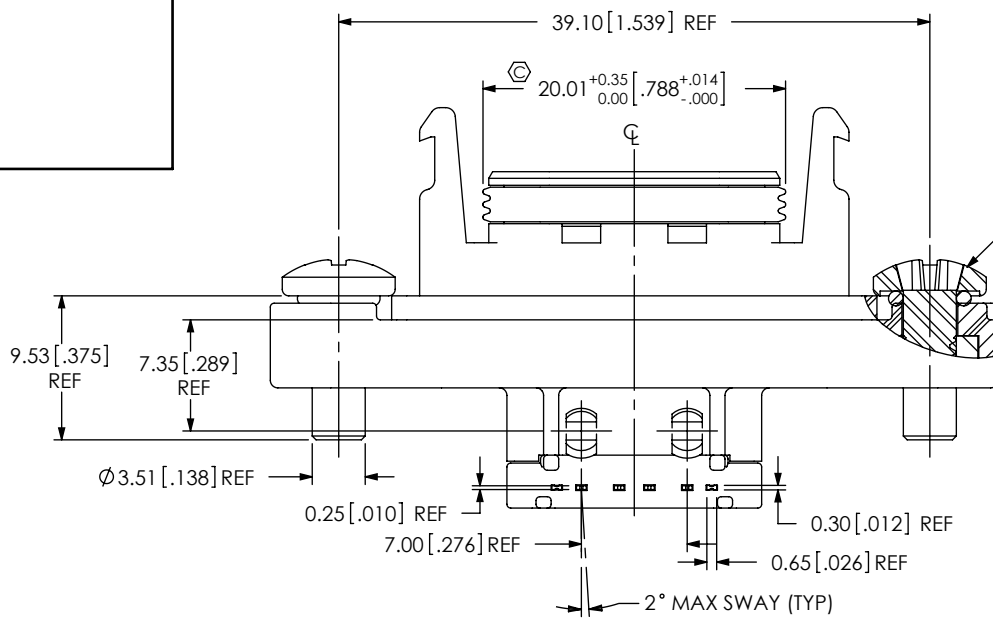
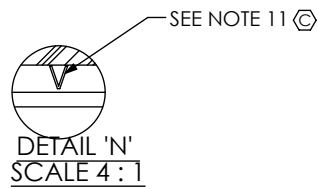
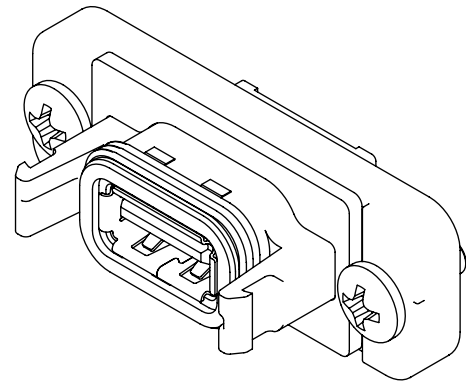
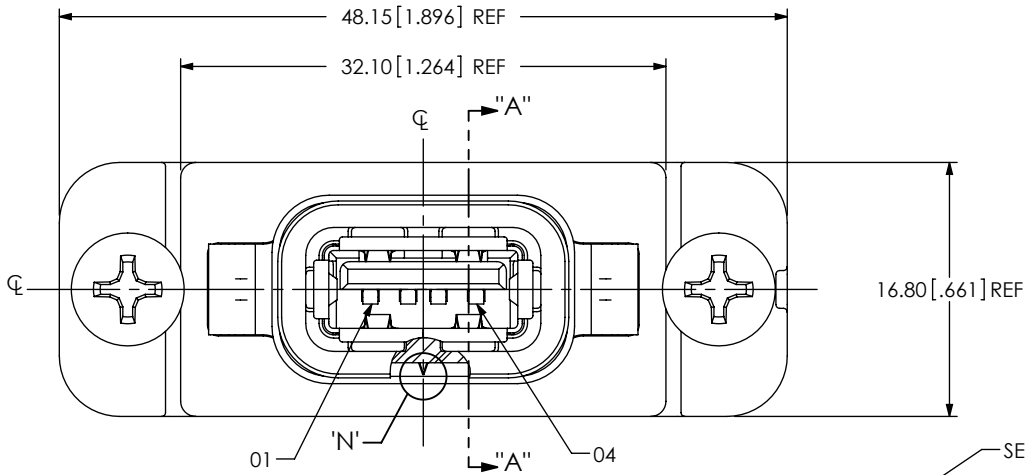
No OF POSITIONS
-01
-02

PLATING SPECIFICATION
-S: SELECTIVE, .000030 GOLD ON POST, TIN ON TAIL

TYPE
-A

OPTION
-LC: LOCKING CLIP (AVAILABLE ON -VT ONLY)

TERMINATION
-RA: RIGHT ANGLE (SHEET 1, FIG 1)
-VT: VERTICAL THROUGH HOLE (SHEET 2, FIG 2)



NOTES:
FIG 1
RPBU-01-X-A-RA SHOWN

1. Ⓢ REPRESENTS A CRITICAL DIMENSION.
2. BURR ALLOWANCE: 0.038[.0015] MAX.
3. MINIMUM PUSHOUT FORCE: 4.4N[1.00 LB].
4. MAXIMUM ALLOWABLE BOW: 0.05[.002] MM/MM AFTER ASSEMBLY.
5. PANEL THICKNESS: 0.76[.030] - 3.96[.156], RECOMMENDED PANEL CUT OUT ON SHEET 2.
6. REQUIRED TORQUE ON MS-632-375-P-P-S: .35±.07 Nm [50±10 IN-OZ].
7. ALL PARTS MUST BE PACKAGED IN TUBES.
8. SEAL O-RING IS INCLUDED IN THE MS-632-375-P-P-S.
9. EPOXY MUST BE FLUSH OR BELOW EDGE OF CAVITY. NO VOIDS IN EPOXY ALLOWED.
10. PARTS TO BE OVEN CURED, AFTER THE EPOXY IS FILLED, AT 200°C FOR 10 MINUTES.
11. OR-115-XX POSITION INDICATOR.

UNLESS OTHERWISE SPECIFIED, DIMENSIONS ARE IN MILLIMETERS. TOLERANCES ARE:
DECIMALS ANGLES
X.X: ±0.3 [.01] 2°
X.XX: ±0.13 [.005]
X.XXX: ±0.051 [.0020]

PROPRIETARY NOTE
THIS DOCUMENT CONTAINS INFORMATION CONFIDENTIAL AND PROPRIETARY TO SAMTEC, INC. AND SHALL NOT BE REPRODUCED OR TRANSFERRED TO OTHER DOCUMENTS OR DISCLOSED TO OTHERS OR USED FOR ANY PURPOSE OTHER THAN THAT WHICH IT WAS OBTAINED WITHOUT THE EXPRESSED WRITTEN CONSENT OF SAMTEC, INC.



520 PARK EAST BLVD., NEW ALBANY, IN 47150
PHONE: 812-944-6733 FAX: 812-948-5047
e-Mail info@SAMTEC.com code 53322

MATERIAL: DO NOT SCALE DRAWING SHEET SCALE: 2:1
INSULATOR: LCP UL94V0, COLOR: BLACK
CONTACT: PHOS BRONZE
SHIELD: PHOS BRONZE
SEAL: SILICON
SCREW: STAINLESS STEEL
NUT: STAINLESS STEEL

DESCRIPTION:
RECTANGULAR PANEL BOARD MOUNT USB- A

DWG. NO. RPBU-XX-X-A-XX-XX

BY: T NEWTON 02/12/2010 SHEET 1 OF 10

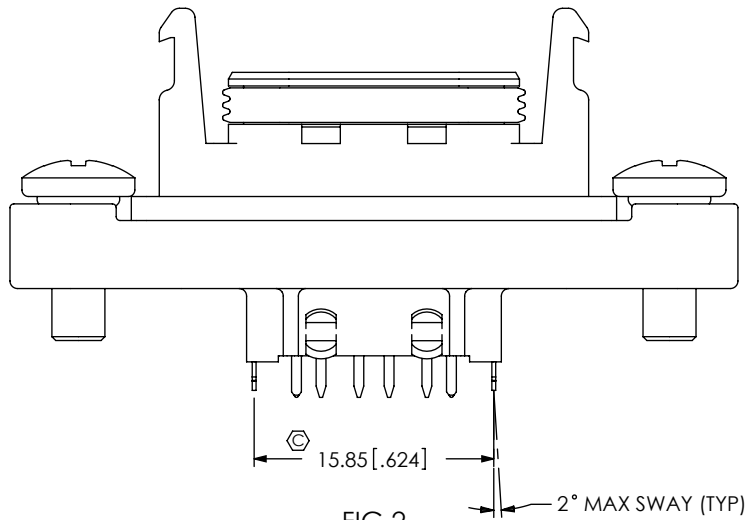
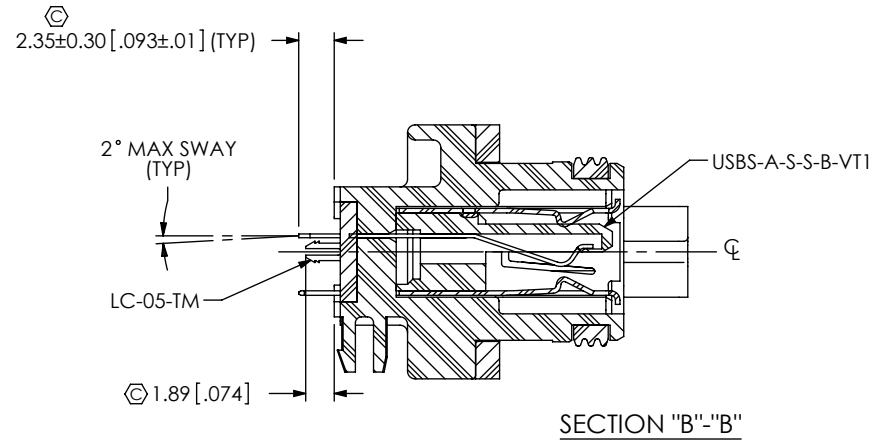
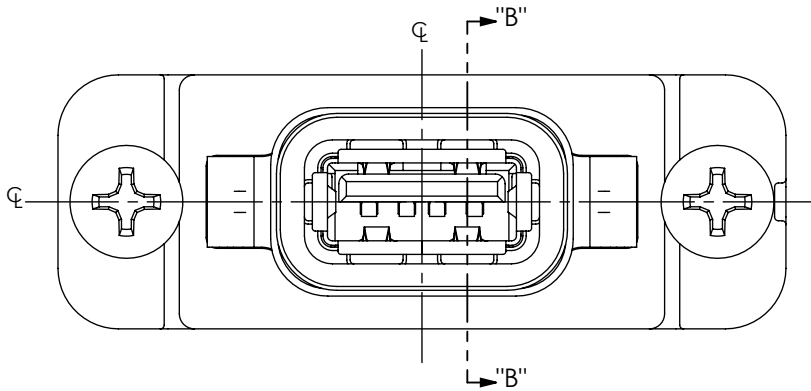


FIG 2
RPBU-01-X-A-VT-LC SHOWN
(SAME AS FIG 1, EXCEPT AS SHOWN)

RECOMMENDED PANEL CUT OUT
(SEE NOTE 5)

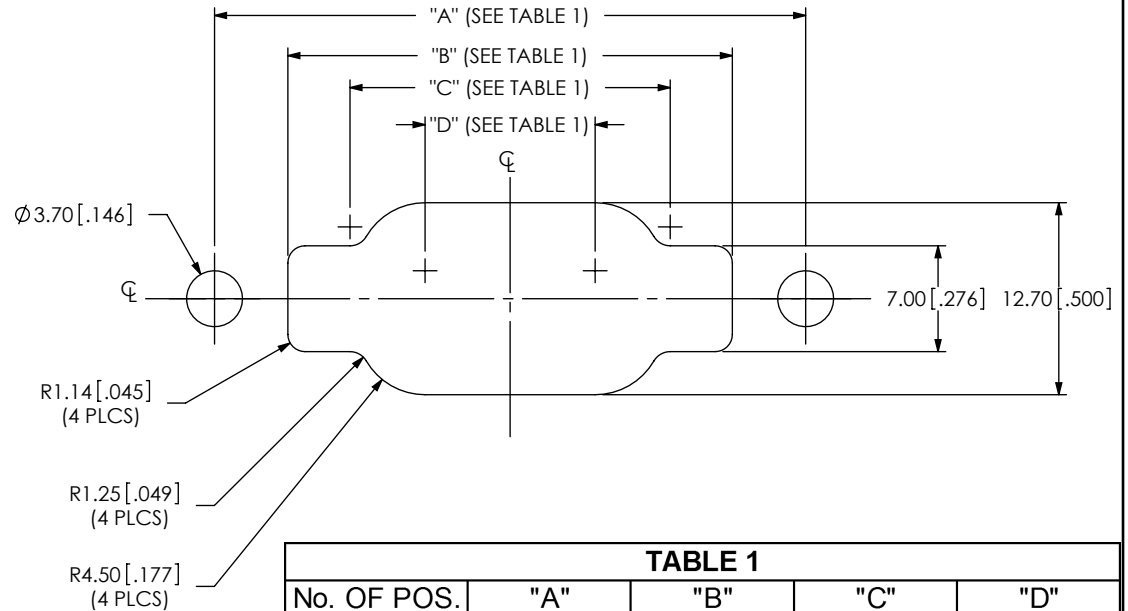


TABLE 1				
No. OF POS.	"A"	"B"	"C"	"D"
-01	39.10[1.54]	29.40[1.16]	21.18[0.83]	11.25[0.44]
-02	60.75[2.39]	51.05[2.01]	42.83[1.69]	32.90[1.30]

PROPRIETARY NOTE
THIS DOCUMENT CONTAINS INFORMATION
CONFIDENTIAL AND PROPRIETARY TO
SAMTEC, INC. AND SHALL NOT BE REPRODUCED
OR TRANSFERRED TO OTHER DOCUMENTS OR
DISCLOSED TO OTHERS OR USED FOR ANY
PURPOSE OTHER THAN THAT WHICH IT WAS
OBTAINED WITHOUT THE EXPRESSED WRITTEN
CONSENT OF SAMTEC, INC.

DO NOT SCALE DRAWING

SHEET SCALE: 2:1



520 PARK EAST BLVD, NEW ALBANY, IN 47150
PHONE: 812-944-6733 FAX: 812-948-5047
e-Mail info@SAMTEC.com code 55322

DESCRIPTION:
RECTANGULAR PANEL BOARD MOUNT USB- A

DWG. NO.
RPBU-XX-X-A-XX-XX

BY: T NEWTON 02/12/2010 SHEET 2 OF 10

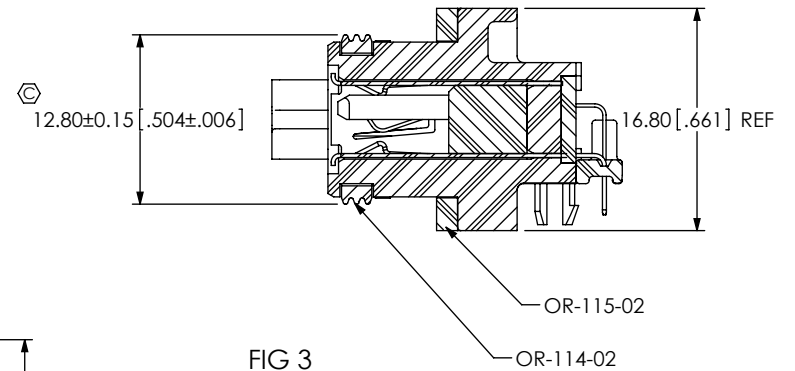
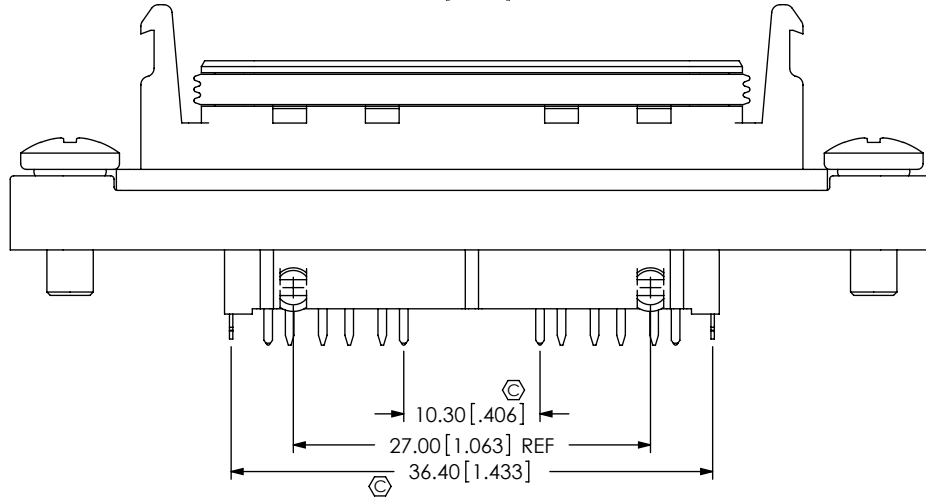
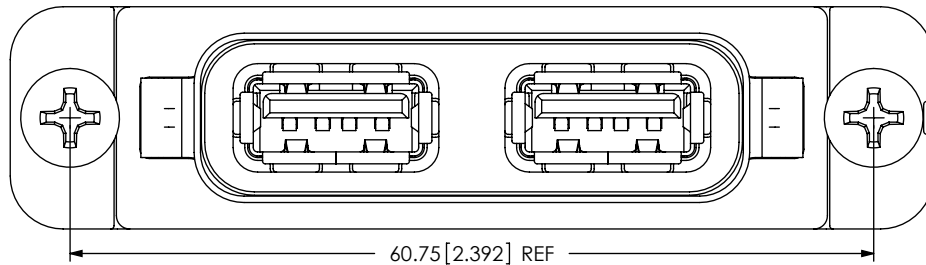
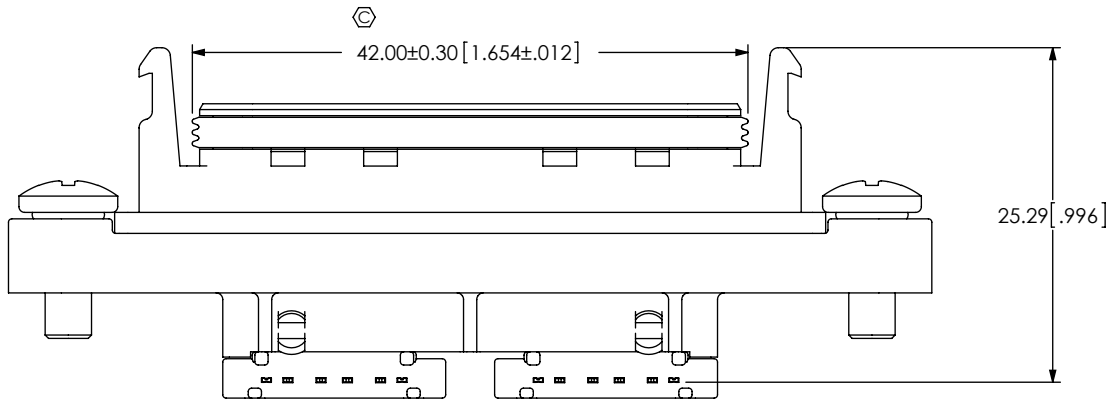
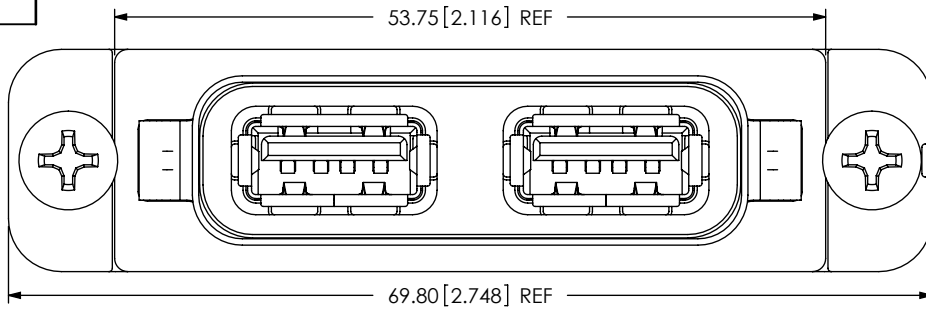


FIG 3
RPBU-02-X-A-RA SHOWN
(SAME AS FIG 1, EXCEPT AS SHOWN)

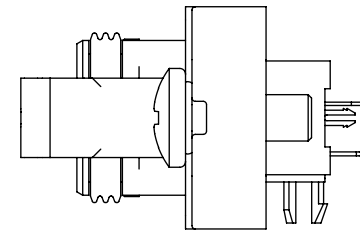


FIG 4
RPBU-02-X-A-VT-LC SHOWN
(SAME AS FIG 2, EXCEPT AS SHOWN)

PROPRIETARY NOTE
THIS DOCUMENT CONTAINS INFORMATION
CONFIDENTIAL AND PROPRIETARY TO
SAMTEC, INC. AND SHALL NOT BE REPRODUCED
OR TRANSFERRED TO OTHER DOCUMENTS OR
DISCLOSED TO OTHERS OR USED FOR ANY
PURPOSE OTHER THAN THAT WHICH IT WAS
OBTAINED WITHOUT THE EXPRESSED WRITTEN
CONSENT OF SAMTEC, INC.

DO NOT SCALE DRAWING

SHEET SCALE: 7:4

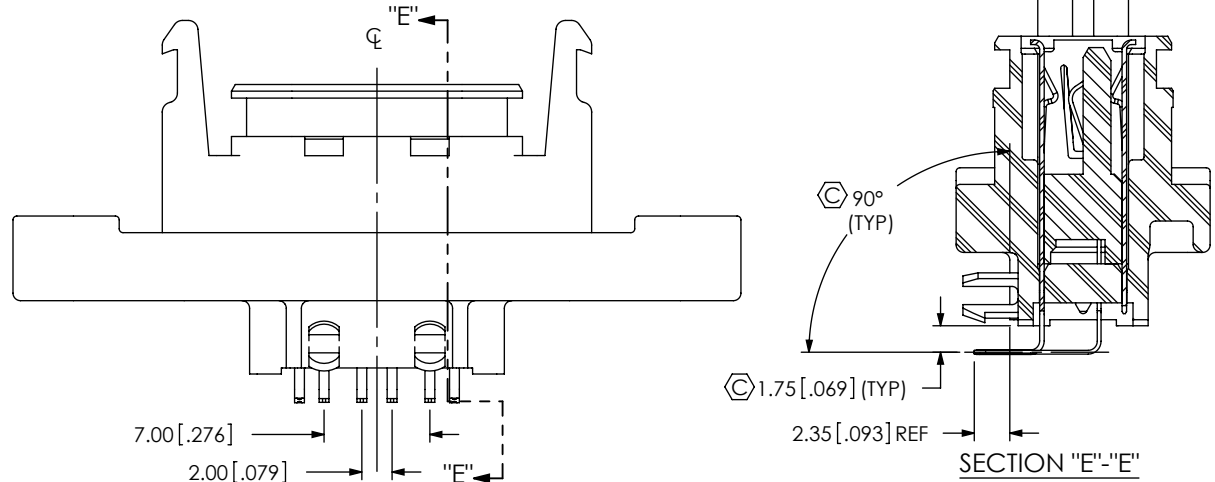
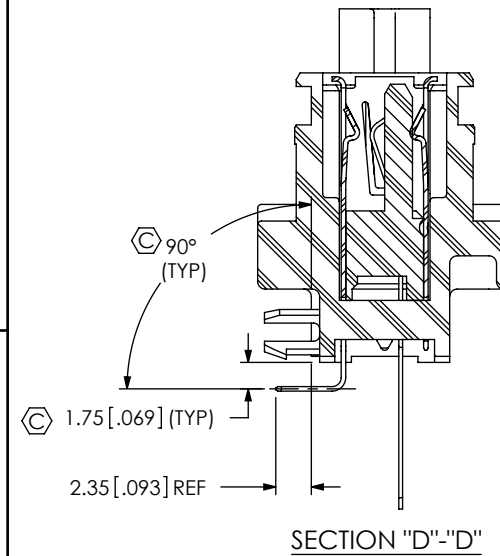
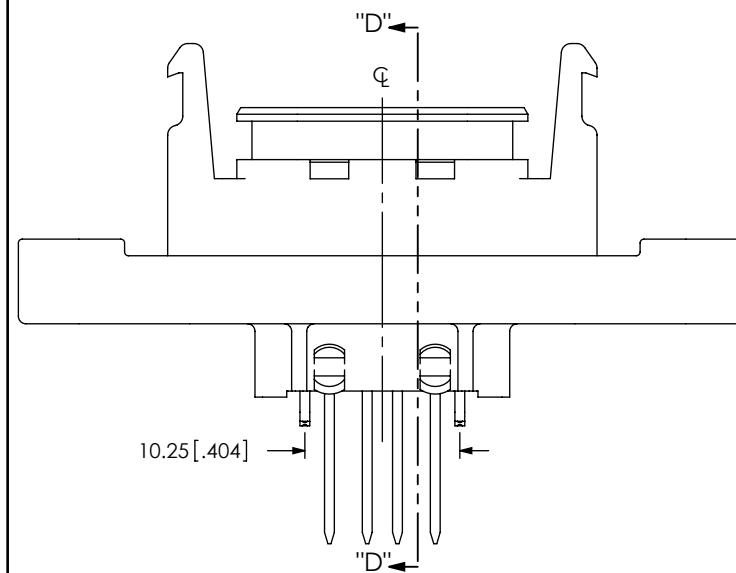
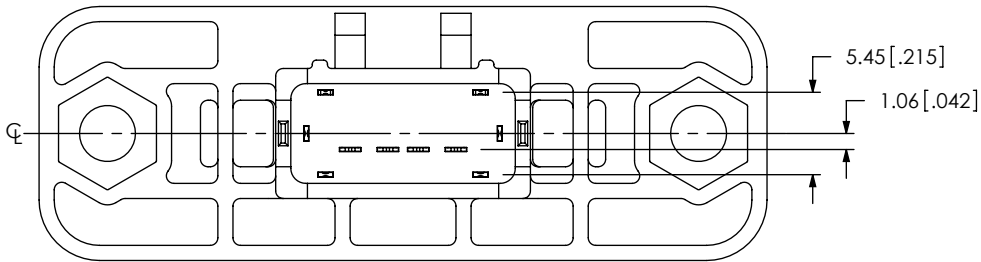
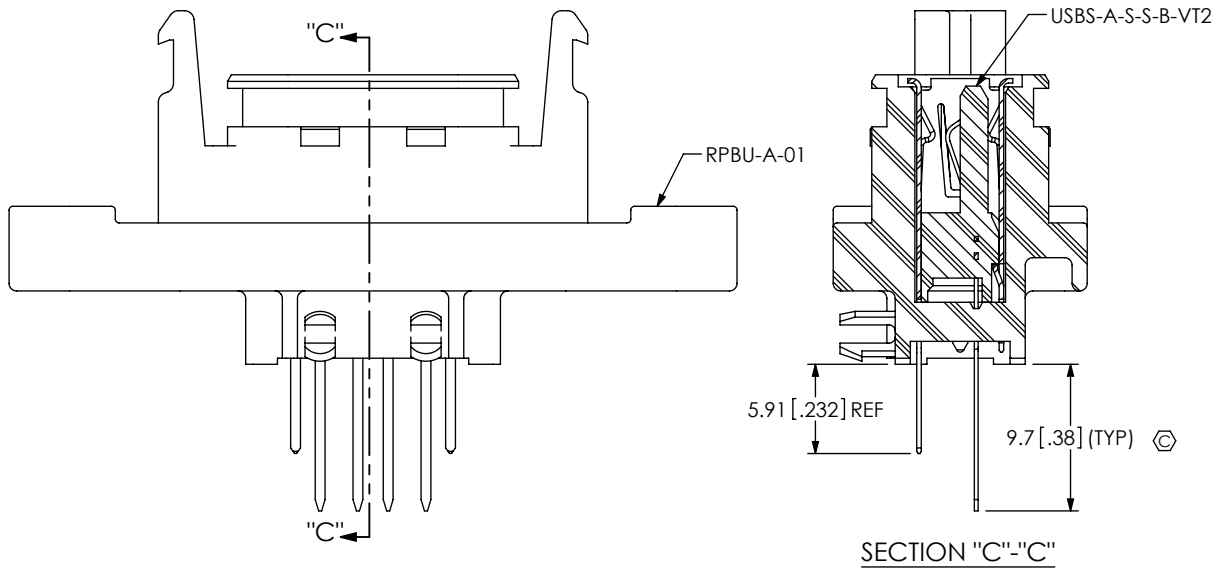
samtec

520 PARK EAST BLVD, NEW ALBANY, IN 47150
PHONE: 812-944-6733 FAX: 812-948-5047
e-Mail info@SAMTEC.com code 55322

DESCRIPTION:
RECTANGULAR PANEL BOARD MOUNT USB- A

DWG. NO.
RPBU-XX-X-A-XX-XX

BY: T NEWTON 02/12/2010 SHEET 3 OF 10



PROPRIETARY NOTE
THIS DOCUMENT CONTAINS INFORMATION
CONFIDENTIAL AND PROPRIETARY TO
SAMTEC, INC. AND SHALL NOT BE REPRODUCED
OR TRANSFERRED TO OTHER DOCUMENTS OR
DISCLOSED TO OTHERS OR USED FOR ANY
PURPOSE OTHER THAN THAT WHICH IT WAS
OBTAINED WITHOUT THE EXPRESSED WRITTEN
CONSENT OF SAMTEC, INC.

DO NOT SCALE DRAWING

SHEET SCALE: 2:1



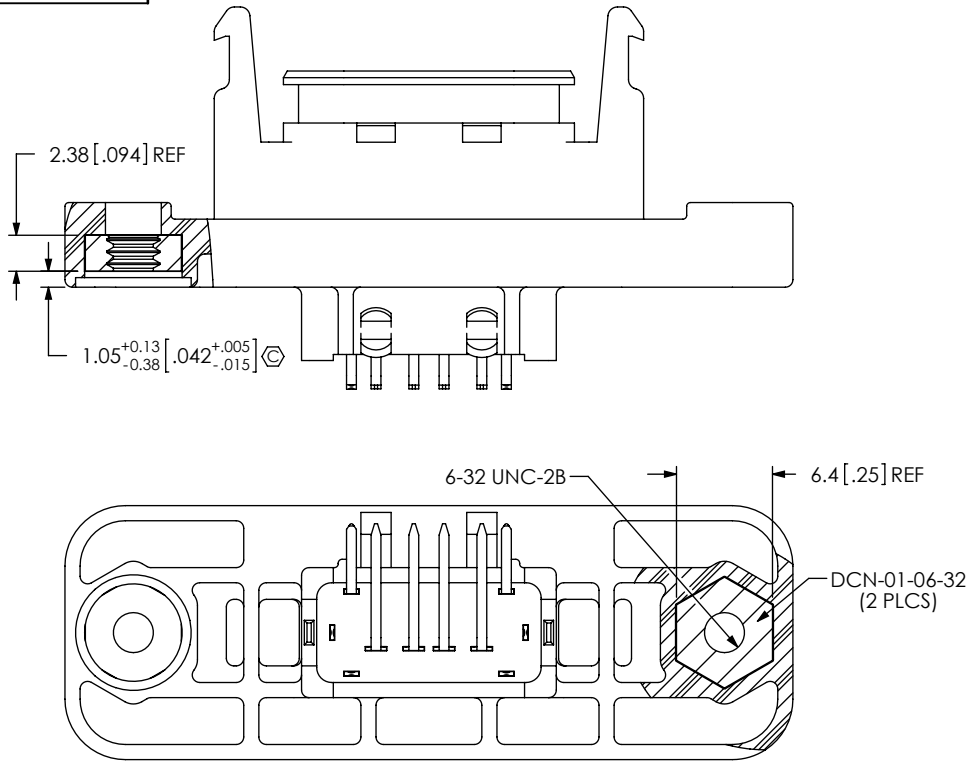
520 PARK EAST BLVD, NEW ALBANY, IN 47150
PHONE: 812-944-6733 FAX: 812-948-5047
e-Mail: info@SAMTEC.com code 55322

DESCRIPTION:
RECTANGULAR PANEL BOARD MOUNT USB- A

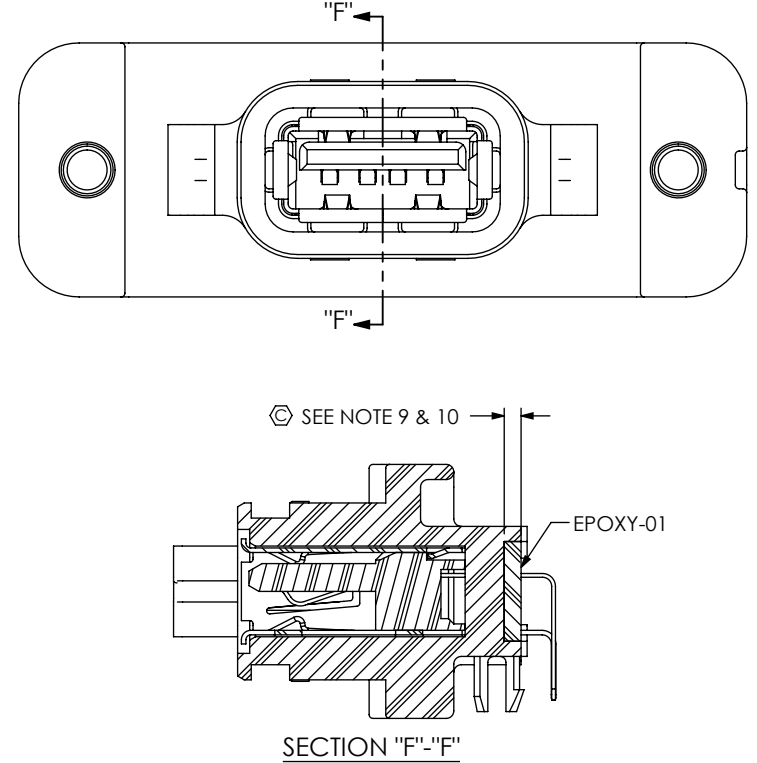
DWG. NO.
RPBU-XX-X-A-XX-XX

BY: T NEWTON 02/12/2010 SHEET 4 OF 10

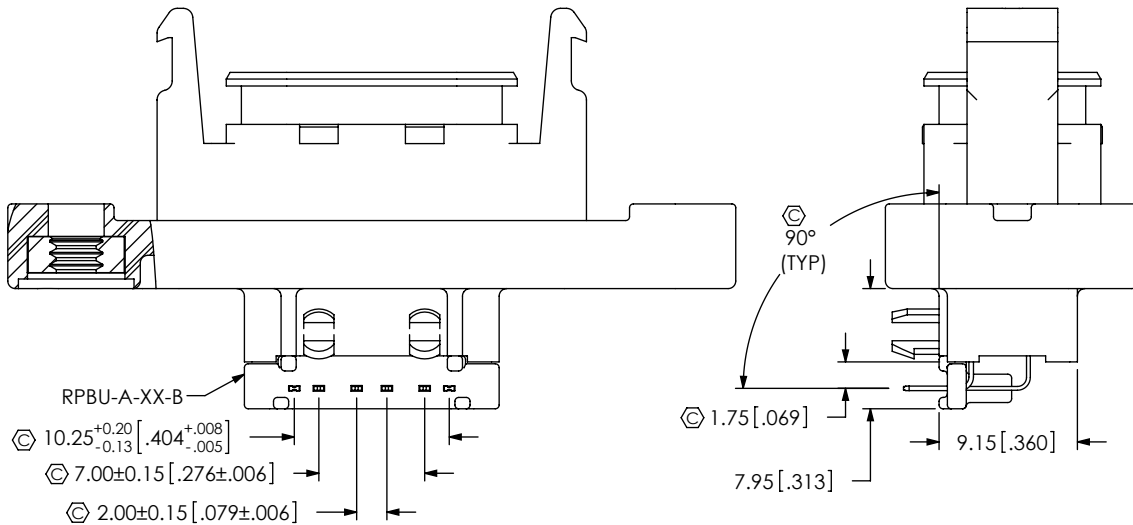
-01 RA: IN-PROCESS 4
FILL DCN-01-06-32 & HEAT STAKE



-01 RA: IN-PROCESS 5
FILL EPOXY-01



-01 RA: IN-PROCESS 6
FILL RPBU-A-XX-B



PROPRIETARY NOTE
THIS DOCUMENT CONTAINS INFORMATION CONFIDENTIAL AND PROPRIETARY TO SAMTEC, INC. AND SHALL NOT BE REPRODUCED OR TRANSFERRED TO OTHER DOCUMENTS OR DISCLOSED TO OTHERS OR USED FOR ANY PURPOSE OTHER THAN THAT WHICH IT WAS OBTAINED WITHOUT THE EXPRESSED WRITTEN CONSENT OF SAMTEC, INC.

DO NOT SCALE DRAWING

SHEET SCALE: 2:1



520 PARK EAST BLVD, NEW ALBANY, IN 47150
PHONE: 812-944-6733 FAX: 812-948-5047
e-Mail info@SAMTEC.com code 55322

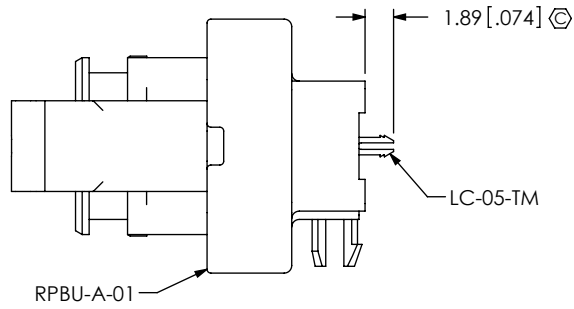
DESCRIPTION:
RECTANGULAR PANEL BOARD MOUNT USB- A

DWG. NO.
RPBU-XX-X-A-XX-XX

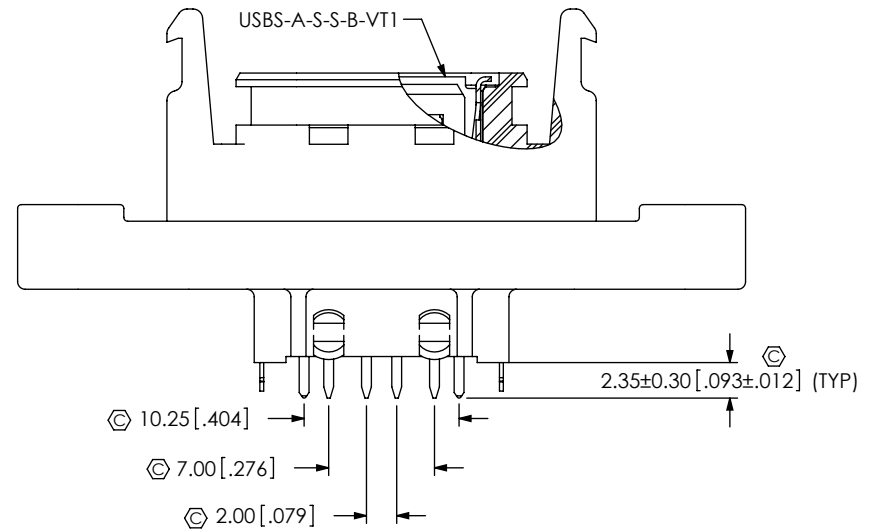
BY: T NEWTON 02/12/2010 SHEET 5 OF 10

REVISION F

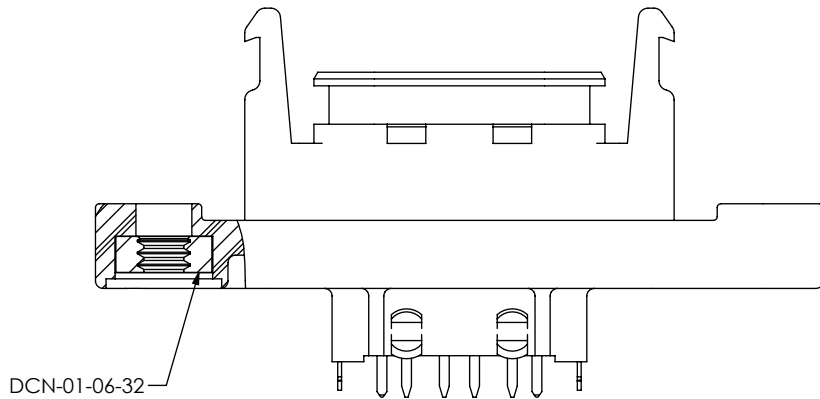
-01 VT: IN-PROCESS 1
FILL LC-05-TM



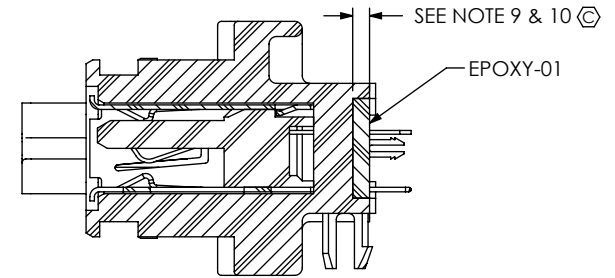
-01 VT: IN-PROCESS 2
FILL USBS-A-S-S-B-VT1
(SAME AS -01RA: IN-PROCESS 1, EXCEPT AS SHOWN)



-01 VT: IN-PROCESS 3
FILL DCN-01-06-32 & HEAT STAKE
(SAME AS -01 RA: IN-PROCESS 4, EXCEPT AS SHOWN)



-01 VT: IN-PROCESS 4
FILL EPOXY-01
(SAME AS -01 RA: IN-PROCESS 5, EXCEPT AS SHOWN)



F:\DWG\MISC\MKTG\RPBU-XX-X-A-XX-XX-MKT.SLDDRW

PROPRIETARY NOTE

THIS DOCUMENT CONTAINS INFORMATION CONFIDENTIAL AND PROPRIETARY TO SAMTEC, INC. AND SHALL NOT BE REPRODUCED OR TRANSFERRED TO OTHER DOCUMENTS OR DISCLOSED TO OTHERS OR USED FOR ANY PURPOSE OTHER THAN THAT WHICH IT WAS OBTAINED WITHOUT THE EXPRESSED WRITTEN CONSENT OF SAMTEC, INC.

DO NOT SCALE DRAWING

SHEET SCALE: 2:1

samtec

520 PARK EAST BLVD, NEW ALBANY, IN 47150
PHONE: 812-944-6733 FAX: 812-948-5047
e-Mail: info@SAMTEC.com code 55322

DESCRIPTION:
RECTANGULAR PANEL BOARD MOUNT USB- A

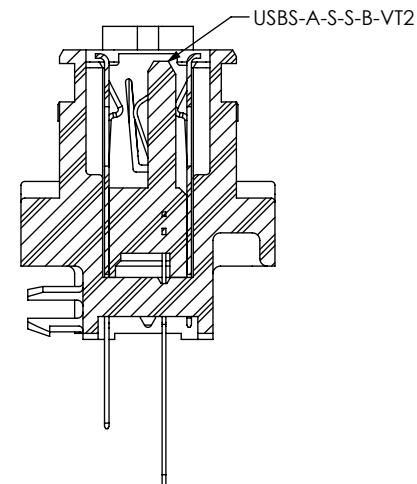
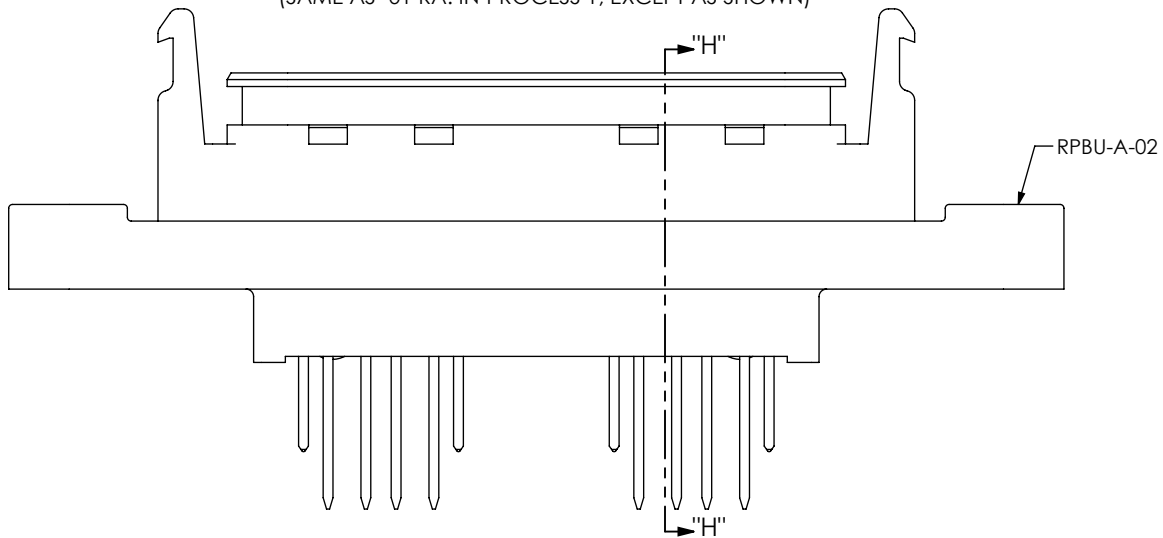
DWG. NO.
RPBU-XX-X-A-XX-XX

BY: T NEWTON 02/12/2010 SHEET 6 OF 10

REVISION F

-02 RA: IN-PROCESS 1

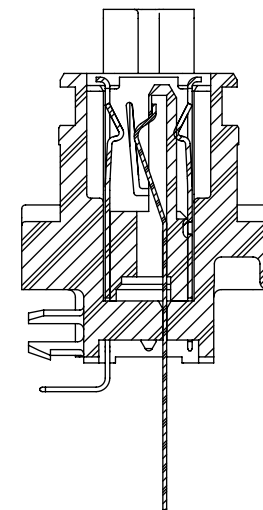
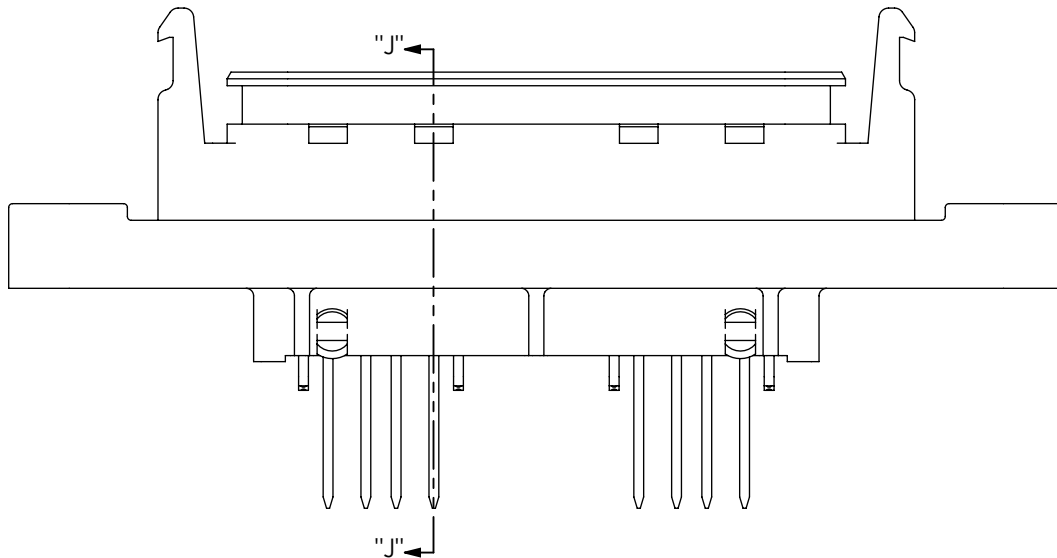
FILL USBS-A-S-S-B-VT2
(SAME AS -01 RA: IN-PROCESS 1, EXCEPT AS SHOWN)



SECTION "H"- "H"

-02 RA: IN-PROCESS 2

FORM SHIELD TAILS ON USBS-A-S-S-B-VT2
(SAME AS -01 RA: IN-PROCESS 2, EXCEPT AS SHOWN)



SECTION "J"- "J"

PROPRIETARY NOTE

THIS DOCUMENT CONTAINS INFORMATION CONFIDENTIAL AND PROPRIETARY TO SAMTEC, INC. AND SHALL NOT BE REPRODUCED OR TRANSFERRED TO OTHER DOCUMENTS OR DISCLOSED TO OTHERS OR USED FOR ANY PURPOSE OTHER THAN THAT WHICH IT WAS OBTAINED WITHOUT THE EXPRESSED WRITTEN CONSENT OF SAMTEC, INC.

DO NOT SCALE DRAWING

SHEET SCALE: 2:1

samtec

520 PARK EAST BLVD, NEW ALBANY, IN 47150
PHONE: 812-944-6733 FAX: 812-948-5047
e-Mail info@SAMTEC.com code 55322

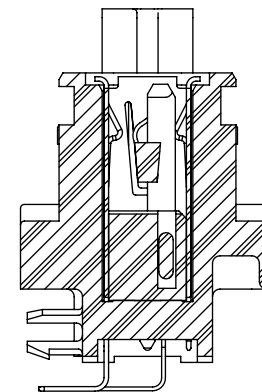
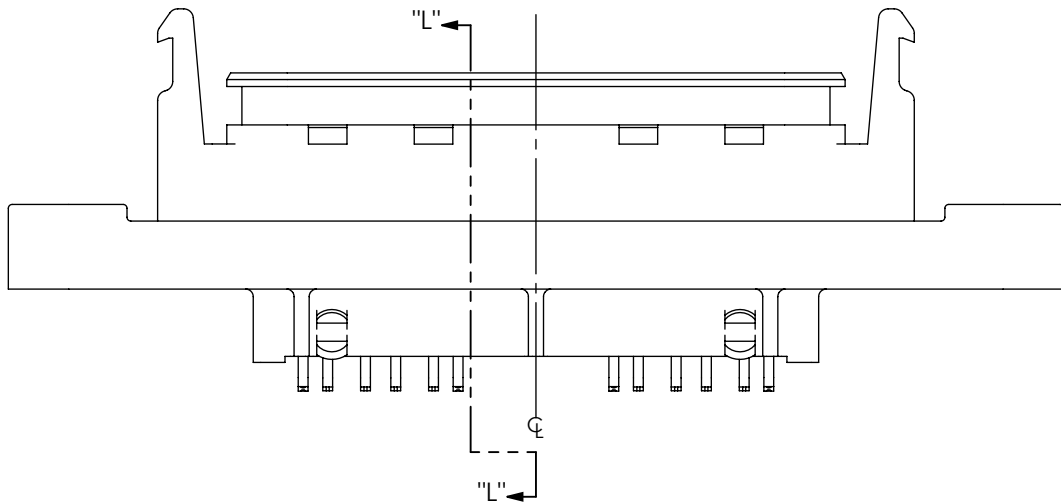
DESCRIPTION:
RECTANGULAR PANEL BOARD MOUNT USB- A

DWG. NO.
RPBU-XX-X-A-XX-XX

BY: T NEWTON 02/12/2010 SHEET 7 OF 10

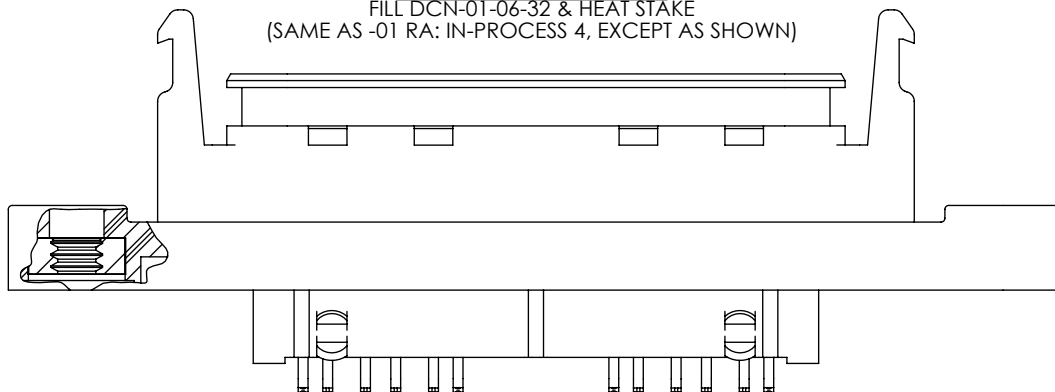
REVISION F

-02 RA: IN-PROCESS 3
FORM CONTACT TAILS ON USBS-A-S-S-B-VT2
(SAME AS -01 RA: IN-PROCESS 3, EXCEPT AS SHOWN)

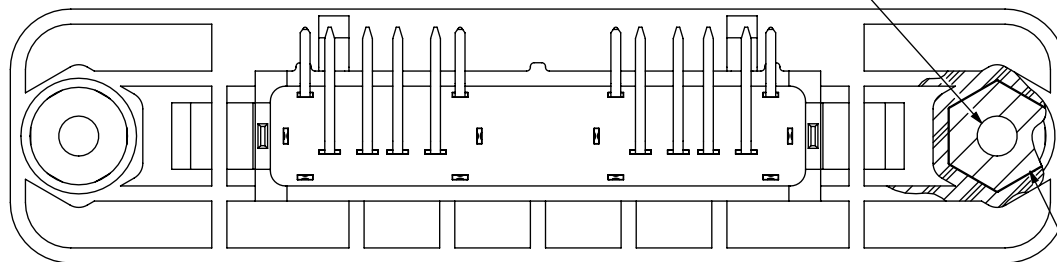


SECTION "L"-"L"

-02 RA: IN-PROCESS 4
FILL DCN-01-06-32 & HEAT STAKE
(SAME AS -01 RA: IN-PROCESS 4, EXCEPT AS SHOWN)



6-32 UNC-2B



DCN-01-06-32
(2 PLCS)

PROPRIETARY NOTE
THIS DOCUMENT CONTAINS INFORMATION
CONFIDENTIAL AND PROPRIETARY TO
SAMTEC, INC. AND SHALL NOT BE REPRODUCED
OR TRANSFERRED TO OTHER DOCUMENTS OR
DISCLOSED TO OTHERS OR USED FOR ANY
PURPOSE OTHER THAN THAT WHICH IT WAS
OBTAINED WITHOUT THE EXPRESSED WRITTEN
CONSENT OF SAMTEC, INC.

DO NOT SCALE DRAWING

SHEET SCALE: 2:1

samtec

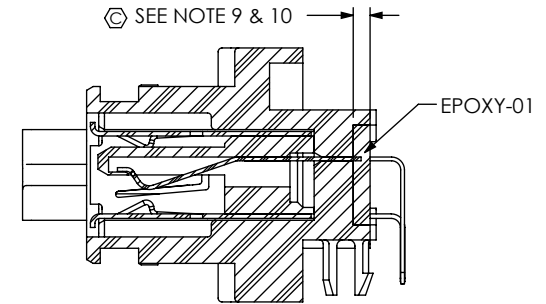
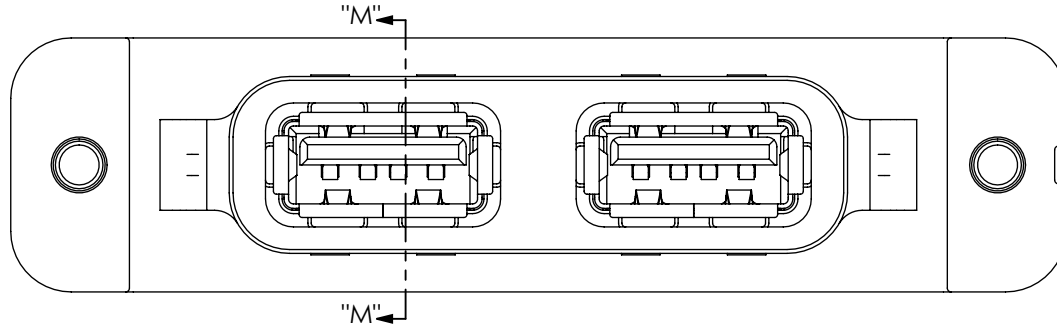
520 PARK EAST BLVD, NEW ALBANY, IN 47150
PHONE: 812-944-6733 FAX: 812-948-5047
e-Mail info@SAMTEC.com code 55322

DESCRIPTION:
RECTANGULAR PANEL BOARD MOUNT USB- A

DWG. NO.
RPBU-XX-X-A-XX-XX

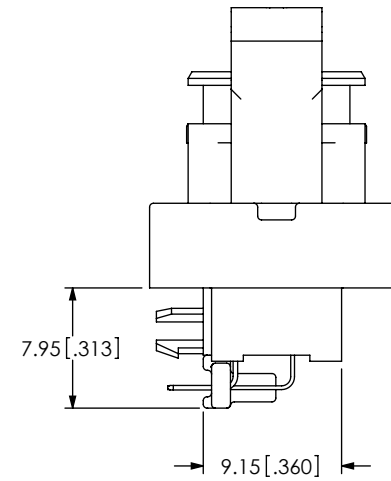
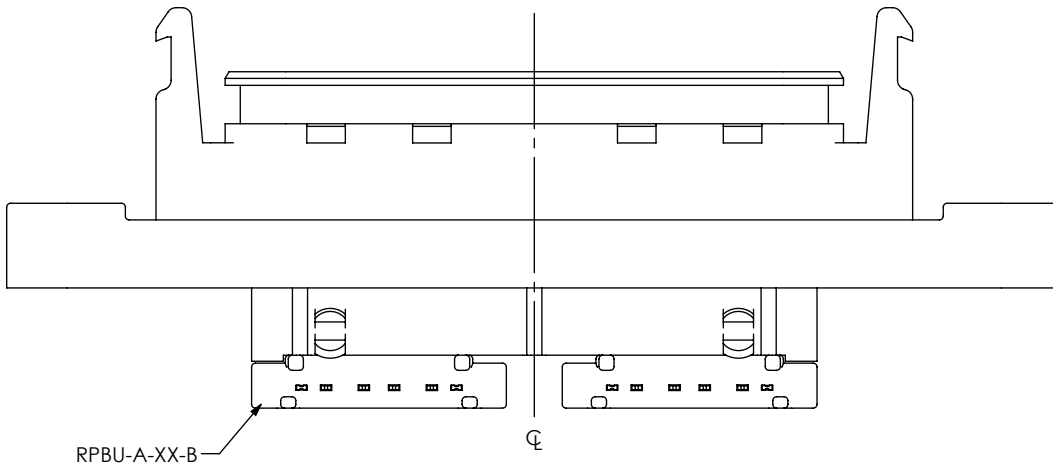
BY: T NEWTON 02/12/2010 SHEET 8 OF 10

-02 RA: IN-PROCESS 5
 FILL EPOXY-01
 (SAME AS -01 RA: IN-PROCESS 5, EXCEPT AS SHOWN)



SECTION "M"- "M"

-02 RA: IN-PROCESS 6
 FILL RPBU-A-XX-B
 (SAME AS -01 RA: IN-PROCESS 6, EXCEPT AS SHOWN)



PROPRIETARY NOTE
 THIS DOCUMENT CONTAINS INFORMATION
 CONFIDENTIAL AND PROPRIETARY TO
 SAMTEC, INC. AND SHALL NOT BE REPRODUCED
 OR TRANSFERRED TO OTHER DOCUMENTS OR
 DISCLOSED TO OTHERS OR USED FOR ANY
 PURPOSE OTHER THAN THAT WHICH IT WAS
 OBTAINED WITHOUT THE EXPRESSED WRITTEN
 CONSENT OF SAMTEC, INC.

DO NOT SCALE DRAWING
 SHEET SCALE: 2:1

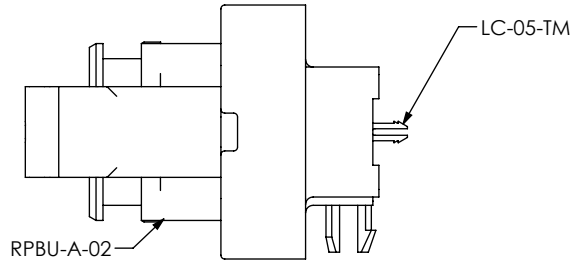
samtec
 520 PARK EAST BLVD, NEW ALBANY, IN 47150
 PHONE: 812-944-6733 FAX: 812-948-5047
 e-Mail: info@SAMTEC.com code 55322

DESCRIPTION:
 RECTANGULAR PANEL BOARD MOUNT USB- A

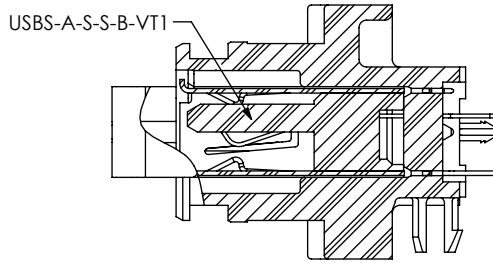
DWG. NO.
 RPBU-XX-X-A-XX-XX

BY: T NEWTON 02/12/2010 SHEET 9 OF 10

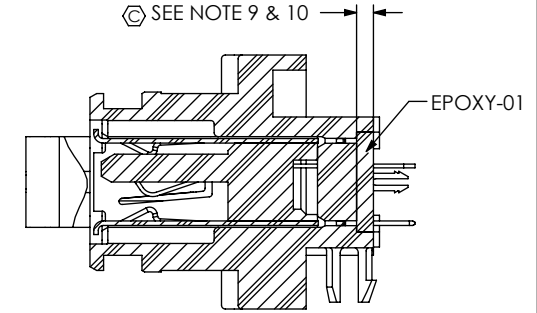
-02 VT: IN-PROCESS 1
 FILL LC-05-TM
 (SAME AS -01 VT: IN-PROCESS 1)



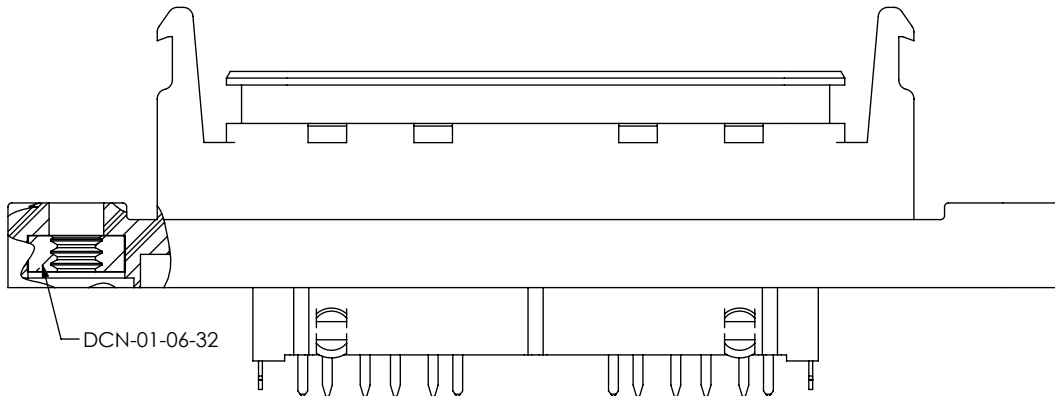
-02 VT: IN-PROCESS 2
 FILL USBS-A-S-S-B-VT1
 (SAME AS -02 RA: IN-PROCESS 1, EXCEPT AS SHOWN)



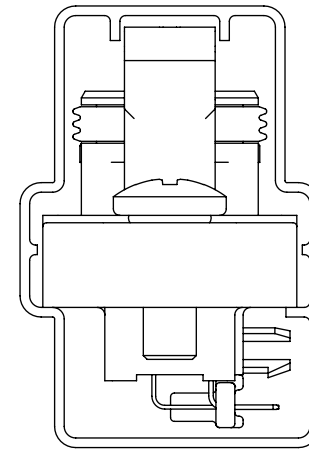
-02 VT: IN-PROCESS 4
 FILL EPOXY-01
 (SAME AS -02 RA: IN-PROCESS 5, EXCEPT AS SHOWN)



-02 VT: IN-PROCESS 3
 FILL DCN-01-06-32 & HEAT STAKE
 (SAME AS -02 RA: IN-PROCESS 4, EXCEPT AS SHOWN)



PACKAGING VIEW
 (SEE NOTE 7)



TUBE: PT-RPBU001
 PLUG: TP-31

PROPRIETARY NOTE
 THIS DOCUMENT CONTAINS INFORMATION
 CONFIDENTIAL AND PROPRIETARY TO
 SAMTEC, INC. AND SHALL NOT BE REPRODUCED
 OR TRANSFERRED TO OTHER DOCUMENTS OR
 DISCLOSED TO OTHERS OR USED FOR ANY
 PURPOSE OTHER THAN THAT WHICH IT WAS
 OBTAINED WITHOUT THE EXPRESSED WRITTEN
 CONSENT OF SAMTEC, INC.

DO NOT SCALE DRAWING

SHEET SCALE: 2:1

samtec

520 PARK EAST BLVD, NEW ALBANY, IN 47150
 PHONE: 812-944-6733 FAX: 812-948-5047
 e-Mail info@SAMTEC.com code 55322

DESCRIPTION:
 RECTANGULAR PANEL BOARD MOUNT USB- A

DWG. NO.
 RPBU-XX-X-A-XX-XX

BY: T NEWTON 02/12/2010 SHEET 10 OF 10