



Chipsmall Limited consists of a professional team with an average of over 10 year of expertise in the distribution of electronic components. Based in Hongkong, we have already established firm and mutual-benefit business relationships with customers from,Europe,America and south Asia,supplying obsolete and hard-to-find components to meet their specific needs.

With the principle of “Quality Parts,Customers Priority,Honest Operation,and Considerate Service”,our business mainly focus on the distribution of electronic components. Line cards we deal with include Microchip,ALPS,ROHM,Xilinx,Pulse,ON,Everlight and Freescale. Main products comprise IC,Modules,Potentiometer,IC Socket,Relay,Connector.Our parts cover such applications as commercial,industrial, and automotives areas.

We are looking forward to setting up business relationship with you and hope to provide you with the best service and solution. Let us make a better world for our industry!



Contact us

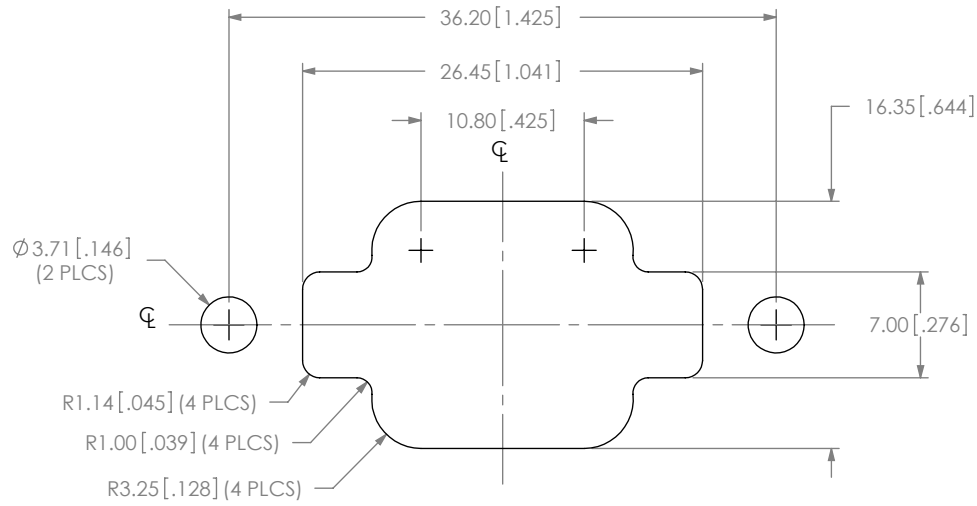
Tel: +86-755-8981 8866 Fax: +86-755-8427 6832

Email & Skype: info@chipsmall.com Web: www.chipsmall.com

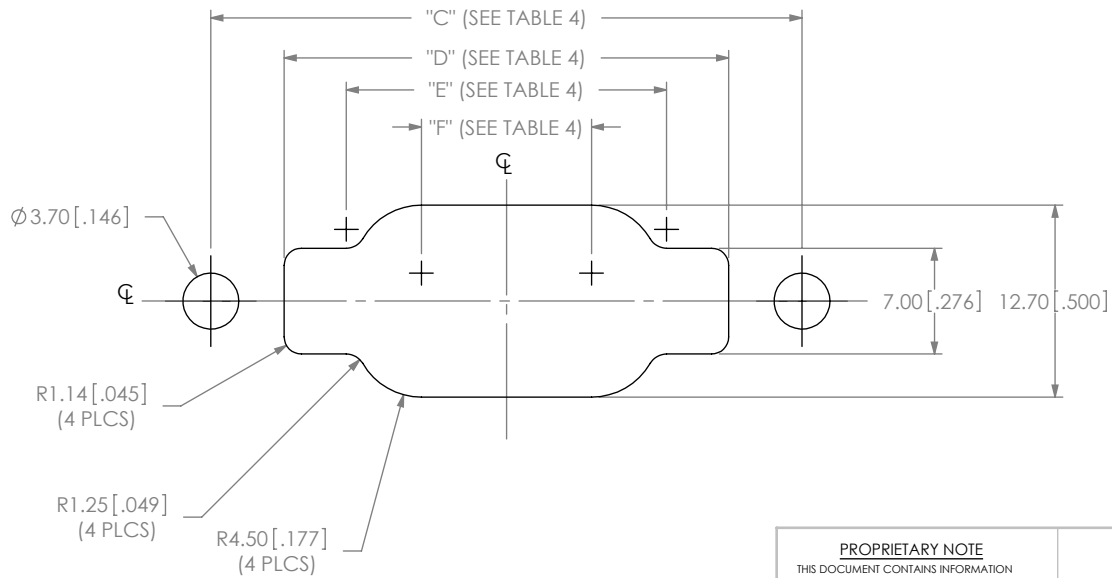
Address: A1208, Overseas Decoration Building, #122 Zhenhua RD., Futian, Shenzhen, China



RECOMMENDED PANEL CUT OUT - TYPE B
(SEE NOTE 27)



RECOMMENDED PANEL CUT OUT - TYPE A
(SEE NOTE 27)



No. OF POS.	"C"	"D"	"E"	"F"
-01	39.10[1.54]	29.40[1.16]	21.18[0.83]	11.25[0.44]
-02	60.75[2.39]	51.05[2.01]	42.83[1.69]	32.90[1.30]

PROPRIETARY NOTE
THIS DOCUMENT CONTAINS INFORMATION CONFIDENTIAL AND PROPRIETARY TO SAMTEC, INC. AND SHALL NOT BE REPRODUCED OR TRANSFERRED TO OTHER DOCUMENTS OR DISCLOSED TO OTHERS OR USED FOR ANY PURPOSE OTHER THAN THAT WHICH IT WAS OBTAINED WITHOUT THE EXPRESSED WRITTEN CONSENT OF SAMTEC, INC.

DO NOT SCALE DRAWING

SHEET SCALE: 1:1

samtec
520 PARK EAST BLVD, NEW ALBANY, IN 47150
PHONE: 812-944-6733 FAX: 812-948-5047
e-Mail info@SAMTEC.com code 55322

DESCRIPTION:
RECTANGULAR PANEL MOUNT CABLE USB

DWG. NO.
RPCU-X-XX.XX-XXX-XX

BY: T NEWTON 05/07/2010 SHEET 2 OF 11

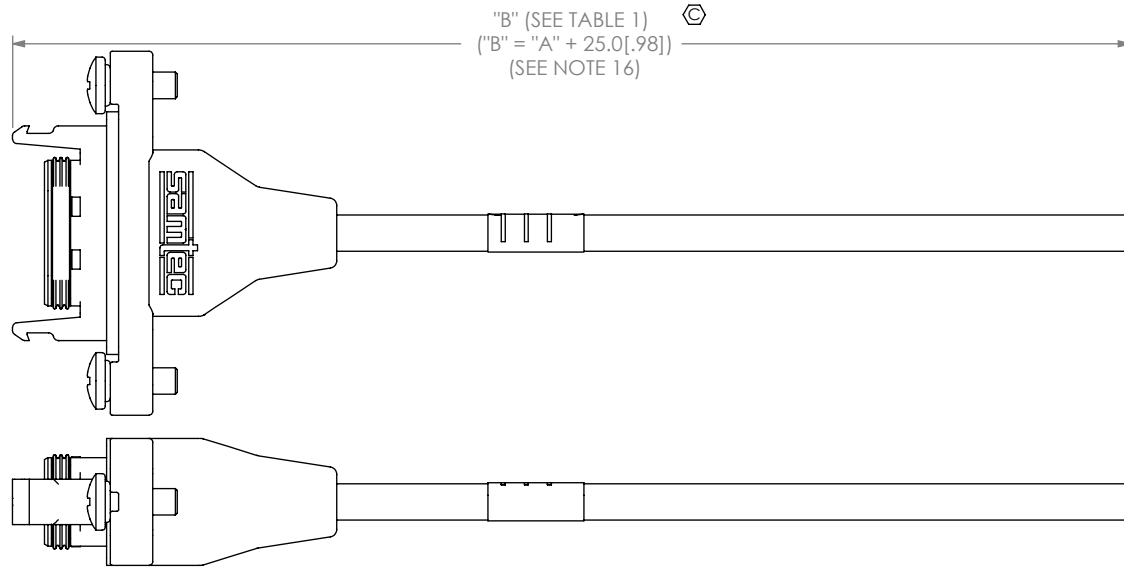
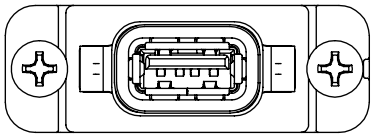


FIG 2
RPCU-X-XX.XX-AMS-BC SHOWN
(DIFFERENT AS SHOWN, OTHERWISE SAME AS FIG 1)

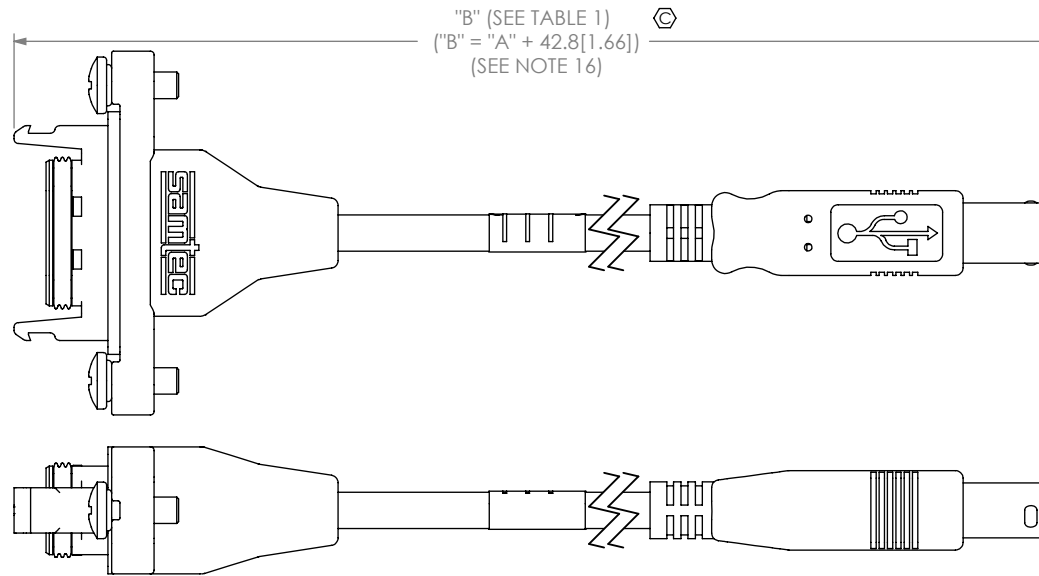
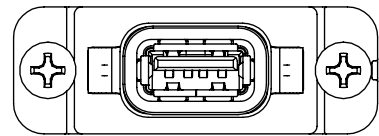
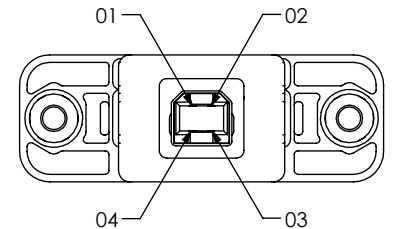


FIG 3
RPCU-X-XX.XX-AMS-BM SHOWN
(DIFFERENT AS SHOWN, OTHERWISE SAME AS FIG 1)



PROPRIETARY NOTE
THIS DOCUMENT CONTAINS INFORMATION
CONFIDENTIAL AND PROPRIETARY TO
SAMTEC, INC. AND SHALL NOT BE REPRODUCED
OR TRANSFERRED TO OTHER DOCUMENTS OR
DISCLOSED TO OTHERS OR USED FOR ANY
PURPOSE OTHER THAN THAT WHICH IT WAS
OBTAINED WITHOUT THE EXPRESSED WRITTEN
CONSENT OF SAMTEC, INC.

DO NOT SCALE DRAWING

SHEET SCALE: 1:1

samtec

520 PARK EAST BLVD, NEW ALBANY, IN 47150
PHONE: 812-944-6733 FAX: 812-948-5047
e-Mail info@SAMTEC.com code 55322

DESCRIPTION:
RECTANGULAR PANEL MOUNT CABLE USB

DWG. NO. **RPCU-X-XX.XX-XXX-XX**

BY: T NEWTON 05/07/2010 SHEET 3 OF 11

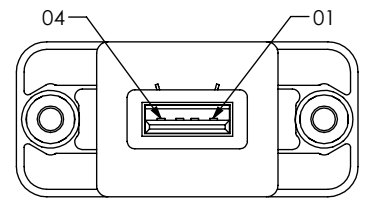
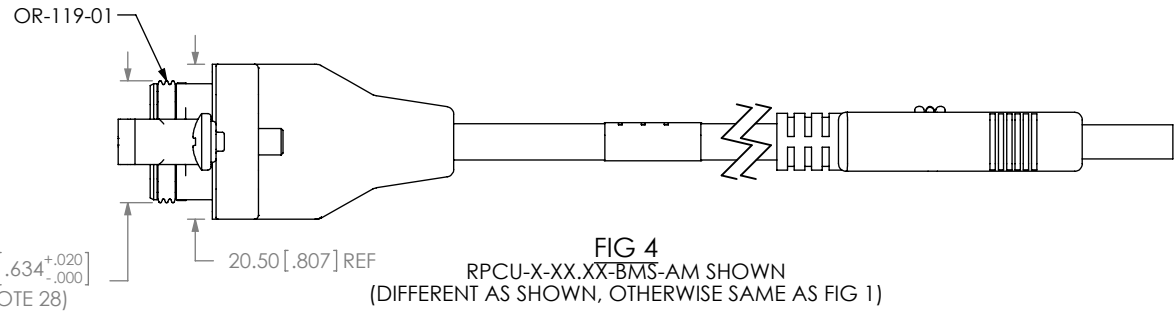
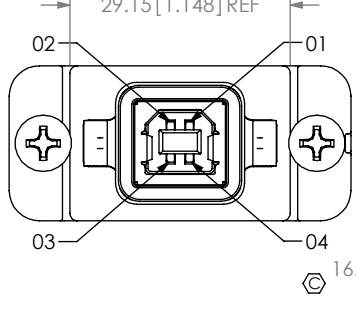
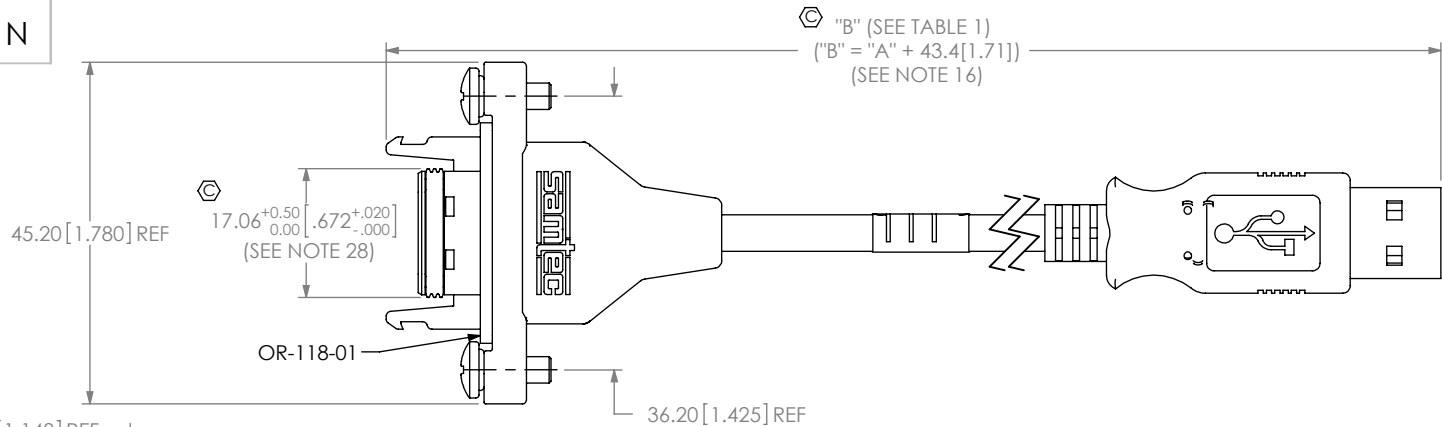


FIG 4
 RPCU-X-XX.XX-BMS-AM SHOWN
 (DIFFERENT AS SHOWN, OTHERWISE SAME AS FIG 1)

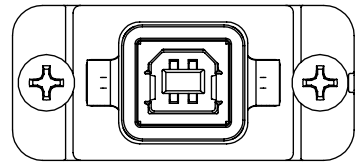
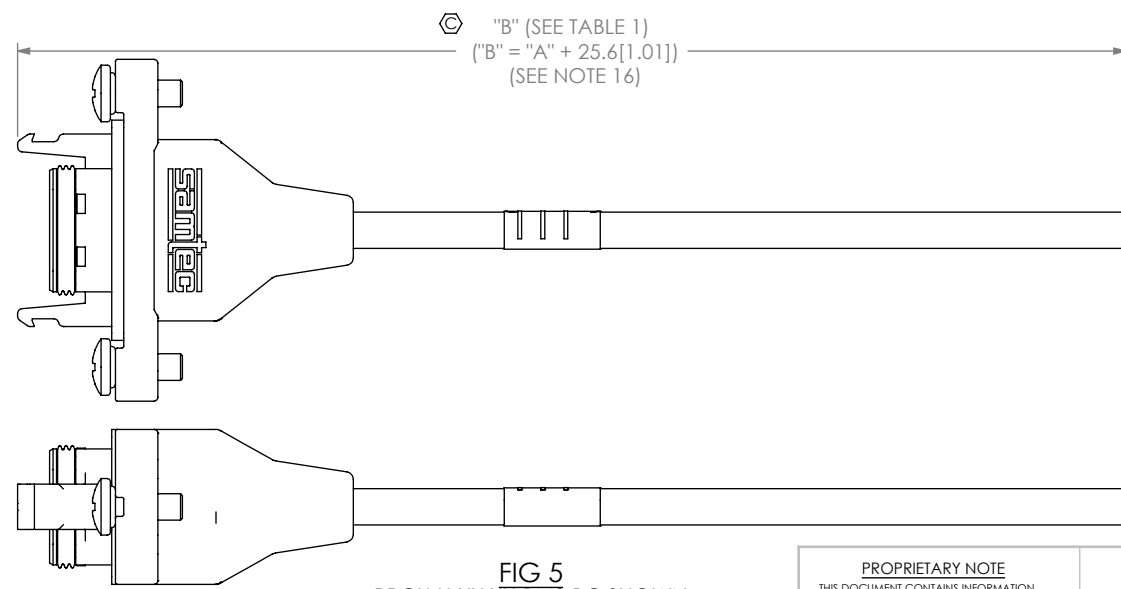


FIG 5
 RPCU-X-XX.XX-BMS-BC SHOWN
 (DIFFERENT AS SHOWN, OTHERWISE SAME AS FIG 4)

PROPRIETARY NOTE
 THIS DOCUMENT CONTAINS INFORMATION CONFIDENTIAL AND PROPRIETARY TO SAMTEC, INC. AND SHALL NOT BE REPRODUCED OR TRANSFERRED TO OTHER DOCUMENTS OR DISCLOSED TO OTHERS OR USED FOR ANY PURPOSE OTHER THAN THAT WHICH IT WAS OBTAINED WITHOUT THE EXPRESSED WRITTEN CONSENT OF SAMTEC, INC.

DO NOT SCALE DRAWING
 SHEET SCALE: 1:1

samtec
 520 PARK EAST BLVD, NEW ALBANY, IN 47150
 PHONE: 812-944-6733 FAX: 812-948-5047
 e-Mail: info@SAMTEC.com code 55322

DESCRIPTION:
 RECTANGULAR PANEL MOUNT CABLE USB

DWG. NO. **RPCU-X-XX.XX-XXX-XX**

BY: T NEWTON 05/07/2010 SHEET 4 OF 11

IN-PROCESS 1
CUT CABLE TO LENGTH AND STRIP OUTER JACKET

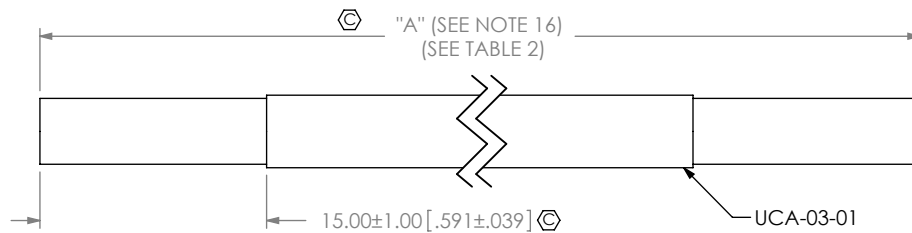
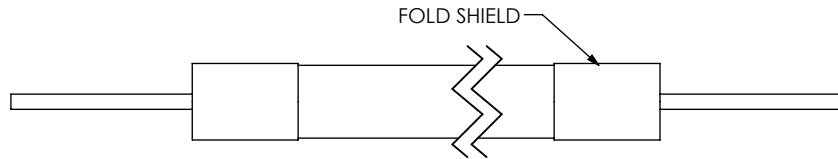
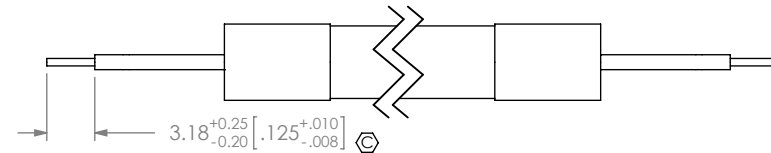


TABLE 2	
END OPTION	"A"
AMS	LENGTH IN MILLIMETERS
AM	LENGTH IN MILLIMETERS
BC	(LENGTH IN MILLIMETERS X 2) + 50.0[2.00]
BM	LENGTH IN MILLIMETERS

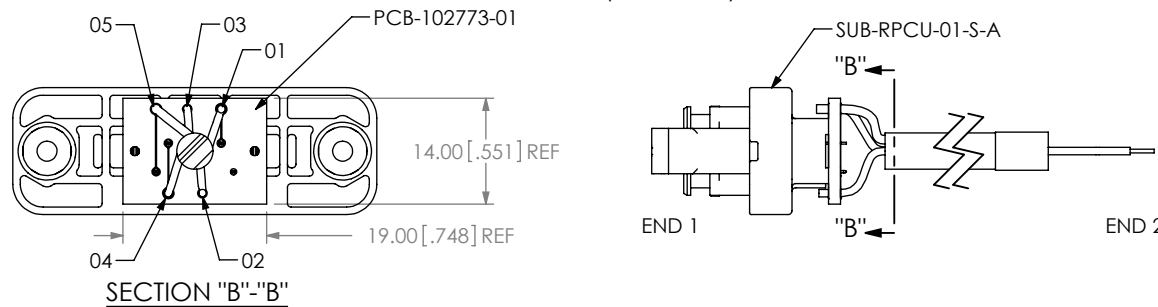
IN-PROCESS 2
FOLD SHIELD BACK AND REMOVE FOIL



IN-PROCESS 3
STRIP INDIVIDUAL WIRES AND DIP IN TIN



-AMS-XX: IN-PROCESS 4
SOLDER CABLE TO PCB
(SEE TABLE 3)



-AMS-AM: IN-PROCESS 5
TERMINATE TO SUB-USB-A-G-B-01 AS SHOWN
(SEE TABLE 3 & NOTE 17)

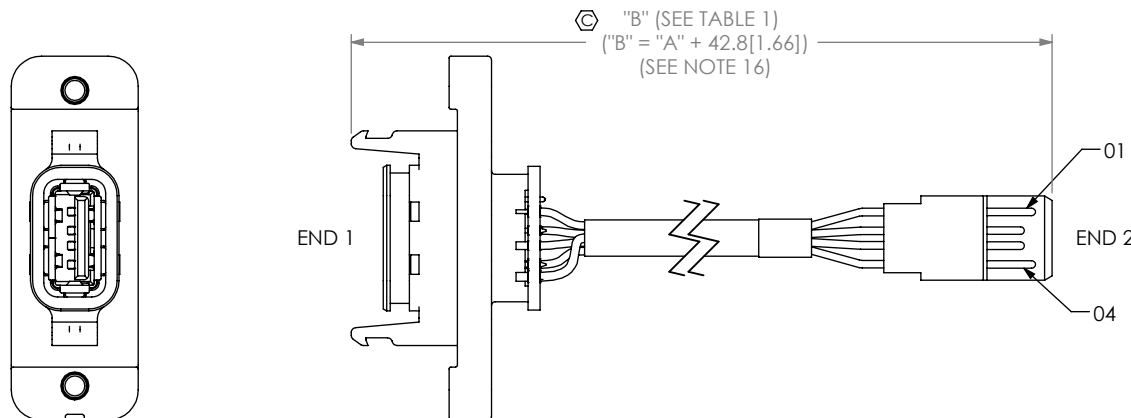


TABLE 3		
END 1 POS	WIRE COLOR	END 2 POS
01	RED	01
02	WHITE	02
03	GREEN	03
04	BLACK	04
05	DRAIN WIRE	05

PROPRIETARY NOTE
THIS DOCUMENT CONTAINS INFORMATION CONFIDENTIAL AND PROPRIETARY TO SAMTEC, INC. AND SHALL NOT BE REPRODUCED OR TRANSFERRED TO OTHER DOCUMENTS OR DISCLOSED TO OTHERS OR USED FOR ANY PURPOSE OTHER THAN THAT WHICH IT WAS OBTAINED WITHOUT THE EXPRESSED WRITTEN CONSENT OF SAMTEC, INC.

DO NOT SCALE DRAWING

SHEET SCALE: 2:1



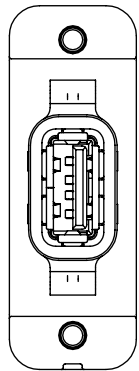
520 PARK EAST BLVD, NEW ALBANY, IN 47150
PHONE: 812-944-6733 FAX: 812-948-5047
e-Mail info@SAMTEC.com code 55322

DESCRIPTION:
RECTANGULAR PANEL MOUNT CABLE USB

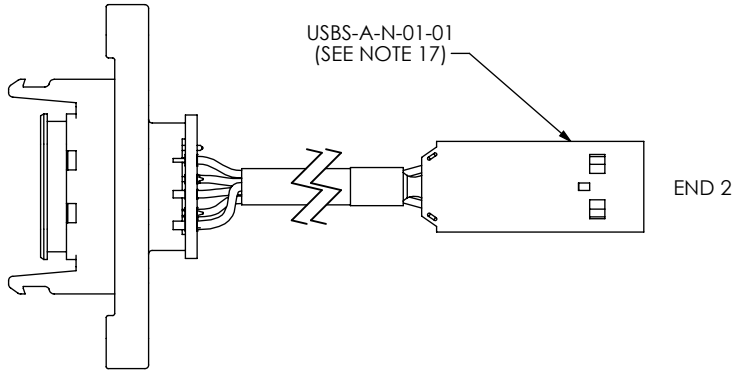
DWG. NO.
RPCU-X-XX.XX-XXX-XX

BY: T NEWTON 05/07/2010 SHEET 5 OF 11

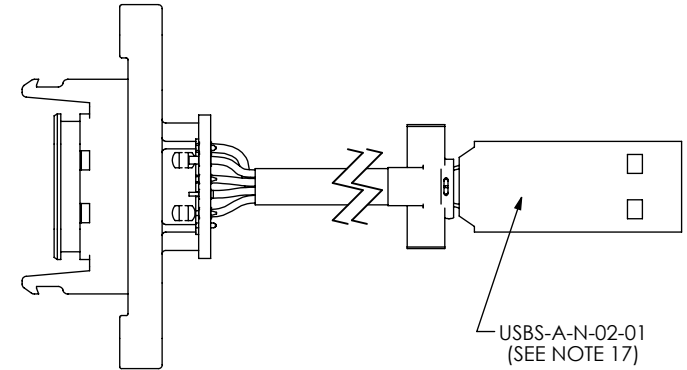
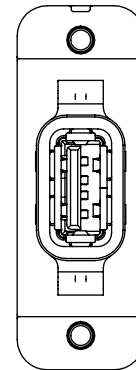
-AMS-AM: IN-PROCESS 6
 ADD USBS-A-N-01-01 SHELL
 (SEE NOTE 17)



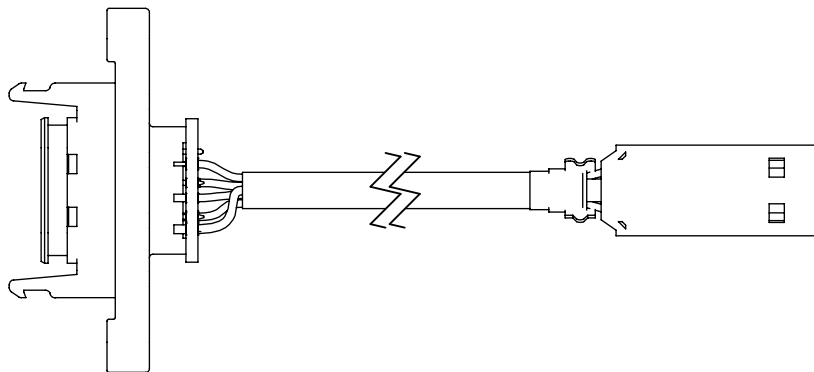
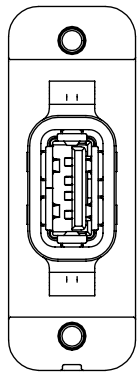
END 1



-AMS-AM: IN-PROCESS 7
 ADD USBS-A-N-02-01 SHELL
 (SEE NOTE 17)



-AMS-AM: IN-PROCESS 8
 CRIMP SHELLS OVER BRAID AND TRIM EXCESS SHIELD



PROPRIETARY NOTE
 THIS DOCUMENT CONTAINS INFORMATION
 CONFIDENTIAL AND PROPRIETARY TO
 SAMTEC, INC. AND SHALL NOT BE REPRODUCED
 OR TRANSFERRED TO OTHER DOCUMENTS OR
 DISCLOSED TO OTHERS OR USED FOR ANY
 PURPOSE OTHER THAN THAT WHICH IT WAS
 OBTAINED WITHOUT THE EXPRESSED WRITTEN
 CONSENT OF SAMTEC, INC.

DO NOT SCALE DRAWING

SHEET SCALE: 1:1



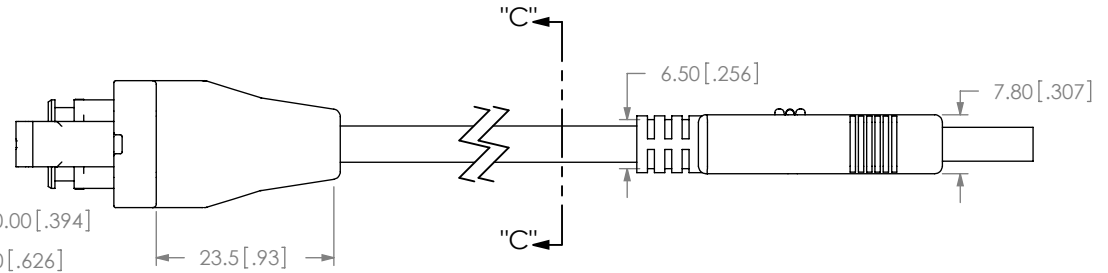
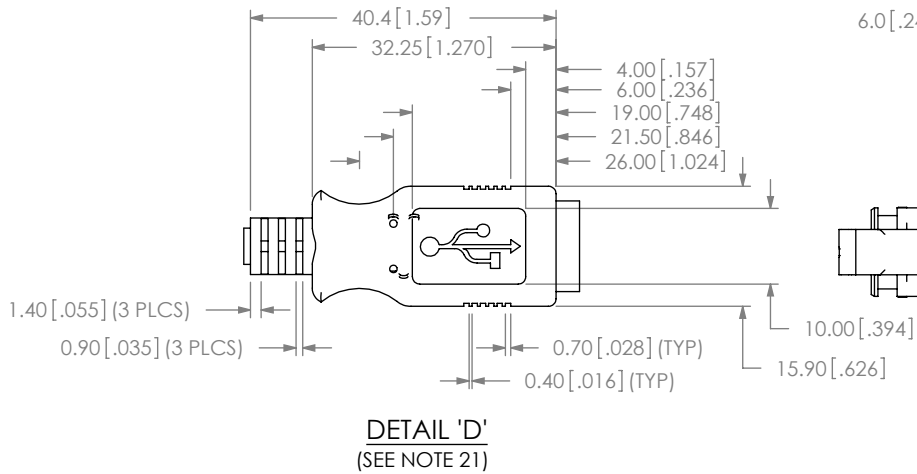
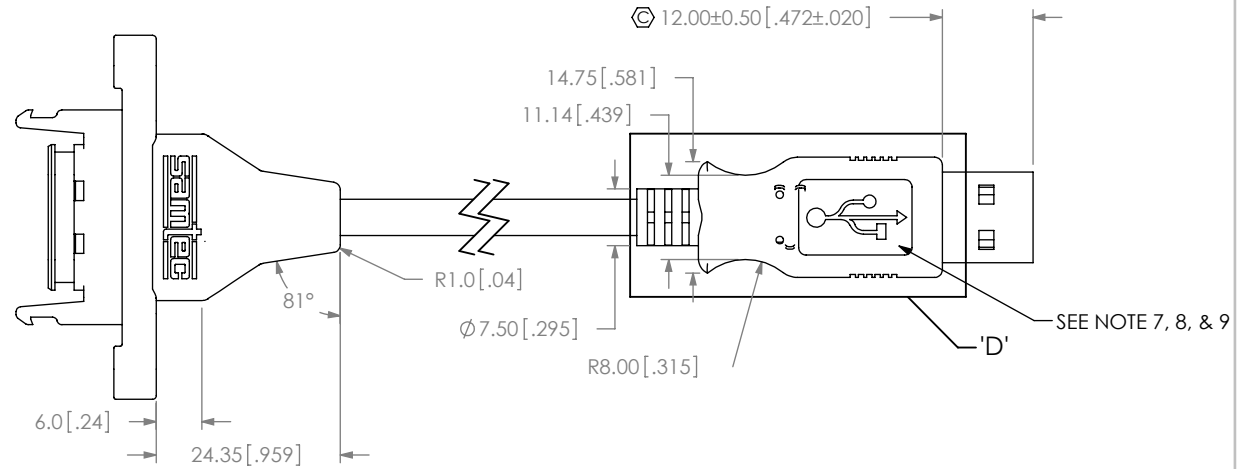
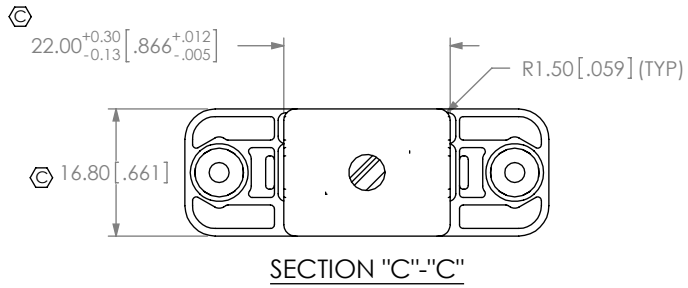
520 PARK EAST BLVD, NEW ALBANY, IN 47150
 PHONE: 812-944-6733 FAX: 812-948-5047
 e-Mail info@SAMTEC.com code 55322

DESCRIPTION:
 RECTANGULAR PANEL MOUNT CABLE USB

DWG. NO. **RPCU-X-XX.XX-XXX-XX**

BY: T NEWTON 05/07/2010 SHEET 6 OF 11

-AMS-AM: IN-PROCESS 9
POSITION WIRES AND OVERMOLD



PROPRIETARY NOTE
THIS DOCUMENT CONTAINS INFORMATION CONFIDENTIAL AND PROPRIETARY TO SAMTEC, INC. AND SHALL NOT BE REPRODUCED OR TRANSFERRED TO OTHER DOCUMENTS OR DISCLOSED TO OTHERS OR USED FOR ANY PURPOSE OTHER THAN THAT WHICH IT WAS OBTAINED WITHOUT THE EXPRESSED WRITTEN CONSENT OF SAMTEC, INC.

DO NOT SCALE DRAWING
SHEET SCALE: 1:1



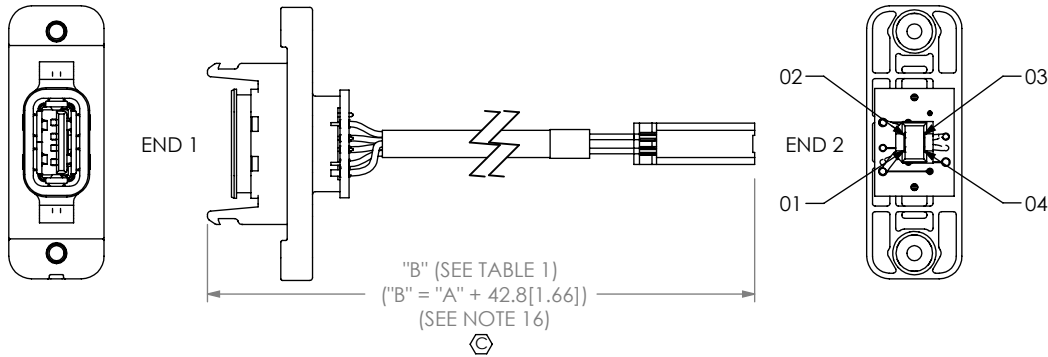
520 PARK EAST BLVD, NEW ALBANY, IN 47150
PHONE: 812-944-6733 FAX: 812-948-5047
e-Mail info@SAMTEC.com code 55322

DESCRIPTION:
RECTANGULAR PANEL MOUNT CABLE USB

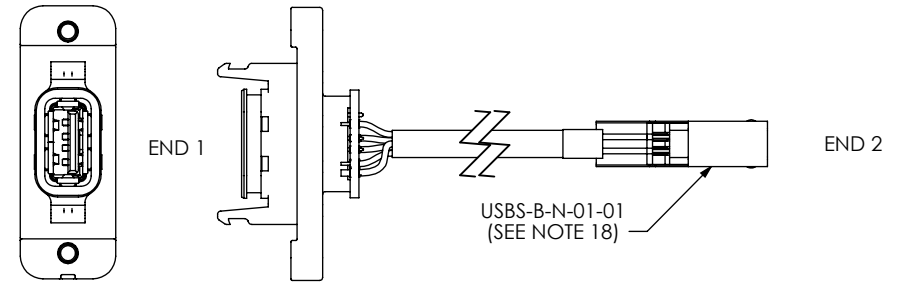
DWG. NO. **RPCU-X-XX.XX-XXX-XX**

BY: T NEWTON 05/07/2010 SHEET 7 OF 11

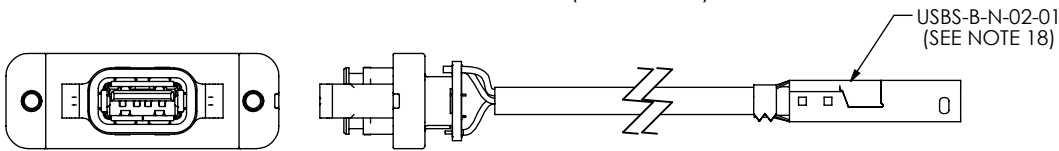
-AMS-BM: IN-PROCESS 5
 TERMINATE TO SUB-USB-B-G-B-01 AS SHOWN
 (SAME AS -AMS-AM: IN-PROCESS 5, EXCEPT AS SHOWN)
 (SEE TABLE 3 & NOTE 18)



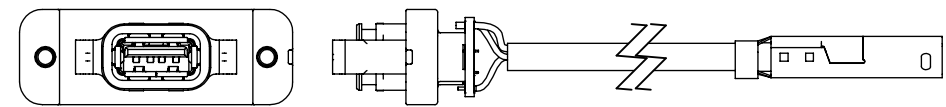
-AMS-BM: IN-PROCESS 6
 ADD USBS-B-N-01-01 SHELLS
 (SAME AS -AMS-AM: IN-PROCESS 6, EXCEPT AS SHOWN)
 (SEE NOTE 18)



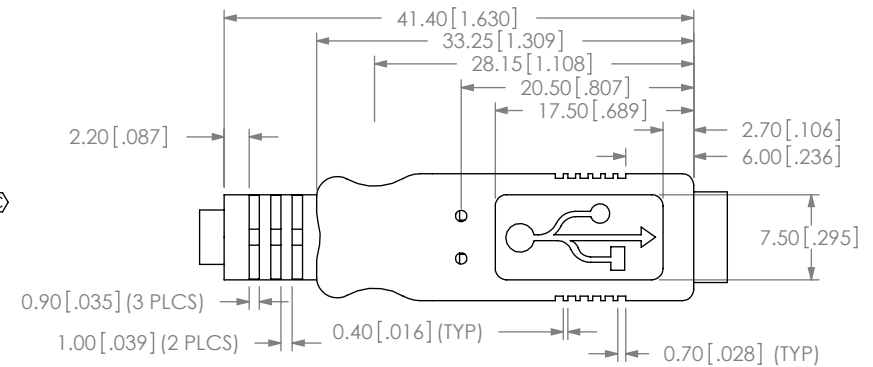
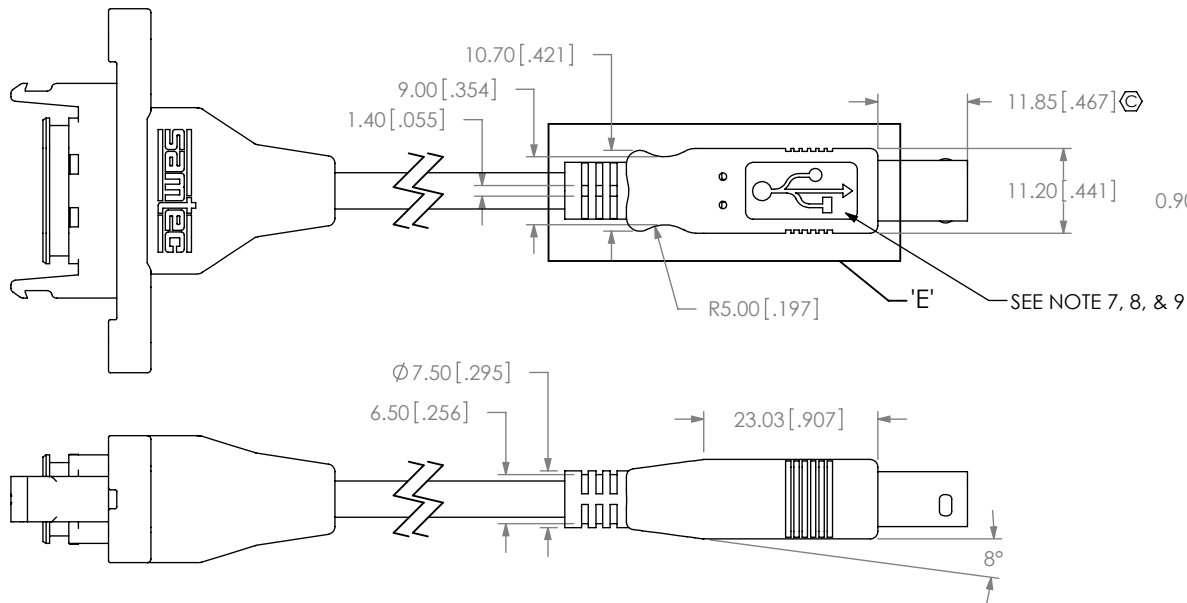
-AMS-BM: IN-PROCESS 7
 ADD USBS-B-N-02-01 SHELLS
 (SAME AS -AMS-AM: IN-PROCESS 7, EXCEPT AS SHOWN)
 (SEE NOTE 18)



-AMS-BM: IN-PROCESS 8
 CRIMP SHELLS OVER BRAID AND TRIM EXCESS SHIELD
 (SAME AS -AMS-AM: IN-PROCESS 8, EXCEPT AS SHOWN)



-AMS-BM: IN-PROCESS 9
 OVERMOLD
 (SAME AS -AMS-AM: IN-PROCESS 9, EXCEPT AS SHOWN)



DETAIL 'E'
 SCALE 1.5:1
 (SEE NOTE 21)

PROPRIETARY NOTE
 THIS DOCUMENT CONTAINS INFORMATION
 CONFIDENTIAL AND PROPRIETARY TO
 SAMTEC, INC. AND SHALL NOT BE REPRODUCED
 OR TRANSFERRED TO OTHER DOCUMENTS OR
 DISCLOSED TO OTHERS OR USED FOR ANY
 PURPOSE OTHER THAN THAT WHICH IT WAS
 OBTAINED WITHOUT THE EXPRESSED WRITTEN
 CONSENT OF SAMTEC, INC.

DO NOT SCALE DRAWING

SHEET SCALE: 1:1



520 PARK EAST BLVD, NEW ALBANY, IN 47150
 PHONE: 812-944-6733 FAX: 812-948-5047
 e-Mail info@SAMTEC.com code 55322

DESCRIPTION:
 RECTANGULAR PANEL MOUNT CABLE USB

DWG. NO.
RPCU-X-XX.XX-XXX-XX

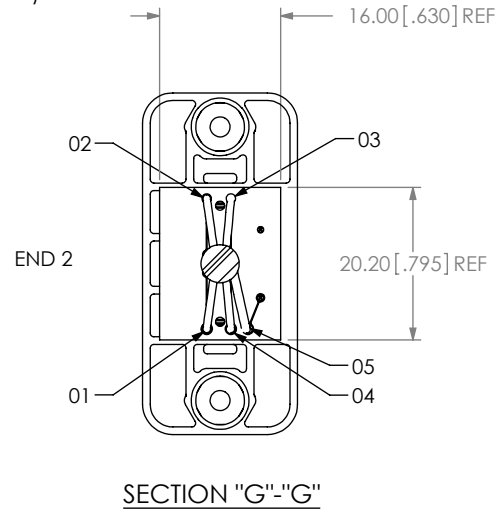
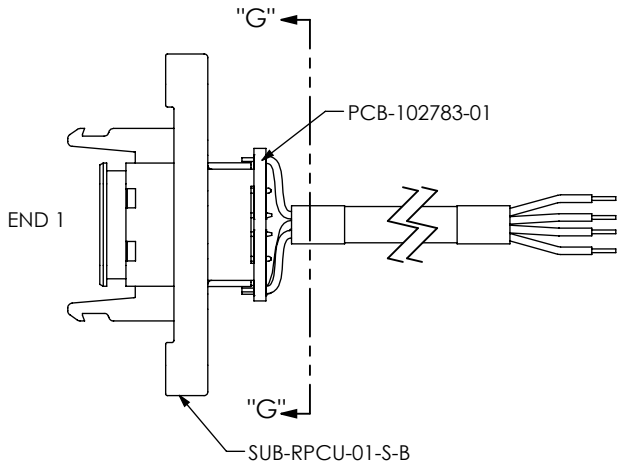
BY: T NEWTON 05/07/2010 SHEET 8 OF 11

REVISION N

-BMS-XX: IN-PROCESS 4

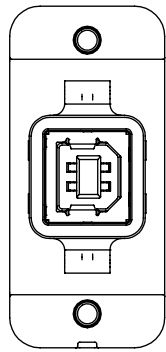
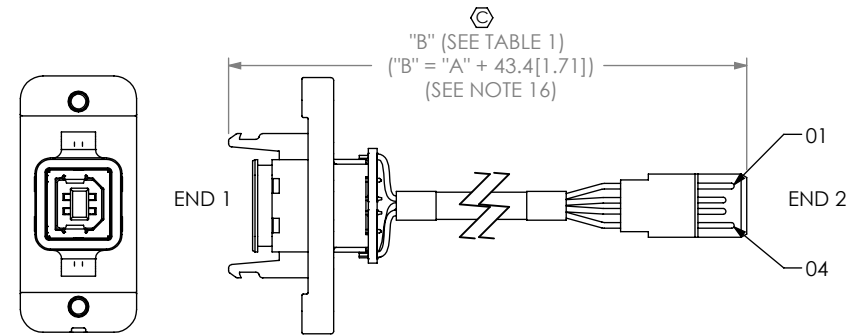
SOLDER CABLE TO PCB

(SAME AS -AMS-XX: IN-PROCESS 4, EXCEPT AS SHOWN)
(SEE TABLE 3)



-BMS-AM: IN-PROCESS 5

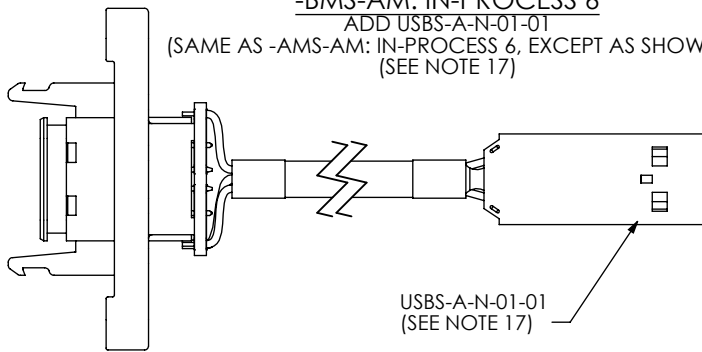
TERMINATE TO SUB-USB-A-G-B-01 AS SHOWN
(SAME AS -AMS-AM: IN-PROCESS 5, EXCEPT AS SHOWN)
(SEE TABLE 3 & NOTE 17)



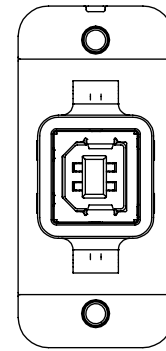
-BMS-AM: IN-PROCESS 6

ADD USBS-A-N-01-01

(SAME AS -AMS-AM: IN-PROCESS 6, EXCEPT AS SHOWN)
(SEE NOTE 17)



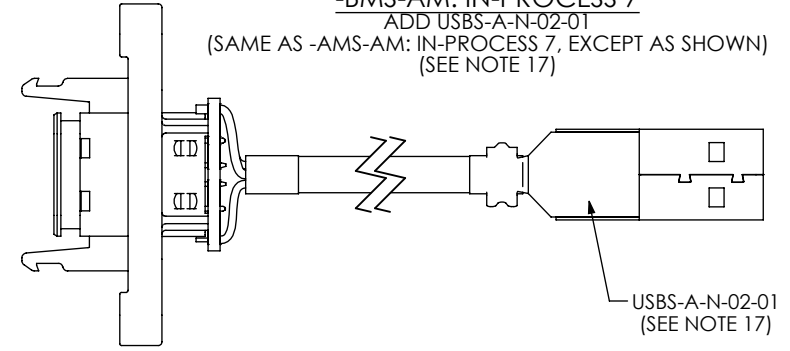
USBS-A-N-01-01
(SEE NOTE 17)



-BMS-AM: IN-PROCESS 7

ADD USBS-A-N-02-01

(SAME AS -AMS-AM: IN-PROCESS 7, EXCEPT AS SHOWN)
(SEE NOTE 17)



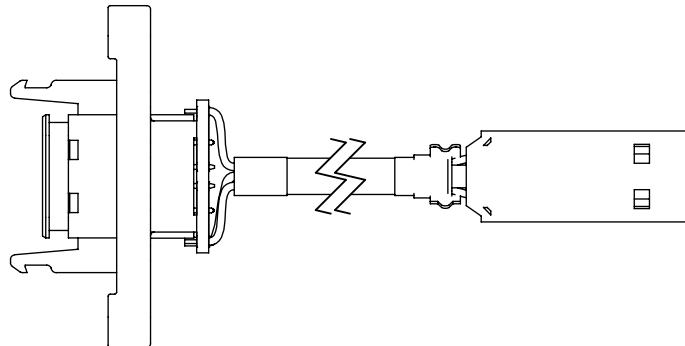
USBS-A-N-02-01
(SEE NOTE 17)

TABLE 3

END 1 POS	WIRE COLOR	END 2 POS
01	RED	01
02	WHITE	02
03	GREEN	03
04	BLACK	04
05	DRAIN WIRE	05

-BMS-AM: IN-PROCESS 8

CRIMP SHELLS OVER BRAID AND TRIM EXCESS SHIELD
(SAME AS -AMS-AM: IN-PROCESS 8, EXCEPT AS SHOWN)



PROPRIETARY NOTE

THIS DOCUMENT CONTAINS INFORMATION CONFIDENTIAL AND PROPRIETARY TO SAMTEC, INC. AND SHALL NOT BE REPRODUCED OR TRANSFERRED TO OTHER DOCUMENTS OR DISCLOSED TO OTHERS OR USED FOR ANY PURPOSE OTHER THAN THAT WHICH IT WAS OBTAINED WITHOUT THE EXPRESSED WRITTEN CONSENT OF SAMTEC, INC.

DO NOT SCALE DRAWING

SHEET SCALE: 1:1



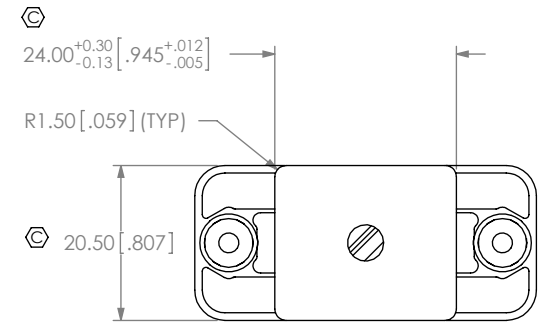
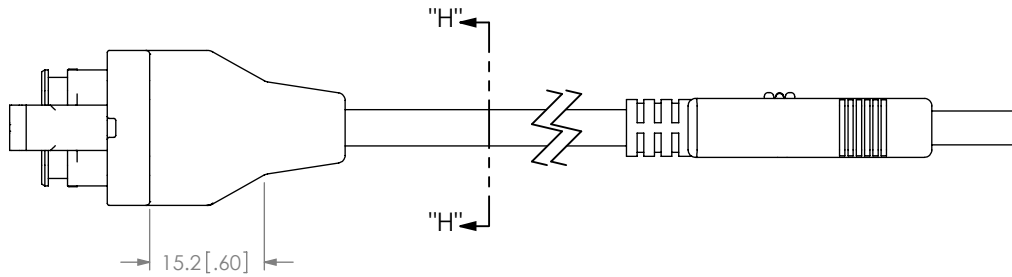
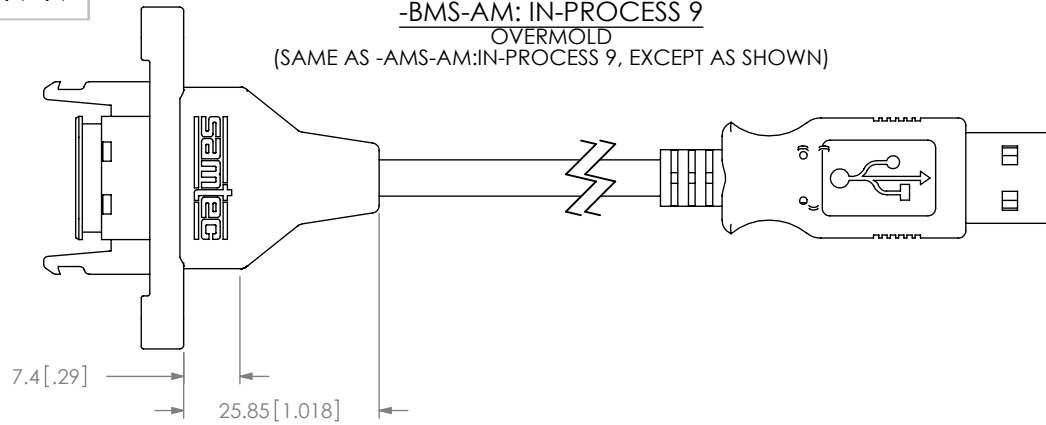
520 PARK EAST BLVD, NEW ALBANY, IN 47150
PHONE: 812-944-6733 FAX: 812-948-5047
e-Mail: info@SAMTEC.com code 55322

DESCRIPTION:
RECTANGULAR PANEL MOUNT CABLE USB

DWG. NO. **RPCU-X-XX.XX-XXX-XX**

BY: T NEWTON 05/07/2010 SHEET 9 OF 11

-BMS-AM: IN-PROCESS 9
OVERMOLD
 (SAME AS -AMS-AM:IN-PROCESS 9, EXCEPT AS SHOWN)



SECTION "H"- "H"

PROPRIETARY NOTE

THIS DOCUMENT CONTAINS INFORMATION CONFIDENTIAL AND PROPRIETARY TO SAMTEC, INC. AND SHALL NOT BE REPRODUCED OR TRANSFERRED TO OTHER DOCUMENTS OR DISCLOSED TO OTHERS OR USED FOR ANY PURPOSE OTHER THAN THAT WHICH IT WAS OBTAINED WITHOUT THE EXPRESSED WRITTEN CONSENT OF SAMTEC, INC.

DO NOT SCALE DRAWING

SHEET SCALE: 1:1



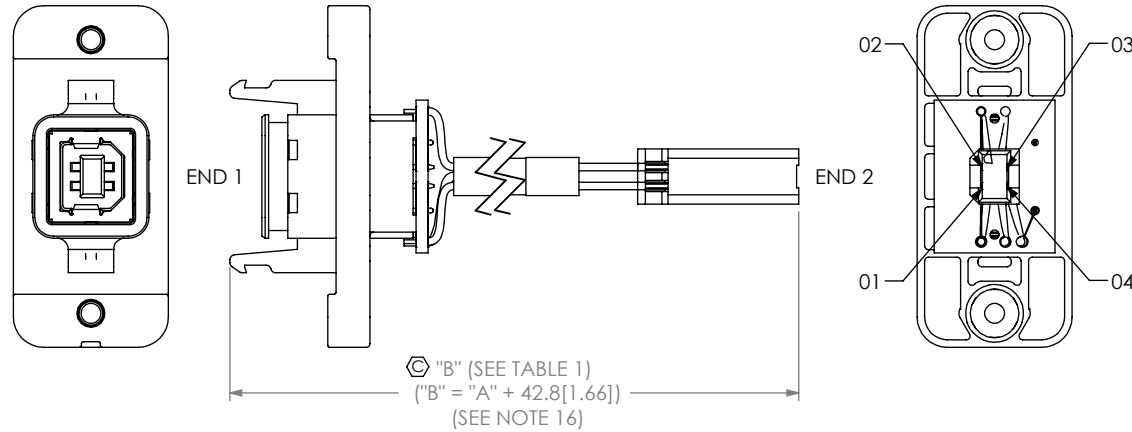
520 PARK EAST BLVD, NEW ALBANY, IN 47150
 PHONE: 812-944-6733 FAX: 812-948-5047
 e-Mail info@SAMTEC.com code 55322

DESCRIPTION:
 RECTANGULAR PANEL MOUNT CABLE USB

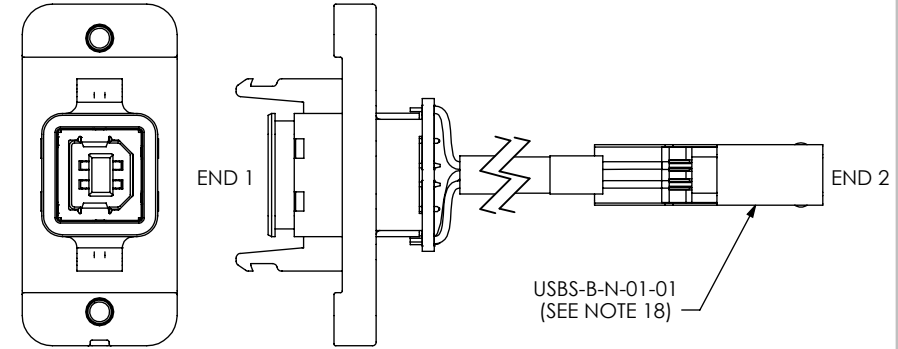
DWG. NO. **RPCU-X-XX.XX-XXX-XX**

BY: T NEWTON 05/07/2010 SHEET 10 OF 11

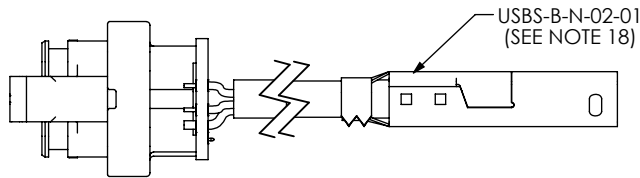
-BMS-BM: IN-PROCESS 5
 TERMINATE TO SUB-USB-B-G-B-01 AS SHOWN
 (SAME AS -AMS-BM: IN-PROCESS 5, EXCEPT AS SHOWN)
 (SEE TABLE 3 & NOTE 18)



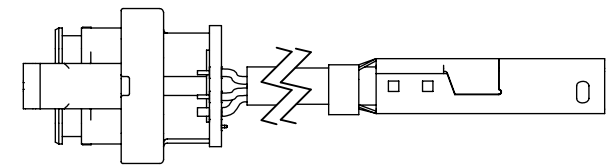
-BMS-BM: IN-PROCESS 6
 ADD USBS-B-N-01-01 SHELLS
 (SAME AS -AMS-BM: IN-PROCESS 6, EXCEPT AS SHOWN)
 (SEE NOTE 18)



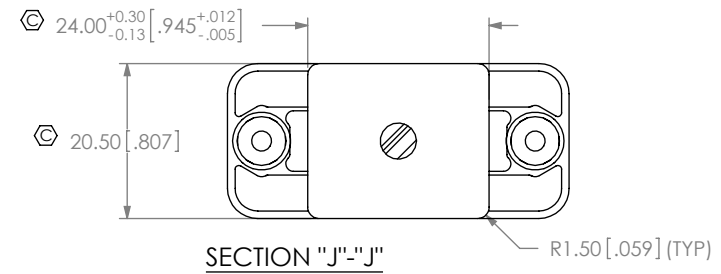
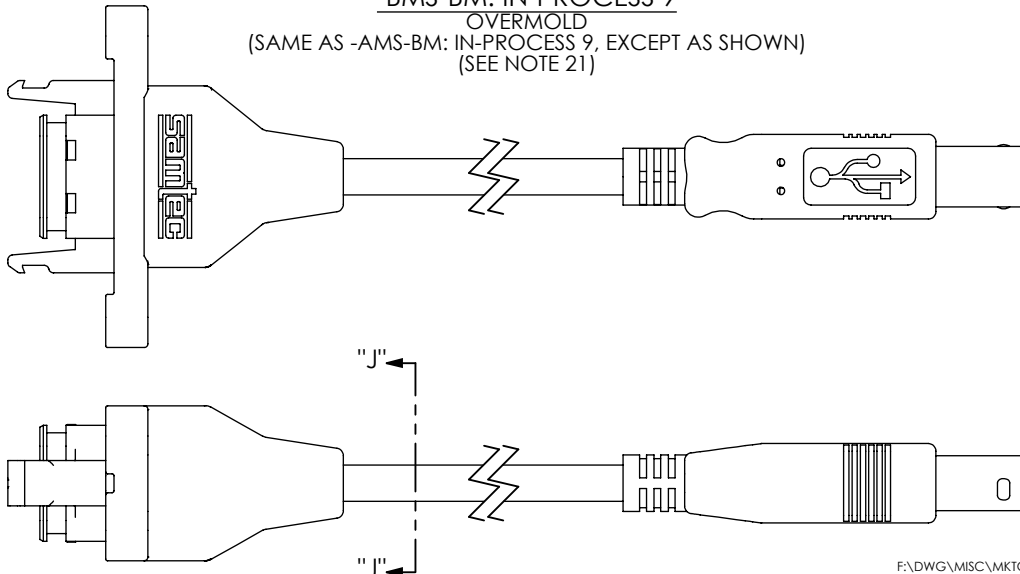
-BMS-BM: IN-PROCESS 7
 ADD USBS-B-N-02-01 SHELLS
 (SAME AS -AMS-BM: IN-PROCESS 7, EXCEPT AS SHOWN)



-BMS-BM: IN-PROCESS 8
 CRIMP SHELLS OVER BRAID AND TRIM EXCESS SHIELD
 (SAME AS -AMS-BM: IN-PROCESS 8, EXCEPT AS SHOWN)



-BMS-BM: IN-PROCESS 9
 OVERMOLD
 (SAME AS -AMS-BM: IN-PROCESS 9, EXCEPT AS SHOWN)
 (SEE NOTE 21)



PROPRIETARY NOTE
 THIS DOCUMENT CONTAINS INFORMATION
 CONFIDENTIAL AND PROPRIETARY TO
 SAMTEC, INC. AND SHALL NOT BE REPRODUCED
 OR TRANSFERRED TO OTHER DOCUMENTS OR
 DISCLOSED TO OTHERS OR USED FOR ANY
 PURPOSE OTHER THAN THAT WHICH IT WAS
 OBTAINED WITHOUT THE EXPRESSED WRITTEN
 CONSENT OF SAMTEC, INC.

DO NOT SCALE DRAWING

SHEET SCALE: 1:1



520 PARK EAST BLVD, NEW ALBANY, IN 47150
 PHONE: 812-944-6733 FAX: 812-948-5047
 e-Mail info@SAMTEC.com code 55322

DESCRIPTION:
 RECTANGULAR PANEL MOUNT CABLE USB
 DWG. NO.

RPCU-X-XX.XX-XXX-XX

BY: T NEWTON 05/07/2010 SHEET 11 OF 11