



Chipsmall Limited consists of a professional team with an average of over 10 year of expertise in the distribution of electronic components. Based in Hongkong, we have already established firm and mutual-benefit business relationships with customers from,Europe,America and south Asia,supplying obsolete and hard-to-find components to meet their specific needs.

With the principle of “Quality Parts,Customers Priority,Honest Operation,and Considerate Service”,our business mainly focus on the distribution of electronic components. Line cards we deal with include Microchip,ALPS,ROHM,Xilinx,Pulse,ON,Everlight and Freescale. Main products comprise IC,Modules,Potentiometer,IC Socket,Relay,Connector.Our parts cover such applications as commercial,industrial, and automotives areas.

We are looking forward to setting up business relationship with you and hope to provide you with the best service and solution. Let us make a better world for our industry!



## Contact us

Tel: +86-755-8981 8866 Fax: +86-755-8427 6832

Email & Skype: [info@chipsmall.com](mailto:info@chipsmall.com) Web: [www.chipsmall.com](http://www.chipsmall.com)

Address: A1208, Overseas Decoration Building, #122 Zhenhua RD., Futian, Shenzhen, China



# Solid State Relays Accessories Types BBR, RHS00, KK071

CARLO GAVAZZI

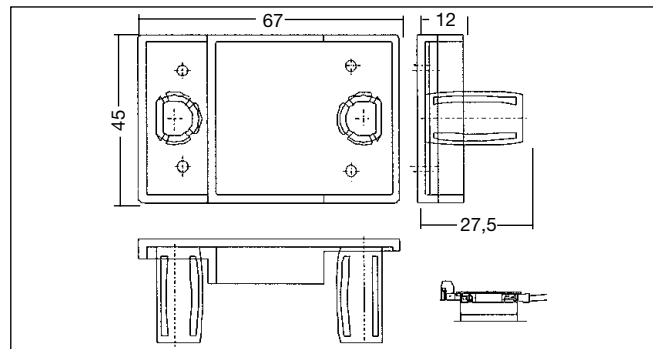
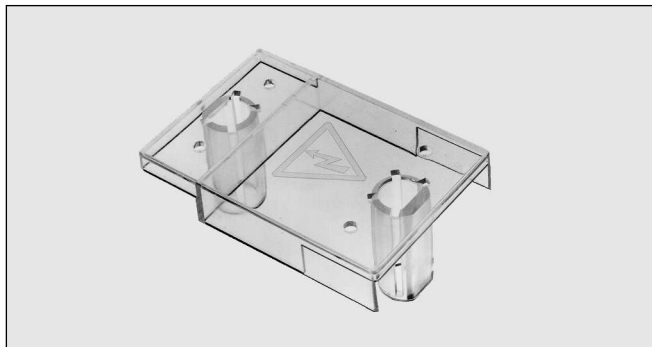
## Protection Covers

### BBR

Cover for 1-phase SSRs. In order to achieve a higher protection degree for 1-phase relays, the cover must be mounted correctly on top of the relay.

**Material**  
**Colour**

Plastic  
Transparent



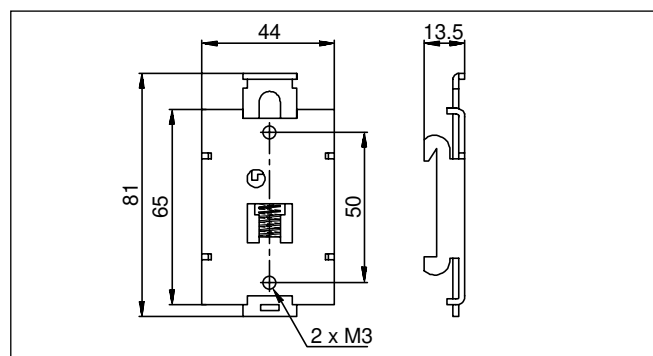
Dimensions in mm

### RHS00

DIN rail adapter RHS00 is intended for mounting a heatsink assembly or a 1-phase relay directly on a DIN-rail.

**Material**

Electroplated steel



Dimensions in mm

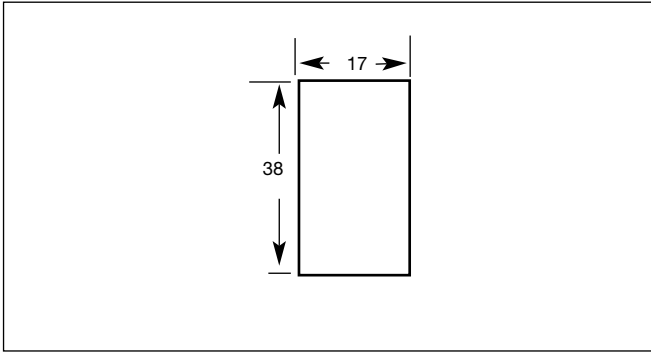


Thermal Pads

**RXHT**  
Pack of 50 pieces thermal pad for RX series size 17 x 38mm intended to be affixed to SSR for thermal transfer between SSR and heatsink



Material	Graphite thermal interface
Rth <sub>cs</sub>	0.25 K/W

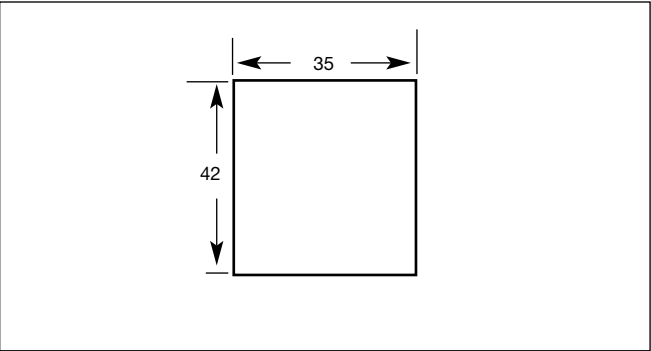


Dimensions in mm

**KK071CUT**  
Pack of 50 pieces thermal pad size 35 x 42mm intended to be affixed to SSR for thermal transfer between SSR and heatsink.



Material	Thermally conductive polyimide film
Rth <sub>cs</sub>	0.4 K/W



Dimensions in mm



DIN-Rail Adapter for PCB SSRs

DIN Rail adapter module intended for mounting of PCB relays series RP on DIN rail. RPM1 is intended for 230 VAC modules. For higher nominal operational voltages (up to 600 VAC) RPM2 is available.

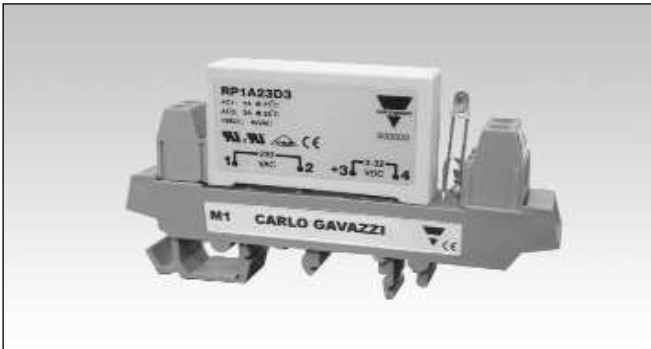
RP SSR is not included. Add ‘M1’ or ‘M2’ suffix to RP type for mounting of RP SSR to DIN rail adaptor.

Note that when the RP.10 is mounted on a DIN Rail (and hence vertically mounted), a derating factor has to be applied to the SSR.

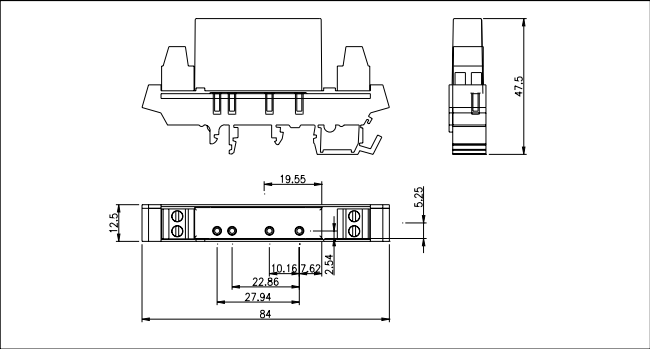
Ordering Key RPM1 V

RP DIN rail adaptor module Options

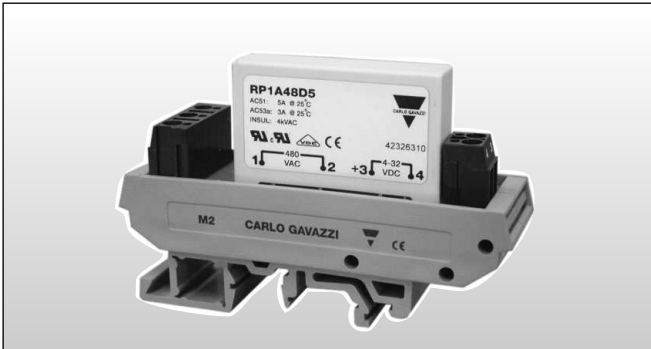
- V: Integrated varistor across RPM1 output terminals
  - P: RPM1 with pins for easy removal of RP unit\*
  - PD: RPM1 with pins for easy removal of RP unit including an LED for control status indication \*
- \* Not available with RPM2



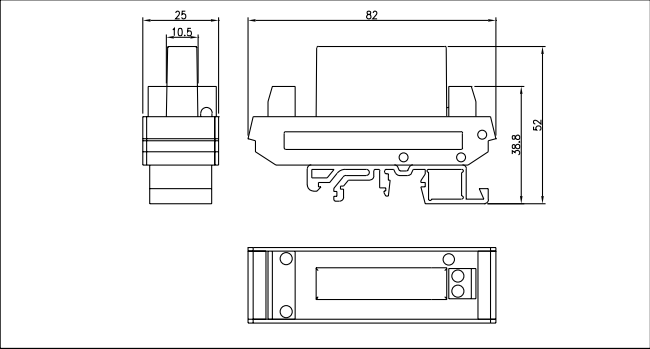
RPM1



Dimensions in mm



RPM2



Dimensions in mm

Housing Specifications

Housing material	PA, green, UL94 V0	
Weight	RPM1	approx. 15g
	RPM2	approx. 20g
Terminal screws	M3	
Terminal cable size max. (stranded)	1.5mm <sup>2</sup>	
Mounting torque max.	0.5 Nm	
Operating temperature	-20° to + 70°C [-4 to +158°F]	
Storage temperature	-40° to + 100°C [-40° to +212°F]	
DIN rail guide	DIN EN 50022, 50035	

**Fork Terminals**

These fork terminals are suitable for use on the RM, RS and RAM models. The RM635FK can handle conductors with a maximum cross sectional area of 35mm<sup>2</sup> whilst the RM625FK can handle conductors with a maximum cross sectional area of 16mm<sup>2</sup>. The RM635FK is also available with touch protection cover, i.e. RM635FKP

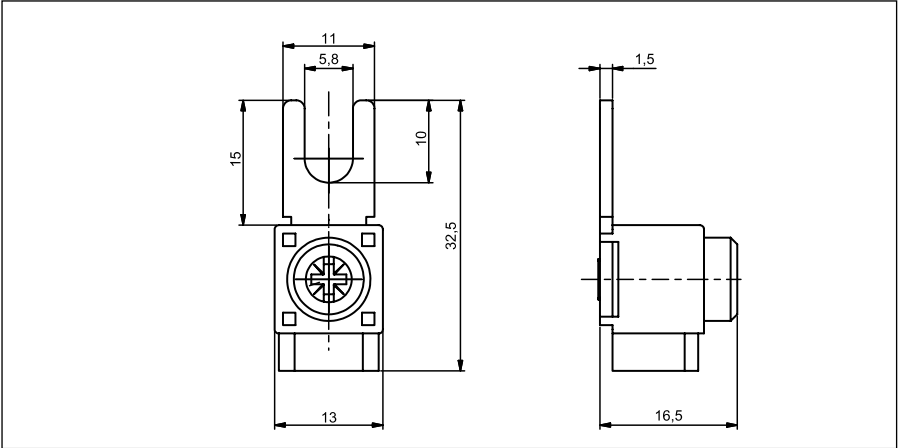
**Ordering Key**

**RM635FK** | **P**

RM terminal adaptor \_\_\_\_\_  
Touch protected (optional) \_\_\_\_\_



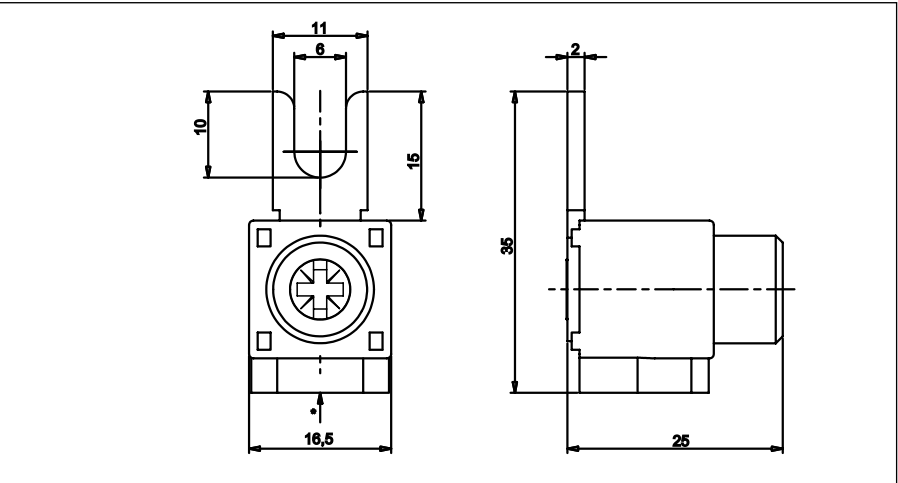
RM625FK



Dimensions in mm



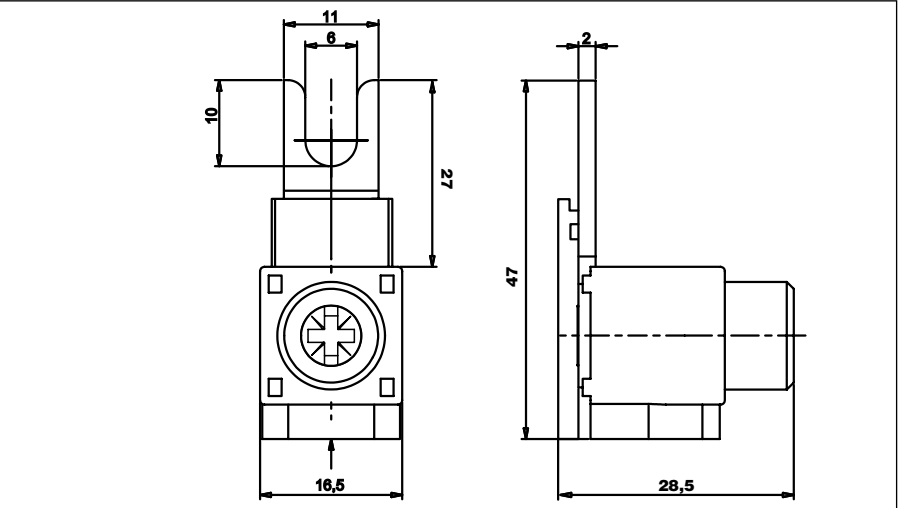
RM635FK



Dimensions in mm



RM635FKP



Dimensions in mm

## Fork Terminals (cont.)

### General Specifications

Housing	RM6x5FK	Cyclopy UL 94 V0	Min. cross-sectional area	
	RM635FKP	Latamid UL 94 V0	RM635FK	6mm <sup>2</sup>
Connection lug		CuZn37 with surface Zn4ymcA	RM625FK	6mm <sup>2</sup>
Max. fastening torque		2Nm	Max. connection diameter	
Max. CSA	RM635FK	50mm <sup>2</sup> solid Cu conductor	RM635FK	10mm
		35mm <sup>2</sup> flexible Cu conductor	RM625FK	6.5mm
	RM625FK	25mm <sup>2</sup> solid Cu conductor	Max. operating voltage	600 VAC
		16mm <sup>2</sup> flexible Cu conductor	Max. handling current	
			RM635FK	100A
			RM625FK	63A
			Pack size	10pcs.