



Chipsmall Limited consists of a professional team with an average of over 10 year of expertise in the distribution of electronic components. Based in Hongkong, we have already established firm and mutual-benefit business relationships with customers from,Europe,America and south Asia,supplying obsolete and hard-to-find components to meet their specific needs.

With the principle of “Quality Parts,Customers Priority,Honest Operation,and Considerate Service”,our business mainly focus on the distribution of electronic components. Line cards we deal with include Microchip,ALPS,ROHM,Xilinx,Pulse,ON,Everlight and Freescale. Main products comprise IC,Modules,Potentiometer,IC Socket,Relay,Connector.Our parts cover such applications as commercial,industrial, and automotives areas.

We are looking forward to setting up business relationship with you and hope to provide you with the best service and solution. Let us make a better world for our industry!



## Contact us

Tel: +86-755-8981 8866 Fax: +86-755-8427 6832

Email & Skype: info@chipsmall.com Web: www.chipsmall.com

Address: A1208, Overseas Decoration Building, #122 Zhenhua RD., Futian, Shenzhen, China



# Features

# Regulated Converters

- Class B EMC Filter built-in
- Reverse Polarity Protected
- Inrush Current Limiting (Soft Start)
- Output Trim Potentiometer
- Output LED Indicator
- DIN Rail Mounting or Panel Mount Options

# RECOM

## DC/DC Converter

### Power Module

## Power Modules

# 15-60 Watt

# Single,

# Dual & Triple

# Outputs



### Description

The Recom Power Module takes a standard 15W-60W converter and mounts it on a PCB with screw terminals, an EMC filter, input protection circuitry and a built-in heatsink to offer a complete power module that can be mounted on a bulkhead or on a standard DIN rail. The Power Module is primarily designed for transport applications such as a GPS vehicle tracking power supply or a radio communications power supply, but will also find many uses in industrial, communications or battery-powered applications.

How to use this datasheet:

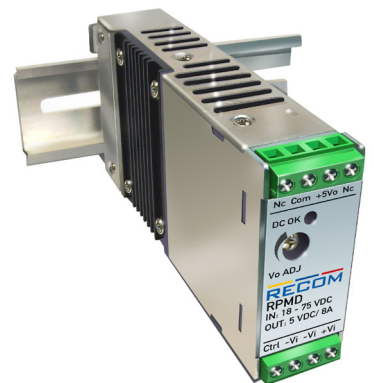
1. Select the converter that suits your application from the converter series list below
2. Decide on DIN Mount (RPM) or bulkhead (RPM) version

Ordering example: 40W, 18-75 VDC in, single 12Vout, DIN Mount = RPMD40-4812SGW

xx = Output Voltage Options Single Outputs: 3.3S = 3.3V 05S = 5V 12S = 12V 15S = 15V

Dual Outputs: 12D = ±12V 15D = ±15V

Refer to converter series datasheets for detailed information.



IEC60950-1 Certified  
EN60950-1 Certified

### Selection Guide Single and Dual Outputs - Panel Mount Version

Power Module Part Number (Bulkhead Version)	Input Range [VDC]	Output Power [W]	Internal Fuse (Replaceable)	Converter Series
RPM15-24xxS_DFW <sup>(1,2)</sup>	9.5-36	15	T6A	RP15-24xxS_DFW
RPM15-48xxS_DFW <sup>(1,2)</sup>	18-75	15	T4A	RP15-48xxS_DFW
RPM20-24xxS_DFW <sup>(1,2)</sup>	9.5-36	20	T6A	RP20-24xxS_DFW
RPM20-48xxS_DFW <sup>(1,2)</sup>	18-75	20	T4A	RP20-48xxS_DFW
RPM30-12xxS_DE <sup>(2)</sup>	9.5-18	30	T6A	RP30-12xxS_DE
RPM30-24xxS_DE <sup>(2)</sup>	18-36	30	T6A	RP30-24xxS_DE
RPM30-24xxS_DEW <sup>(1,2)</sup>	10-40	30	T6A	RP30-24xxS_DEW
RPM30-48xxS_DE <sup>(2)</sup>	36-75	30	T4A	RP30-48xxS_DE
RPM30-48xxS_DEW <sup>(1,2)</sup>	18-75	30	T4A	RP30-48xxS_DEW
RPM40-12xxS_DG <sup>(2)</sup>	9.5-18	40	T8A	RP40-12xxS_DG
RPM40-24xxS_DG <sup>(2)</sup>	18-36	40	T8A	RP40-24xxS_DG
RPM40-24xxS_DGW <sup>(1,2)</sup>	9.5-36	40	T8A	RP40-24xxS_DGW
RPM40-48xxS_DG <sup>(2)</sup>	36-75	40	T4A	RP40-48xxS_DG
RPM40-48xxS_DGW <sup>(1,2)</sup>	18-75	40	T4A	RP40-48xxS_DGW
RPM60-24xxSG <sup>(1,2)</sup>	18-36	60	T8A	RP60-24xxSG
RPM60-48xxSG <sup>(1,2)</sup>	36-75	60	T4A	RP60-48xxSG

### Notes:

Note1: add „/N“ for Negative CTRL Logic

Note2: no suffix for Positive CTRL Logic

## Selection Guide Single and Dual Outputs - DIN Rail Version

Power Module Part Number (DIN rail Version)	Input Range [VDC]	Output Power [W]	Internal Fuse (Replaceable)	Converter Series
RPMD15-24xxS_DFW <sup>(1,2)</sup>	9.5-36	15	T6A	RP15-24xxS_DFW
RPMD15-48xxS_DFW <sup>(1,2)</sup>	18-75	15	T4A	RP15-48xxS_DFW
RPMD20-24xxS_DFW <sup>(1,2)</sup>	9.5-36	20	T6A	RP20-24xxS_DFW
RPMD20-48xxS_DFW <sup>(1,2)</sup>	18-75	20	T4A	RP20-48xxS_DFW
RPMD30-12xxS_DE <sup>(2)</sup>	9.5-18	30	T6A	RP30-12xxS_DE
RPMD30-24xxS_DE <sup>(2)</sup>	18-36	30	T6A	RP30-24xxS_DE
RPMD30-48xxS_DE <sup>(2)</sup>	36-75	30	T4A	RP30-48xxS_DE
RPMD30-24xxS_DEW <sup>(1,2)</sup>	10-40	30	T6A	RP30-24xxS_DEW
RPMD30-48xxS_DEW <sup>(1,2)</sup>	18-75	30	T4A	RP30-48xxS_DEW
RPMD40-12xxS_DG <sup>(2)</sup>	9.5-18	40	T8A	RP40-12xxS_DG
RPMD40-24xxS_DG <sup>(2)</sup>	18-36	40	T8A	RP40-24xxS_DG
RPMD40-24xxS_DGW <sup>(1,2)</sup>	9.5-36	40	T8A	RP40-24xxS_DGW
RPMD40-48xxS_DG <sup>(2)</sup>	36-75	40	T4A	RP40-48xxS_DG
RPMD40-48xxS_DGW <sup>(1,2)</sup>	18-75	40	T4A	RP40-48xxS_DGW
RPMD60-24xxSG <sup>(1,2)</sup>	18-36	60	T8A	RP60-24xxSG
RPMD60-48xxSG <sup>(1,2)</sup>	36-75	60	T4A	RP60-48xxSG

### Notes:

Note1: add „N“ for Negative CTRL Logic

Note2: no suffix for Positive CTRL Logic

## Selection Guide Triple Outputs - Panel Mount Version

Power Module Part Number (Bulkhead Version)	Input Range [VDC]	Output Power [W]	Internal Fuse (Replaceable)	Converter Series
RPM40-120512TG <sup>(2)</sup>	9.5-18	40	T8A	RP40-120512TG
RPM40-120515TG <sup>(2)</sup>	9.5-18	40	T8A	RP40-120515TG
RPM40-240512TG <sup>(2)</sup>	18-36	40	T8A	RP40-240512TG
RPM40-240515TG <sup>(2)</sup>	18-36	40	T8A	RP40-240515TG
RPM40-480512TG <sup>(2)</sup>	36-75	40	T4A	RP40-480512TG
RPM40-480515TG <sup>(2)</sup>	36-75	40	T4A	RP40-480515TG

### Notes:

Note2: no suffix for Positive CTRL Logic

## Selection Guide Triple Outputs - DIN Rail Version

Power Module Part Number (Bulkhead Version)	Input Range [VDC]	Output Power [W]	Internal Fuse (Replaceable)	Converter Series
RPMD40-120512TG <sup>(2)</sup>	9.5-18	40	T8A	RP40-120512TG
RPMD40-120515TG <sup>(2)</sup>	9.5-18	40	T8A	RP40-120515TG
RPMD40-240512TG <sup>(2)</sup>	18-36	40	T8A	RP40-240512TG
RPMD40-240515TG <sup>(2)</sup>	18-36	40	T8A	RP40-240515TG
RPMD40-480512TG <sup>(2)</sup>	36-75	40	T4A	RP40-480512TG
RPMD40-480515TG <sup>(2)</sup>	36-75	40	T4A	RP40-480515TG

### Notes:

Note2: no suffix for Positive CTRL Logic

**Specifications** measured at Ta = 25°C, nominal input voltage, full load otherwise noted

Specifications are as in individual converter datasheets with the following exceptions:

**Bulkhead Version**

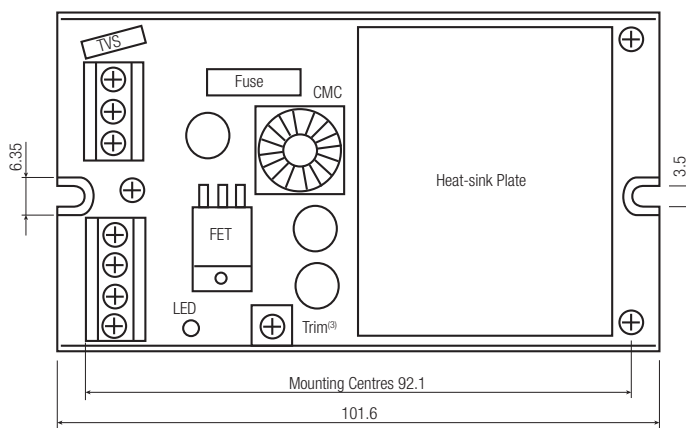
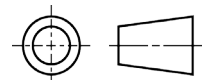
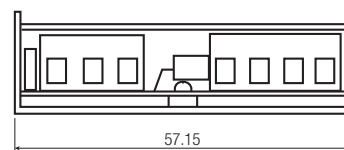
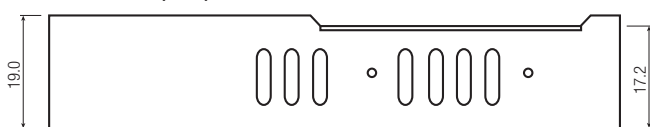
BASIC CHARACTERISTICS				
Parameter	Condition	Min.	Typ.	Max.
Inrush current	nominal Vin and full load			soft start
Start-up time	Power up CTRL Pin		100ms 20ms	

ENVIRONMENTAL		
Parameter	Condition	Value
Thermal Impedance		8.5°C/Watt

SAFETY AND CERTIFICATIONS		
EMC Compliance	Condition	Standard / Criterion
IEC General Safety EN General Safety	LVD20110124	IEC60950-1, 2nd Edition, 2005 + A1:2009 EN60950-1:2006 + A11:2009 +A1:2010;
EMI Standard		EN55022, Class B
ESD		EN61000-4-2, Criteria A
Radiated Immunity		EN61000-4-3, Criteria A
Fast Transient		EN61000-4-4, Criteria A
Surge		EN61000-4-5, Criteria A
Conducted Immunity		EN61000-4-6, Criteria A

DIMENSIONS and PHYSICAL CHARACTERISTICS		
Parameter	Type	Value
Material	Chassis	Aluminium
Package Dimensions (LxWxH)		101.6 x 57.15 x 19.0mm
Package Weight		134g
Connectors		Screw Terminal

**Panel Mount Version (mm)**



**Pin Connections**

Pin #	Single	Dual
1	+Vin	+Vin
2	-Vin	-Vin
3	CTRL	CTRL
4	NC	NC
5	-Vout	-Vout
6	+Vout	Com
7	NC	+Vout

NC: No Connection  
Tolerance: X.X ±0.25mm

**Notes:**

Note3: Trim option depending on converter series, please check datasheet of the converter series

**Selection Guide** typical at nominal input and 25°C unless otherwise noted

Specifications are as in individual converter datasheets with the following exceptions:

PACKAGING INFORMATION		
Parameter	Type	Value
Packaging Dimensions	Cardboard Box	146 x 75 x 29mm
Packaging Quantity		1pc

**DIN-Rail Version**

BASIC CHARACTERISTICS				
Parameter	Condition	Min.	Typ.	Max.
Inrush current	nominal Vin and full load			15A
Start-up time	Power up CTRL Pin		100ms 20ms	

ENVIRONMENTAL		
Parameter	Condition	Value
Thermal Impedance		4.2°C/Watt

SAFETY AND CERTIFICATIONS		
IEC General Safety EN General Safety	LVD20110124	IEC60950-1, 2nd Edition, 2005 + A1:2009 EN60950-1:2006 + A11:2009 +A1:2010;
EMC Compliance	Condition	Standard / Criterion
EMI Standard		EN55022, Class B
ESD		EN61000-4-2, Criteria A
Radiated Immunity		EN61000-4-3, Criteria A
Fast Transient		EN61000-4-4, Criteria A
Surge		EN61000-4-5, Criteria A
Conducted Immunity		EN61000-4-6, Criteria A

DIMENSIONS and PHYSICAL CHARACTERISTICS		
Parameter	Type	Value
Material	Chassis	Aluminium
Package Dimensions (LxWxH)		125.0 x 57.6 x 24.5mm
Package Weight		182g
Connectors		Screw Terminal

continued on next page

**Specifications** measured at Ta = 25°C, nominal input voltage, full load otherwise noted

**DIN Rail Version (mm)**

Pin #	Single	Dual	Triple
1	CTRL	CTRL	CTRL
2	-Vin	-Vin	-Vin
3	-Vin	-Vin	-Vin
4	+Vin	+Vin	+Vin
5	NC	NC	+Aux
6	-Vout	-Vout	Com
7	+Vout	Com	-Aux
8	NC	+Vout	+Vout

**Notes:**  
Note3: Trim option depending on converter series, please check datasheet of the converter series

NC: No Connection  
Tolerance: X.X ±0.5mm

PACKAGING INFORMATION		
Parameter	Type	Value
Packaging Dimensions	Cardboard Box	146 x 75 x 29mm
Packaging Quantity		1pc

The product information and specifications are subject to change without prior notice. RECOM products are not authorized for use in safety-critical applications (such as life support) without RECOM's explicit written consent. A safety-critical application is defined as an application where a failure of a RECOM product may reasonably be expected to endanger or cause loss of life, inflict bodily harm or damage property. The buyer shall indemnify and hold harmless RECOM, its affiliated companies and its representatives against any damage claims in connection with the unauthorized use of RECOM products in such safety-critical applications.