



Chipsmall Limited consists of a professional team with an average of over 10 year of expertise in the distribution of electronic components. Based in Hongkong, we have already established firm and mutual-benefit business relationships with customers from,Europe,America and south Asia,supplying obsolete and hard-to-find components to meet their specific needs.

With the principle of "Quality Parts,Customers Priority,Honest Operation,and Considerate Service",our business mainly focus on the distribution of electronic components. Line cards we deal with include Microchip,ALPS,ROHM,Xilinx,Pulse,ON,Everlight and Freescale. Main products comprise IC,Modules,Potentiometer,IC Socket,Relay,Connector.Our parts cover such applications as commercial,industrial, and automotives areas.

We are looking forward to setting up business relationship with you and hope to provide you with the best service and solution. Let us make a better world for our industry!



Contact us

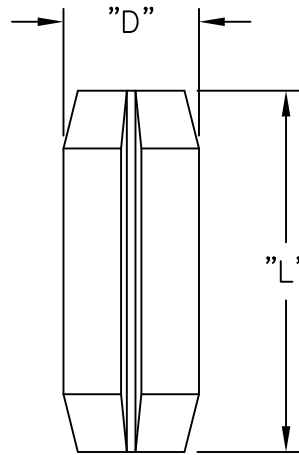
Tel: +86-755-8981 8866 Fax: +86-755-8427 6832

Email & Skype: info@chipsmall.com Web: www.chipsmall.com

Address: A1208, Overseas Decoration Building, #122 Zhenhua RD., Futian, Shenzhen, China



PART NO.	DIM. "L"	DIM. "D"
RRP-250	1/4 (6.4)	3/32 (2.4)
RRP-312	5/16 (8.0)	3/32 (2.4)
RRP-375	3/8 (9.5)	1/8 (3.2)



ROLL PINS:(RRP) FOR USE WITH THE FOLLOWING
CARD INSERTERS/EXTRACTORS:

RRP-250	RRP-312	RRP-375
R1001-062	R11073-062	R1209-062
R1002-093	R11073-093	R1209-093
R1003-125	R11073-125	R1209-125
R1107-062	R1107310-062	
R110710-062	R1107310-093	
	R1107310-125	

NOTES:

1. MATERIAL: 302 STAINLESS STEEL (RMS-320)

TITLE: ROUND ROLL PINS					DWG IN IN (MM)	
TOLERANCES UNLESS NOTED .XX=±.010 .XXX=±.005 FRAC=1/64 ANG=1°	FILE # RRP	DWN: P.B.	APP:		FINAL	
	MAT'L: SEE NOTES	DT: 03-10-95	DT:		PART #	PRINT TYPE
	RE: RICHCO, INC.	RICHCO INC. PO BOX 804238, CHICAGO, 60680 (773) 539-4060		SEE TABLE	CA	

D	CHANGED MATERIAL NOTES, CO 200582	SK 09.14.10
C	SEE ECN #1289 FOR CHANGES	SK 02.15.07
B	CHANGED FILE NO. AND TITLE BLOCK	SM 05.16.01
A	GIVEN PART NUMBER	JB 09.05.95
REV	DESCRIPTION	ENGR DATE