



Chipsmall Limited consists of a professional team with an average of over 10 year of expertise in the distribution of electronic components. Based in Hongkong, we have already established firm and mutual-benefit business relationships with customers from,Europe,America and south Asia,supplying obsolete and hard-to-find components to meet their specific needs.

With the principle of “Quality Parts,Customers Priority,Honest Operation,and Considerate Service”,our business mainly focus on the distribution of electronic components. Line cards we deal with include Microchip,ALPS,ROHM,Xilinx,Pulse,ON,Everlight and Freescale. Main products comprise IC,Modules,Potentiometer,IC Socket,Relay,Connector.Our parts cover such applications as commercial,industrial, and automotives areas.

We are looking forward to setting up business relationship with you and hope to provide you with the best service and solution. Let us make a better world for our industry!



Contact us

Tel: +86-755-8981 8866 Fax: +86-755-8427 6832

Email & Skype: info@chipsmall.com Web: www.chipsmall.com

Address: A1208, Overseas Decoration Building, #122 Zhenhua RD., Futian, Shenzhen, China



REVISION S
DO NOT SCALE FROM THIS PRINT

UNLESS OTHERWISE NOTED TOLERANCES ARE:
DIMENSIONS ARE IN INCHES
ONE PLACE DECIMALS ±.1[2.5] THREE PLACE DECIMALS ±.005 [.13]
TWO PLACE DECIMALS ±.01[.3] FOUR PLACE DECIMALS ±.002 [.05]
ANGLES ± 2°
TITLE: .100 x .100 TERMINAL STRIP w/ MOLDED IN END SHROUDS
DWG NO: TSSH-1XX-01-XXX-DH-XX
SHEET 1 OF 2

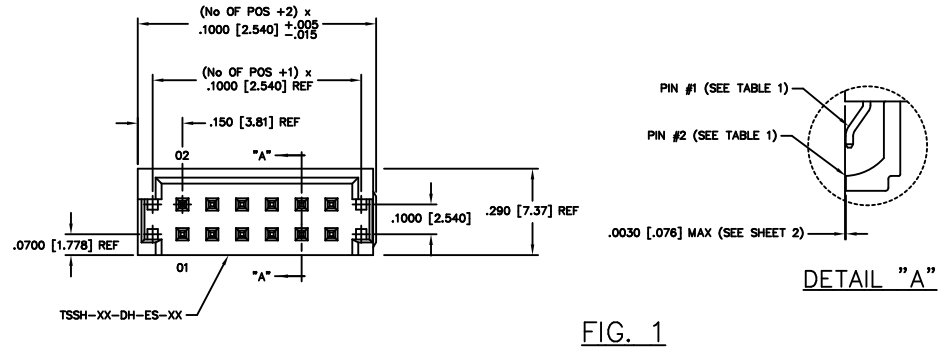
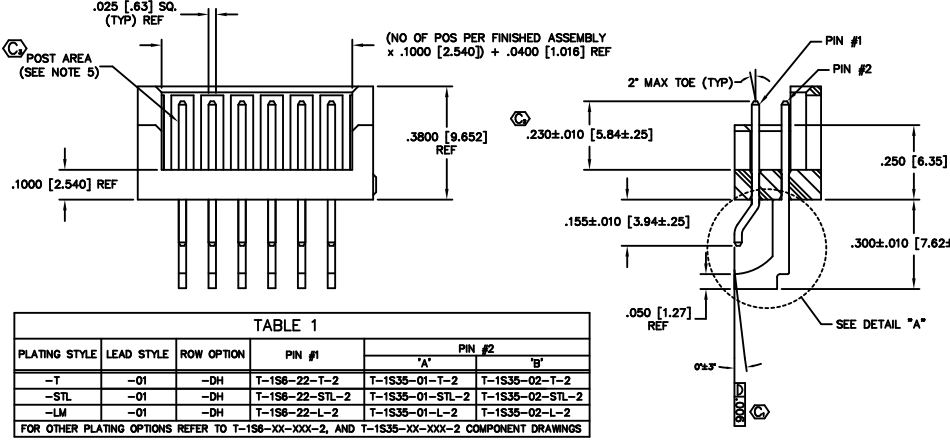


FIG. 1

TSSH-1XX-01-XXX-DH-XX
NO. OF POSITIONS -02 THRU -34
LEAD STYLE -01
PLATING SPEC. (SEE TABLE 1)
-T: MATTE TIN CONTACT AND TAIL
-S: SELECTIVE, 30 Au / 50 NI ON CONTACT, MATTE TIN TAIL
-L: LIGHT SELECTIVE, 10 Au / 50 NI MIN ON CONTACT, MATTE TIN TAIL
-F: FLASH SELECTIVE, 3 Au / 50 NI MIN ON CONTACT, MATTE TIN TAIL
-H: HEAVY GOLD, 30 Au / 50 NI ON CONTACT, 3 Au / 50 NI MIN ON TAIL
-TL: TIN/LEAD (90/10+/-5%) CONTACT AND TAIL
-STL: SELECTIVE, 30 Au / 50 NI MIN ON CONTACT, TIN/LEAD (90/10+/-5%) TAIL
-TM: MATTE TIN CONTACT AND TAIL
-LM: LIGHT SELECTIVE, 10 Au / 50 NI MIN ON CONTACT, MATTE TIN TAIL
-SM: SELECTIVE, 30 Au / 50 NI ON CONTACT, MATTE TIN TAIL
-FM: FLASH SELECTIVE, 3 Au / 50 NI MIN ON CONTACT, MATTE TIN TAIL
OPTION #1
-A: ALIGNMENT PIN (SEE FIG. 2) (MOLDED)
-TR: TAPE AND REEL
-P: PICK AND PLACE PAD (USE PPP-18, SEE FIG. 3, 5 POS. MIN)
ROW OPTION
-DH: DOUBLE HORIZONTAL (USE TSSH-XX-DH-ES-XX-X)

- NOTES:
1. (C) REPRESENTS A CRITICAL DIMENSION.
2. SEE SHEET 2 FOR FLUSH SPECS.
3. MAX FLASH ALLOWED: .010 [.25].
4. PUSHOUT FORCE: 1.5 LB. MINIMUM.
5. NO BANDOLIER MARKS ARE ALLOWED IN THE POST AREA.
6. TUBE PLUG TO BE LOCATED IN THE BODY AREA AND NOT THE TAIL AREA OF THE TUBE.
7. INSULATOR MATERIAL: BLACK, LCP, UL 94 VO



SECTION "A-A" (ROTATED 90°)

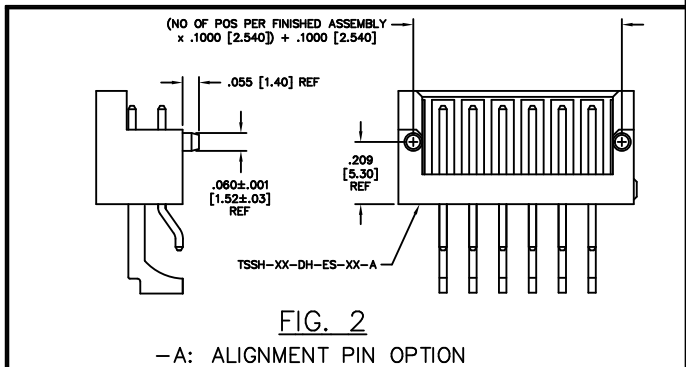
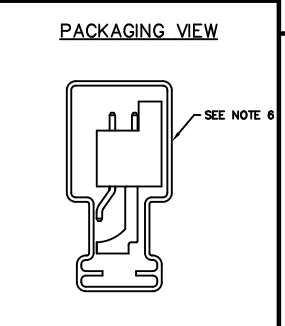


FIG. 2
-A: ALIGNMENT PIN OPTION

PLATING STYLE	LEAD STYLE	ROW OPTION	PIN #1	PIN #2	
				"A"	"B"
-T	-01	-DH	T-1S6-22-T-2	T-1S35-01-T-2	T-1S35-02-T-2
-STL	-01	-DH	T-1S6-22-STL-2	T-1S35-01-STL-2	T-1S35-02-STL-2
-LM	-01	-DH	T-1S6-22-L-2	T-1S35-01-L-2	T-1S35-02-L-2

FOR OTHER PLATING OPTIONS REFER TO T-1S6-XX-XXX-2, AND T-1S35-XX-XXX-2 COMPONENT DRAWINGS



ROW OPTION	PACKAGING TUBE	PLUG
-DH	PT-1-24-01-44	TP-07

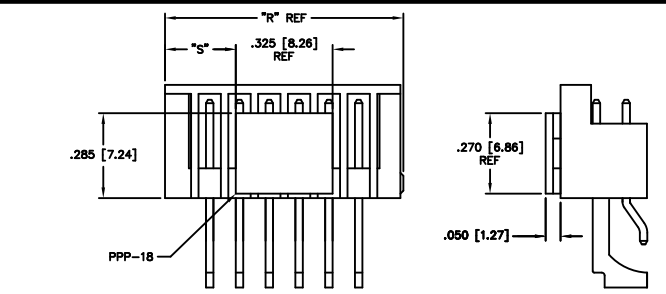


FIG. 3
-P: PICK AND PLACE PAD OPTION (USE PPP-18, 5 POS. MIN)

FOR ODD # POSITION FG
"R" = (No OF POS + 2) x .100 [2.54]
"S" = {("R" - .325 [8.26]) / 2} ±.020 [.51]
FOR EVEN # POSITION FG
"R" = (No OF POS + 1) x .100 [2.54]
"S" = {("R" - .325 [8.26]) / 2} ±.020 [.51]

PROPRIETARY NOTE
THIS DOCUMENT CONTAINS INFORMATION OF A CONFIDENTIAL AND PROPRIETARY NATURE AND SHALL NOT BE REPRODUCED OR TRANSMITTED IN ANY FORM OR BY ANY MEANS, ELECTRONIC OR MECHANICAL, INCLUDING PHOTOCOPYING, RECORDING, OR BY ANY INFORMATION STORAGE AND RETRIEVAL SYSTEM WITHOUT THE WRITTEN CONSENT OF SAMTEC INC.

MISC/VRTG
TSSH-1XX-01-XXX-XX-XX-MKT

520 PARK EAST BLVD, NEW ALBANY, INDIANA 47150
PHONE (812) 944-6733 P.O. BOX 1147
CODE 55322

MADE BY: BURREN 10-10-98
TSSH-1XX-01-XXX-DH-XX
SHEET 1 OF 2