



Chipsmall Limited consists of a professional team with an average of over 10 year of expertise in the distribution of electronic components. Based in Hongkong, we have already established firm and mutual-benefit business relationships with customers from,Europe,America and south Asia,supplying obsolete and hard-to-find components to meet their specific needs.

With the principle of "Quality Parts,Customers Priority,Honest Operation,and Considerate Service",our business mainly focus on the distribution of electronic components. Line cards we deal with include Microchip,ALPS,ROHM,Xilinx,Pulse,ON,Everlight and Freescale. Main products comprise IC,Modules,Potentiometer,IC Socket,Relay,Connector.Our parts cover such applications as commercial,industrial, and automotives areas.

We are looking forward to setting up business relationship with you and hope to provide you with the best service and solution. Let us make a better world for our industry!



Contact us

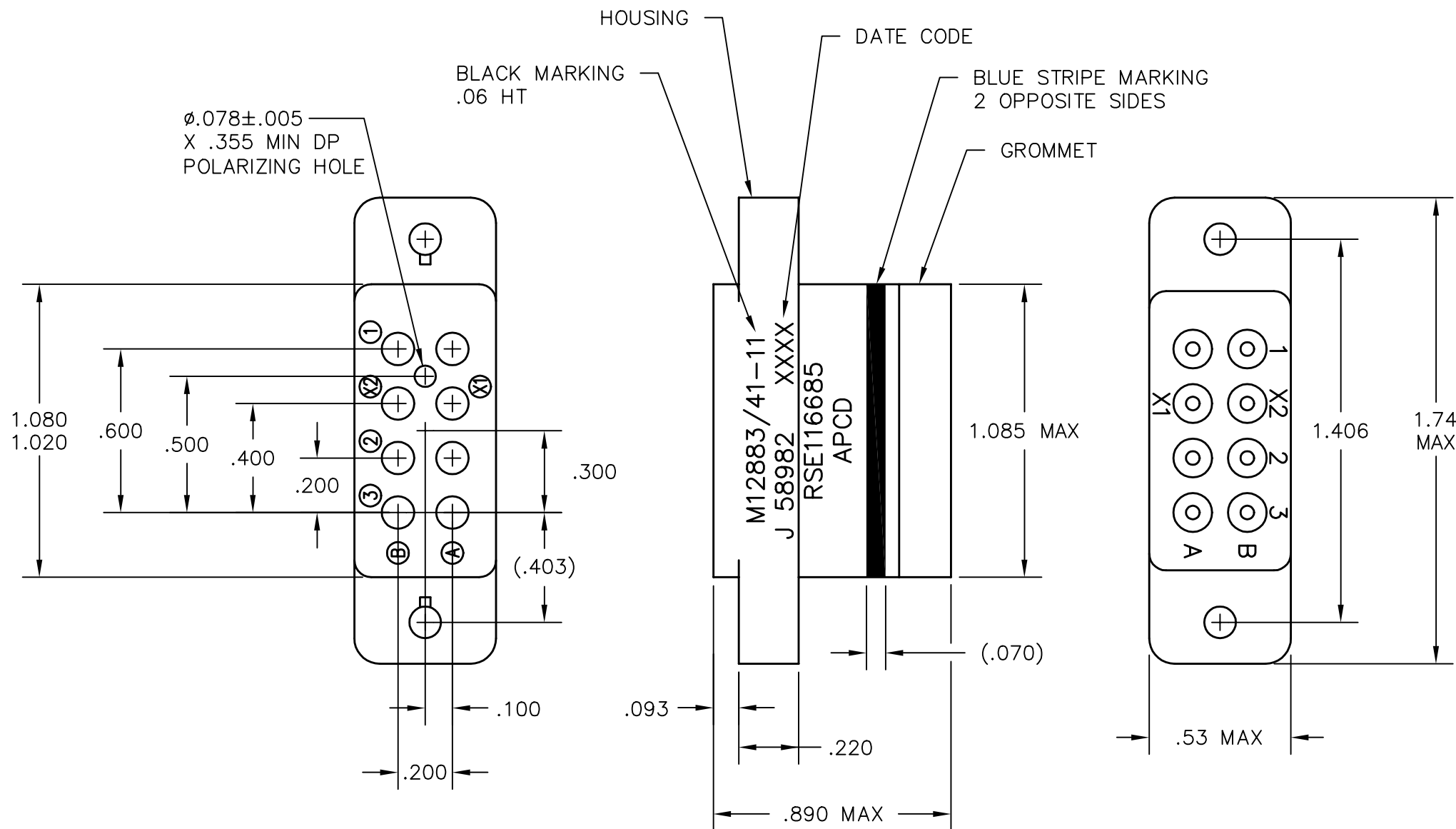
Tel: +86-755-8981 8866 Fax: +86-755-8427 6832

Email & Skype: info@chipsmall.com Web: www.chipsmall.com

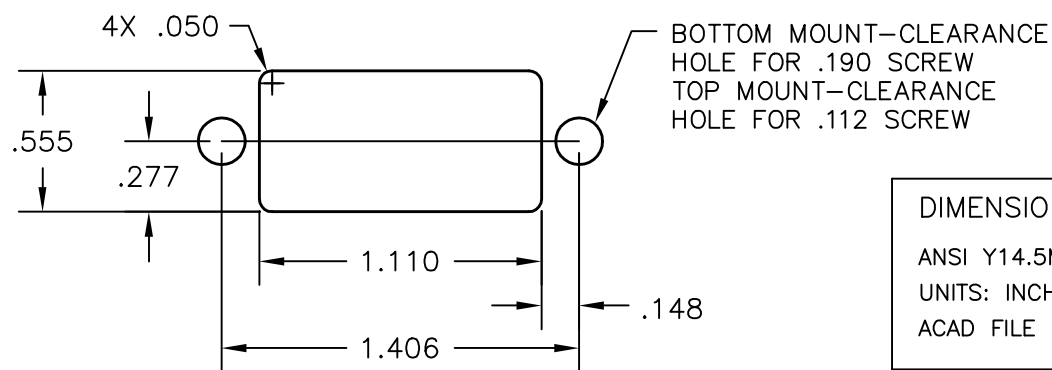
Address: A1208, Overseas Decoration Building, #122 Zhenhua RD., Futian, Shenzhen, China



REV	ECN	APP'D
G	5515	JT 9/14/04



- NOTES:
- PART MEETS REQUIREMENTS PER MIL-PRF-12883.
 - MATERIALS:
 SOCKET BODY: POLYETHERIMIDE PER MIL-P-46184
 GROMMET: SILICONE RUBBER PER ZZ-R-765
 HARDWARE: CRES STEEL AND CADMIUM CHROMATE FINISH.
 CONTACT RETAINERS: BERYLLIUM COPPER
 SOCKET CONTACTS: COPPER ALLOY, HARD GOLD PLATED PER MIL-G-45204
 - OPERATING RANGE:
 TEMPERATURE: -65°C TO 125°C
 INSULATION RESISTANCE: 1000 MEGOHMS MIN.
 DIELECTRIC WITHSTANDING VOLTAGE:
 1500 VRMS AT SEA LEVEL,
 500 VRMS AT 80,000 FT. ALTITUDE
 VIBRATION: MIL-STD-202, METHOD 204,
 TEST CONDITION G
 SHOCK: MIL-STD-202, METHOD 213,
 TEST CONDITION C
 - PART SUPPLIED WITH MOUNTING HARDWARE.
 - PART SUPPLIED WITH CONTACTS PER TABLE BELOW.



RECOMMENDED MOUNTING PANEL CUTOUT

PART NO.	CONTACTS SUPPLIED	MARKING
RSE116684	NONE	RSE116685
RSE116685	8X 16/16 M39029/92-533	

DIMENSIONS ANSI Y14.5M UNITS: INCHES ACAD FILE	TOLERANCES .XX ±.01 .XXX ±.005 ANGLES ±2°	PROJECTION 	Amphenol Pcd SPECIFICATION DRAWING			TITLE RELAY SOCKET 8 POSITION, SIZE 16 M12883/41-11		
			ENGR S. KONDO 9/14/2004	CHKD D. GANDHI 9/14/2004	APPD J. TON 6/14/2004	SIZE B	DWG NO. RSE116684	REV G
ORIGINAL	THIS DOCUMENT CONTAINS PROPRIETARY INFORMATION WHICH IS THE CONFIDENTIAL PROPERTY OF AMPHENOL PCD INC. PEABODY, MA			CODE: 58982	SCALE: 2X	SHEET 1 OF 1		

RSE116684

RSE116684