



Chipsmall Limited consists of a professional team with an average of over 10 year of expertise in the distribution of electronic components. Based in Hongkong, we have already established firm and mutual-benefit business relationships with customers from,Europe,America and south Asia,supplying obsolete and hard-to-find components to meet their specific needs.

With the principle of “Quality Parts,Customers Priority,Honest Operation,and Considerate Service”,our business mainly focus on the distribution of electronic components. Line cards we deal with include Microchip,ALPS,ROHM,Xilinx,Pulse,ON,Everlight and Freescale. Main products comprise IC,Modules,Potentiometer,IC Socket,Relay,Connector.Our parts cover such applications as commercial,industrial, and automotives areas.

We are looking forward to setting up business relationship with you and hope to provide you with the best service and solution. Let us make a better world for our industry!



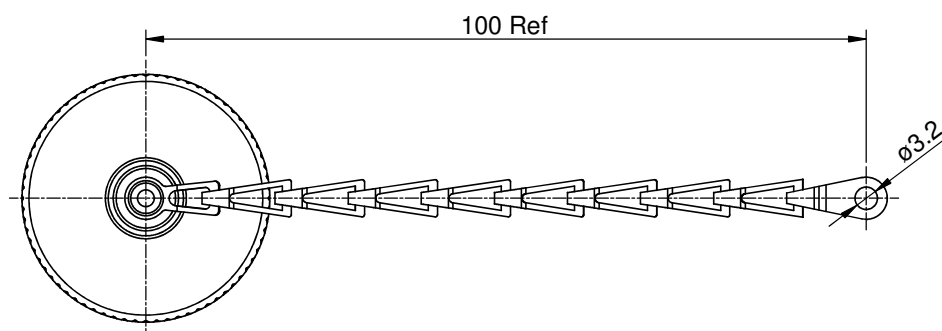
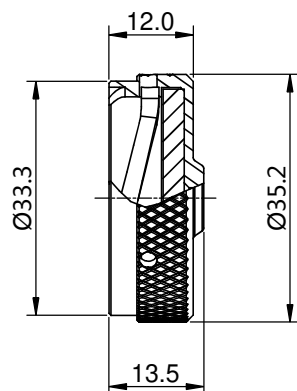
## Contact us

Tel: +86-755-8981 8866 Fax: +86-755-8427 6832

Email & Skype: [info@chipsmall.com](mailto:info@chipsmall.com) Web: [www.chipsmall.com](http://www.chipsmall.com)

Address: A1208, Overseas Decoration Building, #122 Zhenhua RD., Futian, Shenzhen, China





RT018DC X X  
① ②

P/N	①	②	CHAIN	PLATING
RT018DC	---	---	NO CHAIN	NICKEL PLTING
RT018DCA	---	A	NO CHAIN	BLACK ANODIZING
RT018DCG	G	---	CHAIN	NICKEL PLTING
RT018DCGA	G	A	CHAIN	BLACK ANODIZING

# NOTES : (UNLESS OTHERWISE SPECIFIED)

## 1. MATERIAL :

RIVET : COPPER ALLOY,NICKEL PLATING  
CHAIN : STAINLESS STEEL.  
DUST CAP : AL ALLOY , NICKEL PLATED.  
O-RING : NBR.

## 2. SPECIFICATIONS :

2.1 OPERATING TEMPERATURE : -40°C ~ +105°C.  
2.2 IP--CLASS : IP67.  
2.3 MATING CYCLES DURABILITY : 500 CYCLES MIN.  
2.4 ROHS COMPLIANT.

## 3. ALL DIMENSIONS ARE FOR REFERENCE USE ONLY.

SEE PART NUMBER CHART			
QUANTITY	PART NUMBER	DESCRIPTION	ITEM
MATERIALS LIST			
UNLESS OTHERWISE SPECIFIED 1) All dimensions are in metric(mm). 2) Tolerances are as follows: 1 PL DEC ±0.30   Fractions ±1/64 2 PL DEC ±0.15   Angles ±1° 3 PL DEC ±0.08 3) Note reference =		SIGNATURES      DATE DRAWN: BEN      JUN-23-2014 CHECKED: ENGINEER: APPROVAL: CUSTOMER: THIS DRAWING IS SUPPLIED FOR INFORMATION ONLY. DESIGN FEATURES, SPECIFICATIONS AND PERFORMANCE DATA SHOWN HEREON ARE THE PROPERTY OF THE AMPHENOL CORPORATION. NO RIGHTS OF REPRODUCTION ARE IMPLIED. ALL DIMENSIONS ARE SUBJECT TO NORMAL MANUFACTURING VARIATIONS.	
MATERIAL SPECIFICATIONS:		<b>Amphenol</b> Sine Systems - www.amphenol-sine.com 44724 Morley Drive Clinton Township, MI 48036	
PROCESS SPECIFICATIONS:		ECO-MATE,DUSTCAP FOR RECEPTACLES,SIZE 18 SIZE TYPE DWG NO: RT018DCxx REVISION B1 SCALE: NONE SHEET 1 OF 1	
NEXT ASSY:			