



Chipsmall Limited consists of a professional team with an average of over 10 year of expertise in the distribution of electronic components. Based in Hongkong, we have already established firm and mutual-benefit business relationships with customers from,Europe,America and south Asia,supplying obsolete and hard-to-find components to meet their specific needs.

With the principle of “Quality Parts,Customers Priority,Honest Operation,and Considerate Service”,our business mainly focus on the distribution of electronic components. Line cards we deal with include Microchip,ALPS,ROHM,Xilinx,Pulse,ON,Everlight and Freescale. Main products comprise IC,Modules,Potentiometer,IC Socket,Relay,Connector.Our parts cover such applications as commercial,industrial, and automotives areas.

We are looking forward to setting up business relationship with you and hope to provide you with the best service and solution. Let us make a better world for our industry!



Contact us

Tel: +86-755-8981 8866 Fax: +86-755-8427 6832

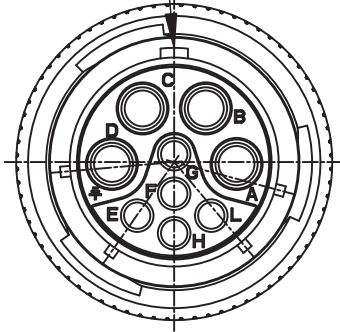
Email & Skype: info@chipsmall.com Web: www.chipsmall.com

Address: A1208, Overseas Decoration Building, #122 Zhenhua RD., Futian, Shenzhen, China

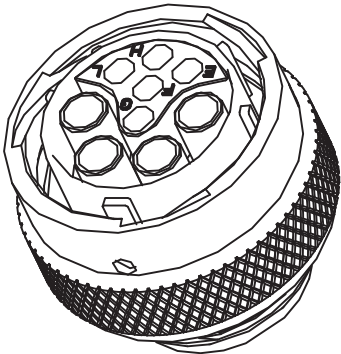
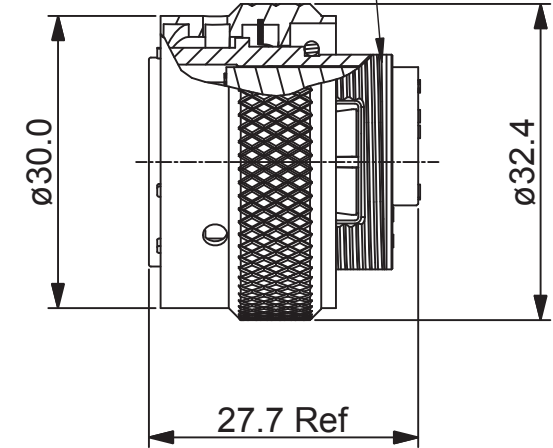


REVISIONS					
REV	ECO	DESCRIPTION	DATE	BY	APPR
B1	-	RELEASED DRAWING	JULY-08-2014	BEN	TOMMY

MASTER KEYWAY



15/16-20 UNEF THREAD



NOTES : (UNLESS OTHERWISE SPECIFIED)

1. MATERIAL :
SHELL : ZINC ALLOY , NICKEL PLATED.
INSERT : THERMOPLASTIC , UL94 V-0.
COUPLING NUT : AL ALLOY , NICKEL PLATED.
WAVE WASHER : STAINLESS STEEL.
O-RING : NBR.
2. SPECIFICATIONS :
2.1 RATED CURRENT :
2.1.1 16#CONTACT 13A(MAX) .
2.1.2 2.5mmCONTACT 23A (MAX) .
2.2 RATED VOLTAGE : 250V (AC/DC) .
2.3 OPERATING TEMPERATURE : -40°C ~ +105°C.
2.4 DIELECTRIC WITHSTANDING VOLTAGE : LESS THAN
2 MILLIAMPS CURRENT LEAKAGE@2000 VOLTS AC.
2.5 INSULATION RESISTANCE : 5000 MEGOHMS MIN.
2.6 IP--CLASS : IP67.
2.7 MATING CYCLES DURABILITY : 500 CYCLES(MIN).
2.8 ROHS COMPLIANT.
3. SUITABLE CONTACTS : 16# & 2.5mm CONTACTS.
4. ALL DIMENSIONS ARE FOR REFERENCE USE ONLY.

KEY POS	PART NUMBER
N	RT061609SNH
W	RT061609SWH
X	RT061609SXH
Y	RT061609SYH
Z	RT061609SZH

	SEE PART NUMBER		
	CHART		
QUANTITY	PART NUMBER	DESCRIPTION	ITEM
MATERIALS LIST			
<div>UNLESS OTHERWISE SPECIFIED</div> <div>1) All dimensions are in metric(mm).</div> <div>2) Tolerances are as follows:</div> <div>1 PL DEC ±0.30</div> <div>2 PL DEC ±0.15</div> <div>3 PL DEC ±0.08</div> <div>3) Note reference = <div><div>x</div></div></div>		<div>SIGNATURES</div> <div>DRAWN: BEN</div> <div>CHECKED:</div> <div>ENGINEER:</div> <div>APPROVAL:</div> <div>CUSTOMER:</div> <div>THIS DRAWING IS SUPPLIED FOR INFORMATION ONLY. DESIGN FEATURES, SPECIFICATIONS AND PERFORMANCE DATA SHOWN HEREON ARE THE PROPERTY OF THE AMPHENOL CORPORATION. NO RIGHTS OF REPRODUCTION ARE IMPLIED. ALL DIMENSIONS ARE SUBJECT TO NORMAL MANUFACTURING VARIATIONS.</div>	<div>DATE</div> <div>JULY-08-2014</div> <div>Amphenol</div> <div>Sine Systems - www.amphenol-sine.com</div> <div>44724 Morley Drive</div> <div>Clinton Township, MI 48036</div>
<div>MATERIAL SPECIFICATIONS:</div>		<div>ECO-MATE,PLUG,</div> <div>SIZE 16,9POS,SOCKET.</div>	
<div>PROCESS SPECIFICATIONS:</div>		<div>SIZE</div> <div>B</div>	<div>TYPE</div> <div>C-</div>
<div>NEXT ASS'Y:</div>		<div>DWG NO:</div> <div>RT061609S*H</div>	<div>REVISION</div> <div>B1</div>
		<div>SCALE:</div> <div>NONE</div>	<div>SHEET</div> <div>1</div> <div>OF</div> <div>1</div>

TITLE:	ECO-MATE,PLUG,SIZE 16,9POS,SOCKET.
DWG NO:	RT061609S*H
REV:	B1
SH:	1
OF:	1