



Chipsmall Limited consists of a professional team with an average of over 10 year of expertise in the distribution of electronic components. Based in Hongkong, we have already established firm and mutual-benefit business relationships with customers from,Europe,America and south Asia,supplying obsolete and hard-to-find components to meet their specific needs.

With the principle of "Quality Parts,Customers Priority,Honest Operation,and Considerate Service",our business mainly focus on the distribution of electronic components. Line cards we deal with include Microchip,ALPS,ROHM,Xilinx,Pulse,ON,Everlight and Freescale. Main products comprise IC,Modules,Potentiometer,IC Socket,Relay,Connector.Our parts cover such applications as commercial,industrial, and automotives areas.

We are looking forward to setting up business relationship with you and hope to provide you with the best service and solution. Let us make a better world for our industry!



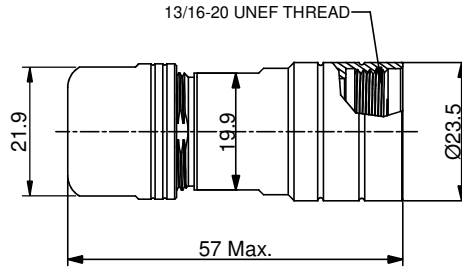
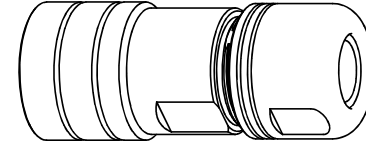
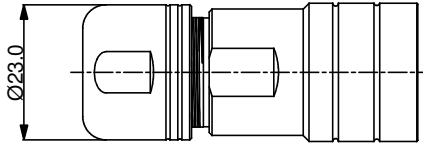
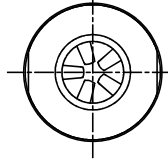
## Contact us

Tel: +86-755-8981 8866 Fax: +86-755-8427 6832

Email & Skype: info@chipsmall.com Web: www.chipsmall.com

Address: A1208, Overseas Decoration Building, #122 Zhenhua RD., Futian, Shenzhen, China





REVISIONS					
REV	ECO	DESCRIPTION	DATE	BY	APPR
B1	-	RELEASED DRAWING	JAN-18-2014	ARROW	TOMMY

P/N	SHIELDING RING	CABLE RANGE
RT0L-14CG-C1	WITHOUT	Ø6-Ø10.5mm
RT0L-14CG-C2	WITHOUT	Ø8.5-Ø12.5mm
RT0L-14CG-S1	WITH	Ø6-Ø10.5mm
RT0L-14CG-S2	WITH	Ø8.5-Ø12.5mm

**NOTES : (UNLESS OTHERWISE SPECIFIED)**

**1. MATERIAL :**

- 1.1. NUT : ZINC ALLOY, NICKEL PLATED.
- 1.2. CLAMP INSERT : THERMOPLASTIC UL94 V-0.
- 1.3. EMI SHIELDING RING : STAINLESS STEEL.
- 1.4. BACK SHELL : ZINC ALLOY, NICKEL PLATED.
- 1.5. O-RING: SILICONE RUBBER.
- 1.6. GROMMET : RUBBER.

**2. ROHS COMPLIANT.**

**3. ALL DIMENSIONS ARE FOR REFERENCE USE ONLY.**

QUANTITY	PART NUMBER	DESCRIPTION	ITEM
<b>MATERIALS LIST</b>			
<small>UNLESS OTHERWISE SPECIFIED</small> 1) All dimensions are in metric(mm). 2) Tolerances are as follows: 1 PL DEC ±0.30 Fractions ±1/64 2 PL DEC ±0.15 Angles ±1° 3 PL DEC ±0.08 3) Note reference =		SIGNATURES DRAWN: ARROW CHECKED: ENGINEER: APPROVAL:	DATE JAN-17-2014
MATERIAL SPECIFICATIONS: CUSTOMER:		<b>Amphenol</b> Sine Systems - www.amphenol-sine.com 44724 Morley Drive Clinton Township, MI 48036	
PROCESS SPECIFICATIONS: NEXT ASSY:		<b>ECO-MATE, CORD GRIP SIZE 14</b>	
		THIS DRAWING IS SUPPLIED FOR INFORMATION ONLY. DESIGN FEATURES, SPECIFICATIONS AND PERFORMANCE DATA SHOWN HEREON ARE THE PROPERTY OF THE AMPHENOL CORPORATION. NO RIGHTS OF REPRODUCTION ARE IMPLIED. ALL DIMENSIONS ARE SUBJECT TO NORMAL MANUFACTURING VARIATIONS.	SIZE: B C- TYPE: NONE DWG NO.: RT0L-14CG-xx REVISION: B1
		SHEET 1 OF 1	

TITLE: ECO-MATE, CORD GRIP, SIZE 14  
 DWG NO.: RT0L-14CG-xx  
 REV: B1  
 SH: 1  
 OF: 1