



Chipsmall Limited consists of a professional team with an average of over 10 year of expertise in the distribution of electronic components. Based in Hongkong, we have already established firm and mutual-benefit business relationships with customers from,Europe,America and south Asia,supplying obsolete and hard-to-find components to meet their specific needs.

With the principle of "Quality Parts,Customers Priority,Honest Operation,and Considerate Service",our business mainly focus on the distribution of electronic components. Line cards we deal with include Microchip,ALPS,ROHM,Xilinx,Pulse,ON,Everlight and Freescale. Main products comprise IC,Modules,Potentiometer,IC Socket,Relay,Connector.Our parts cover such applications as commercial,industrial, and automotives areas.

We are looking forward to setting up business relationship with you and hope to provide you with the best service and solution. Let us make a better world for our industry!



## Contact us

Tel: +86-755-8981 8866 Fax: +86-755-8427 6832

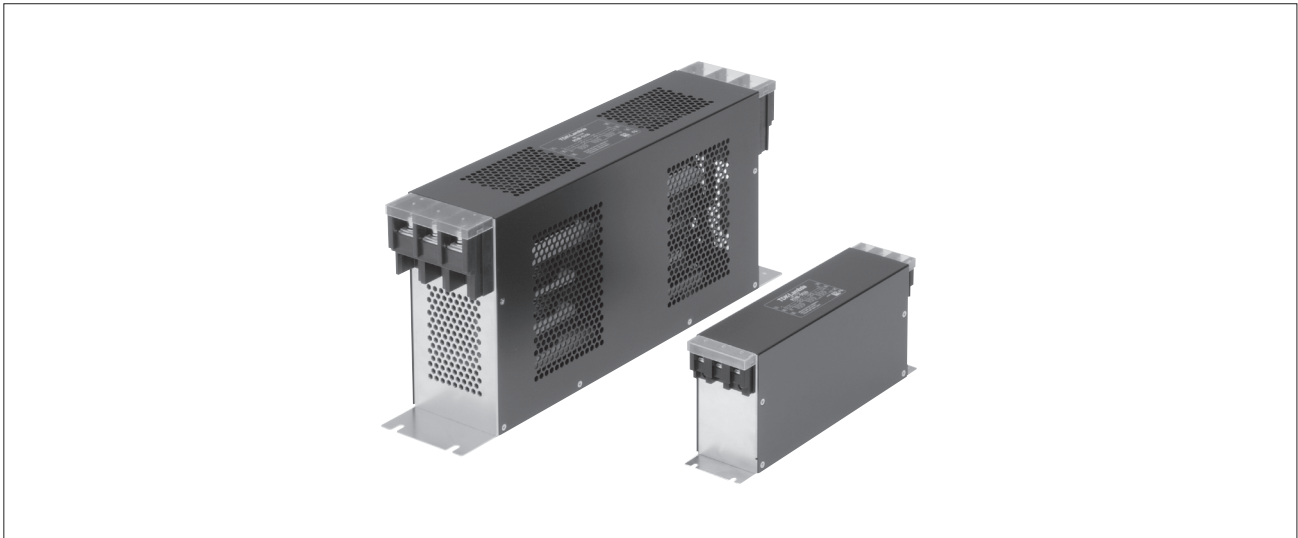
Email & Skype: info@chipsmall.com Web: www.chipsmall.com

Address: A1208, Overseas Decoration Building, #122 Zhenhua RD., Futian, Shenzhen, China



## RTHB SERIES

### High Attenuation Three-Phase Filter with Many Current Variations (Rectangular Type)



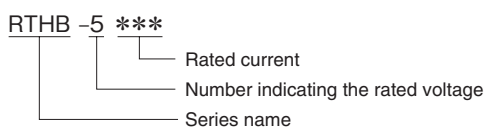
#### FEATURES

- 6 to 150A wide range lineup.
- Rectangular shape with L2 high attention.
- Thin.
- Self-tightening screws and an open/close type cover make wiring work easier.
- Terminal block cover included for safety.
- Compliant with RoHS directives.

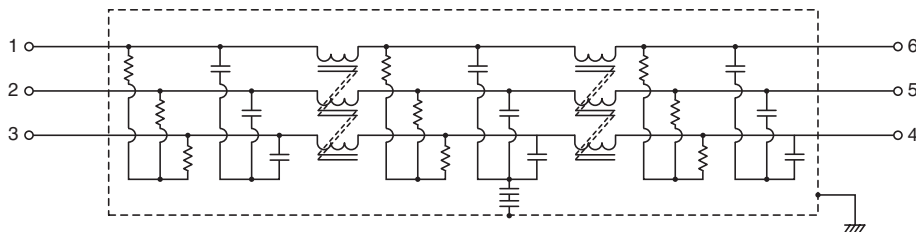
#### SAFETY STANDARDS

UL1283                      File No. E62388  
 EN60939                    Licence Ref. No. SE/07115-4

#### PRODUCT IDENTIFICATION



#### CIRCUIT DIAGRAM



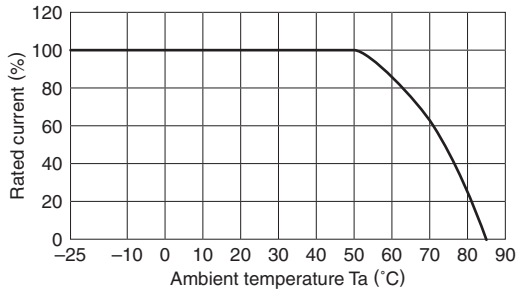
• Conformity to RoHS Directive: This means that, in conformity with EU Directive 2002/95/EC, lead, cadmium, mercury, hexavalent chromium, and specific bromine-based flame retardants, PBB and PBDE, have not been used, except for exempted applications.

• All specifications are subject to change without notice.

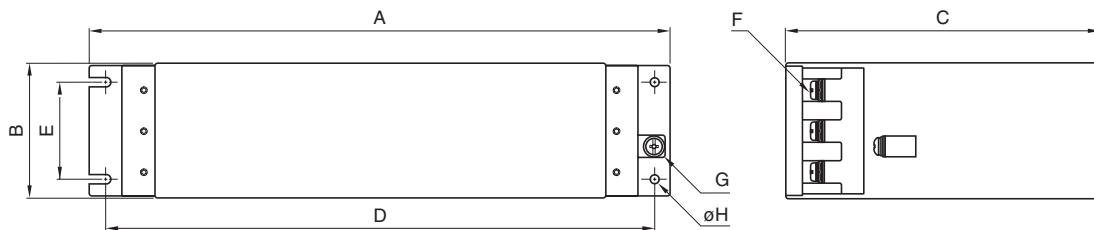
## ELECTRICAL CHARACTERISTICS

Part No.	Rated voltage (AC/DC)	Rated current (AC/DC)	Withstand voltage	Insulation resistance	Leakage current	Operating temperature range	With derating over	DC resistance (mΩ)	Attenuation frequency range (MHz)		Weight (kg)
									Common mode	Differential mode	
									at 25dB	at 25dB	
RTHB-5006	500V	6A	AC.2500V 60s [Between line to ground]	100MΩ min. [DC.500V/ 1min]	2.5mA max. [250V/60Hz] 5mA max. [500V/60Hz]	-25 to +85°C	50°C	290 max.	0.1 to 30	0.1 to 30	0.75
RTHB-5010		10A						120 max.	0.1 to 20	0.2 to 30	0.78
RTHB-5020		20A						50 max.	0.1 to 20	0.2 to 30	1.10
RTHB-5030		30A						26 max.	0.2 to 20	0.2 to 30	1.10
RTHB-5040		40A						20 max.	0.2 to 20	0.1 to 30	2.24
RTHB-5050		50A						14 max.	0.2 to 20	0.2 to 30	2.24
RTHB-5060		60A						10 max.	0.2 to 20	0.2 to 10	2.24
RTHB-5080		80A						10 max.	0.1 to 10	0.2 to 30	7.70
RTHB-5100		100A						8 max.	0.1 to 10	0.2 to 30	8.20
RTHB-5150		150A						6 max.	0.1 to 10	0.2 to 30	12.50

## DERATINGS



## SHAPES AND DIMENSIONS

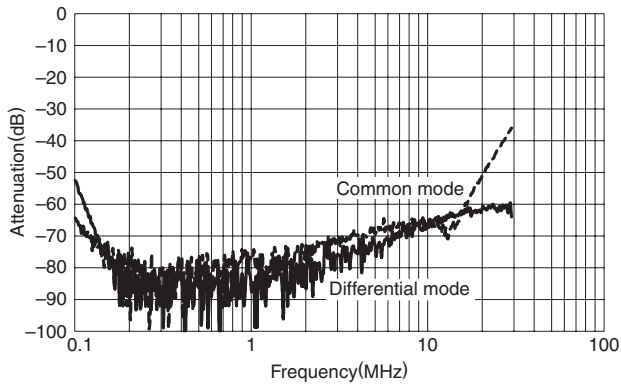


Dimensions in mm

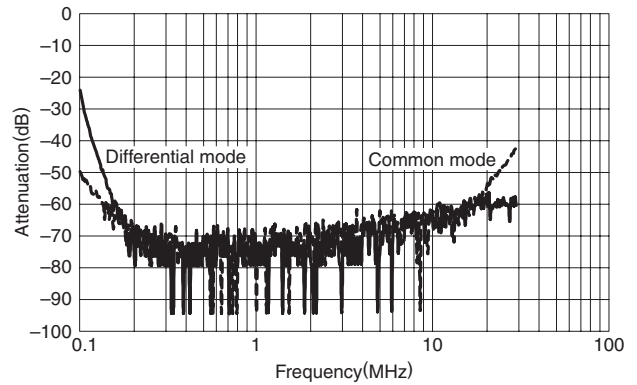
Part No.	A	B	C	D	E	F	G	φH	Recommended clamping torque
RTHB-5006	210	64	100	200	40	M4	M4	4.5	M4 : 1.27N · m M5 : 2.5N · m M6 : 4.8N · m M8 : 7.64N · m
RTHB-5010									
RTHB-5020	240	64	115	230	40	M4	M4	4.5	
RTHB-5030									
RTHB-5040									
RTHB-5050	300	80	140	285	46	M5	M4	5.5	
RTHB-5060									
RTHB-5080									
RTHB-5100	472	100	205	452	63	M8	M6	6.5	
RTHB-5150									
RTHB-5150	534	100	234	514	63	M8	M6	6.5	

■ ATTENUATION vs. FREQUENCY CHARACTERISTICS

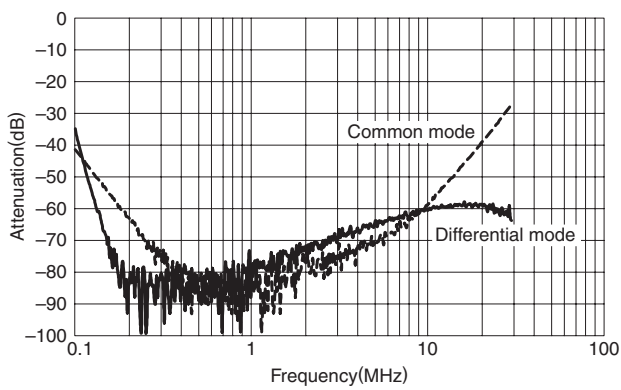
RTHB-5006



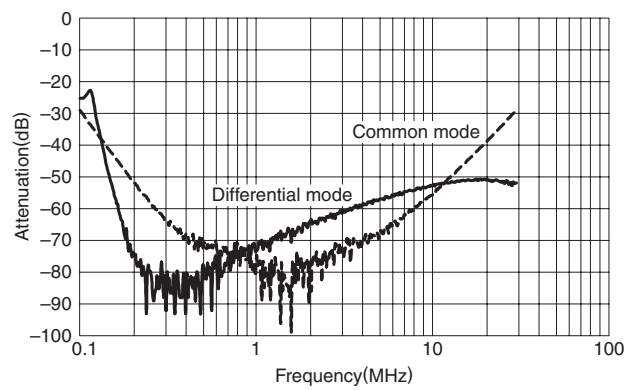
RTHB-5010



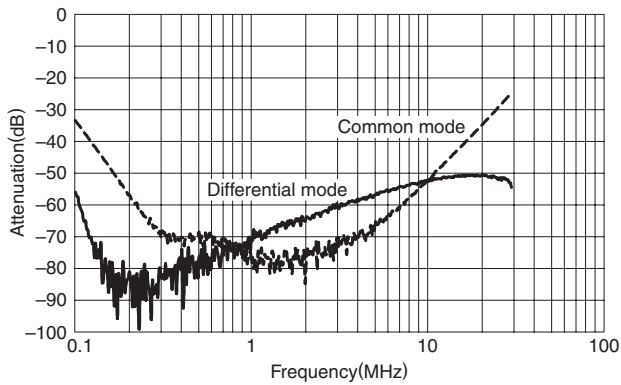
RTHB-5020



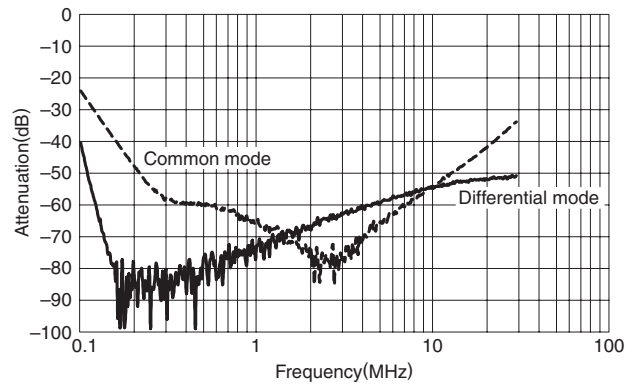
RTHB-5030



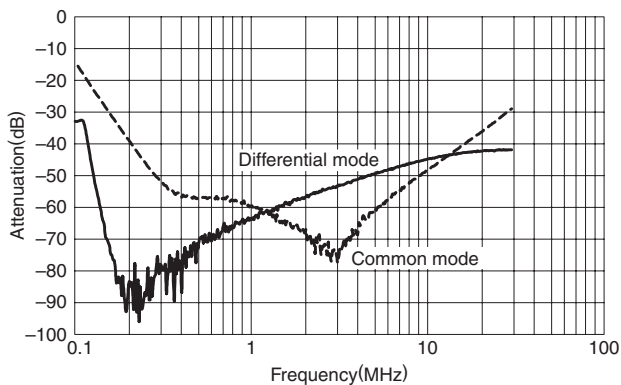
RTHB-5040



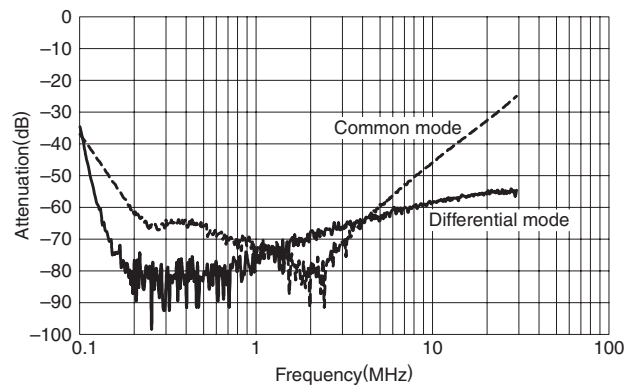
RTHB-5050



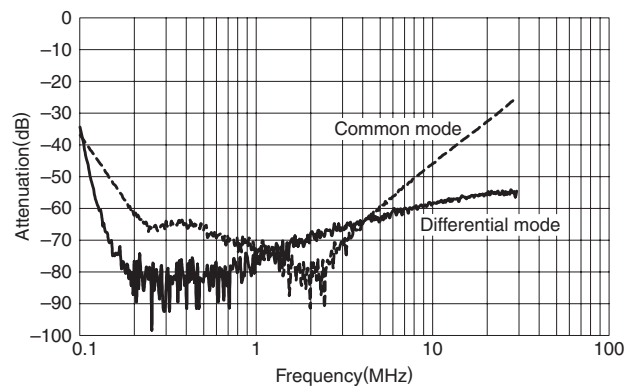
RTHB-5060



RTHB-5080



RTHB-5100



RTHB-5150

