



Chipsmall Limited consists of a professional team with an average of over 10 year of expertise in the distribution of electronic components. Based in Hongkong, we have already established firm and mutual-benefit business relationships with customers from,Europe,America and south Asia,supplying obsolete and hard-to-find components to meet their specific needs.

With the principle of “Quality Parts,Customers Priority,Honest Operation,and Considerate Service”,our business mainly focus on the distribution of electronic components. Line cards we deal with include Microchip,ALPS,ROHM,Xilinx,Pulse,ON,Everlight and Freescale. Main products comprise IC,Modules,Potentiometer,IC Socket,Relay,Connector.Our parts cover such applications as commercial,industrial, and automotives areas.

We are looking forward to setting up business relationship with you and hope to provide you with the best service and solution. Let us make a better world for our industry!



Contact us

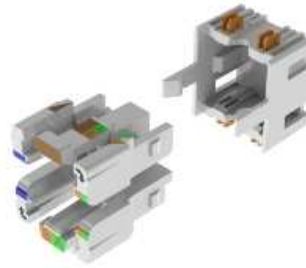
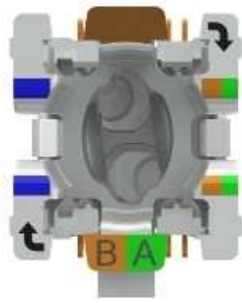
Tel: +86-755-8981 8866 Fax: +86-755-8427 6832

Email & Skype: info@chipsmall.com Web: www.chipsmall.com

Address: A1208, Overseas Decoration Building, #122 Zhenhua RD., Futian, Shenzhen, China

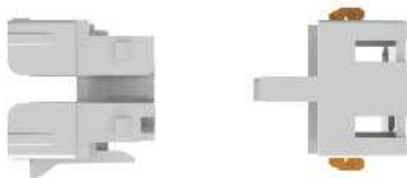


RVUCOEW-B50 Connectors - REVConnect Cores 50 Pack



For more Information
please call

1-800-Belden1



General Description:

REVConnect Core Pack, Bulk Pack of 50

Usage (Overall)

Suitable Applications: Terminate REVConnect Jacks and Plugs

Physical Characteristics (Overall)

AWG of Cable: 23 to 24, Solid and Stranded Conductors, UTP and Screened Cables

Body Attachment Method: Compression

Contact Attachment Method: Insulation Piercing

Contact Plating: Gold over Nickel

Tool Requirements: REVConnect Termination Tool (p/n RVUTT01)

Notes (Overall)

Notes: PACKAGING : Bulk 50x core cable managers and caps packaged in a resealable plastic bags WEIGHT : 0.18 lbs

Connectors

Connector Materials: PBT UL94V-0

Connector Interface: RevConnect UTP and Shielded, CAT5E, CAT6+, 10GX

Current Rating: 1.5 Amps per conductor @ 25°C

Storage Temperature Range: -40°C To +70°C

Installation Temperature Range: -10°C To +60°C

Operating Temperature Range: -10°C To +60°C

Suitable Cable Jacket Diameter Range: 0.370 in.

Connector Specification Ranges:

Conductor	Min. (in.)	Max. (in.)
Insulation O.D.	0.035	0.055

Notes: Insulation O.D. Range = 0.90 to 1.40 mm, Cable Jacket O.D. Max = 9.3 mm

Put Ups and Colors:

Item #	Putup	Ship Weight	Color	Notes	Item Desc
RVUCOEW-B50	50 EA	9.500 LB		Q	REVConn Core Pack,
RVUCOEW-R	50 EA	9.500 LB		Q	REVConn Core Pack,

RVUCOEW-B50 Connectors - REVConnect Cores 50 Pack

Notes:

Q = STANDARD PACKAGES CANNOT BE BROKEN.

Revision Number: 0 Revision Date: 09-12-2016

© 2017 Belden, Inc.
All Rights Reserved.

Although Belden makes every reasonable effort to ensure their accuracy at the time of this publication, information and specifications described herein are subject to error or omission and to change without notice, and the listing of such information and specifications does not ensure product availability. Belden provides the information and specifications herein on an "AS IS" basis, with no representations or warranties, whether express, statutory or implied. In no event will Belden be liable for any damages (including consequential, indirect, incidental, special, punitive, or exemplary damages) whatsoever, even if Belden has been advised of the possibility of such damages, whether in an action under contract, negligence or any other theory, arising out of or in connection with the use, or inability to use, the information or specifications described herein. All sales of Belden products are subject to Belden's standard terms and conditions of sale.