



Chipsmall Limited consists of a professional team with an average of over 10 year of expertise in the distribution of electronic components. Based in Hongkong, we have already established firm and mutual-benefit business relationships with customers from,Europe,America and south Asia,supplying obsolete and hard-to-find components to meet their specific needs.

With the principle of "Quality Parts,Customers Priority,Honest Operation,and Considerate Service",our business mainly focus on the distribution of electronic components. Line cards we deal with include Microchip,ALPS,ROHM,Xilinx,Pulse,ON,Everlight and Freescale. Main products comprise IC,Modules,Potentiometer,IC Socket,Relay,Connector.Our parts cover such applications as commercial,industrial, and automotives areas.

We are looking forward to setting up business relationship with you and hope to provide you with the best service and solution. Let us make a better world for our industry!



## Contact us

Tel: +86-755-8981 8866 Fax: +86-755-8427 6832

Email & Skype: info@chipsmall.com Web: www.chipsmall.com

Address: A1208, Overseas Decoration Building, #122 Zhenhua RD., Futian, Shenzhen, China



## 50-600W Single Output General Purpose Power Supplies

### Features

- ◆ Low Cost
- ◆ Wide Range AC Input 85 - 265VAC (300VAC for 5s)
- ◆ UL508 Certification on Select Models
- ◆ Enclosed Construction
- ◆ Compact Size
- ◆ 7 Year Warranty



### Key Market Segments & Applications



Specifications		RWS50B	RWS100B	RWS150B	RWS300B	RWS600B
AC Input Voltage range (1)	VAC	85 - 265VAC (47 - 63Hz), 300VAC for 5 seconds				
DC Input Voltage range	VDC	120 - 370VDC (330VDC for RWS600B)*				
Inrush Current (100 / 200VAC)	A	18 / 36	15 / 30	16 / 32	17 / 34	20 / 40
Power Factor (100 / 200VAC)	-	Meets EN61000-3-2 (0.95 / 0.9)				
Input Current (115/230VAC) (Typ)	A	1.0 / 0.65	1.2 / 0.6 (5V: 0.9/0.45)	1.8 / 0.9 (5V: 1.3/0.7)	3.6 / 1.9 (5V: 3.1/1.6)	6.6 / 3.6 (5V: 6.2/3.2)
Temperature Coefficient	-	<0.02%/°C				
Regulation	-	See sheet 2				
Overcurrent Protection	-	>105%, Constant Current Style				
Overvoltage Protection	V	115-140%, Cycle AC line to reset				
Hold Up Time (Typ at 100% load)	ms	20ms (RWS50B: 15ms at 100VAC input)				
Leakage Current (max)	uA	750uA maximum, typically 175uA at 115VAC, 63Hz				
Remote Sense	-	No				
Operating Temperature	-	-10 to +70°C, derate linearly to 20% load from 50 to 70°C (100-150W from 40 to 70°C) (3)				
Storage Temperature	-	-30 to +75°C				
Operating Humidity (non condensing)	%RH	30 - 90%RH				
Storage Humidity (non condensing)	%RH	10 - 90%RH				
Cooling	-	Convection		Internal Fan		
Withstand Voltage	-	Input to Ground 2kVAC, Input to Output 3kVAC, Output to Ground 500VAC for 1 min.				
Isolation Resistance	-	>100M at 25°C & 70%RH, Output to Ground 500VDC				
Vibration (non operating)	-	10 - 55Hz: 19.6m/s <sup>2</sup> (sweep 1 min) X, Y, Z for 1 hour				
Shock	-	< 196.1 m/s <sup>2</sup>				
Safety Agency Approvals (2)	-	UL / CSA(cUL) / IEC 60950-1 (2nd Ed), UL:508, CSA C22.2 No.107.1-01, CE Mark (Additionally evaluated to EN 60950-1)				
Conducted & Radiated EMI	-	EN55011 / EN55022-B, FCC Class B, VCCI-B				
Immunity	-	IEC61000-4-2, -3, -4, -5, -6, -8, -11, IEC61000-6-2				
Weight (Typ)	g	230	400	480	900	1600
Size (WxHxD)	mm	82 x 34 x 81.5	94 x 39 x 108	94 x 41 x 128	102 x 41 x 170	120 x 61 x 190
	In	3.23 x 1.34 x 3.2	3.7 x 1.54 x 4.25	3.7 x 1.61 x 5.04	4.02 x 1.61 x 6.7	4.72 x 2.4 x 7.48
MTBF - Telcordia SR-332 issue 3**	Hours	4,170,949	1,978,533	2,235,743	2,027,824	2,157,340
Warranty	Yrs	Seven Years				

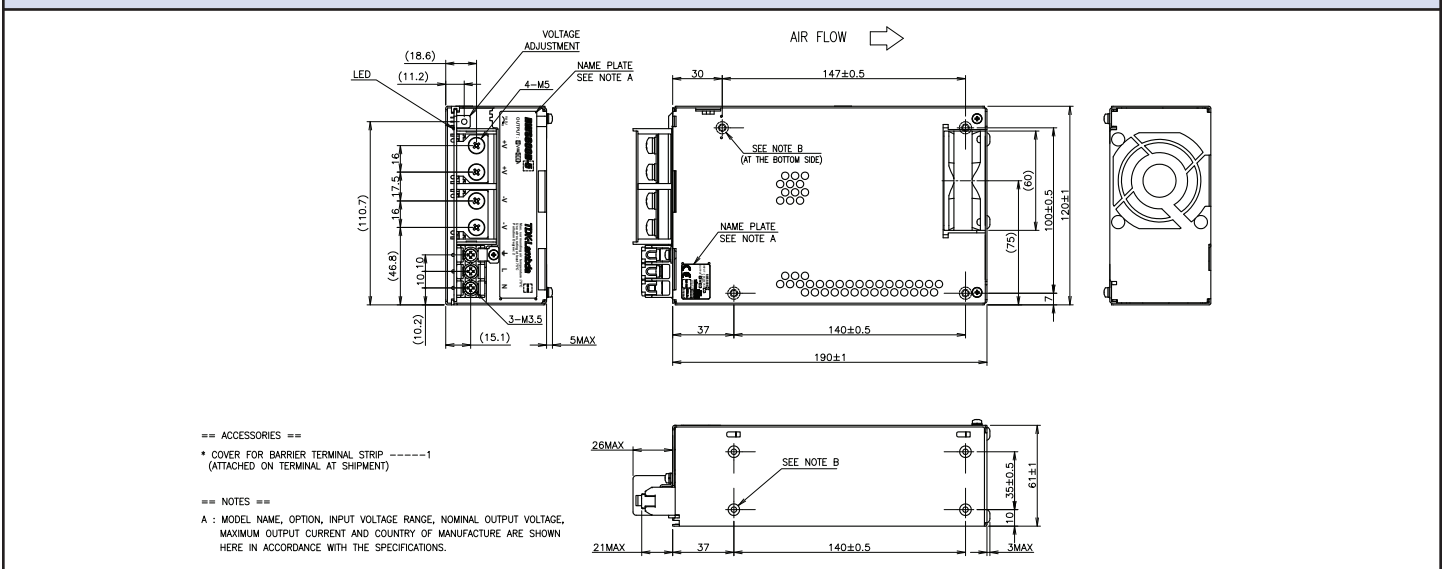
\*Safety certified for AC input only    \*\* 24V output model, 25°C ambient, full load, 230VAC input

- Notes: (1) See Instruction Manual for derating below 115VAC input  
 (2) UL508 & CSA C22.2 No.107.1-01 on RWS50B-5, -12, -24, RWS100B-5, -12, -24, RWS150B-5, -12, -24, RWS300B-24 and RWS600B-24 only  
 (3) RWS600B operates down to -20°C

## Output Ratings

Model	Voltage	Adjust Range (V)	Max Current (A)	Max Output Power	Load Reg (mV)	Line Reg (mV)	Ripple Noise (mV)	Efficiency (typ) % 115/230VAC
RWS50B-5	5V	4.5-5.75V	10	50	40	20	120	78 / 79
RWS100B-5	5V	4.5-5.75V	14	70	40	20	120	77.5 / 79
RWS150B-5	5V	4.5-5.75V	21	105	40	20	120	77.5 / 79.5
RWS300B-5	5V	4.5-5.75V	50	250	40	20	120	75 / 78.5
RWS600B-5	5V	4.5-5.75V	100	500	70	20	120	74 / 77.5
RWS50B-12	12V	10.8-13.8V	4.3	51.6	96	48	150	83 / 84
RWS100B-12	12V	10.8-13.8V	8.5	102	96	48	150	83 / 84
RWS150B-12	12V	10.8-13.8V	13	156	96	48	150	84.5 / 87.5
RWS300B-12	12V	10.8-13.8V	25	300	96	48	150	79.5 / 82.5
RWS600B-12	12V	10.8-13.8V	50	600	96	48	150	82 / 84.5
RWS100B-15	15V	13.5-17.25V	6.8	102	120	60	150	84 / 85
RWS150B-15	15V	13.5-17.25V	10	150	120	60	150	84.5 / 87.5
RWS300B-15	15V	13.5-17.2V	20	300	120	60	150	81.5 / 84.5
RWS600B-15	15V	13.5-17.2V	40	600	120	60	150	82 / 84.5
RWS50B-24	24V	21.6-27.6V	2.2	52.8	192	96	150	86 / 87
RWS100B-24	24V	21.6-27.6V	4.5	108	192	96	150	86 / 87.5
RWS150B-24	24V	21.6-27.6V	6.5	156	192	96	150	86.5 / 89.5
RWS300B-24	24V	21.6-27.6V	12.5	300	192	96	150	85 / 88
RWS600B-24	24V	21.6-27.6V	25	600	192	96	150	85 / 88.5
RWS150B-28	28V	25.2-32.2V	5.4	151.2	224	112	180	86.5 / 89.5
RWS300B-36	36V	32.4-41.4	8.4	302.4	288	144	200	85 / 88
RWS600B-36	36V	32.4-41.4	16.7	601.2	288	144	200	84 / 88.5
RWS50B-48	48V	43.2-52.8	1.1	52.8	384	192	200	87 / 88
RWS100B-48	48V	43.2-52.8	2.1	100.8	384	192	200	86 / 87
RWS150B-48	48V	43.2-52.8	3.3	158.4	384	192	200	86.5 / 89.5
RWS300B-48	48V	43.2-52.8	6.3	302.4	384	192	200	85 / 88
RWS600B-48	48V	43.2-52.8	12.5	600	384	192	200	85 / 88/5

## Outline Drawing (RWS600B)



## Options

Suffix	Description
/CO2	Double Sided Board Coating
/R	Remote On/Off (RWS300B only)
/RFO	Remote On/Off, Remote Sense, Parallel Operation, DC Good Signal (RWS600B only)

## Other TDK-Lambda Industrial Products

HWS	15W to 1500W Single output
LS	25W to 200W Single output low cost
SWS-L	600W to 1000W Single output, full featured

For Additional Information, please visit  
[us.tdk-lambda.com/lp/products/rwsb-series.htm](http://us.tdk-lambda.com/lp/products/rwsb-series.htm)

