



Chipsmall Limited consists of a professional team with an average of over 10 year of expertise in the distribution of electronic components. Based in Hongkong, we have already established firm and mutual-benefit business relationships with customers from,Europe,America and south Asia,supplying obsolete and hard-to-find components to meet their specific needs.

With the principle of “Quality Parts,Customers Priority,Honest Operation,and Considerate Service”,our business mainly focus on the distribution of electronic components. Line cards we deal with include Microchip,ALPS,ROHM,Xilinx,Pulse,ON,Everlight and Freescale. Main products comprise IC,Modules,Potentiometer,IC Socket,Relay,Connector.Our parts cover such applications as commercial,industrial, and automotives areas.

We are looking forward to setting up business relationship with you and hope to provide you with the best service and solution. Let us make a better world for our industry!



Contact us

Tel: +86-755-8981 8866 Fax: +86-755-8427 6832

Email & Skype: info@chipsmall.com Web: www.chipsmall.com

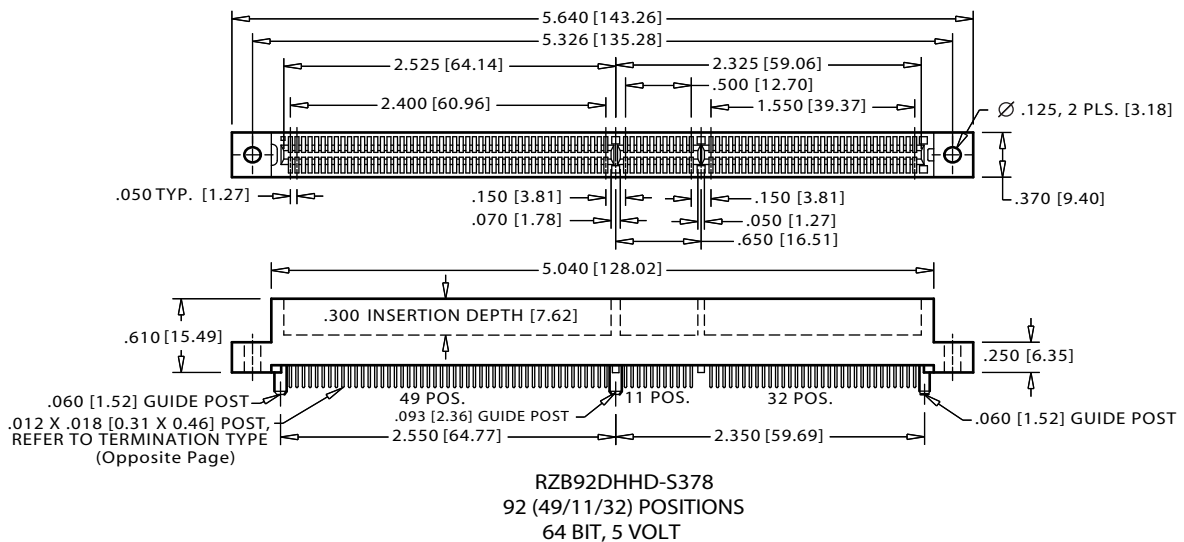
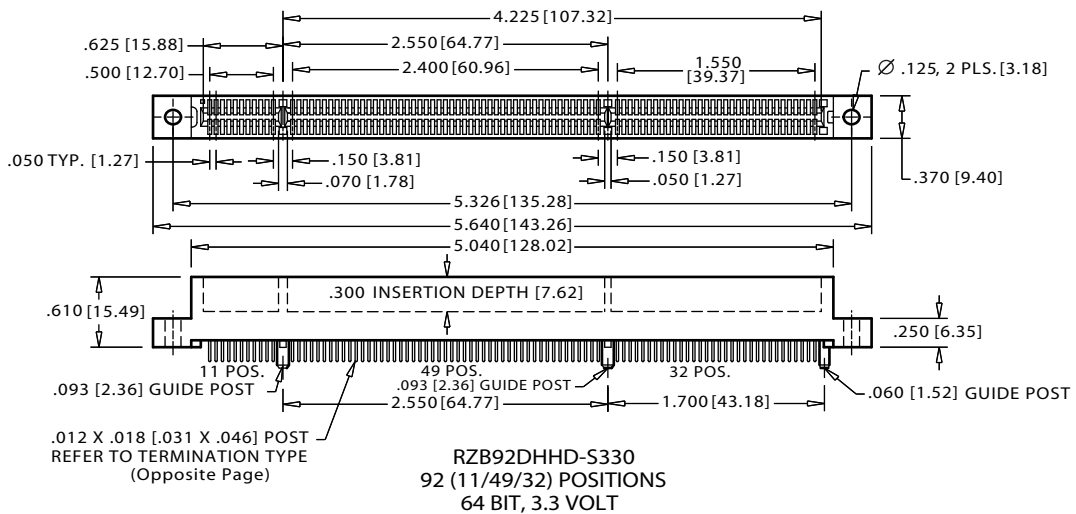
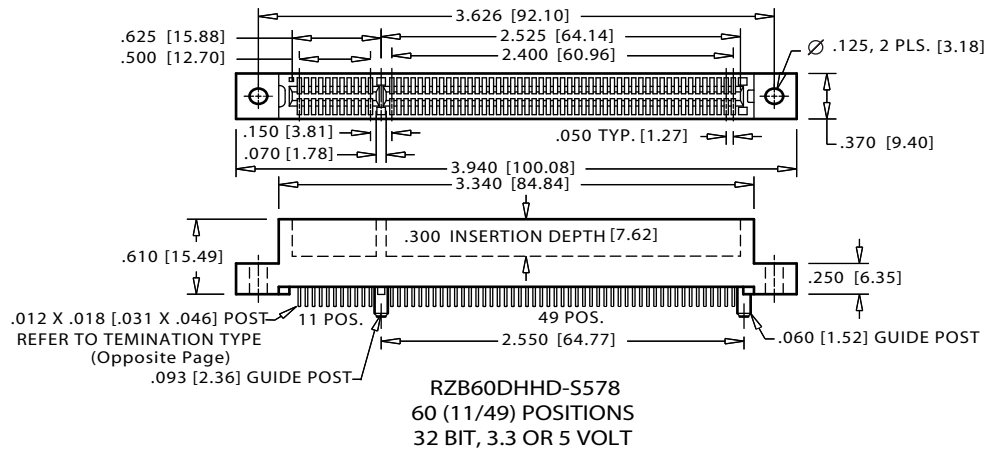
Address: A1208, Overseas Decoration Building, #122 Zhenhua RD., Futian, Shenzhen, China



.050" [1.27mm] CONTACT CENTERS [PCI]

DIMENSIONS

Dimensions in [] are in millimeters, all others in inches



.050" [1.27mm] CONTACT CENTERS [PCI]

PART NUMBER CODING

R Z B 60 D HH D -S578

MATERIALS (Insulator/Contact)

R = PPS/Phosphor Bronze
 A = PPS/Beryllium Copper
 L = PCT/Phosphor Bronze
 M = PCT/Beryllium Copper
 Consult Factory for Other Materials

CONTACT FINISH

Contact Surface	Termination	Underplate
Z = .000010" Gold	.000100" Tin	.000050" Nickel
X = .000030" Gold	.000100" Tin	.000050" Nickel

CONTACT CENTERS

B = .050" [1.27 mm]

NUMBER OF CONTACT POSITIONS

60 = 11/49 (32 Bit, 3.3 or 5 Volt)
 92 = 11/49/32 (64 Bit, 3.3 Volt)
 or 92 = 49/11/32 (64 Bit, 5 Volt)

READOUT

D = Dual

MODIFICATIONS

PCI WITH GUIDE POSTS:

-S330 = 92 (11/49/32) Positions (64 Bit, 3.3 Volt)
 -S378 = 92 (49/11/32) Positions (64 Bit, 5 Volt)
 -S578 = 60 (11/49) Positions (32 Bit, 3.3 or 5 Volt)

PCI WITHOUT GUIDE POSTS:

-S329 = 92 (11/49/32) Positions (64 Bit, 3.3 Volt)
 -S250 = 92 (49/11/32) Positions (64 Bit, 5 Volt)
 -S621 = 60 (11/49) Positions (32 Bit, 3.3 or 5 Volt)

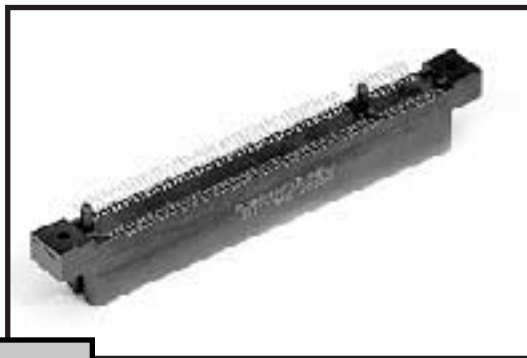
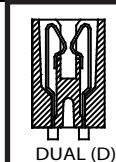
MOUNTING STYLE

D = Flush Mounting
 N = No Mounting
 T = Flush Mounting With Threaded Insert
 Q = Straddle Mount
 R = Metal Boardlocks

TERMINATION TYPE

HH = Staggered Dip Solder
 HR = Card Extender
 HF = Surface Mount
 HL = .250" [6.35mm] x .160" [4.06mm] Dip Solder

READOUT

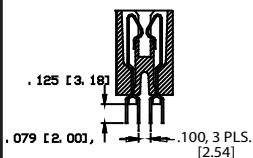


FEATURES

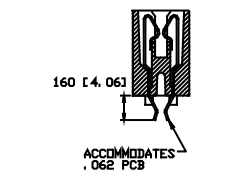
- * Accommodates .062 ±.008" PC board (Consult factory for other board thicknesses)
- * PPS or PCT insulator
- * Molded-in key available
- * High reliability/high cycle hairpin bellows contact
- * 1 amp current rating
- * 150 grams normal force minimum

TERMINATION TYPE

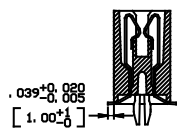
FOR PC BOARD LAYOUTS REFER TO WWW.EDGE CARDS.COM



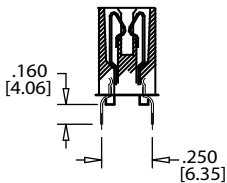
STAGGERED DIP SOLDER (CH)



CARD EXTENDER (CR)



SURFACE MOUNT (CF)

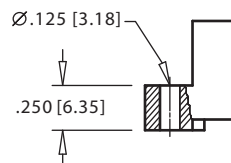


DIP SOLDER (CL)

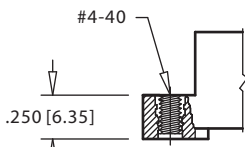
MOUNTING STYLE



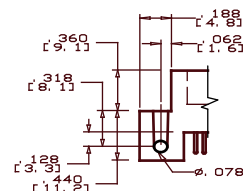
NO MOUNTING EARS (N)



FLUSH MOUNTING (D)



FLUSH MOUNTING WITH THREADED INSERT (T)



STRADDLE MOUNT (Q)
 Formally (Z)

