



Chipsmall Limited consists of a professional team with an average of over 10 year of expertise in the distribution of electronic components. Based in Hongkong, we have already established firm and mutual-benefit business relationships with customers from,Europe,America and south Asia,supplying obsolete and hard-to-find components to meet their specific needs.

With the principle of “Quality Parts,Customers Priority,Honest Operation,and Considerate Service”,our business mainly focus on the distribution of electronic components. Line cards we deal with include Microchip,ALPS,ROHM,Xilinx,Pulse,ON,Everlight and Freescale. Main products comprise IC,Modules,Potentiometer,IC Socket,Relay,Connector.Our parts cover such applications as commercial,industrial, and automotives areas.

We are looking forward to setting up business relationship with you and hope to provide you with the best service and solution. Let us make a better world for our industry!



Contact us

Tel: +86-755-8981 8866 Fax: +86-755-8427 6832

Email & Skype: info@chipsmall.com Web: www.chipsmall.com

Address: A1208, Overseas Decoration Building, #122 Zhenhua RD., Futian, Shenzhen, China

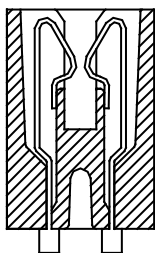


.039" [1.00MM] CONTACT CENTERS

FEATURES

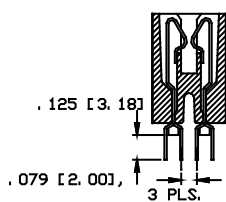
- * Accommodates .062 + - .008" PC board (Consult factory for other board thicknesses)
- * PPS or PCT insulator
- * Molded-in key available
- * 1 amp current rating
- * Highly reliable high cycle hairpin bellow contacts
- * 150 grams normal force minimum

READOUT

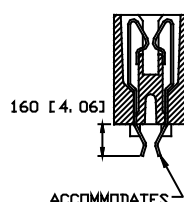


DUAL (D)

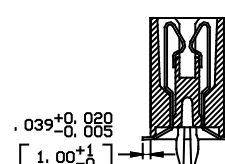
TERMINATION TYPE



STAGGERED DIP SOLDER (HR)

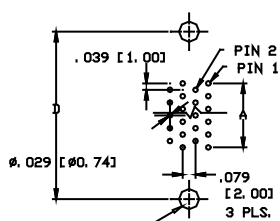


CARD EXTENDER (HR)

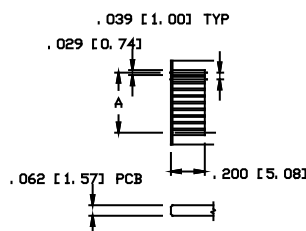


SURFACE MOUNT (HF)

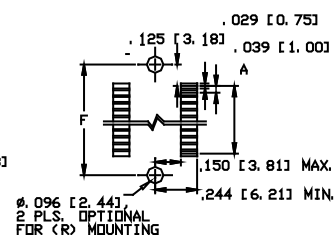
P.C.B. LAYOUTS



CONNECTOR SIDE

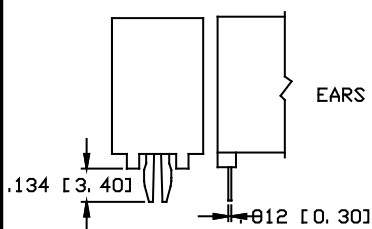


SOLDER END



CONNECTOR SIDE

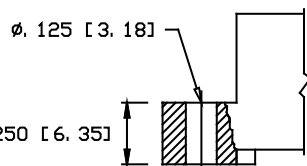
MOUNTING STYLE



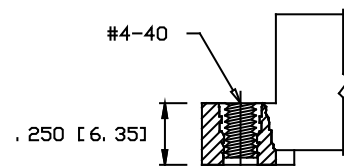
BOARD LOCK (R)



NO MOUNTING EARS (N)



FLUSH MOUNTING (D)



THREADED INSERT (T)

