



Chipsmall Limited consists of a professional team with an average of over 10 year of expertise in the distribution of electronic components. Based in Hongkong, we have already established firm and mutual-benefit business relationships with customers from,Europe,America and south Asia,supplying obsolete and hard-to-find components to meet their specific needs.

With the principle of "Quality Parts,Customers Priority,Honest Operation,and Considerate Service",our business mainly focus on the distribution of electronic components. Line cards we deal with include Microchip,ALPS,ROHM,Xilinx,Pulse,ON,Everlight and Freescale. Main products comprise IC,Modules,Potentiometer,IC Socket,Relay,Connector.Our parts cover such applications as commercial,industrial, and automotives areas.

We are looking forward to setting up business relationship with you and hope to provide you with the best service and solution. Let us make a better world for our industry!



Contact us

Tel: +86-755-8981 8866 Fax: +86-755-8427 6832

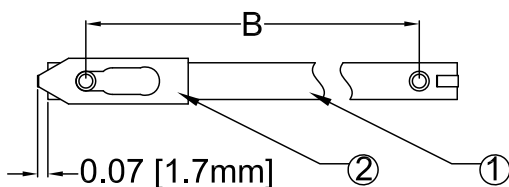
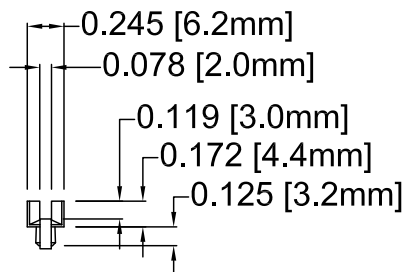
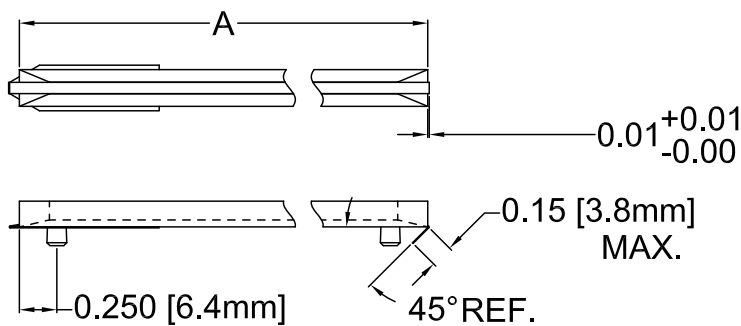
Email & Skype: info@chipsmall.com Web: www.chipsmall.com

Address: A1208, Overseas Decoration Building, #122 Zhenhua RD., Futian, Shenzhen, China

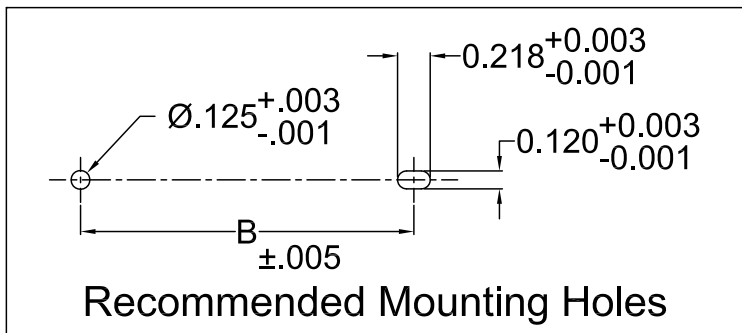


ITEM	Q'TY	PART NUMBER	PART DESCRIPTION
1	1	S-XXX-X	Anti-Static Press-In Card Guide
2	1	CS-600-F XX.XX	Conductive Insert

REV.	DESCRIPTION	DATE	APPROVED
B	Engineering Update w/o Changes	03/01/04	M. C.
C	Unit Conversion Error	12/17/07	M. C.
D	CI Length (.15" MAX) Update	10/06/09	T. Y.



Part No.	Conductive Insert	A ±0.030 [±0.76mm]	B ±0.024 [±0.61mm]
S-250	CS-600-F 10.75	2.538 (64.5mm)	2.030 (51.6mm)
S-300	CS-600-F 10.75	3.045 (77.3mm)	2.538 (64.5mm)
S-350	CS-600-F 10.75	3.553 (90.2mm)	3.045 (77.3mm)
S-400	CS-600-F 10.75	4.060 (103.1mm)	3.553 (90.2mm)
S-450	CS-600-F 10.75	4.568 (116.0mm)	4.060 (103.1mm)
S-500	CS-600-F 10.75	5.075 (128.9mm)	4.568 (116.0mm)
S-550	CS-600-F 10.75	5.583 (141.8mm)	5.075 (128.9mm)
S-600	CS-600-F 10.75	6.090 (154.7mm)	5.583 (141.8mm)
S-650	CS-600-F 10.75	6.598 (167.6mm)	6.090 (154.7mm)
S-700	CS-600-F 10.75	7.105 (180.5mm)	6.598 (167.6mm)
S-750	CS-600-F 10.75	7.613 (193.4mm)	7.105 (180.5mm)
S-800	CS-600-F 10.75	8.120 (206.2mm)	7.613 (193.4mm)
S-850	CS-600-F 14.00	8.628 (219.2mm)	8.120 (206.2mm)



STANDARD TOLERANCE (UNLESS OTHERWISE SPECIFIED)		 4 THOMAS, IRVINE, CA, 92618 TEL: (949) 951-8808 FAX: (949) 951-3974	
DECIMALS	ANGULAR		
.X ±.1	X° ±1°	TITLE: ANTI-STATIC PRESS-IN CARD GUIDEW/ CONDUCTIVE INSERT	
.XX ±.01			
.XXX ±.005		REVISION:	
DESIGNED: Michael Chen	DATE: 01/21/03	PART NO: S-XXX-CI	REVISION: D
CHECKED: D. Green	DATE: 01/21/03	CAGE CODE : 32559	SHEET # 1 OF 1
CAD GENERATED DOCUMENT, DO NOT MEASURE DRAWING.			