



Chipsmall Limited consists of a professional team with an average of over 10 year of expertise in the distribution of electronic components. Based in Hongkong, we have already established firm and mutual-benefit business relationships with customers from,Europe,America and south Asia,supplying obsolete and hard-to-find components to meet their specific needs.

With the principle of “Quality Parts,Customers Priority,Honest Operation,and Considerate Service”,our business mainly focus on the distribution of electronic components. Line cards we deal with include Microchip,ALPS,ROHM,Xilinx,Pulse,ON,Everlight and Freescale. Main products comprise IC,Modules,Potentiometer,IC Socket,Relay,Connector.Our parts cover such applications as commercial,industrial, and automotives areas.

We are looking forward to setting up business relationship with you and hope to provide you with the best service and solution. Let us make a better world for our industry!



## Contact us

Tel: +86-755-8981 8866 Fax: +86-755-8427 6832

Email & Skype: info@chipsmall.com Web: www.chipsmall.com

Address: A1208, Overseas Decoration Building, #122 Zhenhua RD., Futian, Shenzhen, China

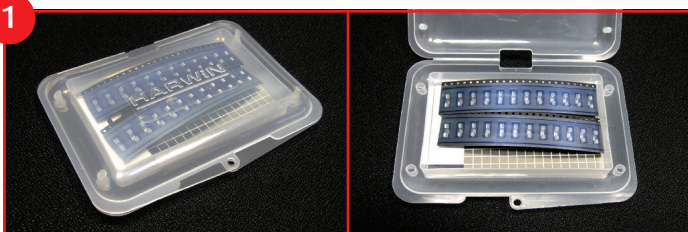


# Shield Can Kit Instruction Sheet

S01-806005KIT

# HARWIN

IS-39 Issue: 2 Date: 23/03/2015

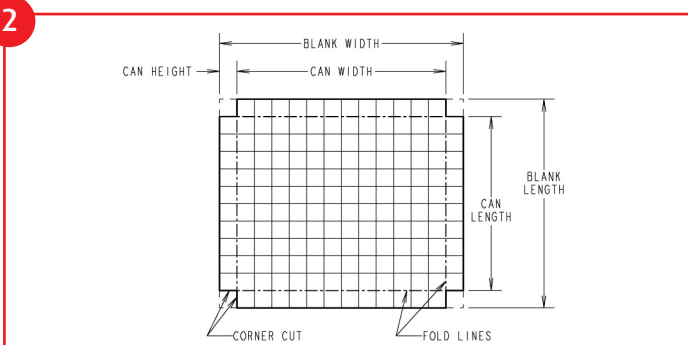


### Your Kit contains:

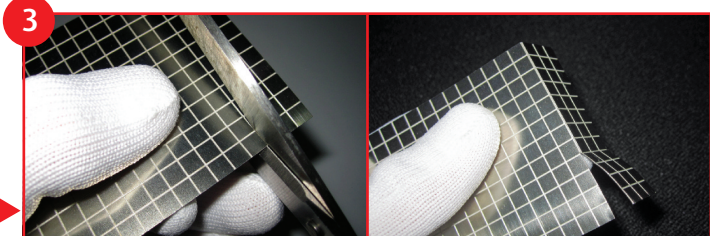
- 2 x Shield Can Sheets
- 24 x RFI Shield Clips
- 1 x Instruction Sheet

### Tools required:

- A pair of scissors
- A rule
- A solid, flat work surface

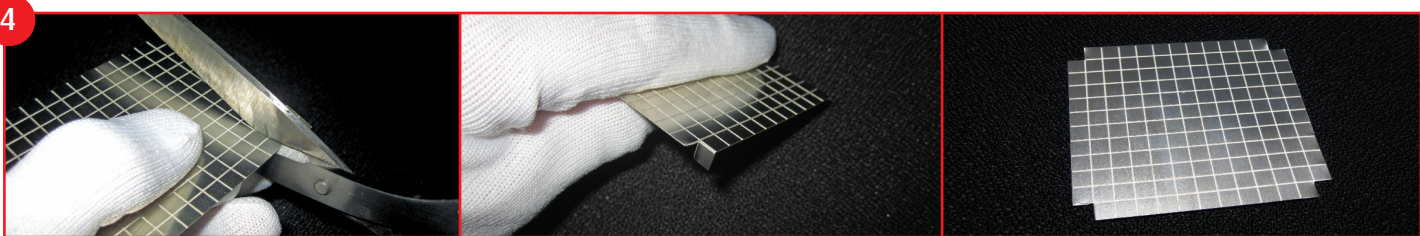


Use this diagram as a guide when cutting your etched Shield Can Sheets.



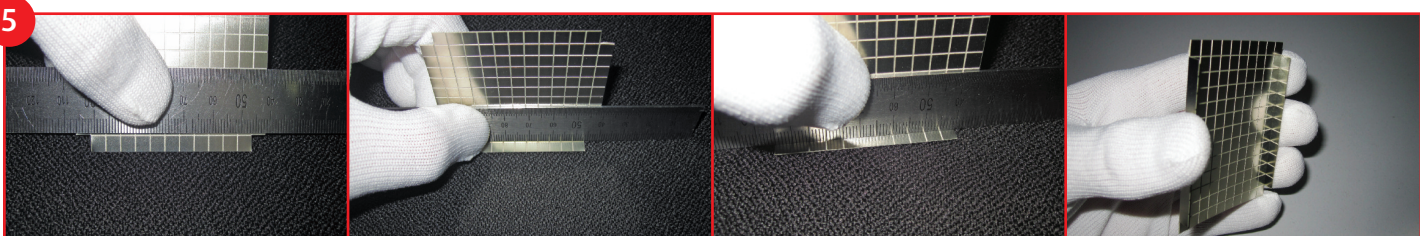
### Creating the blank:

- Cut along the etch lines to create blank size (Step 2).
- It's not necessary to cut all the way; fold the surplus section back and forth until it breaks away.



### Creating the flat pattern:

- Remove corners of the sheet; one grid square equals 5mm can height.
- Cut one edge with scissors, then fold back and forth along the other edge until the square breaks away.
- Repeat on the remaining three corners.

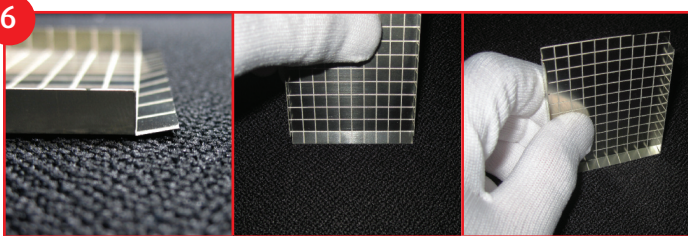


### Forming:

- Securely hold the rule along your fold line.
- Apply force to bend the sheet against the work surface.
- Ensure that the side is bent to 90° with etching inside the can.
- Repeat on the opposite side.

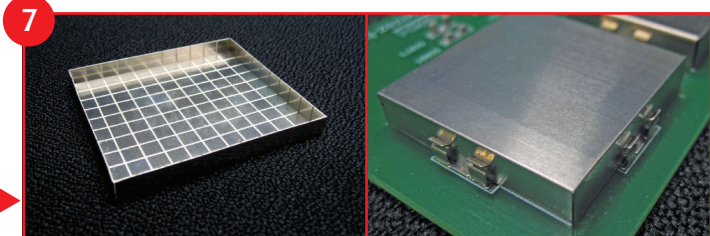
### Note:

Maintaining your hold on the rule whilst bending will ensure that the edge has a sharper form.



### Forming cont.:

- On the third side of the can, apply light force with hands to the fold line; forming a slight bend (above).
- Using your work surface, push the side flat against it (90° to top surface).
- Repeat on the opposite side.

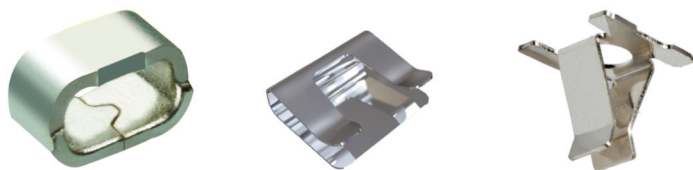
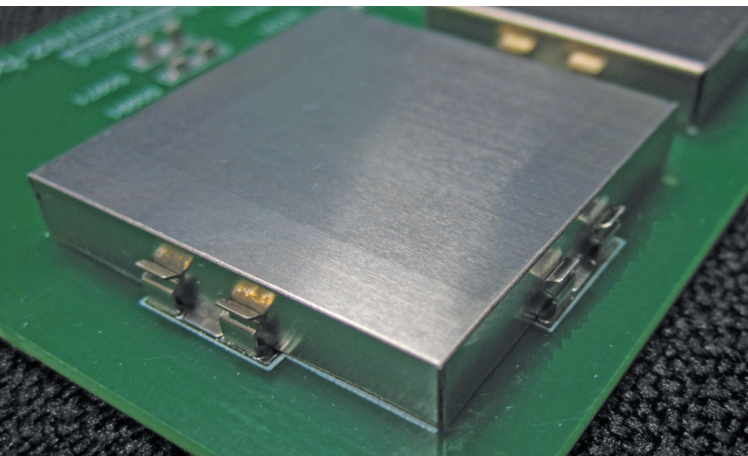
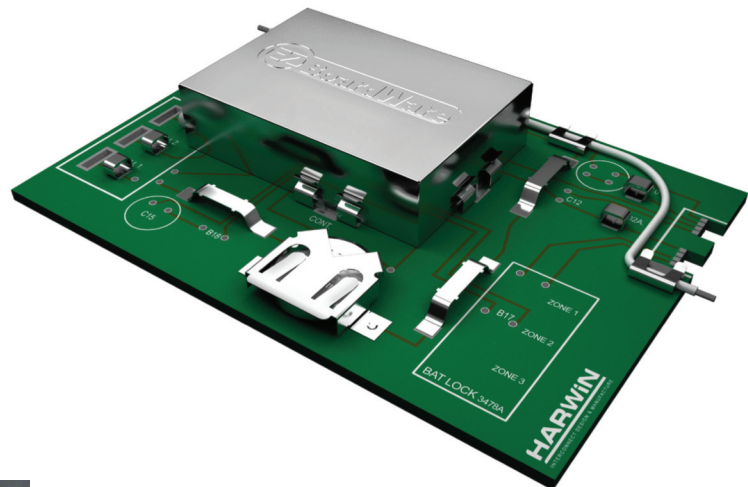


You now have a finished can! Use the can with S1711-46R RFI Shield Clips provided.

Harwin recommend S1711-46R clips are reflow soldered to a PCB.

## Pick & Place Ready By Design

- Simplifies production processes.
- Increased design flexibility and decreased costs.
- Surface mount designs available in tape & reel for fully automated assembly.
- Free samples available on-line at [www.harwin.com/EZ-Boardware](http://www.harwin.com/EZ-Boardware)
- Stocked in depth throughout our world-wide distribution network.



To check stock availability  
visit [www.harwin.com](http://www.harwin.com)  
and enter part no.  
**S01-806005KIT**