



Chipsmall Limited consists of a professional team with an average of over 10 year of expertise in the distribution of electronic components. Based in Hongkong, we have already established firm and mutual-benefit business relationships with customers from,Europe,America and south Asia,supplying obsolete and hard-to-find components to meet their specific needs.

With the principle of “Quality Parts,Customers Priority,Honest Operation,and Considerate Service”,our business mainly focus on the distribution of electronic components. Line cards we deal with include Microchip,ALPS,ROHM,Xilinx,Pulse,ON,Everlight and Freescale. Main products comprise IC,Modules,Potentiometer,IC Socket,Relay,Connector.Our parts cover such applications as commercial,industrial, and automotives areas.

We are looking forward to setting up business relationship with you and hope to provide you with the best service and solution. Let us make a better world for our industry!



## Contact us

Tel: +86-755-8981 8866 Fax: +86-755-8427 6832

Email & Skype: info@chipsmall.com Web: www.chipsmall.com

Address: A1208, Overseas Decoration Building, #122 Zhenhua RD., Futian, Shenzhen, China



# Customer Information Sheet

DRAWING No.: S02-XXXXXXX0

IF IN DOUBT - ASK

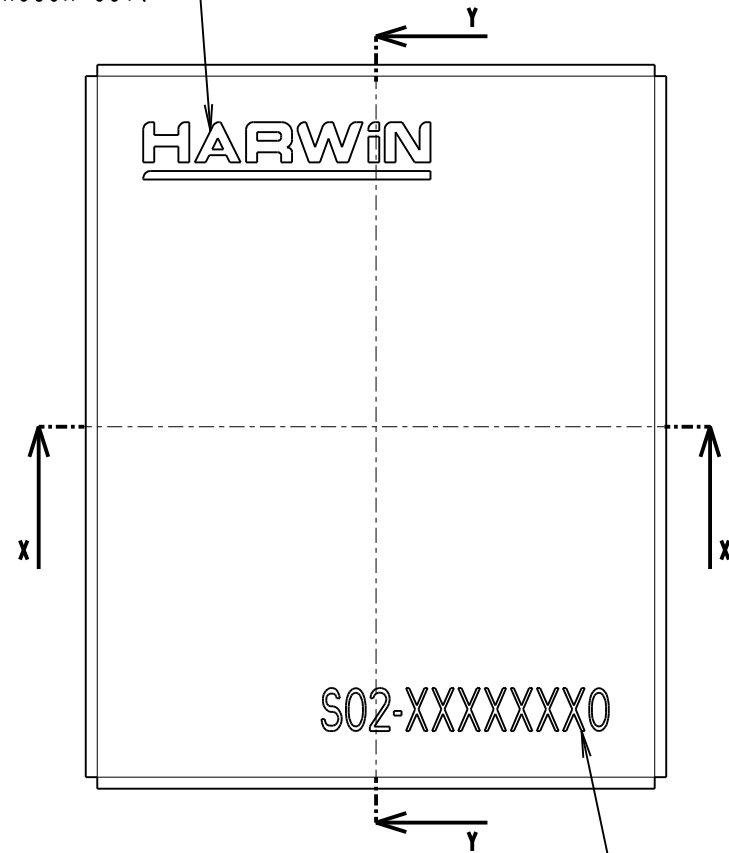
©

NOT TO SCALE

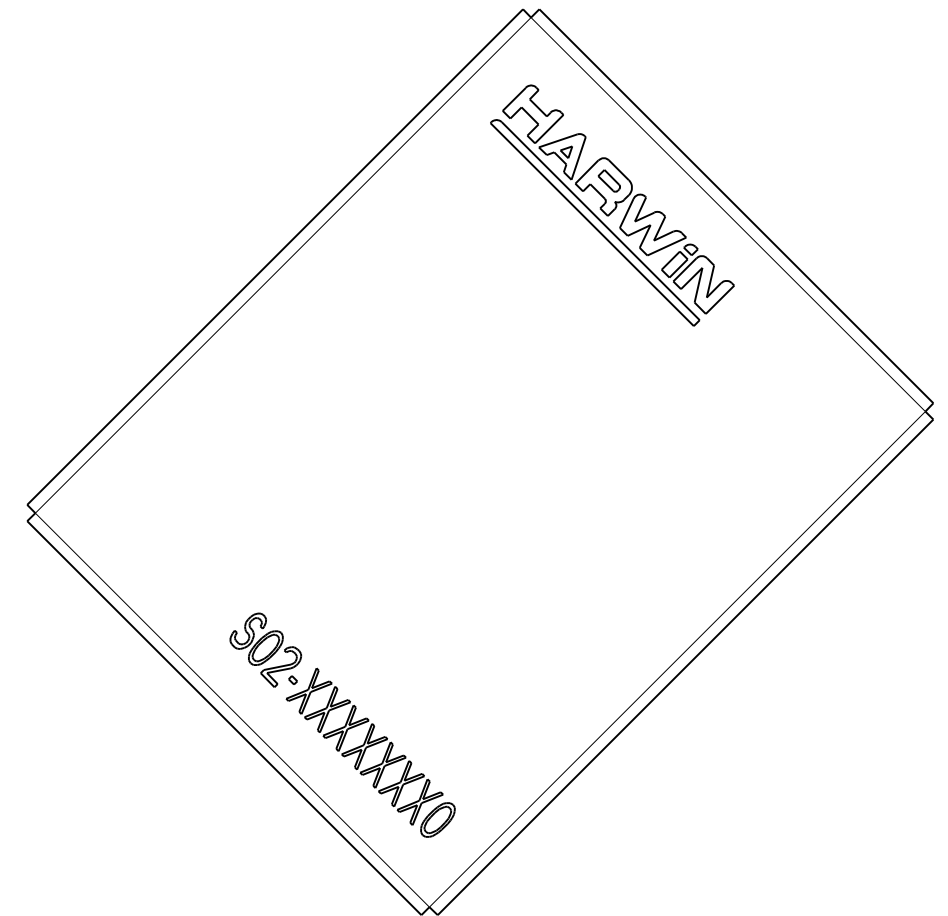
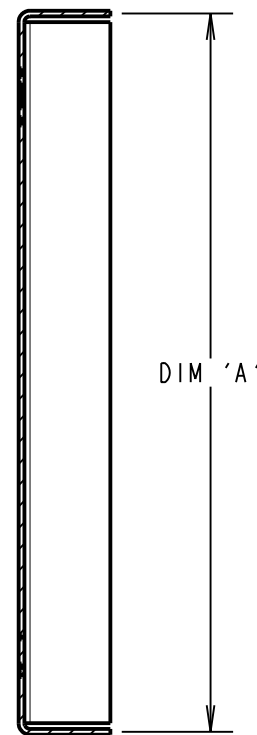
THIRD ANGLE PROJECTION

ALL DIMENSIONS IN mm

EMBOSSED HARWIN LOGO  
NOT THROUGH CUT.



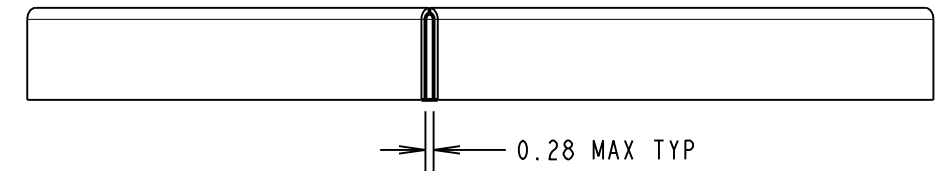
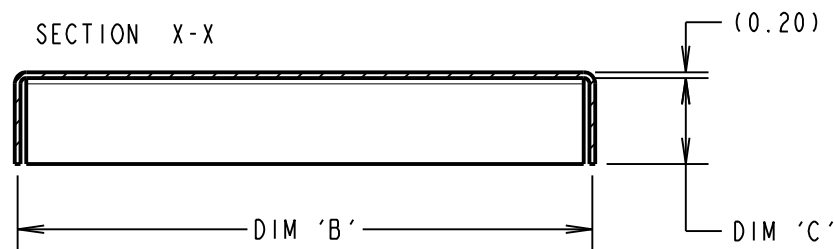
SECTION Y-Y



VIEW SHOWING CORNER OF THE SHIELD CAN

EMBOSSED PART NUMBER (SEE ORDER CODE).  
NO THROUGH CUT.

SECTION X-X



NOTES:

- DIM 'C', HEIGHT OF THE CAN IS FROM THE BOTTOM EDGE TO THE INSIDE OF THE TOP FACE.
- BOTH DIM 'A' AND 'B' ARE FROM THE CENTRE OF THE MATERIAL THICKNESS.
- CANS ARE PACKED INDIVIDUALLY IN POLY BAGS.
- SHIELD CAN IS RECOMMENDED FOR USE WITH RFI SHIELD CLIPS: S0971-46R, S0981-46R, S0991-46R, S1001-46R AND S1721-XXR.
- SEE S02-XXXXXXX0R FOR DETAILS OF CAN IN TAPE AND REEL.



ORDER CODE:

**S02-XXXXXXX0**

SIZE:  
DIM 'A' = LENGTH  
DIM 'B' = WIDTH  
DIM 'C' = HEIGHT  
FINISH:  
0 = UNPLATED FINISH

SB	6	11.04.17	20551
NAME	ISS.	DATE	C/NOTE
APPROVED:		S. BENNETT	
CHECKED:		M. PERREN	
DRAWN:		S. BENNETT	
CUSTOMER REF.:			
ASSEMBLY DRG:			

PART No.	DIM 'A'	DIM 'B'	DIM 'C'
S02-20150300	20.0	15.0	3.0
S02-25200300	25.0	20.0	3.0
S02-30200250	30.0	20.0	2.5

**HARWIN**

www.harwin.com  
technical@harwin.com

THIS DRAWING AND ANY INFORMATION OR DESCRIPTIVE MATTER SET OUT HEREON ARE CONFIDENTIAL AND COPYRIGHT PROPERTY OF THE HARWIN GROUP AND MUST NOT BE DISCLOSED, LOANED, COPIED OR USED FOR MANUFACTURING, TENDERING OR FOR ANY OTHER PURPOSE WITHOUT THEIR WRITTEN PERMISSION.

TOLERANCES  
X. = ±1mm  
X.X = ±0.25mm  
X.XX = ±0.10mm  
X.XXX = ±0.01mm  
ANGLES = ±5°  
UNLESS STATED

MATERIAL:  
NICKEL SILVER, HALF HARD NS106, TO BS1653 0.20mm THICK  
FINISH: SEE ABOVE  
S/AREA: mm<sup>2</sup>

TITLE: EZ-BOARDWARE SHIELD CAN

DRAWING NUMBER: S02-XXXXXXX0

SHT 2 OF 2