



Chipsmall Limited consists of a professional team with an average of over 10 year of expertise in the distribution of electronic components. Based in Hongkong, we have already established firm and mutual-benefit business relationships with customers from,Europe,America and south Asia,supplying obsolete and hard-to-find components to meet their specific needs.

With the principle of "Quality Parts,Customers Priority,Honest Operation,and Considerate Service",our business mainly focus on the distribution of electronic components. Line cards we deal with include Microchip,ALPS,ROHM,Xilinx,Pulse,ON,Everlight and Freescale. Main products comprise IC,Modules,Potentiometer,IC Socket,Relay,Connector.Our parts cover such applications as commercial,industrial, and automotives areas.

We are looking forward to setting up business relationship with you and hope to provide you with the best service and solution. Let us make a better world for our industry!



Contact us

Tel: +86-755-8981 8866 Fax: +86-755-8427 6832

Email & Skype: info@chipsmall.com Web: www.chipsmall.com

Address: A1208, Overseas Decoration Building, #122 Zhenhua RD., Futian, Shenzhen, China





Laser/Ink Jet Labels

PANDUIT[®]

infrastructure for a connected world

Laser/Inkjet Labels

Panduit is a global leader in reliable and innovative solutions for identification and safety. Products are engineered for a wide variety of industrial applications – including electrical, electronics, industrial, and network. Panduit offers a complete leading-edge line of labeling software and high-performance label materials (all RoHS compliant) that provide enhanced productivity, dependability, and value to all infrastructure labeling requirements.

*Representative offering only,
visit www.panduit.com for a
complete listing of products.*



Cable/Wire Labels

Turn-Tell® Labels.....4
 Self-Laminating Polyester Labels.....5-6
 Self-Laminating Polyvinylidene Fluoride (PVDF) Labels..... 6
 LabelCore™ Fiber Optic Cable Identification System 7
 Non-Laminated Polyolefin Labels7

Component Labels

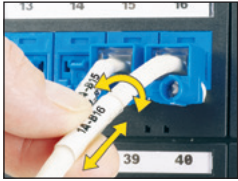
Polyester Component Labels8
 Silver Polyester Component Labels9
 Tamper-Evident Polyester Component Labels.....9
 Non-Adhesive Polyester Network Labels.....10
 Polyolefin Network Labels10

Labeling Software

Easy-Mark™ Software.....11
 CAD-Connect™ Software.....11

Turn-Tell® Labels

- Labels rotate and slide along cables after installation for visibility from any angle, and allow repositioning on the wire/cable to align legends for improved aesthetics
- Ideal for use in high-density or space-constrained cable applications
- Eliminate the need to disconnect wire or replace label in the event of re-termination
- Temperature range: -0°F to 275°F (-18°C to 135°C)



Part Number	Print-On Area Color	Width		Length		Print-On Area Height		Min. Cable O.D.		Max. Cable O.D.		Wire/Cable Size Range	Labels Per Row	Labels Per Sheet	Labels Per Pkg.
		In.	mm	In.	mm	In.	mm	In.	mm	In.	mm				
R050X075X1J	White	0.50	12.7	0.75	19.1	0.25	6.4	0.12	3.05	0.16	4.1	18 – 14 AWG	12	84	5000
R050X125X1J	White	0.50	12.7	1.25	31.8	0.38	9.7	0.16	4.1	0.22	5.6	Cat. 3 UTP/12 – 10 AWG	12	60	5000
R050X150X1J	White	0.50	12.5	1.50	38.1	0.50	12.7	0.22	5.6	0.28	7.1	Cat. 5e UTP/Cat. 6 UTP/Cat. 6A UTP/CAT. 5e FTP/10 – 6 AWG	12	48	2500
R100X075X1J	White	1.00	25.4	0.75	19.1	0.25	6.4	0.12	3.05	0.16	4.1	18 – 14 AWG	6	42	2500
R100X125X1J	White	1.00	25.4	1.25	31.8	0.38	9.7	0.16	4.1	0.22	5.6	Cat. 3 UTP/12 – 10 AWG	6	30	2500
R100X150X1J	White	1.00	25.4	1.50	38.1	0.50	12.7	0.22	5.6	0.28	7.1	Cat. 5e UTP/Cat. 6 UTP/Cat. 6A UTP/Cat. 5e FTP/10 – 6 AWG	6	24	1000
R100X225X1J	White	1.00	25.4	2.25	57.2	0.75	19.1	0.28	7.1	0.39	9.9	Cat. 6 FTP/Cat. 6A UTP/ Cat. 6A FTP/8 – 4 AWG	6	18	1000
R100X400X1J	White	1.00	25.4	4.00	101.6	1.00	25.4	0.39	9.9	0.95	24.1	2 – 1 AWG	6	12	1000
R150X150X1J	White	1.50	38.1	1.50	38.1	0.50	12.7	0.22	5.6	0.28	7.1	Cat. 5e UTP/Cat. 6 UTP/Cat. 6A UTP/CAT. 5e FTP/10 – 6 AWG	4	16	1000
R200X150X1J	White	2.00	50.8	1.50	38.1	0.50	12.7	0.22	5.6	0.28	7.1	Cat. 5e UTP/Cat. 6 UTP/Cat. 6A UTP/Cat. 5e FTP/10 – 6 AWG	3	12	1000
R200X225X1J	White	2.00	50.8	2.25	57.2	0.75	19.1	0.28	7.1	0.39	9.9	Cat. 6 FTP/Cat. 6A UTP/ Cat. 6A FTP/8 – 4 AWG	3	9	500
R200X400X1J	White	2.00	50.8	4.00	101.6	1.00	25.4	0.39	9.9	0.95	24.1	2 – 1 AWG	3	6	500

Order number of labels required in multiples of Standard Package Quantity.

Self-Laminating Polyester Labels

- Include a colored print-on area and clear over-laminate to protect the legend for clear and durable identification
- Labels are sized specifically for wire and cable applications
- Provide durability; high-temperature resistance, and dimensional stability; do not stretch or easily tear; preferred material for wire/cable labeling
- Temperature Range: 0°F to 275°F (-18°C to 135°C)
- For YAJ parts only: UL recognized, UL969, File # MH14979



Part Number	Print-On Area Color	Width		Length		Print-On Area Height		Min. Cable O.D.		Max. Cable O.D.		Wire/Cable Size Range	Labels Per Row	Labels Per Sheet	Labels Per Pkg.
		In.	mm	In.	mm	In.	mm	In.	mm	In.	mm				
S050X075YAJ	White	0.50	12.7	0.75	19.1	0.25	6.4	0.08	2.0	0.16	4.0	18 – 14 AWG	13	169	5000
S050X125YAJ	White	0.50	12.7	1.25	31.8	0.38	9.7	0.12	3.1	0.28	7.0	Cat. 3 UTP/12 – 10 AWG	13	104	5000
S050X150YAJ	White	0.50	12.7	1.50	38.1	0.50	12.7	0.16	4.0	0.32	8.1	Cat. 5e UTP/Cat. 6 UTP/Cat. 6A UTP/Cat. 5e FTP/10 – 6 AWG	13	78	5000
S075X075YAJ	White	0.75	19.1	0.75	19.1	0.25	6.4	0.08	2.0	0.16	4.0	18 – 14 AWG	9	117	2500
S075X125YAJ	White	0.75	19.1	1.25	31.8	0.38	9.7	0.12	3.1	0.28	7.0	Cat. 3 UTP/12 – 10 AWG	9	72	2500
S075X150YAJ	White	0.75	19.1	1.50	38.1	0.50	12.7	0.16	4.0	0.32	8.1	Cat. 5e UTP/Cat. 6 UTP/Cat. 6A UTP/Cat. 5e FTP/10 – 6 AWG	9	54	2500
S100X075YAJ	White	1.00	25.4	0.75	19.1	0.25	6.4	0.08	2.0	0.16	4.0	18 – 14 AWG	7	91	2500
S100X125YAJ	White	1.00	25.4	1.25	31.8	0.38	9.7	0.12	3.1	0.28	7.0	Cat. 3 UTP/12 – 10 AWG	7	56	2500
S100X150YAJ	White	1.00	25.4	1.50	38.1	0.50	12.7	0.16	4.0	0.32	8.1	Cat. 5e UTP/Cat. 6 UTP/Cat. 6A UTP /Cat. 5e FTP/10 – 6 AWG	7	42	2500
S100X150YBJ	Blue	1.00	25.4	1.50	38.1	0.50	12.7	0.16	4.0	0.32	8.1	Cat. 5e UTP/Cat. 6 UTP/Cat. 6A UTP/Cat. 5e FTP/10 – 6 AWG	7	42	2500
S100X150YCJ	Brown	1.00	25.4	1.50	38.1	0.50	12.7	0.16	4.0	0.32	8.1	Cat. 5e UTP/Cat. 6 UTP/Cat. 6A UTP/Cat. 5e FTP/10 – 6 AWG	7	42	2500
S100X150YDJ	Green	1.00	25.4	1.50	38.1	0.50	12.7	0.16	4.0	0.32	8.1	Cat. 5e UTP/Cat. 6 UTP/Cat. 6A UTP/Cat. 5e FTP/10 – 6 AWG	7	42	2500
S100X150YEJ	Gray	1.00	25.4	1.50	38.1	0.50	12.7	0.16	4.0	0.32	8.1	Cat. 5e UTP/Cat. 6 UTP/Cat. 6A UTP/Cat. 5e FTP/10 – 6 AWG	7	42	2500
S100X150YFJ	Orange	1.00	25.7	1.50	31.8	0.50	12.7	0.16	4.0	0.28	8.1	Cat. 5e UTP/Cat. 6 UTP/Cat. 6A UTP/Cat. 5e FTP/10 – 6 AWG	7	42	2500
S100X150YGJ	Purple	1.00	25.4	1.50	38.1	0.50	12.7	0.16	4.0	0.32	8.1	Cat. 5e UTP/Cat. 6 UTP/Cat. 6A UTP/Cat. 5e FTP/10 – 6 AWG	7	42	2500
S100X150YHJ	Red	1.00	25.4	1.50	38.1	0.50	12.7	0.16	4.0	0.32	8.1	Cat. 5e UTP/Cat. 6 UTP/Cat. 6A UTP/Cat. 5e FTP/10 – 6 AWG	7	42	2500
S100X150YIJ	Yellow	1.00	25.4	1.50	38.1	0.50	12.7	0.16	4.0	0.32	8.1	Cat. 5e UTP/Cat. 6 UTP/Cat. 6A UTP/Cat. 5e FTP/10 – 6 AWG	7	42	2500

Order number of labels required in multiples of Standard Package Quantity.

Table continues on next page

Contact Technical Support at 866.871.4571

Self-Laminating Polyester Labels (continued)

Part Number	Print-On Area Color	Width		Length		Print-On Area Height		Min. Cable O.D.		Max. Cable O.D.		Wire/Cable Size Range	Labels Per Row	Labels Per Sheet	Labels Per Pkg.
		In.	mm	In.	mm	In.	mm	In.	mm	In.	mm				
S100X225YAJ	White	1.00	25.4	2.25	57.2	0.75	19.1	0.24	6.1	0.48	12.1	Cat. 6 FTP/Cat. 6A UTP/Cat. 6A FTP/8 – 4 AWG	8	32	1000
S100X225YBJ	Blue	1.00	25.4	2.25	57.2	0.75	19.1	0.24	6.1	0.48	12.1	Cat. 6 FTP/Cat. 6A UTP/Cat. 6A FTP/8 – 4 AWG	8	32	1000
S100X225Y CJ	Brown	1.00	25.4	2.25	57.2	0.75	19.1	0.24	6.1	0.48	12.1	Cat. 6 FTP/Cat. 6A UTP/Cat. 6A FTP/8 – 4 AWG	8	32	1000
S100X225YDJ	Green	1.00	25.4	2.25	57.2	0.75	19.1	0.24	6.1	0.48	12.1	Cat. 6 FTP/Cat. 6A UTP/Cat. 6A FTP/8 – 4 AWG	8	32	1000
S100X225YEJ	Gray	1.00	25.4	2.25	57.2	0.75	19.1	0.24	6.1	0.48	12.1	Cat. 6 FTP/Cat. 6A UTP/Cat. 6A FTP/8 – 4 AWG	8	32	1000
S100X225YFJ	Orange	1.00	25.4	2.25	57.2	0.75	19.1	0.24	6.1	0.48	12.1	Cat. 6 FTP/Cat. 6A UTP/Cat. 6A FTP/8 – 4 AWG	8	32	1000
S100X225YGJ	Purple	1.00	25.4	2.25	57.2	0.75	19.1	0.24	6.1	0.48	12.1	Cat. 6 FTP/Cat. 6A UTP/Cat. 6A FTP / 8 – 4 AWG	8	32	1000
S100X225YHJ	Red	1.00	25.4	2.25	57.2	0.75	19.1	0.24	6.1	0.48	12.1	Cat. 6 FTP/Cat. 6A UPT/Cat. 6A FTP/8 – 4 AWG	8	32	1000
S100X225YIJ	Yellow	1.00	25.4	2.25	57.2	0.75	19.1	0.24	6.1	0.48	12.1		8	32	1000
S100X400YAJ	White	1.00	25.4	4.00	101.6	1.00	25.4	0.32	8.1	0.95	24.3	2 – 1 AWG	7	14	1000
S100X650YAJ	White	1.00	25.4	6.50	165.1	1.50	38.1	0.48	12.1	1.59	40.4	1/0 – 350 MCM	7	7	1000
S150X400YAJ	White	1.50	38.1	4.00	101.6	1.00	25.4	0.32	8.1	0.95	24.3	2 – 1 AWG	5	14	1000
S150X400YIJ	Yellow	1.50	38.1	4.00	101.6	1.00	25.4	0.32	8.1	0.95	24.3	2 – 1 AWG	5	14	1000
S200X150YAJ	White	2.00	50.8	1.50	38.1	0.50	12.7	0.16	4.0	0.32	8.1	Cat. 5e UTP/Cat. 6 UTP/Cat. 6A UTP/Cat. 5e FTP/10 – 6 AWG	4	24	1000
S200X225YAJ	White	2.00	50.8	2.25	57.2	0.75	19.1	0.24	6.1	0.48	12.1	Cat. 6 FTP/Cat. 6A UPT/Cat. 6A FTP/8 – 4 AWG	4	16	1000
S200X400YAJ	White	2.00	50.8	4.00	101.6	1.00	25.4	0.32	8.1	0.95	24.3	2 – 1 AWG	4	8	1000
S200X650YAJ	White	2.00	50.8	6.50	165.1	1.50	38.1	0.48	12.1	1.59	40.4	1/0 – 350 MCM	4	4	500

Order number of labels required in multiples of Standard Package Quantity.

Self-Laminating Polyvinylidene Fluoride (PVDF) Labels

- Self-extinguishing material
- Recommended alternative to Tedlar*
- Labels are sized specifically for wire and cable applications
- Temperature range: -65°F to 275°F (-53.9°C to 135°C)
- UL recognized, UL969, File# MH14979
- cUL recognized, C22.2 No. 0.15-01, File# MH14979



Part Number	Print-On Area Color	Width		Length		Print-On Area Height		Min. Cable O.D.		Max. Cable O.D.		Wire/Cable Size Range	Labels Per Row	Labels Per Sheet	Labels Per Pkg.
		In.	mm	In.	mm	In.	mm	In.	mm	In.	mm				
S100X150T1J	White	1.00	25.4	1.50	38.1	0.50	12.7	0.16	4.0	0.28	7.1	Cat. 5e UTP/Cat. 6 UTP/Cat. 6A UTP/Cat. 5e FTP/10 – 6 AWG	7	42	2500
S100X225T1J	White	1.00	25.4	2.25	57.2	0.75	19.1	0.28	7.1	0.39	9.9	Cat. 6 FTP/Cat. 6A UTP/ Cat. 6A FTP/8 – 4 AWG	8	28	1000

Order number of labels required in multiples of Standard Package Quantity.

*Tedlar is a registered trademark of E.I. du Pont de Nemours and Company.

LabelCore™ Fiber Optic Cable Identification System

- Provides a larger labeling surface on small fiber cables and allows legends to be clearly seen
- Sleeve is made of flexible PVC material
- Locate sleeve on straight section of cable at least 2 inches from fiber boot

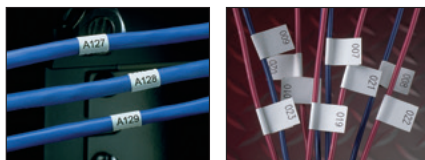


Part Number	Color	Part Description	Std. Pkg. Qty.
NWSLC-2Y	Yellow	Yellow cable identification sleeve for 2mm simplex fiber cable, 1 inch long, 100 per pack, use with labels: S100X160YAJ or S100X150YAJ (Laser/Inkjet); S100X160VAC or S100X150VAC (LS8E Hand-held Printer); S100X150VA1Y or S100X150VATY (Thermal Transfer Printer).	100
NWSLC-2Y-AQ	Aqua	Aqua cable identification sleeve for 2mm simplex cable, 1 inch long, 100 per pack, use with labels: S100X160YAJ or S100X150YAJ (Laser/Inkjet); S100X160VAC or S100X150VAC (LS8E Hand-held Printer); S100X150VA1Y or S100X150VATY (Thermal Transfer Printer).	100
NWSLC-3Y	Orange	Orange cable identification sleeve for 3mm simplex cable, 1 inch long, 100 per pack, use with labels: S100X160YAJ or S100X150YAJ (Laser/Inkjet); S100X160VAC or S100X150VAC (LS8E Hand-held Printer); S100X150VA1Y or S100X150VATY (Thermal Transfer Printer).	100
NWSLC-7Y	White	White cable identification sleeve for 3mm duplex fiber cable, 1 inch long, 100 per pack, use with labels: S100X225YAJ (Laser/Inkjet); S100X225VAC (LS8E Hand-held Printer); S100X225VATY or S200X225VATY (Thermal Transfer Printer).	100
NWSLC2-2Y	Yellow	Yellow cable identification sleeve for 2mm simplex cable, 2 inches long, 100 per pack, use with labels: S200X150YAJ (Laser/Inkjet) or S200X150VATY (Thermal Transfer Printer).	100
NWSLC2-2Y-AQ	Aqua	Aqua cable identification sleeve for 2mm simplex cable, 2 inches long, 100 per pack, use with labels: S200X150YAJ (Laser/Inkjet) or S200X150VATY (Thermal Transfer Printer).	100
NWSLC2-3Y	Orange	Orange cable identification sleeve for 3mm simplex cable, 2 inches long, 100 per pack, use with labels: S200X150YAJ (Laser/Inkjet) or S200X150VATY (Thermal Transfer Printer).	100
NWSLC2-7Y	White	White cable identification sleeve for 3mm duplex fiber cable, 2 inches long, 100 per pack, use with labels: S200X225YAJ (Laser/Inkjet) S200X225VATY (Thermal Transfer Printer).	100

Order number of sleeves by Standard Package Quantity.

Non-Laminated Polyolefin Labels

- Use as wrap-around label or flag-style marker for wire/cable labeling
- Conformable material for general identification
- Temperature range: -40°F to 180°F (-40°C to 82°C)



Part Number	Color	Width		Length		Min. Cable O.D.		Max. Cable O.D.		Wire/Cable Size Range	Labels Per Row	Labels Per Sheet	Labels Per Pkg.
		In.	mm	In.	mm	In.	mm	In.	mm				
N025X075FJJ	White	0.25	6.4	0.75	19.1	0.12	3.1	0.16	4.1	12 – 10 AWG	25	275	10000
N025X125FJJ	White	0.25	6.4	1.25	31.8	0.20	5.1	0.32	8.1	10 – 6 AWG	25	175	10000
N025X150FJJ	White	0.25	6.4	1.50	38.1	0.24	6.1	0.40	10.2	8 – 2 AWG	67	150	10000
N050X075FJJ	White	0.50	12.7	0.75	19.1	0.12	3.1	0.16	4.1	12 – 10 AWG	14	154	10000
N050X125FJJ	White	0.50	12.7	1.25	31.8	0.20	5.1	0.32	8.1	10 – 6 AWG	14	98	10000
N050X150FJJ	White	0.50	12.7	1.50	38.1	0.24	6.1	0.40	10.2	8 – 2 AWG	14	84	5000
N100X075FJJ	White	1.00	25.4	0.75	19.1	0.12	3.1	0.16	4.1	12 – 10 AWG	7	77	5000
N100X125FJJ	White	1.00	25.4	1.25	31.8	0.20	4.1	0.32	8.1	10 – 6 AWG	7	49	5000
N100X150FJJ	White	1.00	25.4	1.50	38.1	0.24	6.1	0.40	10.2	8 – 2 AWG	7	42	2500

Order number of labels required in multiples of Standard Package Quantity.

Polyester Component Labels

- Used to identify patch panels, faceplates, punch-down blocks, and other network systems hardware
- Used to identify electrical and electronic components and devices
- Temperature range: -40°F to 311°F (-40°C to 154°C)
- UL recognized, UL969, File# MH14979
- cUL recognized, C22.2 No. 0.15-01, File# MH14979



Part Number	Color	Width		Height		Labels Per Row	Labels Per Sheet	Labels Per Pkg.
		In.	mm	In.	mm			
C038X038YJJ	White	0.38	9.7	0.38	9.7	16	352	10000
C038X038YLJ	Yellow	0.38	9.7	0.38	9.7	16	352	10000
C050X044YJJ	White	0.50	12.7	0.44	11.2	13	247	10000
C060X020YJJ	White	0.60	15.2	0.20	5.1	11	385	10000
C075X025YJJ	White	0.75	19.1	0.25	6.4	9	270	10000
C075X025YLJ	Yellow	0.75	19.1	0.25	6.4	9	270	10000
C075X050YJJ	White	0.75	19.1	0.50	12.7	9	153	10000
C080X020YJJ	White	0.80	20.3	0.20	5.1	8	280	10000
C100X025YJJ	White	1.00	25.4	0.25	6.4	7	210	10000
C100X038YJJ	White	1.00	25.4	0.38	9.7	7	140	5000
C100X050YJJ	White	1.00	25.4	0.50	12.7	7	119	10000
C100X050YLJ	Yellow	1.00	25.4	0.50	12.7	7	119	5000
C100X075YJJ	White	1.00	25.4	0.75	19.1	7	84	5000
C100X150YJJ	White	1.00	25.4	1.50	38.1	7	42	2500
C150X050YJJ	White	1.50	38.1	0.50	12.7	5	80	2500
C150X050YLJ	Yellow	1.50	38.1	0.50	12.7	5	80	2500
C150X075YJJ	White	1.50	38.1	0.75	19.1	5	60	2500
C160X020YJJ	White	1.60	40.6	0.20	5.1	4	140	5000
C200X050YJJ	White	2.00	50.8	0.50	12.7	4	64	1000
C200X100YJJ	White	2.00	50.8	1.00	25.4	4	28	1000
C200X100YLJ	Yellow	2.00	50.8	1.00	25.4	4	28	1000
C200X125YJJ	White	2.00	50.8	1.25	31.8	4	28	1000
C275X125YJJ	White	2.75	69.9	1.25	31.8	6	18	1000
C300X038YJJ	White	3.00	76.2	0.38	9.7	2	40	1000
C300X100YJJ	White	3.00	76.2	1.00	25.4	2	18	1000
C350X100YJJ	White	3.50	88.9	1.00	25.4	2	20	1000
C400X100YJJ	White	4.00	101.6	1.00	25.4	2	20	1000
C400X200YJJ	White	4.00	101.6	2.00	50.8	2	10	1000
C400X400YJJ	White	4.00	101.6	4.00	101.6	2	4	1000
C788X050YJJ	White	7.88	200.2	0.50	12.7	1	16	400
C850X1100YJJ	White	8.50	215.9	11.00	279.4	1	1	25
C850X1100YLJ	Yellow	8.50	215.9	11.00	279.4	1	1	25

Order number of labels required in multiples of Standard Package Quantity.

Silver Polyester Component Labels – FOR LASER PRINTERS ONLY

- Used to identify patch panels, faceplates, punch-down blocks, and other network systems hardware
- Used to identify electrical and electronic components and devices
- Temperature range: -0°F to 275°F (-18°C to 135°C)
- UL recognized, UL969, File# MH14979
- cUL recognized, C22.2 No. 0.15-01, File# MH14979

Part Number	Color	Width		Height		Labels Per Row	Labels Per Sheet	Labels Per Pkg.
		In.	mm	In.	mm			
C075X025YML	Silver	0.75	19.1	0.25	6.4	9	270	10000
C100X050YML	Silver	1.00	25.4	0.50	12.7	7	119	10000
C150X050YML	Silver	1.50	38.1	0.50	12.7	5	85	10000
C275X125YML	Silver	2.75	69.9	1.25	31.8	6	18	1000

Order number of labels required in multiples of Standard Package Quantity.

Tamper-Evident Polyester Component Labels – FOR LASER PRINTERS ONLY

- Allow you to see if there has been label tampering
- Leave checkerboard of silver material when label is removed
- Temperature range: -40°F to 302°F (-40°C to 150°C)



Part Number	Color	Width		Height		Labels Per Row	Labels Per Sheet	Labels Per Pkg.
		In.	mm	In.	mm			
C075X025AAL	Silver	0.75	19.1	0.25	6.35	9	270	10000
C100X050AAL	Silver	1.00	25.4	0.50	12.7	7	119	10000
C200X100AAL	Silver	2.00	50.8	1.00	25.4	6	28	1000
C275X125AAL	Silver	2.75	69.9	1.25	31.8	6	18	1000
C850X1100AAL	Silver	8.50	215.9	11.00	279.4	1	1	25

Order number of labels required in multiples of Standard Package Quantity.

Non-Adhesive Polyester Network Labels

- Used to identify patch panels, faceplates, punchdown blocks and other systems hardware
- Die-cut labels designed to provide maximum aesthetic quality and appearance
- Temperature range: -10°F to 150°F (-23°C to 65°C)

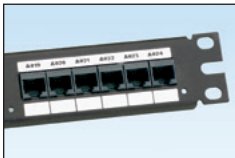


Part Number	Color	Width		Height		Application	Labels Per Row	Labels Per Sheet	Labels Per Pkg.
		In.	mm	In.	mm				
C150X030Y1J	White	1.50	38.1	0.30	7.6	3-port identifier	4	112	1000
C195X040Y1J	White	1.95	49.5	0.40	10.2	Single-gang faceplate	3	60	1000
C261X035Y1J	White	2.61	66.3	0.35	8.9	4-port identifier	2	48	1000
C282X030Y1J	White	2.82	71.6	0.30	7.6	4-port identifier	2	52	1000
C288X040Y1J	White	2.88	73.2	0.40	10.2	Double-gang faceplate	2	40	1000
C390X030Y1J	White	3.90	99.1	0.30	7.6	6-port identifier	2	48	1000
C750X050Y1J	White	7.50	190.5	0.50	12.7	110 block	1	16	500
C788X050Y1J	White	7.88	200.2	0.50	12.7	GP6™ System	1	16	500

Order number of labels required in multiples of Standard Package Quantity.

Polyolefin Network Labels

- Used to identify patch panels, faceplates, punchdown blocks, and other systems hardware
- Used to identify electrical and electronic components and devices
- Temperature range: -40°F to 180°F (-40°C to 82°C)



Part Number	Color	Width		Height		Type of Application	Labels Per Row	Labels Per Sheet	Labels Per Pkg.
		In.	mm	In.	mm				
C061X030FJJ	White	0.61	15.5	0.30	7.6	1-port identifier	13	325	5000
C125X030FJJ	White	1.25	31.8	0.30	7.6	2-port identifier	6	150	2500
C138X019FJJ	White	1.38	35.1	0.19	4.8	Module identifier	5	170	2500
C188X030FJJ	White	1.88	47.8	0.30	7.6	3-port identifier	4	100	1000
C200X100FJJ	White	2.00	50.8	1.00	25.4	General identifier	4	36	1000
C225X450FJJ	White	2.25	57.2	4.50	114.3		3	6	150
C252X030FJJ	White	2.52	64.0	0.30	7.6	4-port identifier	3	75	1000
C252X030FRJ	Blue	2.52	64.0	0.30	7.6		3	75	1000
C252X030FTJ	Green	2.52	64.0	0.30	7.6		3	75	1000
C261X030FJJ	White	2.61	66.3	0.30	7.6		3	75	1000
C315X030FJJ	White	3.15	80.0	0.30	7.6	5-port identifier	2	50	1000
C350X500FJJ	White	3.50	88.9	5.00	127.0	General identifier	2	4	100
C379X030FJJ	White	3.79	96.3	0.30	7.6	6-port identifier	2	50	1000
C500X700FJJ	White	5.00	127.0	7.00	177.8	General identifier	1	2	50
C700X250FJJ	White	7.00	177.8	2.50	63.5		1	4	100

Order number of labels required in multiples of Standard Package Quantity.

Easy-Mark™ Labeling Software

- Quickly and easily generate labels with Easy-Mark™ Labeling Software
- Market-specific labeling application tools assist in creation of identification solutions for data centers, network applications, panel shops, and construction and maintenance applications
- Easy-Mark™ saves time and money (up to 75%) with features such as WYSIWYG user interface, data import, symbol import, and pre-loaded formats
- Upgrades are available on the Panduit website under Support/Software, Firmware and Printers/Easy-Mark™ Labeling Software



- Site license available for up to five additional installs per Easy-Mark™ CD. Please contact Customer Service or your Panduit Distributor for additional information

System Requirements:

- 64 MB hard drive space and 64 MB RAM (256 MB RAM recommended)
- Windows 2000, XP, Vista, 7, 8 or 10
- Mouse or compatible pointing device
- Microsoft.NET Framework 2.0 or higher
- CD-ROM Drive or USB Port

Part Number	Description	Std Pkg Qty.	Std Pkg Qty.
PROG-EMCD3	Easy-Mark™ Labeling Software, CD-ROM.	1	10
PROG-EM2GO	Easy-Mark™ Portable Application, USB Flash Drive.	1	10

^Windows is a registered trademark of Microsoft Corp. in the United States and/or other countries.

CAD-Connect™ Labeling Software

- Facilitates quick and easy organization of identifiers from CAD for printing within Easy-Mark™ Labeling Software
- Easily capture and organize CAD data for future use and documentation
- Saves time and reduces errors by utilizing identifiers previously created in CAD files to eliminate manual entry of data into labeling software
- Compatible with full versions of AutoCAD* 2002 to 2016 and Visio^ version 2002 or newer
- Exports to alternative formats such as Excel^ (XLS) or Text (CSV) files for future use and documentation



- Upgrades are available on the Panduit website under Support/Software, Firmware and Printers/CAD-Connect Labeling Software

System Requirements:

- 64 MB hard drive space and 64 MB RAM (256 MB RAM recommended)
- Windows 2000, XP, Vista, 7, 8 or 10
- Mouse or compatible pointing device
- Microsoft.NET Framework 2.0 or higher
- CD-ROM Drive

Part Number	Description	Std. Pkg. Qty.	Std. Ctn. Qty.
PROG-CCCD	CAD-Connect™ Labeling Software, including Easy-Mark™ Labeling Software, CD-ROM.	1	10

*AutoCAD is a registered trademark of Autodesk, Inc.

^Visio, Windows, and Excel are registered trademarks of Microsoft Corp. in the United States and/or other countries.

For additional information or questions please call:

Customer Service – 800-777-3300

Technical Support for USA & Canada – 866-871-4571

Latin America – +52-33-3777-6000

Brazil – 5511-3613-2353

Europe – +31-0-546-580-452

Asia Pacific Region – 65-6379-6700

Japan – 81-3-6863-6060

Australia – 61-3-9794-9020



PANDUIT®

Panduit Corp.
World Headquarters
Tinley Park, IL 60487

cs@panduit.com
US and Canada: 800.777.3300
Europe, Middle East, and Africa:
44.20.8601.7200
Latin America: 52.33.3777.6000
Asia Pacific: 65.6305.7575

www.panduit.com