



Chipsmall Limited consists of a professional team with an average of over 10 year of expertise in the distribution of electronic components. Based in Hongkong, we have already established firm and mutual-benefit business relationships with customers from,Europe,America and south Asia,supplying obsolete and hard-to-find components to meet their specific needs.

With the principle of “Quality Parts,Customers Priority,Honest Operation,and Considerate Service”,our business mainly focus on the distribution of electronic components. Line cards we deal with include Microchip,ALPS,ROHM,Xilinx,Pulse,ON,Everlight and Freescale. Main products comprise IC,Modules,Potentiometer,IC Socket,Relay,Connector.Our parts cover such applications as commercial,industrial, and automotives areas.

We are looking forward to setting up business relationship with you and hope to provide you with the best service and solution. Let us make a better world for our industry!



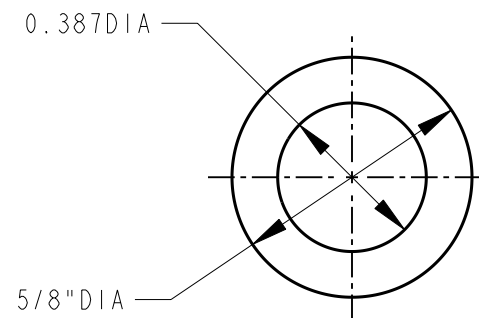
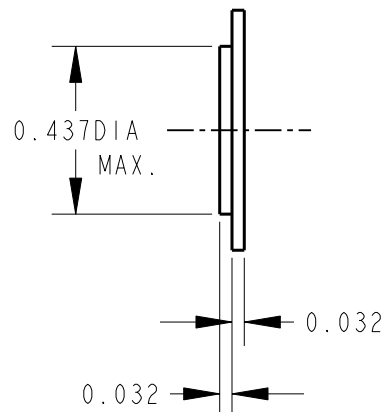
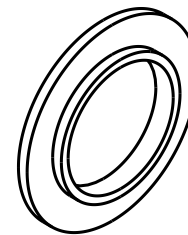
Contact us

Tel: +86-755-8981 8866 Fax: +86-755-8427 6832

Email & Skype: info@chipsmall.com Web: www.chipsmall.com

Address: A1208, Overseas Decoration Building, #122 Zhenhua RD., Futian, Shenzhen, China





NOTES:

MATERIAL: VULCANIZED FIBRE PER MIL-F-1148A TYPE C.
 FINISH: VARNISHED PER MIL-T-152A AND MIL-V-173B.

CUSTOMER DRAWING

CAD/CAM DWG. NO.

S1029_CD

SHEET 1 OF 1

★ STAR SYMBOL DENOTES CRITICAL DIMENSION, SEE S/C ENGINEERING STANDARD ES-0001

THIS DRAWING DESCRIBES A DESIGN CONSIDERED PROPRIETARY IN NATURE, DEVELOPED AND MANUFACTURED BY SWITCHCRAFT INC. AND IS RELEASED ON A CONFIDENTIAL BASIS FOR IDENTIFICATION PURPOSE ONLY.

UNLESS OTHERWISE SPECIFIED

- ALL DIMENSIONS IN INCHES
 TWO PLACE DECIMAL ±.01
 THREE PLACE DECIMAL ±.005
 FRACTIONAL DIMENSIONS ±1/64
 ANGLES ±1/8°
 ALL DIA'S CONCENTRIC WITHIN .005 T.I.R.
- REMOVE ALL BURRS
- MAKE NO DIMENSIONAL ALLOWANCES FOR APPLIED FINISHES, I.E., PLATING, PAINTING, ETC.
- HOLES ON THE SAME CENTERLINE MUST BE ALIGNED WITHIN ±.002

SIZE	WIDTH	MULT	LBS./M	TEMPER
------	-------	------	--------	--------

FINISH	SEE NOTES	MATERIAL	SEE NOTES
SPEC. NO.		SPEC. NO.	

FIRST USED ON	SCALE	Switchcraft®
	1 = 0.5	

DATE DRAWN	BY	CHK'D	APP'D
5-6-92	KJB	RB 5-8-92	GJ 5-11-92

NAME	PART NO.	ISSUE
ROUND, WASHER, SHOULDER (SWEDGED) PLAIN	S1029	B

ISSUE	CHANGE NO.	DATE	BY	APP'D
B	ECO #19704	3-24-95	RC	GHJ
A	FIRST DRAWN	5-6-92	KJB	GJ
REVISIONS				

DO NOT SCALE DRAWING

