



Chipsmall Limited consists of a professional team with an average of over 10 year of expertise in the distribution of electronic components. Based in Hongkong, we have already established firm and mutual-benefit business relationships with customers from,Europe,America and south Asia,supplying obsolete and hard-to-find components to meet their specific needs.

With the principle of “Quality Parts,Customers Priority,Honest Operation,and Considerate Service”,our business mainly focus on the distribution of electronic components. Line cards we deal with include Microchip,ALPS,ROHM,Xilinx,Pulse,ON,Everlight and Freescale. Main products comprise IC,Modules,Potentiometer,IC Socket,Relay,Connector.Our parts cover such applications as commercial,industrial, and automotives areas.

We are looking forward to setting up business relationship with you and hope to provide you with the best service and solution. Let us make a better world for our industry!



Contact us

Tel: +86-755-8981 8866 Fax: +86-755-8427 6832

Email & Skype: info@chipsmall.com Web: www.chipsmall.com

Address: A1208, Overseas Decoration Building, #122 Zhenhua RD., Futian, Shenzhen, China





8700 E. Thomas Road
 Scottsdale, AZ 85251
 Tel: (480) 941-6300
 Fax (480) 947-1503

S16-4148, e3
 and
S16-4150, e3
 Switching Diode Array



FEATURES

- 8 Diode Array
- SOIC 16 pin Surface Mount Package
- UL 94V-0 Flammability Classification
- RoHS compliant by adding "e3" suffix (S16-4148e3 or S16-4150e3)

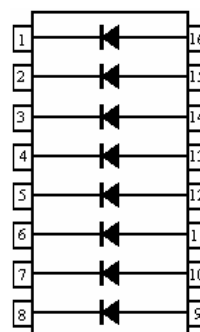
MECHANICAL and PACKAGING

- Molded SOIC 16 Pin
- Terminals: Tin-Lead or RoHS compliant annealed matte Tin
- Weight: 0.128 grams (approximate)
- Marking: Logo, device part number, date code
- Pin #1 defined by DOT on top of package
- Tape & Reel option: Standard per EIA-481-B
 13 inch reel 2,500 pieces (add "TR" suffix to part number)
- Carrier tube 48 pcs per (STANDARD)

MAXIMUM RATINGS

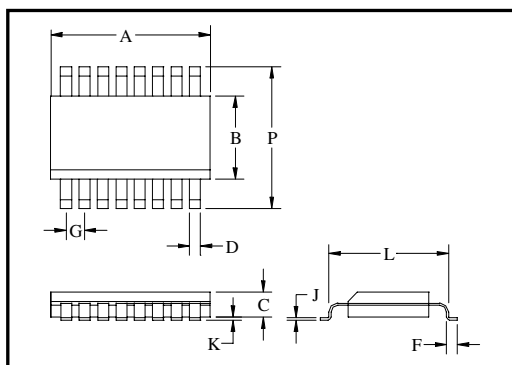
- Operating Temperatures: -55°C to +150°C
- Storage Temperature: -55°C to +150°C
- Forward Surge Current: 2.0 Amps (8.3 ms)
- Working Peak Reverse Voltage V_{RWM} : 75 V for S16-4148 and 50 V for S16-4150
- Continuous forward current I_F : 400 mA (each diode)
- Power dissipation (P_D): 1500 mW (total package)

CIRCUIT DIAGRAM



ELECTRICAL CHARACTERISTICS @ 25°C Unless otherwise specified

Part Number	$V_{BR} @ I_{BR}$ =100µA		I_R +25°C		I_R 150°C		CAP @ 0V pF		t_{rr}	
	V MIN	V MAX	µA MAX	V@Vr	µA MAX	@Vr	MAX pF	MAX pF	MAX (ns)	MAX (ns)
S16-4148	90		.025 .500	20 75	50 100	20 50	4.0		5.0	
S16-4150	75		.1	50	100	50	2.5		4.0	
Part Number	V_F @ $I_F = 1.0$ mA		V_F @ $I_F = 10$ mA		V_F @ $I_F = 50$ mA		V_F @ $I_F = 100$ mA		V_F @ $I_F = 200$ mA	
	V MIN	V MAX	V MIN	V MAX	V MIN	V MAX	V MIN	V MAX	V MIN	V MAX
S16-4148	-----	-----	-----	100	-----	-----	-----	1.20	-----	-----
S16-4150	0.54	0.62	0.66	0.74	0.76	0.86	0.82	0.92	0.87	1.00



DIM	INCHES		MILLIMETERS	
	MIN	MAX	MIN	MAX
A	0.385	0.398	9.09	10.10
B	0.150	0.158	3.81	4.01
C	0.053	0.069	1.35	1.75
D	0.011	0.021	0.28	0.53
F	0.016	0.050	0.41	1.27
G	0.050 BSC		1.27 BSC	
J	0.006	0.010	0.15	0.25
K	0.004	0.010	0.10	0.20
L	0.189	0.206	4.80	5.23
P	0.228	0.244	5.79	6.19