



Chipsmall Limited consists of a professional team with an average of over 10 year of expertise in the distribution of electronic components. Based in Hongkong, we have already established firm and mutual-benefit business relationships with customers from,Europe,America and south Asia,supplying obsolete and hard-to-find components to meet their specific needs.

With the principle of “Quality Parts,Customers Priority,Honest Operation,and Considerate Service”,our business mainly focus on the distribution of electronic components. Line cards we deal with include Microchip,ALPS,ROHM,Xilinx,Pulse,ON,Everlight and Freescale. Main products comprise IC,Modules,Potentiometer,IC Socket,Relay,Connector.Our parts cover such applications as commercial,industrial, and automotives areas.

We are looking forward to setting up business relationship with you and hope to provide you with the best service and solution. Let us make a better world for our industry!



Contact us

Tel: +86-755-8981 8866 Fax: +86-755-8427 6832

Email & Skype: info@chipsmall.com Web: www.chipsmall.com

Address: A1208, Overseas Decoration Building, #122 Zhenhua RD., Futian, Shenzhen, China



Customer Information Sheet

DRAWING No.: SI621-XX

SHEET 2 OF 2

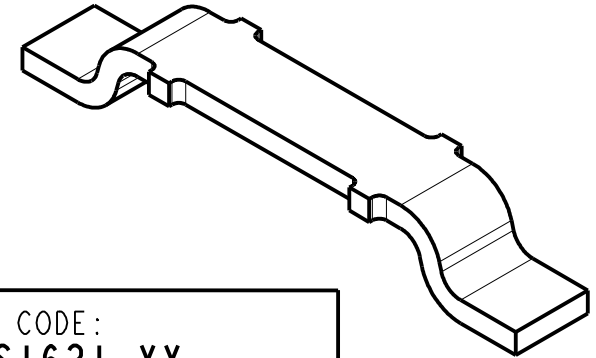
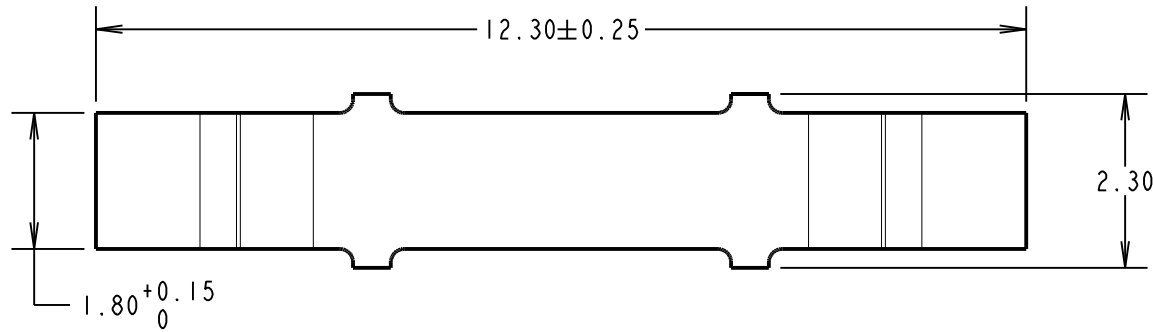
IF IN DOUBT - ASK



NOT TO SCALE

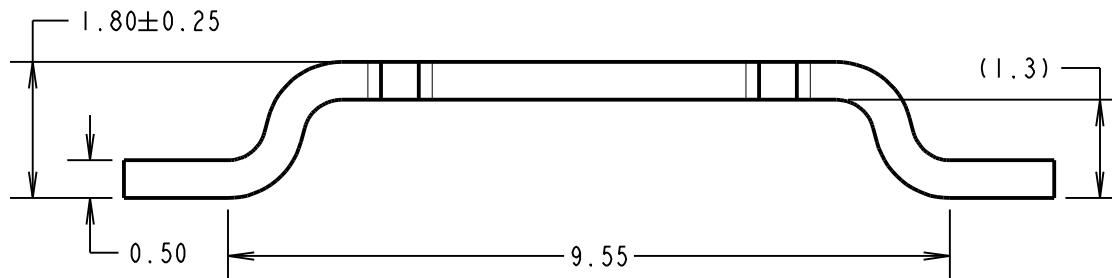
THIRD ANGLE PROJECTION

ALL DIMENSIONS IN mm



ORDER CODE:
SI621-XX

FINISH _____
06 = 4µ 90/10 TIN/LEAD OVER NICKEL
46 = 3µ 100% TIN OVER NICKEL



COMPONENT SPECIFICATION:

MATERIAL = BRASS CW508L 1/2 HARD

FINISH

06 = 4µ 90/10 TIN/LEAD

46 = 4µ 100% TIN

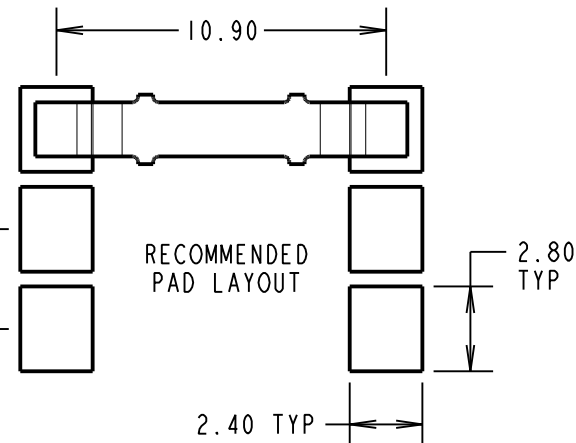
ELECTRICAL:

CURRENT RATING = 10A (30°C TEMP RISE)

CONTACT RESISTANCE = 20mΩ MAX

ENVIRONMENTAL:

OPERATING TEMPERATURE = -40°C TO +125°C



MSP	11	12.10.15	13113
NAME	ISS.	DATE	C/NOTE
APPROVED:		M. PERREN	
CHECKED:		S. BENNETT	
DRAWN:		W. J. BOURNE	
CUSTOMER REF.:			
ASSEMBLY DRG:			

- FOR TAPE AND REELED COMPONENT, SEE DRAWING SI62-XXR.
- PACKING: 1000 COMPONENTS PER BAG.

HARWIN

www.harwin.com
technical@harwin.com

THIS DRAWING AND ANY INFORMATION OR DESCRIPTIVE MATTER SET OUT HEREON ARE CONFIDENTIAL AND COPYRIGHT PROPERTY OF THE HARWIN GROUP AND MUST NOT BE DISCLOSED, LOANED, COPIED OR USED FOR MANUFACTURING, TENDERING OR FOR ANY OTHER PURPOSE WITHOUT THEIR WRITTEN PERMISSION.

TOLERANCES

X. = ±1mm
X.X = ±0.50mm
X.XX = ±0.10mm
X.XXX = ±0.01mm

ANGLES = ±5°
UNLESS STATED

MATERIAL:

BRASS CW508L

FINISH: SEE ORDER CODE

S/AREA:

mm²

TITLE:

SURFACE MOUNT JUMPER
(LOOSE)

DRAWING NUMBER:

SI621-XX

SHT
2 OF 2