



Chipsmall Limited consists of a professional team with an average of over 10 year of expertise in the distribution of electronic components. Based in Hongkong, we have already established firm and mutual-benefit business relationships with customers from,Europe,America and south Asia,supplying obsolete and hard-to-find components to meet their specific needs.

With the principle of “Quality Parts,Customers Priority,Honest Operation,and Considerate Service”,our business mainly focus on the distribution of electronic components. Line cards we deal with include Microchip,ALPS,ROHM,Xilinx,Pulse,ON,Everlight and Freescale. Main products comprise IC,Modules,Potentiometer,IC Socket,Relay,Connector.Our parts cover such applications as commercial,industrial, and automotives areas.

We are looking forward to setting up business relationship with you and hope to provide you with the best service and solution. Let us make a better world for our industry!



Contact us

Tel: +86-755-8981 8866 Fax: +86-755-8427 6832

Email & Skype: info@chipsmall.com Web: www.chipsmall.com

Address: A1208, Overseas Decoration Building, #122 Zhenhua RD., Futian, Shenzhen, China



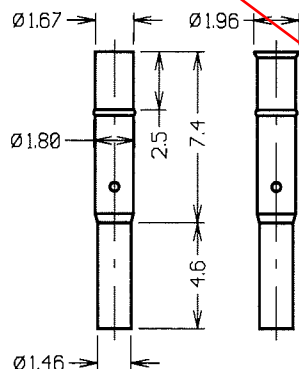
HARWIN PART NO.
S25-501

HARWIN PART NO.
S25-011

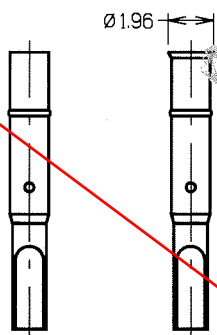
HARWIN PART NO.
S25-101

HARWIN PART NO.
S25-201

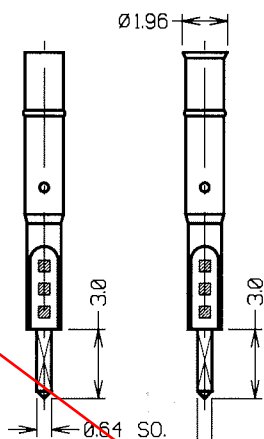
HARWIN PART NO.
S25-301



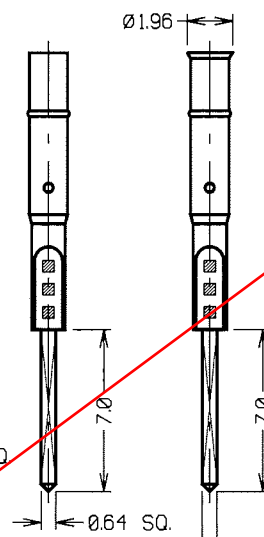
HARWIN PART NO.
S25-561



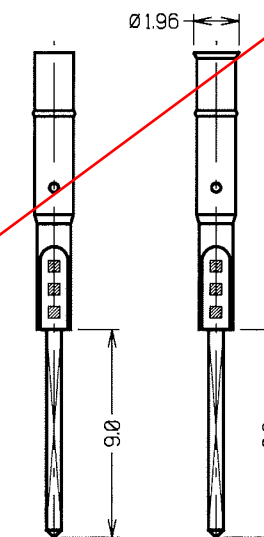
HARWIN PART NO.
S25-061



HARWIN PART NO.
S25-161



HARWIN PART NO.
S25-261



HARWIN PART NO.
S25-361

OBSOLETE

NOTES:

1. TO BE USED WITH PROBES P25-XX21.
2. MINIMUM CENTRES = 2.54mm.
3. MATERIAL = BRASS,
FINISH = GOLD PLATED.
4. RECOMMENDED MOUNTING HOLE =
Ø1.75-1.70mm.
5. ALL SPECIFICATIONS ARE STATED ON
THE PROBE DRAWING P25-XX21.
6. ALL DIMENSIONS ON S25-501 APPLY TO ALL SLEEVES
UNLESS OTHERWISE STATED.

ORDER CODE:
S25-XX1
SPRING PROBE
SLEEVE (SEE DRAWING)

CUSTOMER
INFORMATION
SHEET

1	14.01.97	----
ISS.	DATE	C/N
APPROVED:		
CHECKED:		
DRAWN: W. BOURNE		
CUSTOMER REF.		
ASSEMBLY DRG:		

HARWIN			
HARWIN INC U.S.A. TEL: (012) 285 0055 FAX: (012) 285 0056	HARWIN PLC U.K. TEL: 01705 370451 FAX: 01705 314590	HARWIN PTE SINGAPORE TEL: 65 7794909 FAX: 65 7793868	HARWIN CONNECTORS KOREA TEL: 822 521 0747 FAX: 822 521 0749

TOLERANCES

X. = ±1mm
X.X = ±0.25mm
X.XX = ±0.10mm
X.XXX = ±0.01mm
ANGLES = ±1°
UNLESS STATED

MATERIAL:
SEE NOTE 3

FINISH: SEE NOTE 3

S/AREA: mm'

TITLE:
2.54mm MIN. CENTRE TWO-PIECE
SPRING PROBE SLEEVE

DRAWING NUMBER:
S25-XX1

SHT
2
OF
2