



Chipsmall Limited consists of a professional team with an average of over 10 year of expertise in the distribution of electronic components. Based in Hongkong, we have already established firm and mutual-benefit business relationships with customers from,Europe,America and south Asia,supplying obsolete and hard-to-find components to meet their specific needs.

With the principle of “Quality Parts,Customers Priority,Honest Operation,and Considerate Service”,our business mainly focus on the distribution of electronic components. Line cards we deal with include Microchip,ALPS,ROHM,Xilinx,Pulse,ON,Everlight and Freescale. Main products comprise IC,Modules,Potentiometer,IC Socket,Relay,Connector.Our parts cover such applications as commercial,industrial, and automotives areas.

We are looking forward to setting up business relationship with you and hope to provide you with the best service and solution. Let us make a better world for our industry!



Contact us

Tel: +86-755-8981 8866 Fax: +86-755-8427 6832

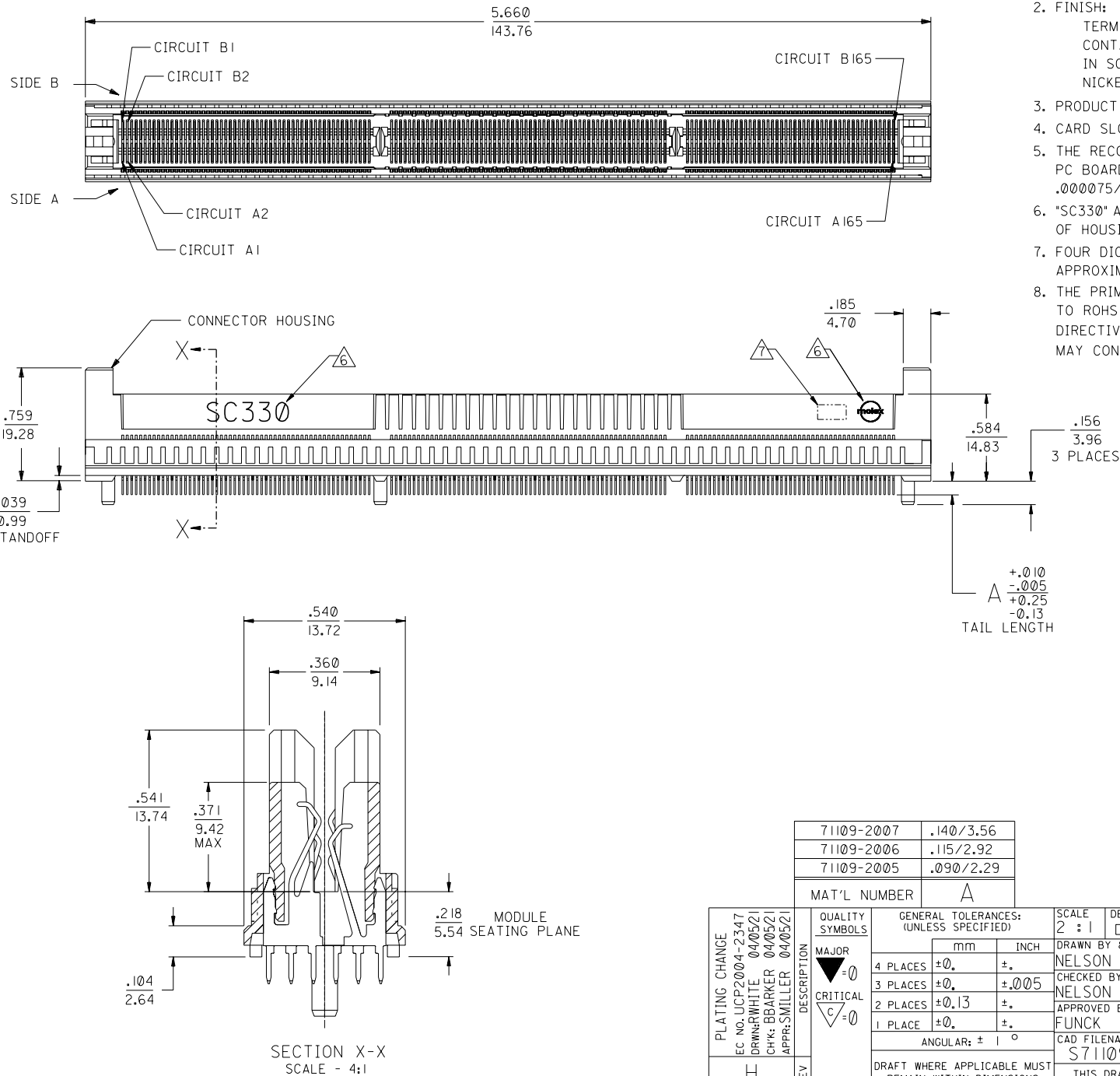
Email & Skype: info@chipsmall.com Web: www.chipsmall.com

Address: A1208, Overseas Decoration Building, #122 Zhenhua RD., Futian, Shenzhen, China



NOTES:

1. MATERIALS:
HOUSING - LCP, 30% GLASS FILLED, 94-V0, BLACK.
TERMINALS - PHOSPHOR BRONZE.
2. FINISH:
TERMINALS - .000030/.00076 MINIMUM GOLD IN THE CONTACT AREA AND .000075/.00019 MINIMUM TIN IN SOLDER TAIL AREA OVER .000050/.00013 MINIMUM NICKEL OVERALL.
3. PRODUCT SPECIFICATION PS-71109-9990 APPLIES.
4. CARD SLOT ACCEPTS .062 +.007/-.005 P.C. BOARD.
5. THE RECOMMENDED PLATING SPECIFICATION FOR THE MATING PC BOARD IS .000030/.00076 MINIMUM GOLD OVER .000075/.00019 MINIMUM NICKEL.
6. "SC330" AND MOLEX LOGO SHALL APPEAR ON BOTH SIDES OF HOUSING, AND LOCATED APPROXIMATELY AS SHOWN.
7. FOUR DIGIT DATE CODE (YR/WK) SHALL BE LOCATED APPROXIMATELY AS SHOWN.
8. THE PRIMARY SHIPPING CARTON WILL BE LABELED "COMPLIANT TO ROHS DIRECTIVE 2002/95/EC AND ELV ANNEX II OF DIRECTIVE 2000/53/EC". CARTONS WITHOUT THIS LABEL MAY CONTAIN PRODUCT WITH LEAD.



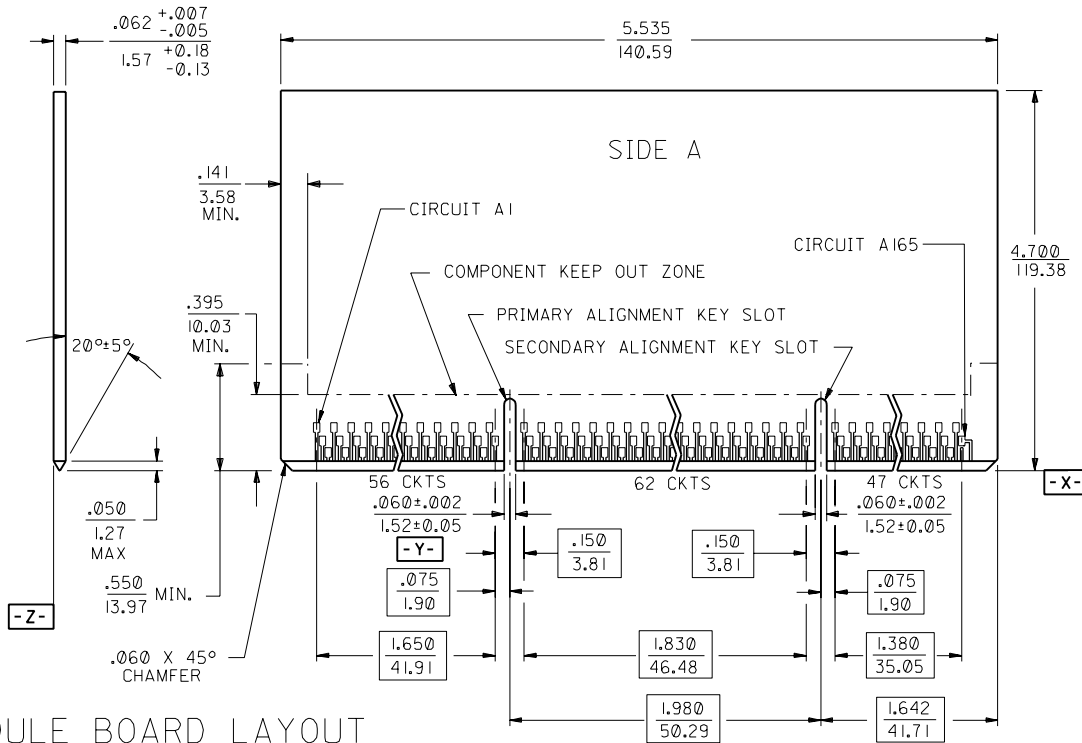
71109-2007	.140/3.56
71109-2006	.115/2.92
71109-2005	.090/2.29

MAT'L NUMBER	A
--------------	---

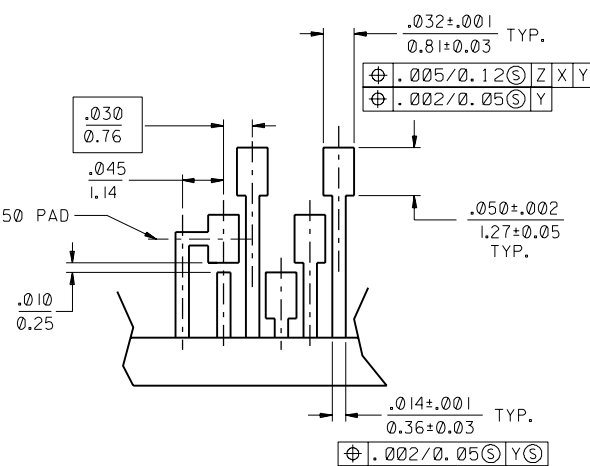
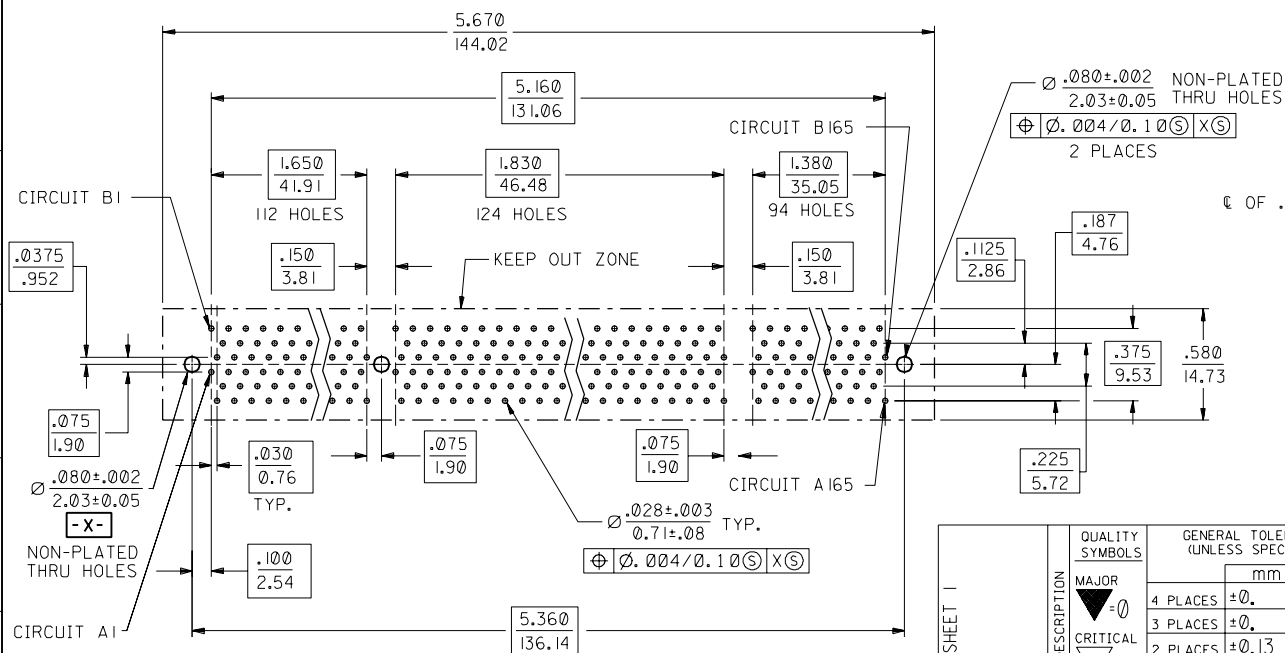
PLATING CHANGE EC NO. UCP2004-2347 DRWN: WHITE 04/05/21 CHK: BBARKER 04/05/21 APPR: SWILLER 04/05/21	DESCRIPTION MAJOR CRITICAL C/	REV H
------------------------------------------------------------------------------------------------------------------	----------------------------------------	----------

QUALITY SYMBOLS	GENERAL TOLERANCES: (UNLESS SPECIFIED)	SCALE 2 : 1	DESIGN UNITS <input type="checkbox"/> mm <input checked="" type="checkbox"/> INCH	THIRD ANGLE PROJECTION	DIMENSIONS: <input type="checkbox"/> mm <input checked="" type="checkbox"/> INCH <input type="checkbox"/> mm ONLY
MAJOR	mm	INCH	DRAWN BY & DATE	CHECKED BY & DATE	APPROVED BY & DATE
CRITICAL	4 PLACES ±0.	±.	NELSON 06/20/97	NELSON 06/20/97	FUNCK 06/20/97
	3 PLACES ±0.	±.005			
	2 PLACES ±0.13	±.			
	1 PLACE ±0.	±.			
	ANGULAR: ± 1 °				
	DRAFT WHERE APPLICABLE MUST REMAIN WITHIN DIMENSIONS				

SALES ASSEMBLY SC330 "HiSpec" CONNECTOR W/PLASTIC PEGS	MATERIAL NO. S7110966.S01	DRAWING NO. SD-71109-203	SHEET NO. 1 OF 2
THIS DRAWING CONTAINS INFORMATION THAT IS PROPRIETARY TO MOLEX INCORPORATED AND SHOULD NOT BE USED WITHOUT WRITTEN PERMISSION.			





RECOMMENDED MODULE BOARD LAYOUT



DETAIL Z

SCALE 10:1

SEE SHEET 1	DESCRIPTION	QUALITY SYMBOLS	GENERAL TOLERANCES: (UNLESS SPECIFIED)		SCALE 2 : 1	DESIGN UNITS <input type="checkbox"/> mm <input checked="" type="checkbox"/> INCH		THIRD ANGLE PROJECTION	<input type="checkbox"/> mm INCH	<input checked="" type="checkbox"/> INCH MM	<input type="checkbox"/> mm ONLY	REVISE ON CAD ONLY
		MAJOR = 0	mm	INCH	DRAWN BY & DATE NELSON 06/20/97		TITLE: SALES ASSEMBLY SC330 "HiSpec" CONNECTOR W/PLASTIC PEGS					
		CRITICAL C = 0	4 PLACES ±0.	±.	CHECKED BY & DATE NELSON 06/20/97							
		2 PLACES ±0.13	±.	APPROVED BY & DATE FUNCK 06/20/97		 MOLEX INCORPORATED						
		1 PLACE ±0.	±.	CAD FILENAME S7110966.S02							MATERIAL NO. SEE TABLE	DRAWING NO. SD-71109-203
REV		DRAFT WHERE APPLICABLE MUST REMAIN WITHIN DIMENSIONS				THIS DRAWING CONTAINS INFORMATION THAT IS PROPRIETARY TO MOLEX INCORPORATED AND SHOULD NOT BE USED WITHOUT WRITTEN PERMISSION.						SIZE C