



Chipsmall Limited consists of a professional team with an average of over 10 year of expertise in the distribution of electronic components. Based in Hongkong, we have already established firm and mutual-benefit business relationships with customers from,Europe,America and south Asia,supplying obsolete and hard-to-find components to meet their specific needs.

With the principle of "Quality Parts,Customers Priority,Honest Operation,and Considerate Service",our business mainly focus on the distribution of electronic components. Line cards we deal with include Microchip,ALPS,ROHM,Xilinx,Pulse,ON,Everlight and Freescale. Main products comprise IC,Modules,Potentiometer,IC Socket,Relay,Connector.Our parts cover such applications as commercial,industrial, and automotives areas.

We are looking forward to setting up business relationship with you and hope to provide you with the best service and solution. Let us make a better world for our industry!



Contact us

Tel: +86-755-8981 8866 Fax: +86-755-8427 6832

Email & Skype: info@chipsmall.com Web: www.chipsmall.com

Address: A1208, Overseas Decoration Building, #122 Zhenhua RD., Futian, Shenzhen, China

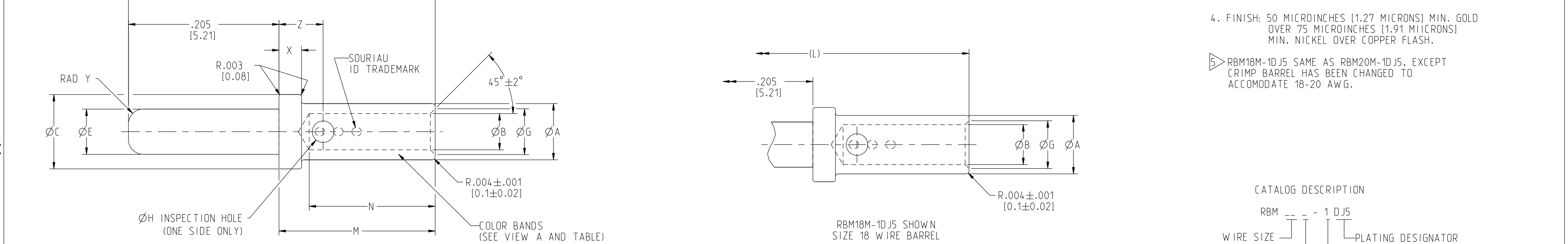


CATALOG NO.	BOEING PART NUMBER	MATING END SIZE	TABLE OF DIMENSIONS (AFTER PLATING)													COLOR BAND			WIRE ACCOMMODATE AWG	CRIMP TOOLING		
			ØA	ØB	ØC ±.0015 ±[0.038]	ØE ±.001 ±[0.03]	ØG	ØH ±.003 ±[0.08]	(L)	M ±.002 ±[0.05]	N	X ±.002 ±[0.05]	RAD Y	Z ±.003 ±[0.08]	A	B	C	SOURIAU		MIL-C-22520 CRIMP TOOL	POSITIONER	
RBM20M-1DJ5	S280W 555-920	16	.077 ±.001 [1.96 ±0.03]	.049 ±.001 [1.24 ±0.03]	.1015 [2.578]	.062 [1.57]	.062 ±.002 [1.57 ±0.05]	.029 [0.74]	.418 [10.62]	.213 [5.41]	.1715 ±.0145 [4.356 ±0.368]	.031 [0.79]	.020 [0.51]	.060 [1.52]	RED	RED	RED	20-24	MIL-C-22520/1-01	MIL-C-22520/1-02 RED		
RBM18M-1DJ5	S280W 555-918	16	.0796 ±.0008 [2.0218 ±0.020]	.0544 ±.0008 [1.382 ±0.020]			.065 ±.002 [1.65 ±0.05]							RED	WHITE	RED	18-20	MIL-C-22520/1-01	MIL-C-22520/1-02 RED			
RBM16V-1DJ5	S280W 555-916	14	.103 ±.002 [2.62 ±0.05]	.067 ±.001 [1.70 ±0.03]	.1315 [3.340]	.077 [1.96]	.085 [2.16]	.039 [0.99]	.501 [12.73]	.296 [7.52]	.2655 ±.0155 [6.744 ±0.394]	.046 [1.17]	.030 [0.76]	.076 [1.93]	BLUE	BLUE	BLUE	16-20	MIL-C-22520/1-01	MIL-C-22520/1-02 BLUE		

THIS DRAWING IS A CONTROLLED DOCUMENT FOR SOURIAU USA, INC. IT IS SUBJECT TO CHANGE WITHOUT NOTIFICATION. CONTACT THE DOCUMENT CONTROL CENTER FOR THE LATEST REVISION.

NOTES: UNLESS OTHERWISE SPECIFIED

- THESE CONTACTS CONFORM TO MIL-C-39029/1-... EXCEPT FOR COLOR BANDING.
- COLOR BANDS IDENTIFY THE WIRE SIZE ACCOMMODATION OF THIS ITEM WHICH CONFORMS TO BOEING STANDARD S280W555-9....
- MATERIAL: BRASS.
- FINISH: 50 MICROINCHES [1.27 MICRONS] MIN. GOLD OVER 75 MICROINCHES [1.91 MICRONS] MIN. NICKEL OVER COPPER FLASH.
- RBM18M-1DJ5 SAME AS RBM20M-1DJ5, EXCEPT CRIMP BARREL HAS BEEN CHANGED TO ACCOMMODATE 18-20 AWG.



CATALOG DESCRIPTION

RBM - - - 1 DJ5

WIRE SIZE

MATING END SIDE

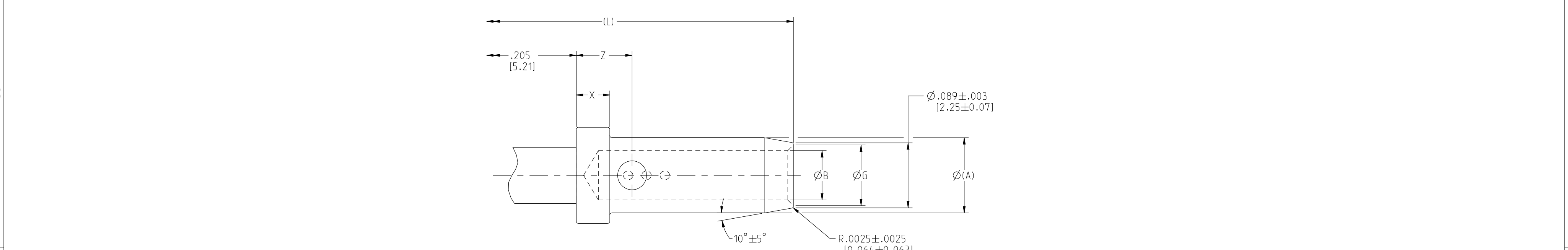
M: Ø.062

V: Ø.077

PLATING DESIGNATOR

VARIATION

-1: STANDARD



F	REVISED PER ECN 12121	RSK 01-17-14	SDH 01-17-14
E	REVISED PER ECN 12046	RSK 08-22-13	SDH 08-22-13
REV	DESCRIPTION	BY DATE	CHKD DATE

DRAWING TITLE: **CRIMP PIN CONTACTS**

CAT NO.: **RBM - - -1DJ5 (SEE TABLE)**

CAGE NO.: 09922 SIZE: C

CUSTOMER: **SOURIAU**

WWW.SOURIAU.COM

INTERPRET THIS DRAWING IN ACCORDANCE WITH ASME Y14.5M - 1994.

APPROVAL: DRAWN: RSK 07-24-13, CHKD: SDH 07-24-13, DSGN: RS 04-08-92, MFG: DH 07-24-13, QC: BB 07-24-13

DRAWING SCALE: 10:1

DRAWING NO.: SE94890

REV: F

1 OF 1

PRO-E