



Chipsmall Limited consists of a professional team with an average of over 10 year of expertise in the distribution of electronic components. Based in Hongkong, we have already established firm and mutual-benefit business relationships with customers from,Europe,America and south Asia,supplying obsolete and hard-to-find components to meet their specific needs.

With the principle of "Quality Parts,Customers Priority,Honest Operation,and Considerate Service",our business mainly focus on the distribution of electronic components. Line cards we deal with include Microchip,ALPS,ROHM,Xilinx,Pulse,ON,Everlight and Freescale. Main products comprise IC,Modules,Potentiometer,IC Socket,Relay,Connector.Our parts cover such applications as commercial,industrial, and automotives areas.

We are looking forward to setting up business relationship with you and hope to provide you with the best service and solution. Let us make a better world for our industry!



Contact us

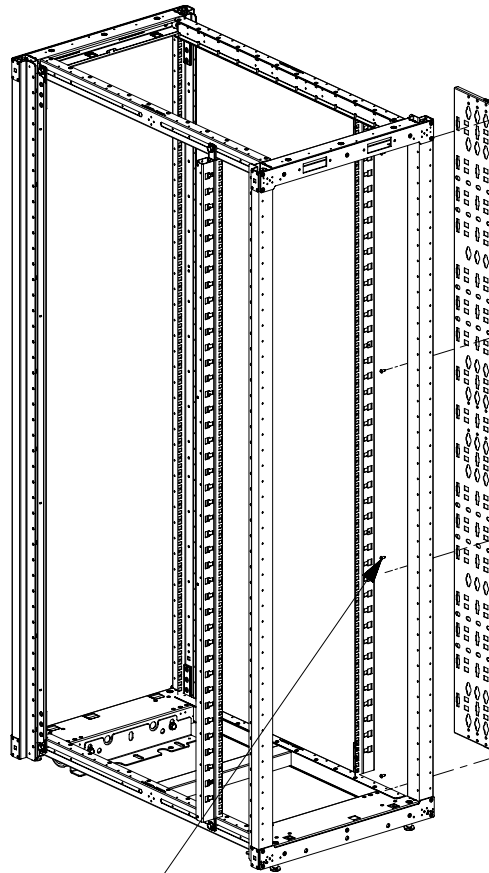
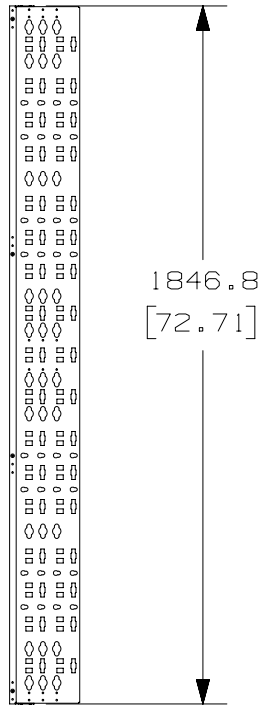
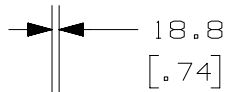
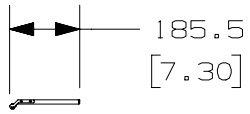
Tel: +86-755-8981 8866 Fax: +86-755-8427 6832

Email & Skype: info@chipsmall.com Web: www.chipsmall.com

Address: A1208, Overseas Decoration Building, #122 Zhenhua RD., Futian, Shenzhen, China



THIS COPY IS PROVIDED ON A RESTRICTED BASIS AND IS NOT TO BE USED IN ANY WAY DETRIMENTAL TO THE INTERESTS OF PANDUIT CORP.



M5 SCREW
4 PLCS

6" CABLE MANAGEMENT
BRACKET

- NOTES:
1. VISIT OUR ON-LINE CATALOG AT WWW.PANDUIT.COM FOR A LIST OF CURRENT PARTS APPLICABLE FOR USE WITH THIS PRODUCT.
 2. PRIMARY DIMENSIONS ARE IN MILLIMETERS (mm).
 3. PARTS SUPPLIED:
(1) - 6" CABLE MANAGEMENT BRACKET FL
(4) - M5 PAN HEAD SCREWS
 4. COMPATIBLE COMPONENTS: (PURCHASED SEPARATELY)
- S2LR
- S1LR
- S2DR
- S1DR

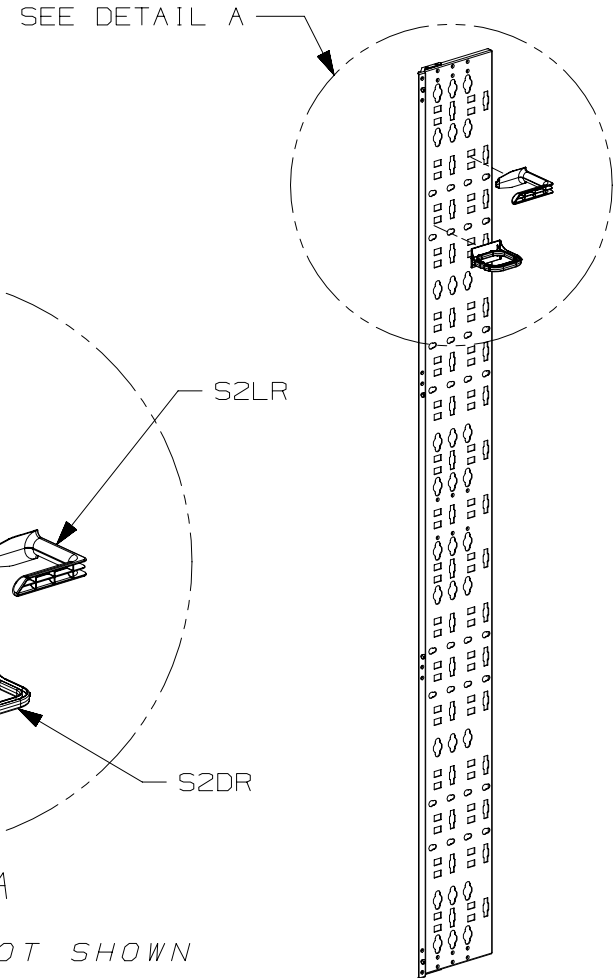
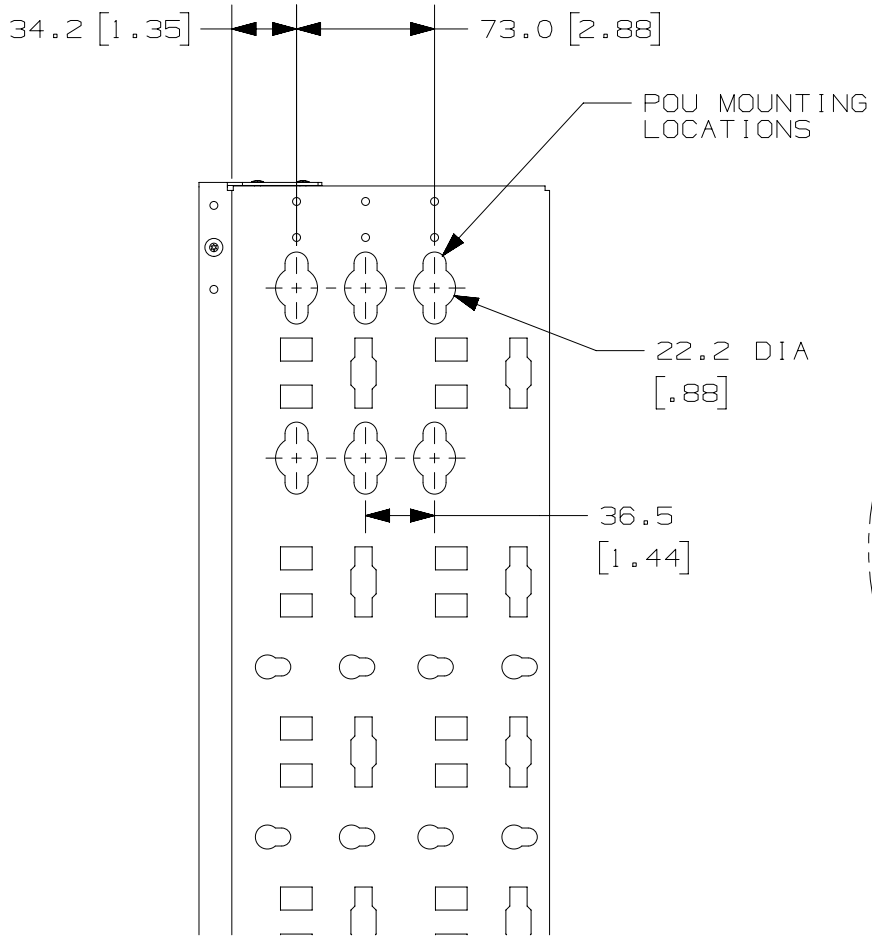
PANDUIT P/N	WEIGHT
S2BRK6	4.2 Kg/EACH 9.2 LBS/EACH

REV	DATE	BY	CHK	APR	DESCRIPTION	ECN
01B	6/15/17	MEX-JAGC	BRAP	BRAP	REVISED NOTES	V09001HQ
01A	12/18/13	MDCS	RCHA	JDWE	HEIGHT OF PART WAS 1896.8 [74.68]	11V231AD-DC
00A	9/26/13	PBS	RCHA	JDWE	RELEASED TO PRODUCTION	11V231AD-DC

TITLE		6" CABLE MANAGEMENT BRACKET FG (S2BRK6)	
ITEM REVISION NAME		CUSTOMER DRAWING	
DATASET FILE NAME		11V231AD-DC/01B	
DRAWING NUMBER:		11V231AD-DC	
MATERIAL:		N/A	
THIRD ANGLE PROJECTION			
DRAWN BY	DATE	CHK	SCALE
PBS	9/26/13	RCHA	NONE
SHT 1 OF 3			SIZE A

D10100DA/20

THIS COPY IS PROVIDED ON A RESTRICTED BASIS AND IS NOT TO BE USED IN ANY WAY DETRIMENTAL TO THE INTERESTS OF PANDUIT CORP.



01B	6/15/17	MEX-JAGC	BRAP	BRAP	SEE SHEET 1 OF 3 FOR REVISIONS	V09001HQ
01A	12/18/13	MDCS	RCHA	JDWE	SEE SHEET 1 OF 3 FOR REVISIONS	11V231AD-DC
00A	9/26/13	PBS	RCHA	JDWE	SEE SHEET 1 OF 3 FOR REVISIONS	11V231AD-DC
REV	DATE	BY	CHK	APR	DESCRIPTION	ECN

TITLE						6" CABLE MANAGEMENT BRACKET FG (S2BRK6)	
						CUSTOMER DRAWING	
ITEM REVISION NAME						11V231AD/01	
DATASET FILE NAME						11V231AD_DC/01B	
						MATERIAL:	
						N/A	
						DRAWING NUMBER:	
						11V231AD-DC	
						THIRD ANGLE PROJECTION	
DRAWN BY		DATE		CHK		SCALE	
PBS		9/26/13		RCHA		NONE	
						SHT 2 OF 3	
						SIZE	
						A	

D10100DA/20

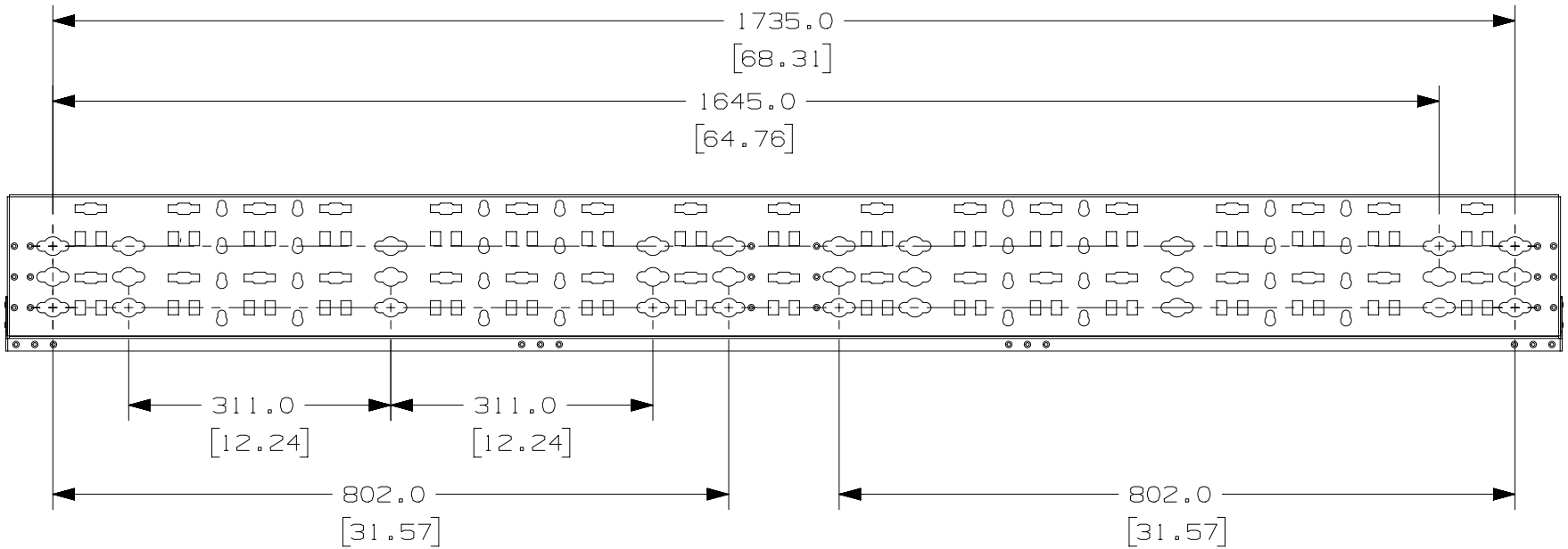
2

1

2

1

THIS COPY IS PROVIDED ON A RESTRICTED BASIS AND IS NOT TO BE USED IN ANY WAY DETRIMENTAL TO THE INTERESTS OF PANDUIT CORP.



REV	DATE	BY	CHK	APR	DESCRIPTION	ECN
01B	6/15/17	MEX-JAGC	BRAP	BRAP	SEE SHEET 1 OF 3 FOR REVISIONS	V09001HQ
01A	12/18/13	MDCS	RCHA	JDWE	SEE SHEET 1 OF 3 FOR REVISIONS	11V231AD-DC
00A	9/26/13	PBS	RCHA	JDWE	SEE SHEET 1 OF 3 FOR REVISIONS	11V231AD-DC

6" CABLE MANAGEMENT BRACKET FG (S2BRK6) CUSTOMER DRAWING			
ITEM REVISION NAME 11V231AD/01			
DATASET FILE NAME 11V231AD_DC/01B			
DRAWING NUMBER: 11V231AD-DC		MATERIAL: N/A	
DRAWN BY PBS		DATE 9/26/13	
CHK RCHA		SCALE NONE	
SHT 3 OF 3		SIZE A	

D10100DA/20