



Chipsmall Limited consists of a professional team with an average of over 10 year of expertise in the distribution of electronic components. Based in Hongkong, we have already established firm and mutual-benefit business relationships with customers from,Europe,America and south Asia,supplying obsolete and hard-to-find components to meet their specific needs.

With the principle of “Quality Parts,Customers Priority,Honest Operation,and Considerate Service”,our business mainly focus on the distribution of electronic components. Line cards we deal with include Microchip,ALPS,ROHM,Xilinx,Pulse,ON,Everlight and Freescale. Main products comprise IC,Modules,Potentiometer,IC Socket,Relay,Connector.Our parts cover such applications as commercial,industrial, and automotives areas.

We are looking forward to setting up business relationship with you and hope to provide you with the best service and solution. Let us make a better world for our industry!



## Contact us

Tel: +86-755-8981 8866 Fax: +86-755-8427 6832

Email & Skype: info@chipsmall.com Web: www.chipsmall.com

Address: A1208, Overseas Decoration Building, #122 Zhenhua RD., Futian, Shenzhen, China



# Customer Information Sheet

DRAWING No.: S409-XX / S410-XX

SHEET 3 OF 4

IF IN DOUBT - ASK

©

NOT TO SCALE

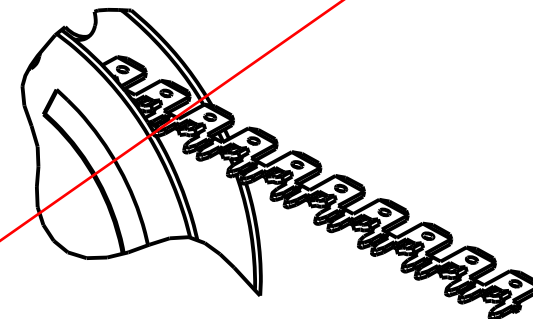
THIRD ANGLE PROJECTION

ALL DIMENSIONS IN mm

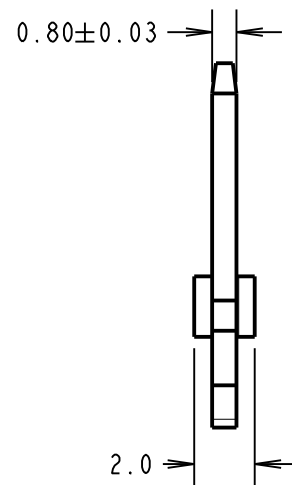
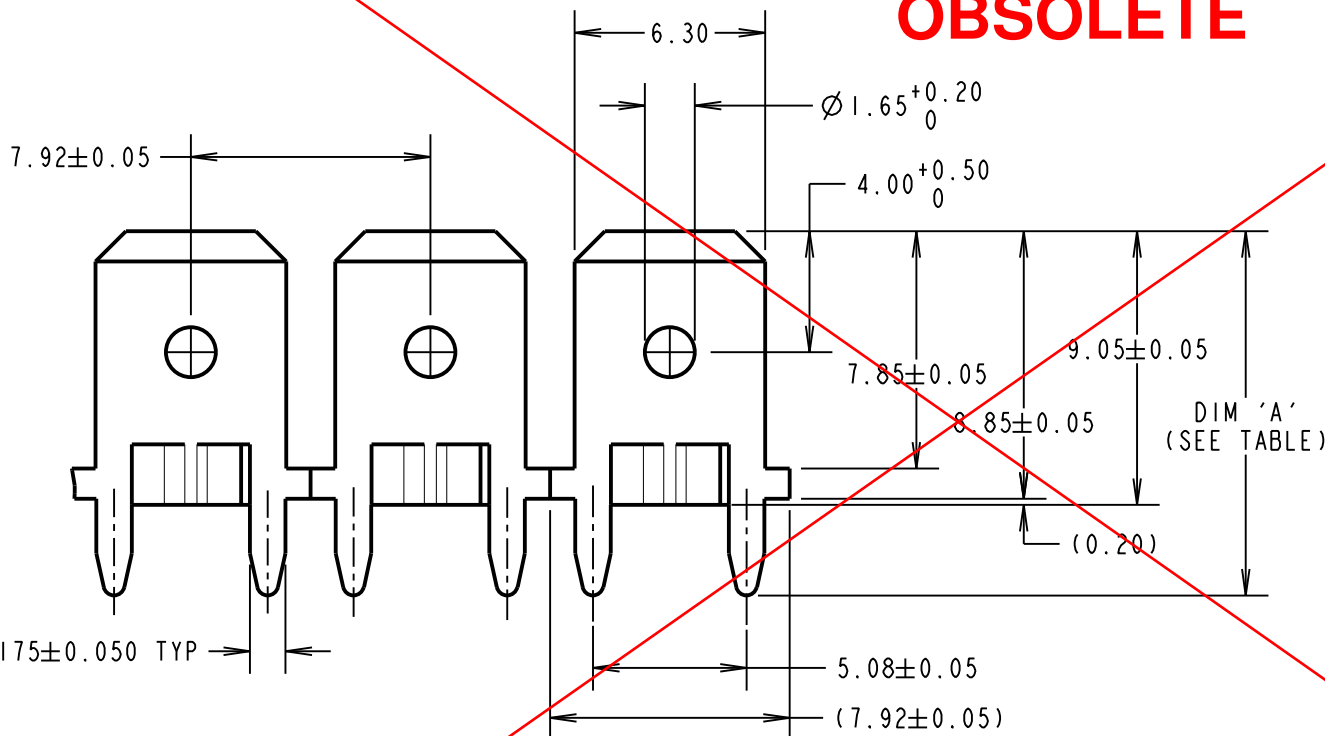
SEE NOTE 1



COMPONENTS SHOWN REELED  
READY FOR INSERTION



**OBSOLETE**



NOTE:

1. ANTI-ROCKING FEATURE.
2. QUANTITY OF TABS PER COIL = 10K.  
TOTAL WEIGHT PER COIL = 6.153kg.
3. RECOMMENDED MOUNTING HOLE SIZE =  $\varnothing 1.25 \pm 0.06\text{mm}$ .
4. PLATING THICKNESS =  $4\mu$  100% TIN.

PART No.	DIM 'A'	PCB THICKNESS
S409-XX	12.05	1.60
S410-XX	12.85	2.40

ORDER CODE:

**S4XX-46**

TYPE 09 OR 10  
(SEE TABLE)

SB	25	09.11.11	11532
NAME	ISS.	DATE	C/NOTE
APPROVED:		S.BENNETT	
CHECKED:		S.FLOWER	
DRAWN:		I. SANDY	
CUSTOMER REF.:			
ASSEMBLY DRG:			

**HARWIN**

www.harwin.com  
technical@harwin.com

THIS DRAWING AND ANY INFORMATION OR DESCRIPTIVE MATTER SET OUT HEREON ARE CONFIDENTIAL AND COPYRIGHT PROPERTY OF THE HARWIN GROUP AND MUST NOT BE DISCLOSED, LOANED, COPIED OR USED FOR MANUFACTURING, TENDERING OR FOR ANY OTHER PURPOSE WITHOUT THEIR WRITTEN PERMISSION.

TOLERANCES

X. =  $\pm 1\text{mm}$   
X.X =  $\pm 0.25\text{mm}$   
X.XX =  $\pm 0.10\text{mm}$   
X.XXX =  $\pm 0.01\text{mm}$   
ANGLES =  $\pm 5^\circ$   
UNLESS STATED

MATERIAL:

BRASS CW508L H150  
TO BS EN 1652 (CuZn37 HARD)

FINISH: SEE ABOVE

S/AREA: mm<sup>2</sup>

TITLE:

6.3mm BLADE VERTICAL  
REELED TAB TERMINAL

DRAWING NUMBER:

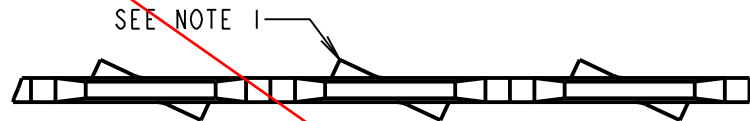
**S409-46 / S410-46**

SHT

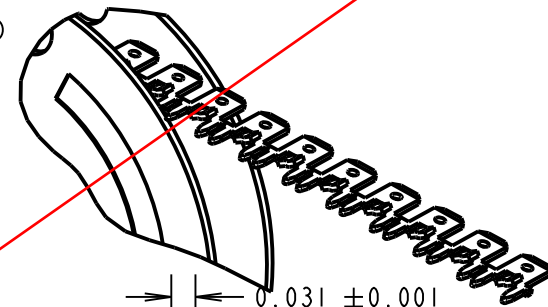
3 OF 4

# Customer Information Sheet

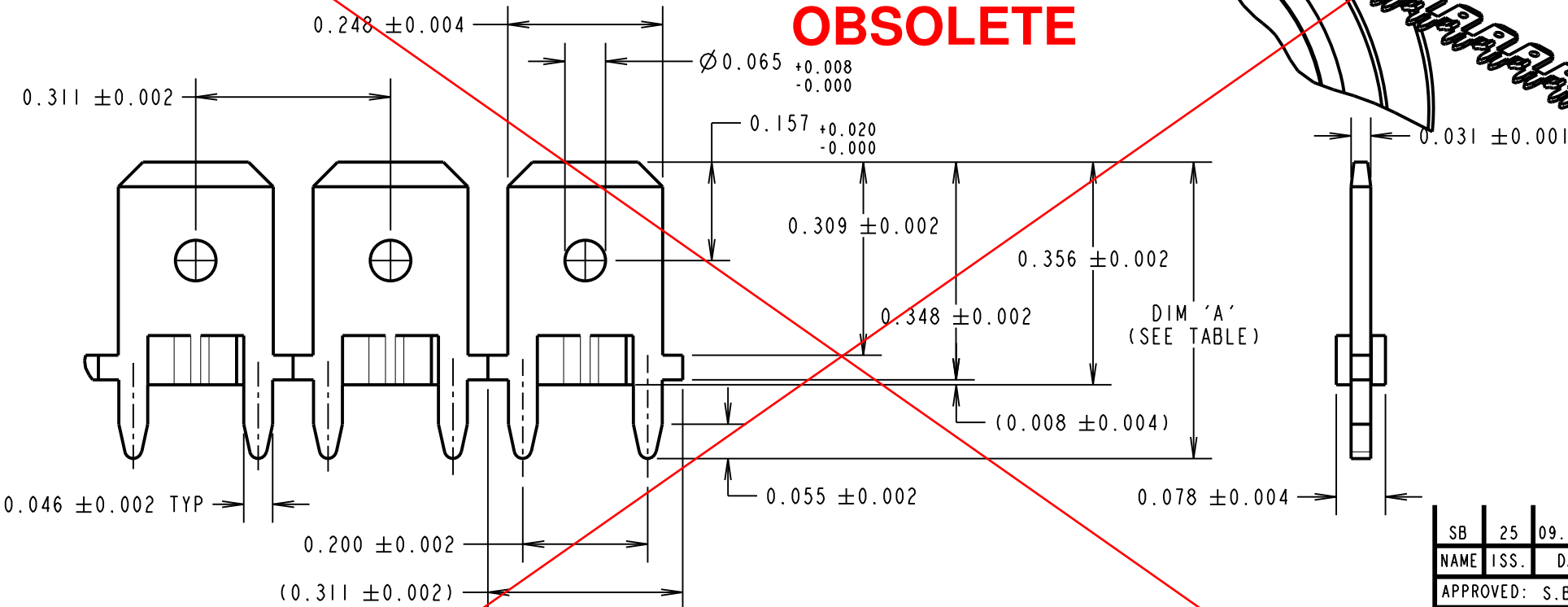
DRAWING No.: S409-XX / S410-XX SHEET 4 OF 4 IF IN DOUBT - ASK © NOT TO SCALE THIRD ANGLE PROJECTION ALL DIMENSIONS IN mm INCHES



COMPONENTS SHOWN REELED  
READY FOR INSERTION



**OBSOLETE**



**NOTE:**

- ANTI-ROCKING FEATURE.
- QUANTITY OF TABS PER COIL = 10K.  
TOTAL WEIGHT PER COIL = 6.153kg.
- RECOMMENDED MOUNTING HOLE SIZE =  $\varnothing 0.049 \pm 0.0024$ ".
- PLATING THICKNESS = 160µ" 100% TIN.

PART No.	DIM 'A'	PCB THICKNESS
S409-XX	0.475	0.063
S410-XX	0.506	0.094

ORDER CODE:  
**S4XX-46**  
TYPE 09 OR 10  
(SEE TABLE)

SB	25	09.11.11	11532
NAME	ISS.	DATE	C/NOTE
APPROVED: S.BENNETT			
CHECKED: S.FLOWER			
DRAWN: I. SANDY			
CUSTOMER REF.:			
ASSEMBLY DRG:			



www.harwin.com  
technical@harwin.com

THIS DRAWING AND ANY INFORMATION OR DESCRIPTIVE MATTER SET OUT HEREON ARE CONFIDENTIAL AND COPYRIGHT PROPERTY OF THE HARWIN GROUP AND MUST NOT BE DISCLOSED, LOANED, COPIED OR USED FOR MANUFACTURING, TENDERING OR FOR ANY OTHER PURPOSE WITHOUT THEIR WRITTEN PERMISSION.

**TOLERANCES**  
X = ±1mm  
X.X = ±0.25mm  
X.XX = ±0.10mm  
X.XXX = ±0.01mm  
ANGLES = ±5°  
UNLESS STATED

**MATERIAL:**  
BRASS CW508L H150  
TO BS EN 1652 (CuZn37 HARD)  
**FINISH:** SEE ABOVE  
**S/AREA:** mm<sup>2</sup>

**TITLE:**  
0.248" BLADE VERTICAL  
REELED TAB TERMINAL  
**DRAWING NUMBER:**  
**S409-46 / S410-46**

SHT  
4 OF 4