



Chipsmall Limited consists of a professional team with an average of over 10 year of expertise in the distribution of electronic components. Based in Hongkong, we have already established firm and mutual-benefit business relationships with customers from,Europe,America and south Asia,supplying obsolete and hard-to-find components to meet their specific needs.

With the principle of “Quality Parts,Customers Priority,Honest Operation,and Considerate Service”,our business mainly focus on the distribution of electronic components. Line cards we deal with include Microchip,ALPS,ROHM,Xilinx,Pulse,ON,Everlight and Freescale. Main products comprise IC,Modules,Potentiometer,IC Socket,Relay,Connector.Our parts cover such applications as commercial,industrial, and automotives areas.

We are looking forward to setting up business relationship with you and hope to provide you with the best service and solution. Let us make a better world for our industry!



Contact us

Tel: +86-755-8981 8866 Fax: +86-755-8427 6832

Email & Skype: info@chipsmall.com Web: www.chipsmall.com

Address: A1208, Overseas Decoration Building, #122 Zhenhua RD., Futian, Shenzhen, China



Customer Information Sheet

DRAWING No.: S509-XX

SHEET 3 OF 3

IF IN DOUBT - ASK

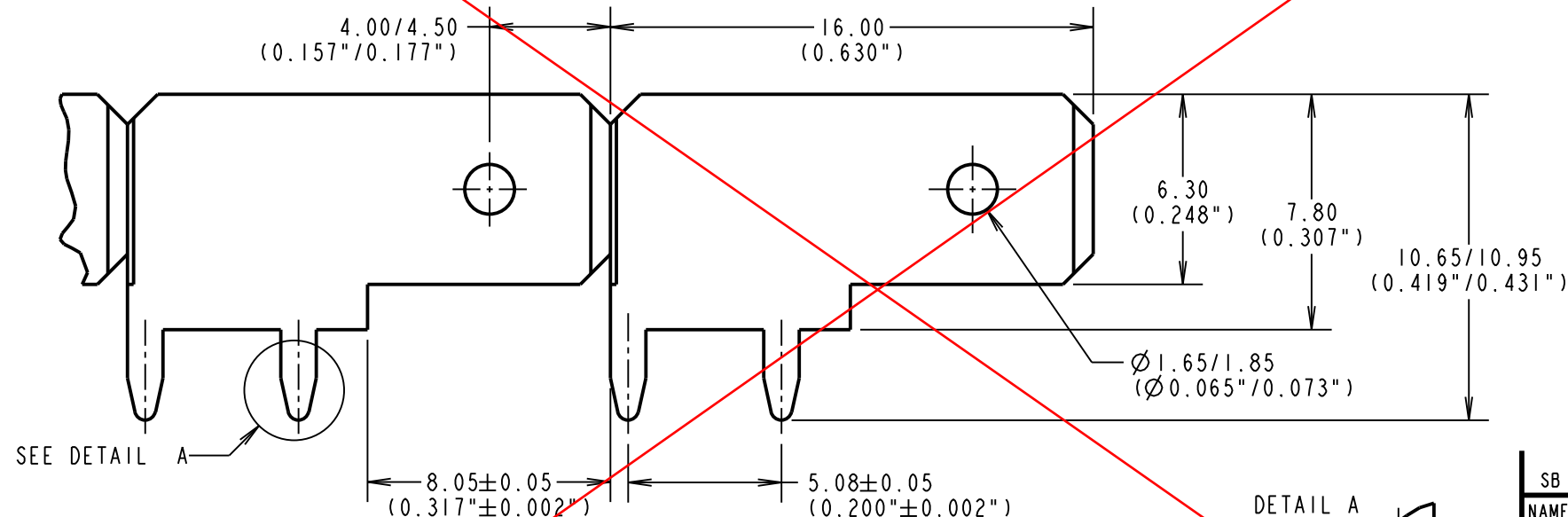
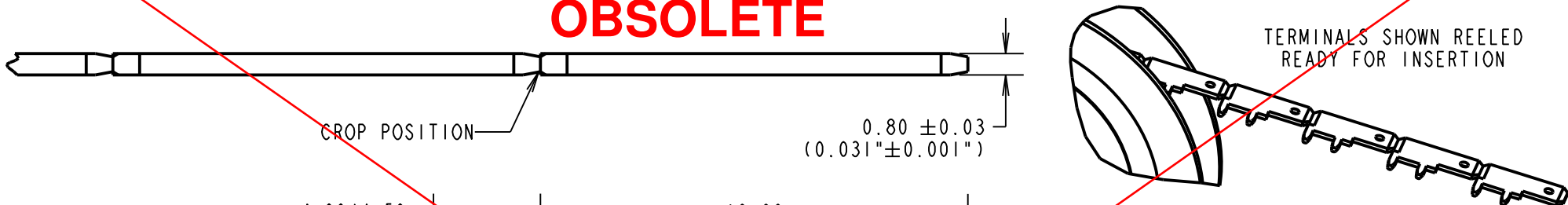
©

NOT TO SCALE

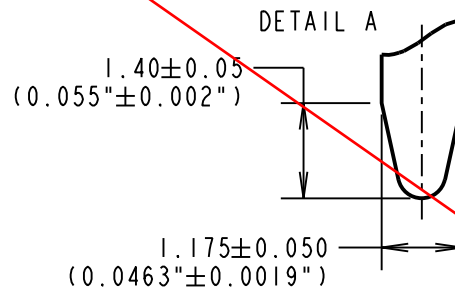
THIRD ANGLE PROJECTION

ALL DIMENSIONS IN mm

OBSOLETE



SEE DETAIL A



NOTES:

1. QUANTITY PER REEL = 8K.
REEL WEIGHT = 7.1kg (INCLUDING REEL).
2. RECOMMENDED MOUNTING HOLE SIZE = $\varnothing 1.25 \pm 0.06\text{mm}$ ($\varnothing 0.049" \pm 0.0024"$).
3. RECOMMENDED PCB THICKNESS = 1.60mm (0.063").
4. PLATING THICKNESS = 4 μ 100% TIN (160 μ " 100% TIN).
5. ALL TOLERANCES FOR INCHES ARE $\pm 0.004"$ UNLESS OTHERWISE STATED.

SB	18	16.11.11	11532
NAME	ISS.	DATE	C/NOTE
APPROVED: S.BENNETT			
CHECKED: S.FLOWER			
DRAWN: I. SANDY			
CUSTOMER REF.:			
ASSEMBLY DRG:			

HARWIN

www.harwin.com
technical@harwin.com

THIS DRAWING AND ANY INFORMATION OR DESCRIPTIVE MATTER SET OUT HEREON ARE CONFIDENTIAL AND COPYRIGHT PROPERTY OF THE HARWIN GROUP AND MUST NOT BE DISCLOSED, LOANED, COPIED OR USED FOR MANUFACTURING, TENDERING OR FOR ANY OTHER PURPOSE WITHOUT THEIR WRITTEN PERMISSION.

TOLERANCES
X. = ±1mm
X.X = ±0.25mm
X.XX = ±0.10mm
X.XXX = ±0.01mm
ANGLES = ±5°
UNLESS STATED

MATERIAL:
BRASS CW508L HARD TO
BS EN 1652
(CuZn37 HARD)

FINISH: SEE NOTES

S/AREA: mm²

TITLE:
6.3mm (0.248") BLADE
HORIZONTAL REELED TAB TERMINAL

DRAWING NUMBER:

S509-46

SHT
3
OF 3