



Chipsmall Limited consists of a professional team with an average of over 10 year of expertise in the distribution of electronic components. Based in Hongkong, we have already established firm and mutual-benefit business relationships with customers from,Europe,America and south Asia,supplying obsolete and hard-to-find components to meet their specific needs.

With the principle of “Quality Parts,Customers Priority,Honest Operation,and Considerate Service”,our business mainly focus on the distribution of electronic components. Line cards we deal with include Microchip,ALPS,ROHM,Xilinx,Pulse,ON,Everlight and Freescale. Main products comprise IC,Modules,Potentiometer,IC Socket,Relay,Connector.Our parts cover such applications as commercial,industrial, and automotives areas.

We are looking forward to setting up business relationship with you and hope to provide you with the best service and solution. Let us make a better world for our industry!



Contact us

Tel: +86-755-8981 8866 Fax: +86-755-8427 6832

Email & Skype: info@chipsmall.com Web: www.chipsmall.com

Address: A1208, Overseas Decoration Building, #122 Zhenhua RD., Futian, Shenzhen, China



Customer Information Sheet

DRAWING No.: S9091-46R

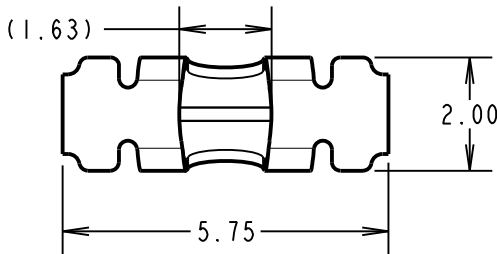
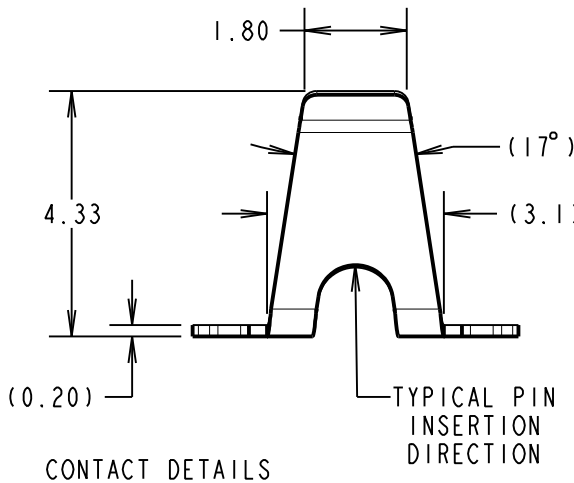
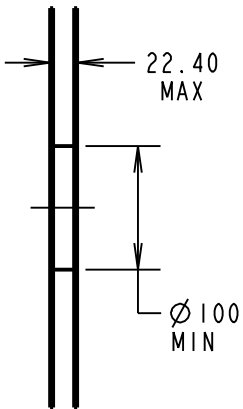
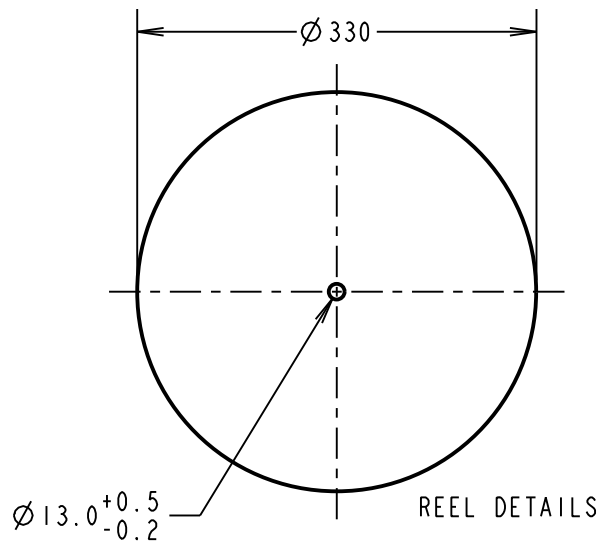
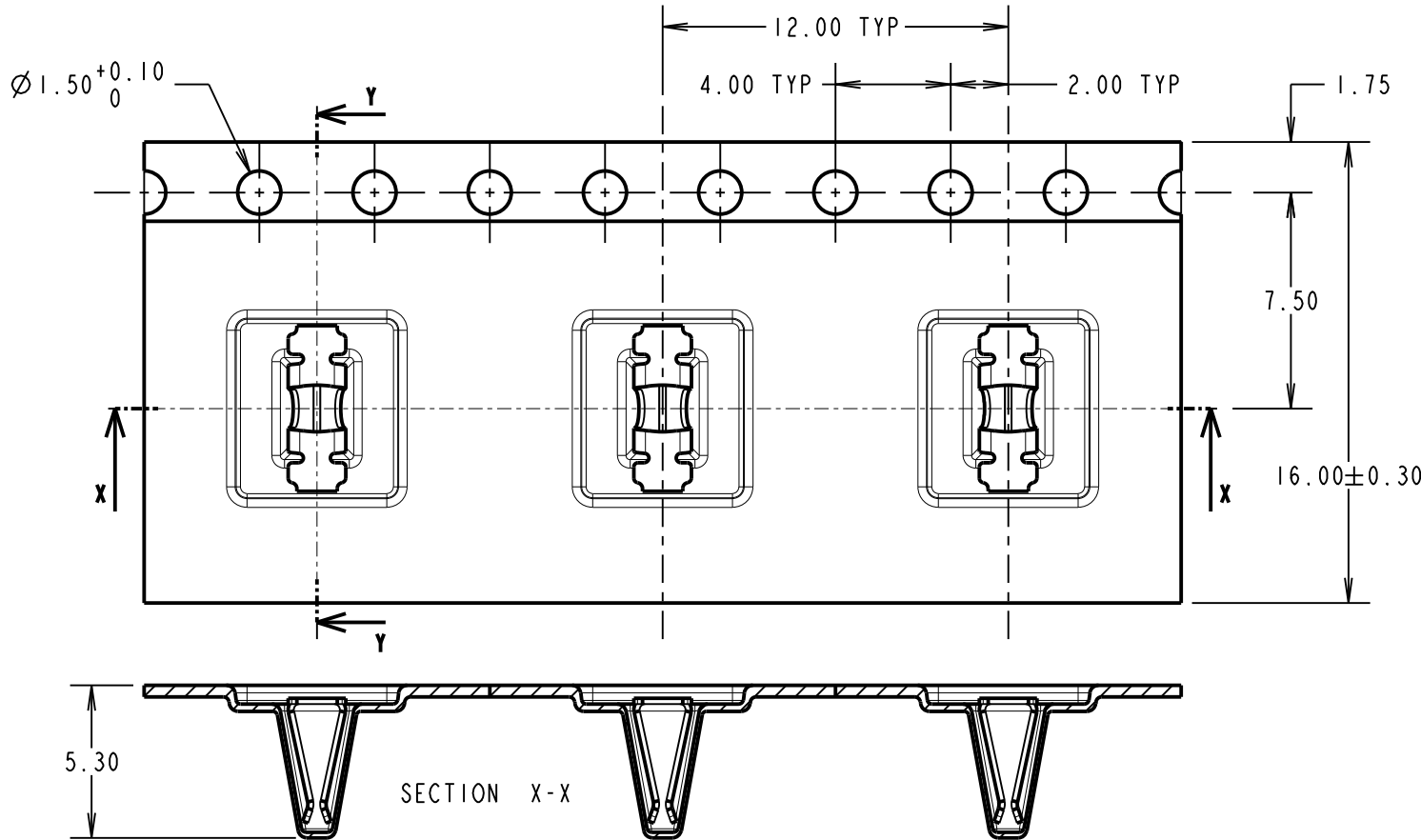
IF IN DOUBT - ASK

(C)

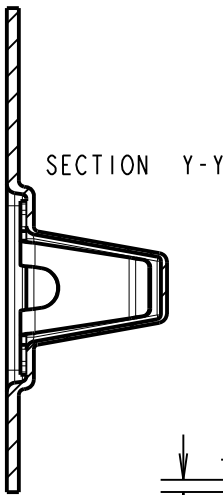
NOT TO SCALE

THIRD ANGLE PROJECTION

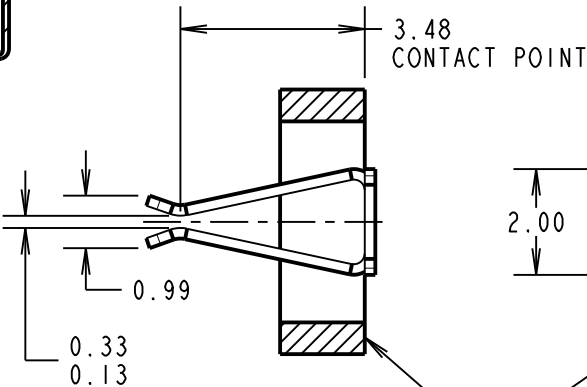
ALL DIMENSIONS IN mm



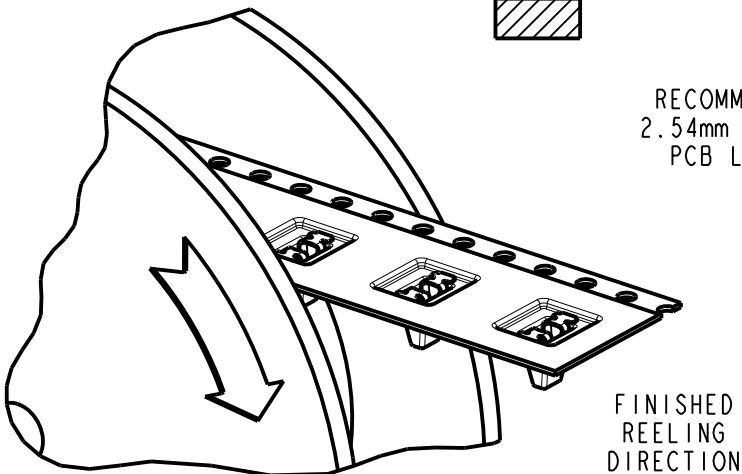
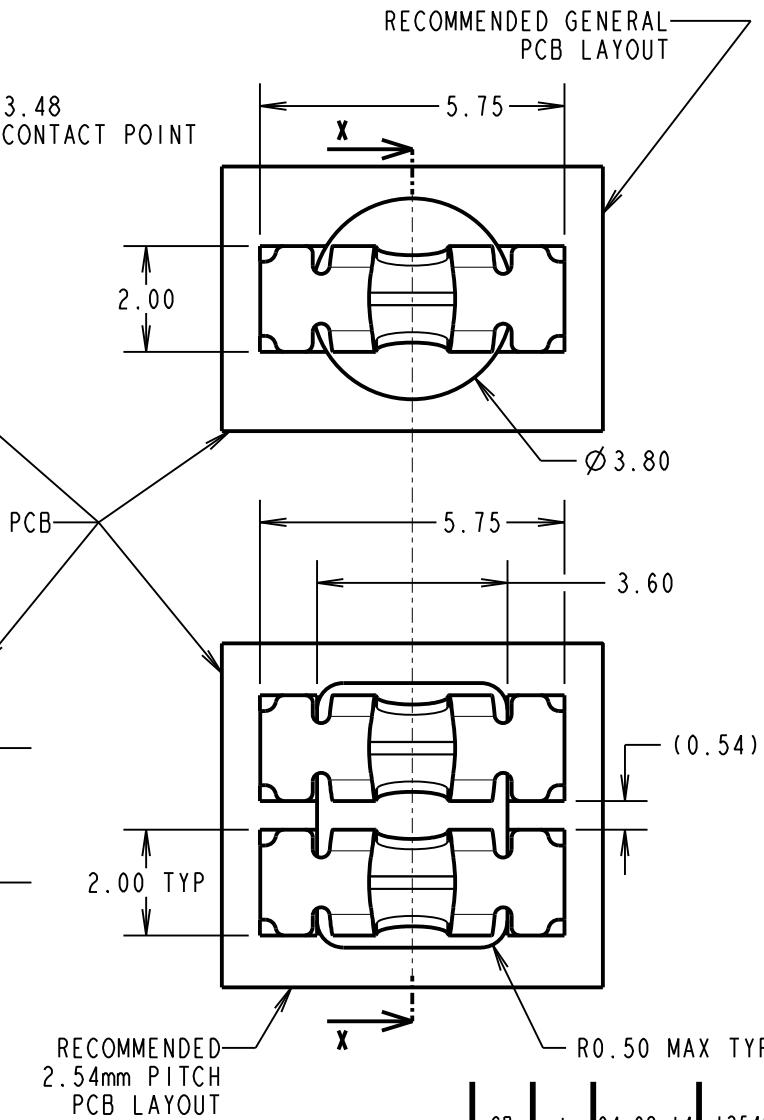
- NOTES:
1. QUANTITY OF COMPONENTS PER REEL = 900.
 2. THIS PRODUCT IS TAPED AND REELED IN GENERAL ACCORDANCE WITH EIA-481-2 (ELECTRONICS INDUSTRIES ASSOCIATION).
 3. RECOMMENDED MINIMUM PIN SIZE IS $\varnothing 0.80\text{mm}$ OR 0.80mm SQUARE. RECOMMENDED MAXIMUM PIN SIZE IS $\varnothing 1.50\text{mm}$ OR 1.50mm SQUARE.
 4. THROUGHOUT OPERATION, IT IS RECOMMENDED THAT THE MATING PIN IS KEPT CONSISTENT. THIS WILL REDUCE RISK OF PERFORMANCE CHANGES CAUSED BY PERMANENT SET FROM PREVIOUSLY USING A LARGER PIN.



SECTION Y-Y



SECTION X-X



FINISHED REELING DIRECTION

COMPONENT SPECIFICATION:
MATERIAL = PHOSPHOR BRONZE
FINISH = 4.0-5.0 μ 100% TIN OVER 2.0-2.5 μ NICKEL
ELECTRICAL:
CURRENT RATING = 5A
CONTACT RESISTANCE = 20m Ω MAX
DURABILITY = 25 CYCLES
MECHANICAL:
MAX INSERTION FORCE WITH $\varnothing 1.00\text{mm}$ PIN = 8.0N
MAX INSERTION FORCE WITH $\varnothing 1.50\text{mm}$ PIN = 17.0N
MIN WITHDRAWAL FORCE WITH $\varnothing 1.00\text{mm}$ PIN = 0.5N
MIN WITHDRAWAL FORCE WITH $\varnothing 1.50\text{mm}$ PIN = 1.0N
ENVIRONMENTAL:
OPERATING TEMPERATURE = -40°C TO +105°C

HARWIN

www.harwin.com
technical@harwin.com

THIS DRAWING AND ANY INFORMATION OR DESCRIPTIVE MATTER SET OUT HEREON ARE CONFIDENTIAL AND COPYRIGHT PROPERTY OF THE HARWIN GROUP AND MUST NOT BE DISCLOSED, LOANED, COPIED OR USED FOR MANUFACTURING, TENDERING OR FOR ANY OTHER PURPOSE WITHOUT THEIR WRITTEN PERMISSION.

TOLERANCES
X. = $\pm 1\text{mm}$
X.X = $\pm 0.25\text{mm}$
X.XX = $\pm 0.10\text{mm}$
X.XXX = $\pm 0.01\text{mm}$
ANGLES = $\pm 5^\circ$
UNLESS STATED

MATERIAL:

SEE ABOVE

FINISH:

SEE ABOVE

S/AREA:

mm²

TITLE:

SMT SOCKET CONTACT
IN TAPE AND REEL

DRAWING NUMBER:

S9091-46R

SB	I	04.08.14	12548
NAME	ISS.	DATE	C/NOTE
APPROVED:		S.BENNETT	
CHECKED:		S.FLOWER	
DRAWN:		S.BENNETT	
CUSTOMER REF.:			
ASSEMBLY DRG:			

SHT
2 OF 2