



Chipsmall Limited consists of a professional team with an average of over 10 year of expertise in the distribution of electronic components. Based in Hongkong, we have already established firm and mutual-benefit business relationships with customers from,Europe,America and south Asia,supplying obsolete and hard-to-find components to meet their specific needs.

With the principle of “Quality Parts,Customers Priority,Honest Operation,and Considerate Service”,our business mainly focus on the distribution of electronic components. Line cards we deal with include Microchip,ALPS,ROHM,Xilinx,Pulse,ON,Everlight and Freescale. Main products comprise IC,Modules,Potentiometer,IC Socket,Relay,Connector.Our parts cover such applications as commercial,industrial, and automotives areas.

We are looking forward to setting up business relationship with you and hope to provide you with the best service and solution. Let us make a better world for our industry!



Contact us

Tel: +86-755-8981 8866 Fax: +86-755-8427 6832

Email & Skype: info@chipsmall.com Web: www.chipsmall.com

Address: A1208, Overseas Decoration Building, #122 Zhenhua RD., Futian, Shenzhen, China



Customer Information Sheet

DRAWING No.: S9101-46

SHEET 2 OF 2

IF IN DOUBT - ASK

©

NOT TO SCALE

THIRD ANGLE PROJECTION

ALL DIMENSIONS IN mm

NOTES:

1. QUANTITY OF COMPONENTS PER REEL = 800.
2. TAPE MUST HAVE A MINIMUM OF 400mm LEADER AND A MINIMUM OF 160mm TRAILER.
3. THIS PRODUCT IS TAPED AND REELED IN GENERAL ACCORDANCE WITH EIA-481-2 (ELECTRONICS INDUSTRIES ASSOCIATION).
4. MAX PERMISSIBLE BURR AFTER CROP IS 0.05mm AND SHOULD BE ON NOTED FACE.
5. RECOMMENDED MINIMUM PIN SIZE IS $\varnothing 1.10$ OR 1.10 SQUARE. RECOMMENDED MAXIMUM PIN SIZE IS $\varnothing 1.80$ OR 1.40 SQUARE.
6. REVISED DIMENSION IS FOR THE LIFE OF EXISTING TOOL ONLY.

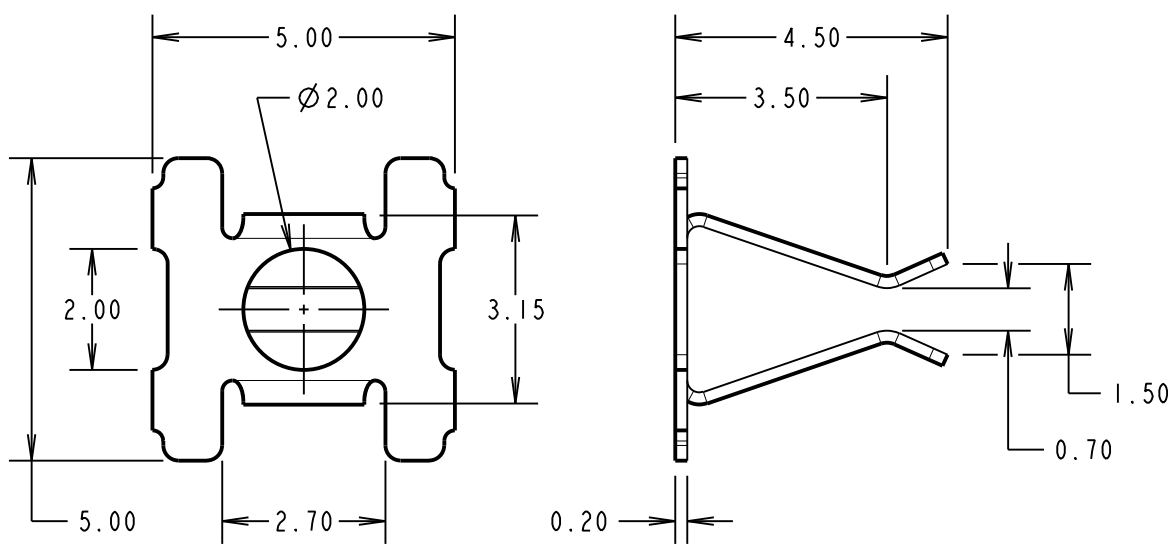
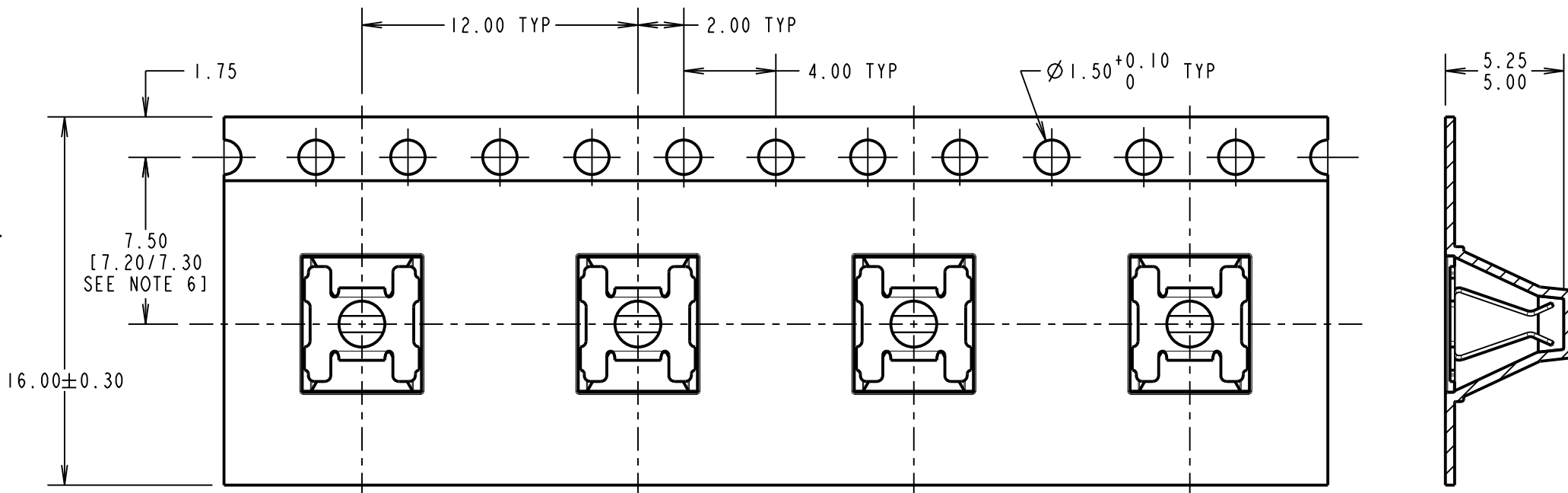
COMPONENT SPECIFICATION:

MATERIAL:
PHOSPHOR BRONZE

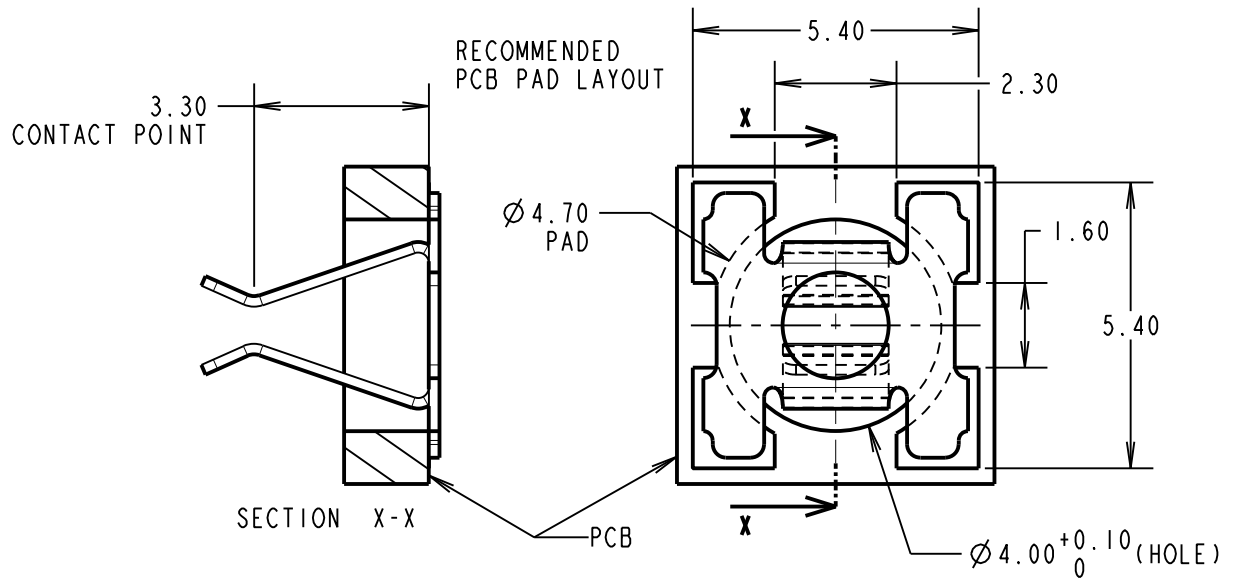
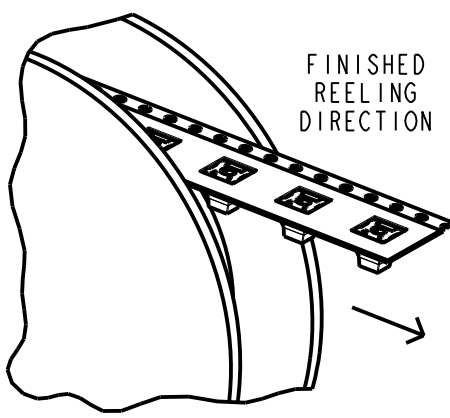
FINISH:
4 μ MIN 100% TIN OVER 2 μ NICKEL

ELECTRICAL:
CURRENT RATING = 9A MAX WITH A $\varnothing 1.10$ mm PIN
CONTACT RESISTANCE (BEFORE CYCLING) = 2.67m Ω
CONTACT RESISTANCE (50 CYCLES) = 2.67m Ω
DURABILITY = 100 OPERATIONS

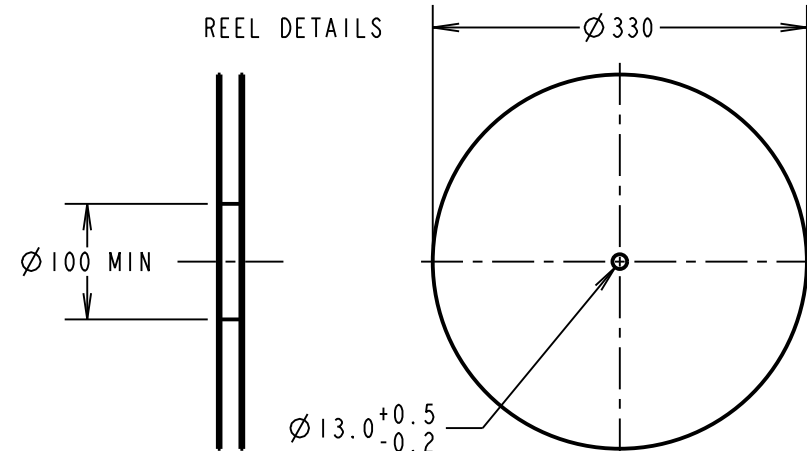
ENVIRONMENTAL:
OPERATING TEMPERATURE = -40°C TO +105°C
MAX INSERTION FORCE WITH $\varnothing 1.10$ mm PIN = 2.8N
MAX INSERTION FORCE WITH $\varnothing 1.80$ mm PIN = 4.5N
MIN WITHDRAWAL FORCE WITH $\varnothing 1.10$ mm PIN = 0.3N
MIN WITHDRAWAL FORCE WITH $\varnothing 1.80$ mm PIN = 0.5N
FOR COMPLETE SPECIFICATION, SEE HARWIN TEST REPORT SUMMARY HT007XX (LATEST ISSUE).



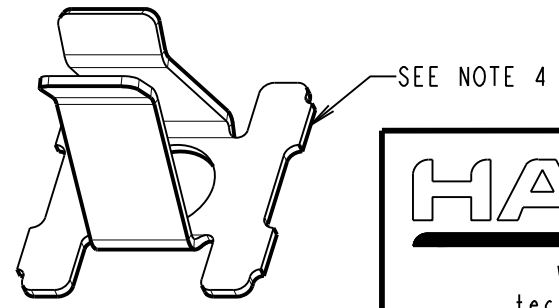
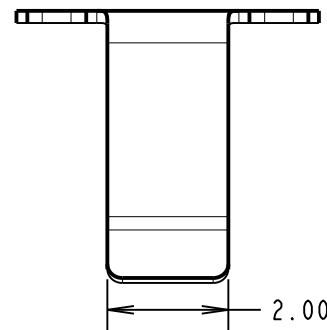
COMPONENT DIMENSIONS



REEL DETAILS



SB	4	03.06.14	12346
NAME	ISS.	DATE	C/NOTE
APPROVED: S.BENNETT			
CHECKED: M.PLESTED			
DRAWN: S.FLOWER			
CUSTOMER REF.:			
ASSEMBLY DRG:			



HARWIN

www.harwin.com
technical@harwin.com

THIS DRAWING AND ANY INFORMATION OR DESCRIPTIVE MATTER SET OUT HEREON ARE CONFIDENTIAL AND COPYRIGHT PROPERTY OF THE HARWIN GROUP AND MUST NOT BE DISCLOSED, LOANED, COPIED OR USED FOR MANUFACTURING, TENDERING OR FOR ANY OTHER PURPOSE WITHOUT THEIR WRITTEN PERMISSION.

TOLERANCES
X. = ±1mm
X.X = ±0.25mm
X.XX = ±0.10mm
X.XXX = ±0.01mm
ANGLES = ±5°
UNLESS STATED

MATERIAL:
SEE ABOVE

FINISH:

S/AREA: mm²

TITLE:
SMT CONTACT CLIP
IN TAPE & REEL

DRAWING NUMBER:
S9101-46R