



Chipsmall Limited consists of a professional team with an average of over 10 year of expertise in the distribution of electronic components. Based in Hongkong, we have already established firm and mutual-benefit business relationships with customers from,Europe,America and south Asia,supplying obsolete and hard-to-find components to meet their specific needs.

With the principle of “Quality Parts,Customers Priority,Honest Operation,and Considerate Service”,our business mainly focus on the distribution of electronic components. Line cards we deal with include Microchip,ALPS,ROHM,Xilinx,Pulse,ON,Everlight and Freescale. Main products comprise IC,Modules,Potentiometer,IC Socket,Relay,Connector.Our parts cover such applications as commercial,industrial, and automotives areas.

We are looking forward to setting up business relationship with you and hope to provide you with the best service and solution. Let us make a better world for our industry!



Contact us

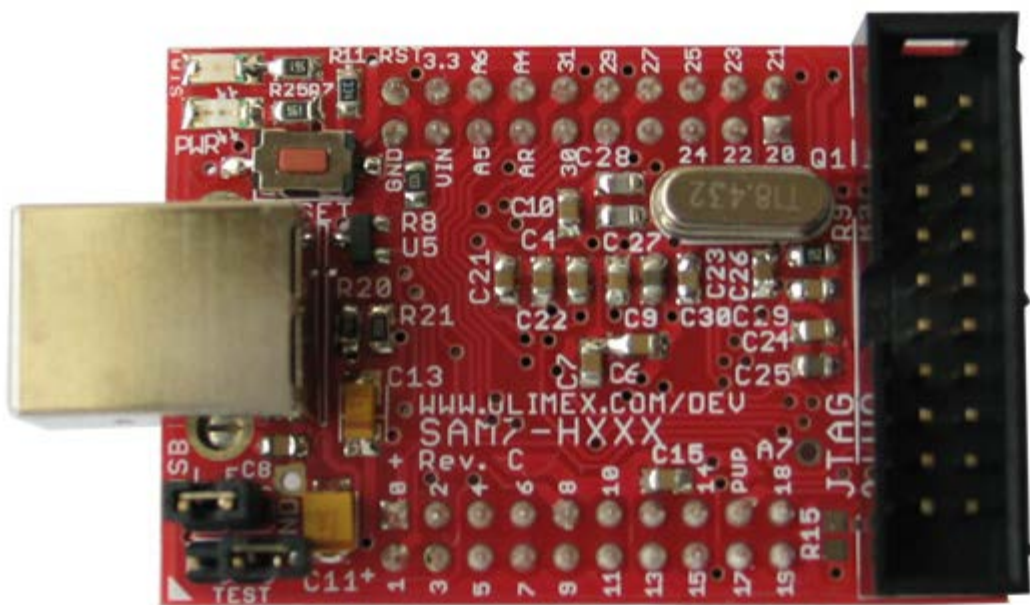
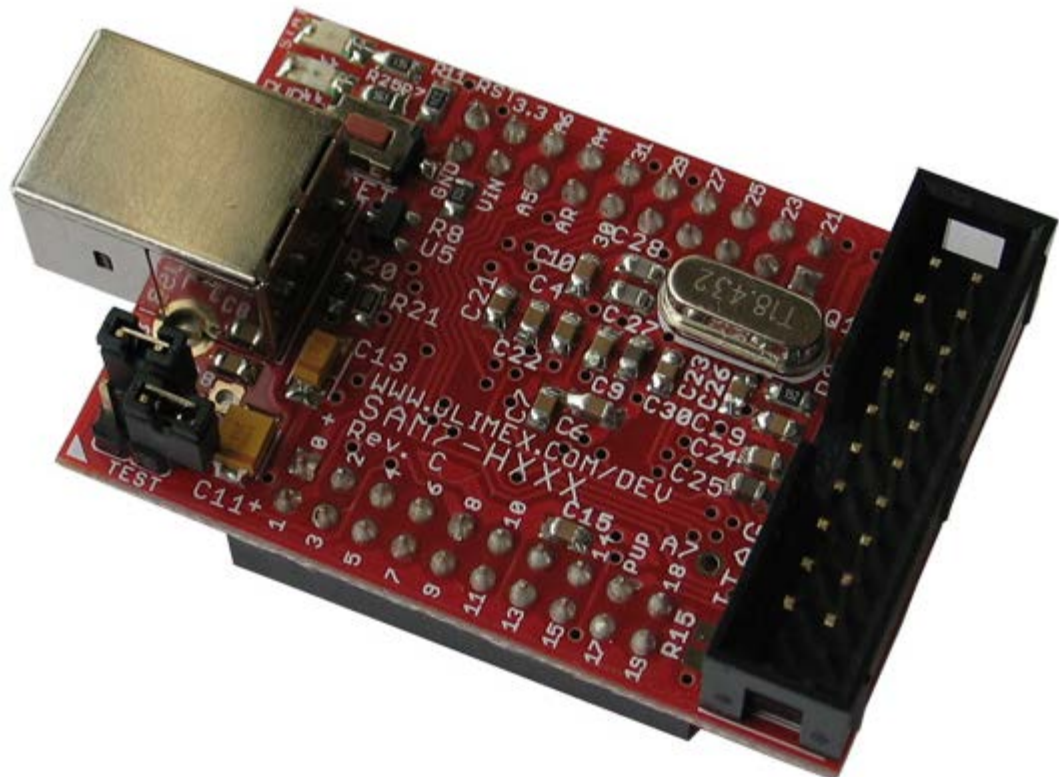
Tel: +86-755-8981 8866 Fax: +86-755-8427 6832

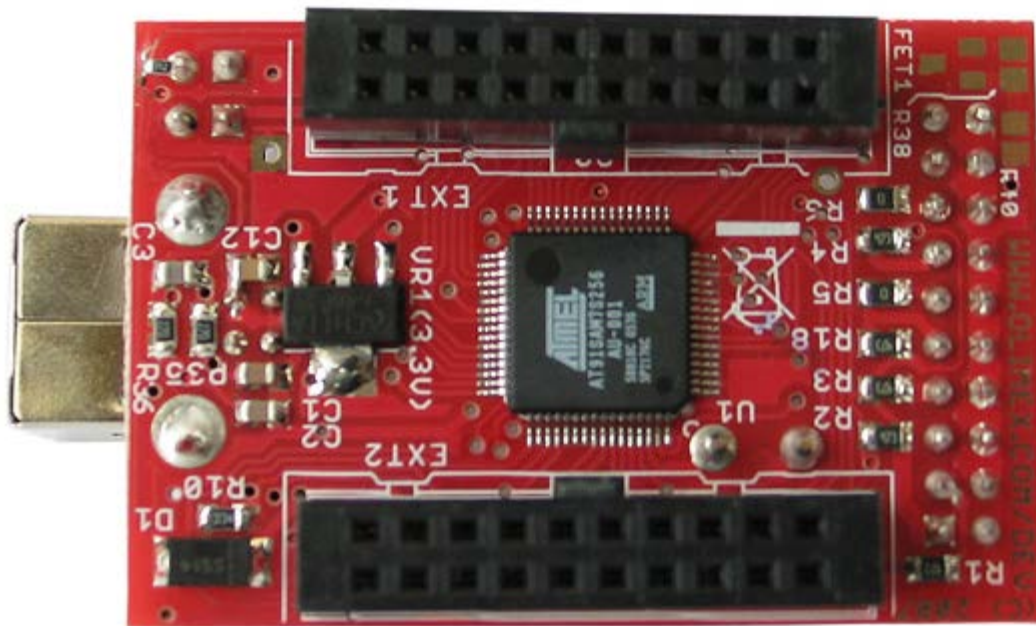
Email & Skype: info@chipsmall.com Web: www.chipsmall.com

Address: A1208, Overseas Decoration Building, #122 Zhenhua RD., Futian, Shenzhen, China



SAM7-H256 HEADER DEVELOPMENT BOARD FOR AT91SAM7S256 ARM7TDMI-S MICROCONTROLLER





FEATURES:

- MCU: **AT91SAM7S256** 16/32 bit ARM7TDMI™ with 256K Bytes Program Flash, 64K Bytes RAM, USB 2.0, RTT, 10 bit ADC 384 ksps, 2x UARTs, TWI (I2C), SPI, 3x 32bit TIMERS, 4x PWM, SSC, WDT, PDC (DMA) for all peripherals, up to 60MHz operation
- perfect solution for building custom USB peripherals
- standard JTAG connector with ARM 2x10 pin layout for programming/debugging with ARM-JTAG
- USB connector
- RESET circuit
- RESET button
- status LED
- TST jumper, for SAM-BA downloading
- on board voltage regulator 3.3V with up to 800mA current
- single power supply: through USB or from extension header pin
- power supply LED
- power supply filtering capacitor
- 18.432 Mhz crystal on socket
- extension headers for all uC ports + RST and power supply
- PCB: FR-4, 1.5 mm (0,062"), soldermask, silkscreen component print
- Dimensions: 50 x 34 mm (2 x 1.3")
- Distance between the headers: 25.4 mm (1")

DOCUMENTS:

- [SAM7-H256 extension headers pin assignments](#)
- [SAM7-H256 dimensions](#)
- [SAM7-H256.pdf](#)
- [How to program SAM7-H256](#)
- [Using Open Source Tools for AT91SAM7 Cross Development - Revision B](#) guide by Jim Lynch

HARDWARE:

- [SAM7-H256 Schematic](#) old schematic for archive purposes

- [SAM7-H256 schematic REV.C](#) current schematic

SOFTWARE:

- [Blinking LED project](#) for REW-ARM 4.41 and binary code for SAM-BA load
- [Sample mouse driver with AT91SAM7P256 project](#)
- [UART routines project](#)
- [SD/MMC read/write routines project](#)
- [button read, temperature measurement project](#)
- [BLINK_LED](#) project for GCC+OpenOCD+Eclipse
- [BLINK_LED](#) for EW-ARM and [Binary code](#) for SAM-BA load
- [OpenOCD + Eclipse set of projects 1.00](#) include flash write make file for SAM7-H256. The complete list of projects included is [here](#).

ORDERING CODES:

SAM7-H256 - assembled and tested board, includes AT91SAM7S256 microcontroller
