



Chipsmall Limited consists of a professional team with an average of over 10 year of expertise in the distribution of electronic components. Based in Hongkong, we have already established firm and mutual-benefit business relationships with customers from,Europe,America and south Asia,supplying obsolete and hard-to-find components to meet their specific needs.

With the principle of “Quality Parts,Customers Priority,Honest Operation,and Considerate Service”,our business mainly focus on the distribution of electronic components. Line cards we deal with include Microchip,ALPS,ROHM,Xilinx,Pulse,ON,Everlight and Freescale. Main products comprise IC,Modules,Potentiometer,IC Socket,Relay,Connector.Our parts cover such applications as commercial,industrial, and automotives areas.

We are looking forward to setting up business relationship with you and hope to provide you with the best service and solution. Let us make a better world for our industry!



Contact us

Tel: +86-755-8981 8866 Fax: +86-755-8427 6832

Email & Skype: info@chipsmall.com Web: www.chipsmall.com

Address: A1208, Overseas Decoration Building, #122 Zhenhua RD., Futian, Shenzhen, China

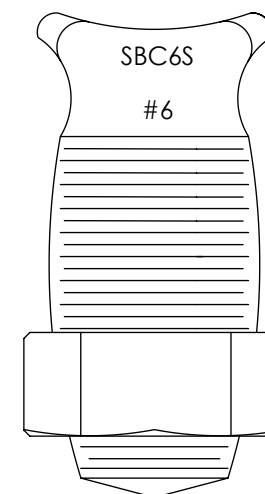
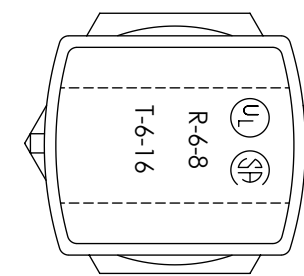
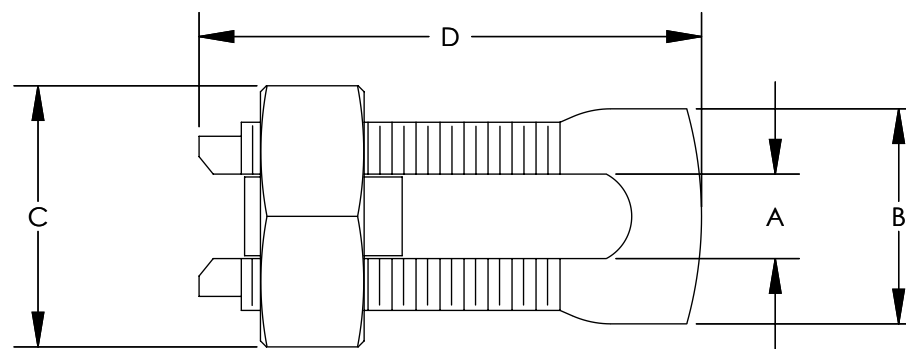


THIS COPY IS PROVIDED ON A RESTRICTED BASIS AND IS NOT TO BE USED IN ANY WAY DETRIMENTAL TO THE INTERESTS OF PANDUIT CORP.

NOTES:

1. HIGH STRENGTH ELECTROLYTIC COPPER HIGHLY RESISTANT TO CORROSION AND SEASON CRACKING.
2. FOR COPPER AND COPPERWELD WIRES ONLY.
3. *CONNECTOR CAN BE USED WITH 3 WIRES, BUT IS NOT CSA APPROVED WITH 3 WIRES.
4. **THE CONDUCTOR SIZES SHOWN ARE FOR EQUAL RUN AND TAP COMBINATIONS FOR BOTH SOLID AND STRANDED UNLESS OTHERWISE LISTED.
5. PARTS ARE UL LISTED TO UL467 AND UL486. PARTS ARE CSA CERTIFIED.

CATALOG NUMBER	COPPER CONDUCTOR		MIN. TAP WITH ONE MAX. RUN	APPROXIMATE DIMENSIONS - INCHES				INSTALLATION TORQUE
	RANGE OF EQUAL RUN & TAP			A	B	C	D	
	MIN.	MAX.						
SBC8-C	10 STR	8 STR	16 STR	0.14	0.39	0.55	0.86	80
SBC6S-C	8 STR	6 STR	16 STR	0.16	0.41	0.62	0.95	165
*SBC6SL-C	8 STR	6 STR	16 STR	0.17	0.41	0.63	1.10	165
SBC4S-C	8 STR	6 STR	14 STR	0.21	0.45	0.69	0.98	165
*SBC4SL-C	8 STR	6 STR	14 STR	0.22	0.45	0.69	1.30	165
SBC3-C	8 STR	4 STR	14 STR	0.27	0.58	0.81	1.16	275
SBC2-C	6 STR	2 STR	14 STR	0.31	0.59	0.86	1.23	275
SBC1/0-L	4 STR	1/0 STR	14 STR	0.37	0.75	0.93	1.55	385
SBC2/0-Q	2 STR	2/0 STR	14 STR	0.42	0.79	1.05	1.72	385
SBC3/0-Q	1 STR	3/0 STR	8 STR	0.53	0.95	1.24	2.07	500
SBC250-Q	1 STR	250 kcmil	8 STR	0.58	1.03	1.36	2.09	650
SBC350-1	2/0 STR	350 kcmil	1/0 STR	0.70	1.16	1.48	2.42	650
SBC500-1	300 kcmil	500 kcmil	2/0 STR	0.81	1.33	1.74	2.83	825



REV	DATE	BY	CHK	APR	DESCRIPTION	ECN
07	10/15	JHNU	JHNU	RGB	REVISED MARKING LOCATION ADDED NOTE TO SPECIFY PARTS ARE UL 486 AND UL467	N10850BM-C41512
06	10/13	JHNU	JHNU	RGB	REVISED MAX RUN & TAP FOR SBC6S-C: 6 STR WAS 6 SOL	N10850BM-C41512
05	3/13	JHNU	JHNU	RGB	REVISED TITLE BLOCK	N10850BM-C41512

TITLE SBC SERIES - COPPER SPLIT BOLT CONNECTOR CUSTOMER DRAWING			
ITEM REVISION NAME	N10850BM-C41512/07		
DATASET FILE NAME	C41512/07.SLDDRW		
UNLESS OTHERWISE SPECIFIED, DIMENSIONAL TOLERANCES ARE: IN [mm]			
.X ±	.XXX ±	THIRD ANGLE PROJECTION	
.XX ±	ANGLES ±	DRAWN BY: JHNU	
DATE: 3/06		CHK: JAC	SCALE: NONE
SHEET 1 OF 1			SIZE: B



MATERIAL: SEE NOTES
DRAWING NUMBER: C41512