



Chipsmall Limited consists of a professional team with an average of over 10 year of expertise in the distribution of electronic components. Based in Hongkong, we have already established firm and mutual-benefit business relationships with customers from,Europe,America and south Asia,supplying obsolete and hard-to-find components to meet their specific needs.

With the principle of “Quality Parts,Customers Priority,Honest Operation,and Considerate Service”,our business mainly focus on the distribution of electronic components. Line cards we deal with include Microchip,ALPS,ROHM,Xilinx,Pulse,ON,Everlight and Freescale. Main products comprise IC,Modules,Potentiometer,IC Socket,Relay,Connector.Our parts cover such applications as commercial,industrial, and automotives areas.

We are looking forward to setting up business relationship with you and hope to provide you with the best service and solution. Let us make a better world for our industry!



## Contact us

Tel: +86-755-8981 8866 Fax: +86-755-8427 6832

Email & Skype: info@chipsmall.com Web: www.chipsmall.com

Address: A1208, Overseas Decoration Building, #122 Zhenhua RD., Futian, Shenzhen, China

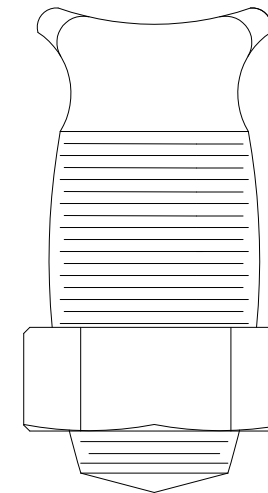
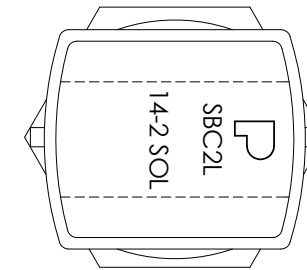
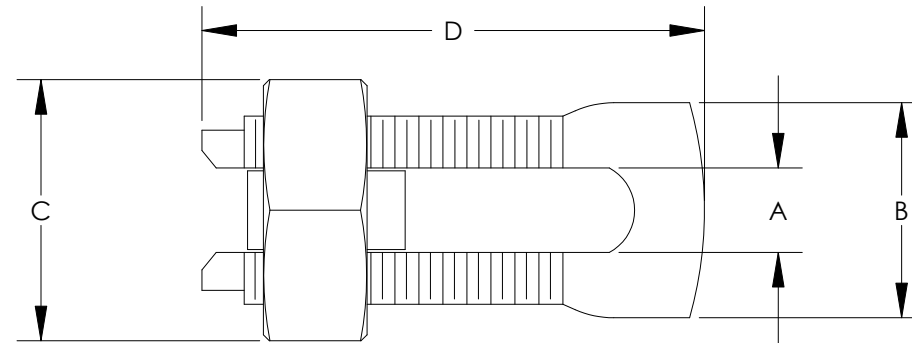


THIS COPY IS PROVIDED ON A RESTRICTED BASIS AND IS NOT TO BE USED IN ANY WAY DETRIMENTAL TO THE INTERESTS OF PANDUIT CORP.

NOTES:

- HIGH STRENGTH ELECTROLYTIC COPPER HIGHLY RESISTANT TO CORROSION AND SEASON CRACKING.
- FOR COPPER AND COPPERWELD WIRES ONLY.
- \*CONNECTOR CAN BE USED WITH 3 WIRES, BUT IS NOT CSA APPROVED WITH 3 WIRES.
- \*\*THE CONDUCTOR SIZES SHOWN ARE FOR EQUAL RUN AND TAP COMBINATIONS FOR BOTH SOLID AND STRANDED UNLESS OTHERWISE LISTED.

CATALOG NUMBER	COPPER CONDUCTOR		MAX CONDUCTOR	COPPER WELD		WIRE DIAMETER RANGE (IN INCHES)	APPROXIMATE DIMENSIONS (IN INCHES)				REQUIRED TORQUE (IN. - LB.)
	RANGE OF EQUAL RUN & TAP		MIN TAP WITH ONE MAX RUN	STR.	TYPE A		A	B	C	D	
	MIN.	MAX									
*SBC8L-C	16 STR	8 STR	16 STR	----	----	.08-.15	0.15	0.38	0.5	0.84	80
*SBC2L-C	14 STR	2 STR	14 STR	3 NO. 7	3A	.16-.29	0.33	0.63	0.81	1.55	275
SBC750-1	350 kcmil	750 kcmil	8 SOL	19 NO. 5	----	.68-1.00	1.03	1.94	2.13	3.75	1000
SBC1000-1	500 kcmil	1000 kcmil	8 SOL	----	----	.82-1.15	1.22	2.25	2.50	4.00	1100



C41188\_07

							<b>PANDUIT CORP. TINLEY PARK, ILLINOIS</b>			
							SBC SERIES - COPPER SPLIT BOLT CONNECTOR CUSTOMER DRAWING			
							UNLESS OTHERWISE SPECIFIED DIMENSIONAL TOLERANCES ARE: (.X) ±      (.XXX) ± (.XX) ±     ANGLES ±			
							UNLESS OTHERWISE SPECIFIED, ALL DIMENSIONS ARE GIVEN IN INCHES, THIRD ANGLE PROJECTION			
07	2/11	JHNU	RWK	REV'D RANGE OF EQUAL RUN & TAP FOR SBC750-1: 350 kcmil MIN. WAS 8 SOL MIN. REV'D RANGE OF EQUAL RUN & TAP FOR SBC1000-1: 500 kcmil MIN. WAS 8 SOL MIN.	N10850BN-C41188	FLD	FLD	DRAWN BY EJD	MAT'L: SEE NOTE 1 ABOVE	SCALE NONE
REV	DATE	BY	CHK	DESCRIPTION	ECN	-R	SUP	DATE		DRAWING NO / CAD FILE C41188
								CHK'D		DWG SIZE B