



Chipsmall Limited consists of a professional team with an average of over 10 year of expertise in the distribution of electronic components. Based in Hongkong, we have already established firm and mutual-benefit business relationships with customers from,Europe,America and south Asia,supplying obsolete and hard-to-find components to meet their specific needs.

With the principle of “Quality Parts,Customers Priority,Honest Operation,and Considerate Service”,our business mainly focus on the distribution of electronic components. Line cards we deal with include Microchip,ALPS,ROHM,Xilinx,Pulse,ON,Everlight and Freescale. Main products comprise IC,Modules,Potentiometer,IC Socket,Relay,Connector.Our parts cover such applications as commercial,industrial, and automotives areas.

We are looking forward to setting up business relationship with you and hope to provide you with the best service and solution. Let us make a better world for our industry!



## Contact us

Tel: +86-755-8981 8866 Fax: +86-755-8427 6832

Email & Skype: info@chipsmall.com Web: www.chipsmall.com

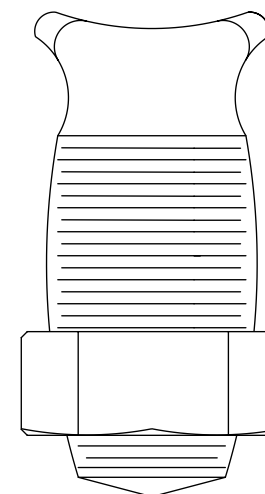
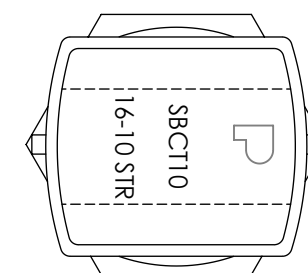
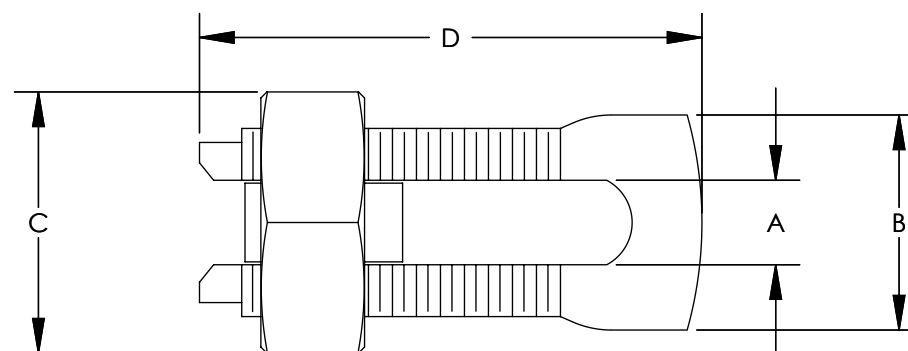
Address: A1208, Overseas Decoration Building, #122 Zhenhua RD., Futian, Shenzhen, China



NOTES:

- HIGH STRENGTH ELECTROLYTIC COPPER HIGHLY RESISTANT TO CORROSION AND SEASON CRACKING.
- ELECTRO-TIN PLATED BOLT, NUT SPACER AND PRESSURE BAR.
- WHEN CONNECTING ALUMINUM OR ACSR WIRE, USE OF PANDUIT OXIDE JOINT COMPOUND CMP-100 IS RECOMMENDED.
- UL LISTED & CSA CERTIFIED (FOR APPLICABLE PARTS) WITH COPPER CABLE.
- \*THE CONDUCTOR SIZES SHOWN ARE FOR EQUAL RUN AND TAP COMBINATIONS FOR BOTH SOLID AND STRANDED WIRE UNLESS OTHERWISE LISTED.

CATALOG NUMBER	COPPER & ALUMINUM			ALUMINUM RANGE NOT U.L. LISTED OR CSA CERTIFIED		COPPER WELD MAX STR.	WIRE DIAMETER RANGE IN.	APPROXIMATE DIMENSIONS (IN INCHES)				REQUIRED TORQUE (IN. - LB.)
	RANGE OF EQUAL RUN & TAP		MIN TAP WITH ONE MAX RUN	ALUMINUM	ACSR			A	B	C	D	
	MIN.	MAX										
SBCT10-C	16 STR	10 STR	16 STR	16 STR - 10 STR	----	----	.57-.116	0.15	0.38	0.49	0.87	80
SBCT750-1	2/0 STR	750 kcmil	2/0 STR	250MCM - 750MCM	4/0-666.6	19 NO. 5	.563-.999	1.03	1.93	2.11	3.78	1000
SBCT1000-1	4/0 STR	1000 kcmil	4/0 STR	350MCM - 1000MCM	300-900	----	.682-1.162	1.23	2.29	2.53	4.02	1100



							TITLE COPPER DUAL RATED SPLIT BOLT CONNECTOR SBCT SERIES CUSTOMER DRAWING	
							ITEM REVISION NAME N10899BG/03	
							DATASET FILE NAME N10899BG-C41212/03.SLDDRW	
							UNLESS OTHERWISE SPECIFIED, DIMENSIONAL TOLERANCES ARE: IN [mm] .X ± .XXX ± .XX ± .02 [.5] ANGLES ±	
							THIRD ANGLE PROJECTION	
03	5/15	JHNU	JHNU	RGB	REVISED NOTE 4 TO REMOVE ALUMINUM FROM UL LISTED WIRE REVISED TITLE BLOCK	N10899BG-DC	DRAWING NUMBER C41212	
REV	DATE	BY	CHK	APR	DESCRIPTION	ECN	DRAWN BY T SMA	DATE 3/97
							CHK TM	SCALE N/A
							SHEET 1 OF 1	
							SIZE B	



SEE NOTES