



Chipsmall Limited consists of a professional team with an average of over 10 year of expertise in the distribution of electronic components. Based in Hongkong, we have already established firm and mutual-benefit business relationships with customers from,Europe,America and south Asia,supplying obsolete and hard-to-find components to meet their specific needs.

With the principle of “Quality Parts,Customers Priority,Honest Operation,and Considerate Service”,our business mainly focus on the distribution of electronic components. Line cards we deal with include Microchip,ALPS,ROHM,Xilinx,Pulse,ON,Everlight and Freescale. Main products comprise IC,Modules,Potentiometer,IC Socket,Relay,Connector.Our parts cover such applications as commercial,industrial, and automotives areas.

We are looking forward to setting up business relationship with you and hope to provide you with the best service and solution. Let us make a better world for our industry!



Contact us

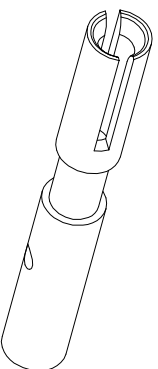
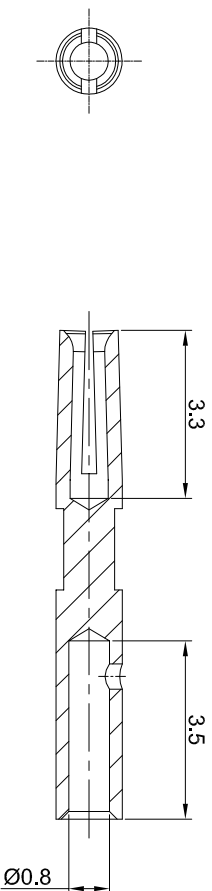
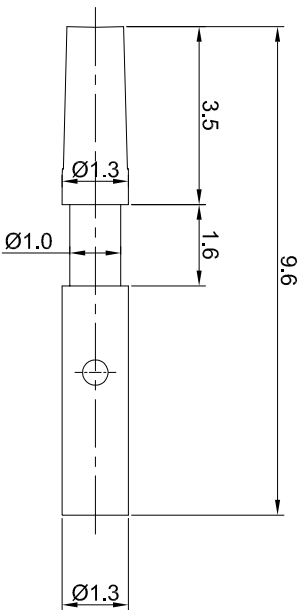
Tel: +86-755-8981 8866 Fax: +86-755-8427 6832

Email & Skype: info@chipsmall.com Web: www.chipsmall.com

Address: A1208, Overseas Decoration Building, #122 Zhenhua RD., Futian, Shenzhen, China



| REVISIONS | | | | |
|-----------|-----|------------------|-------------|--------------|
| REV | ECO | DESCRIPTION | DATE | BY APPR |
| A1 | - | RELEASED DRAWING | Jun.05.2018 | White TOMMIY |



- NOTES: UNLESS OTHERWISE SPECIFIED
- MATERIAL: COPPER ALLOY, GOLD PLATED
 - SPECIFICATIONS:
 - RATED CURRENT: 0.5 AMPS
 - CONTACT RESISTANCE: <12.5 milliohm
 - AVAILABLE WIRE RANGE: 22AWG~26AWG
 - ROHS COMPLIANT
 - ALL DIMENSIONS ARE FOR REFERENCE USE ONLY.

| QUANTITY | SEE PART NUMBER CHART | PART NUMBER | DESCRIPTION | ITEM |
|----------|-----------------------|-------------|-------------|------|
| 1 | | | | 1 |

MATERIALS LIST

| UNLESS OTHERWISE SPECIFIED | SIGNATURES | DATE |
|--|--|---|
| 1) All dimensions are in millimeters. 2) Tolerances are as follows: DEC 20145 Fractions ±1/64 PL DEC 20145 Rad. R1 3) Note reference = | DRAWN: White CHECKED: Tod ENGINEER: APPROVAL: Tommy | JUN.05.2018 JUN.05.2018 JUN.05.2018 |

| PROCESS SPECIFICATIONS: | CUSTOMER: | SIZE | TYPE | DWG NO. | REVISION |
|-------------------------|---|------|------|----------|----------|
| NEST FASTY: | THIS DRAWING IS SUPPLIED FOR INFORMATION ONLY. DESIGN FEATURES, SPECIFICATIONS AND PERFORMANCE DATA ARE THE PROPERTY OF AMPHENOL CORPORATION. NO RIGHTS OR PERMISSIONS ARE GRANTED FOR REPRODUCTION OR TRANSMISSION IN ANY FORM OR BY ANY MEANS, ELECTRONIC OR MECHANICAL, INCLUDING PHOTOCOPYING, RECORDING, OR BY ANY INFORMATION STORAGE AND RETRIEVAL SYSTEMS. DIMENSIONS ARE SUBJECT TO NORMAL MANUFACTURING VARIATIONS. | B | C- | SC000460 | A1 |

Socket contact, 0.6mm, Crimp 22~26AWG

Amphenol

Sine Systems - www.amphenol-sine.com
44724 Wadley Drive
Clinton Township, MI 48036