



Chipsmall Limited consists of a professional team with an average of over 10 year of expertise in the distribution of electronic components. Based in Hongkong, we have already established firm and mutual-benefit business relationships with customers from,Europe,America and south Asia,supplying obsolete and hard-to-find components to meet their specific needs.

With the principle of “Quality Parts,Customers Priority,Honest Operation,and Considerate Service”,our business mainly focus on the distribution of electronic components. Line cards we deal with include Microchip,ALPS,ROHM,Xilinx,Pulse,ON,Everlight and Freescale. Main products comprise IC,Modules,Potentiometer,IC Socket,Relay,Connector.Our parts cover such applications as commercial,industrial, and automotives areas.

We are looking forward to setting up business relationship with you and hope to provide you with the best service and solution. Let us make a better world for our industry!



## Contact us

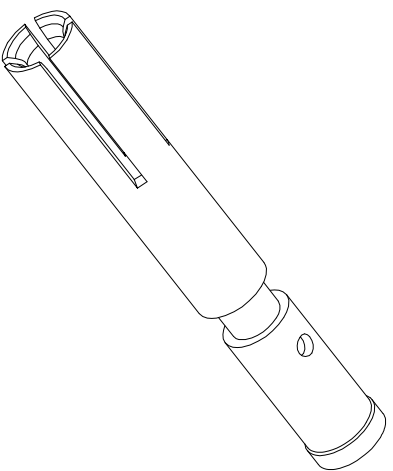
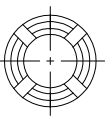
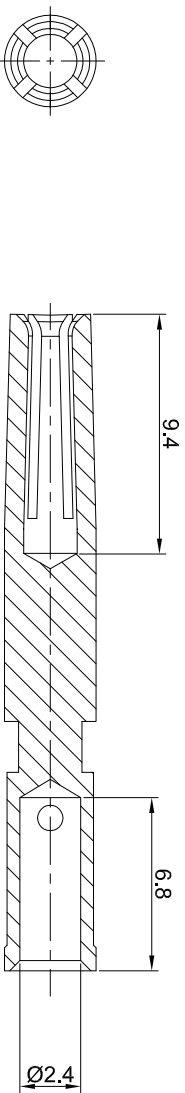
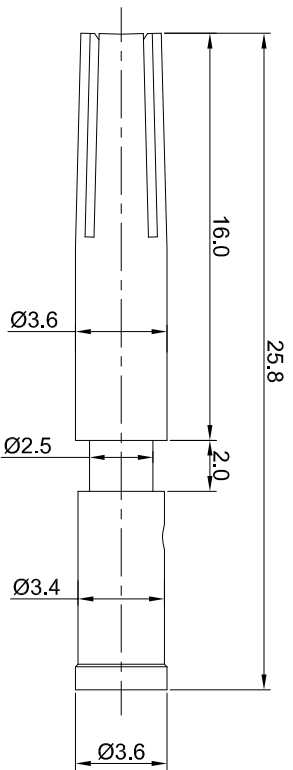
Tel: +86-755-8981 8866 Fax: +86-755-8427 6832

Email & Skype: info@chipsmall.com Web: www.chipsmall.com

Address: A1208, Overseas Decoration Building, #122 Zhenhua RD., Futian, Shenzhen, China



REVISIONS				
REV	ECO	DESCRIPTION	DATE	BY APPR
A1	-	RELEASED DRAWING	Jun.05.2018	White TOMMY



- NOTES: UNLESS OTHERWISE SPECIFIED
1. MATERIAL: COPPER ALLOY, GOLD PLATED
  2. SPECIFICATIONS:
    - 2.1 RATED CURRENT: 30 AMPS
    - 2.2 CONTACT RESISTANCE: <3 milliohm
    - 2.3 AVAILABLE WIRE RANGE: 14AWG~18AWG
    - 2.4 ROHS COMPLIANT
  3. ALL DIMENSIONS ARE FOR REFERENCE USE ONLY.

TITLE: Socket contact 2.0mm Crimp 14~18AWG

DWG NO: SC000462

REV: A1

SH: 1

OF: 1

REV: A1

Amphenol

Site Systems - www.amphenol-site.com  
44724 Morley Drive  
Clinton Township, MI 48036

Socket contact 2.0mm Crimp 14~18AWG

QUANTITY	SEE PART NUMBER CHART	PART NUMBER	DESCRIPTION	ITEM

**MATERIALS LIST**

SIGNATURES	DATE
DRAWN: White	Jun.05.2018
CHECKED: Tod	Jun.05.2018
ENGINEER:	
APPROVAL: Tommy	Jun.05.2018

UNLESS OTHERWISE SPECIFIED  
1) All dimensions are in millimeters.  
2) Tolerances are as follows:  
2 PL DEC 2015 Finish: ±.104  
3 PL DEC 2015 Finish: ±.127  
3) Note reference =

MATERIAL SPECIFICATIONS:

CUSTOMER: THIS DRAWING IS SUPPLIED FOR INFORMATION ONLY. DESIGN FEATURES, SPECIFICATIONS AND PERFORMANCE DATA ARE THE PROPERTY OF AMPHENOL CORPORATION. NO RIGHTS OR PERMISSIONS ARE GRANTED FOR REPRODUCTION OR TRANSMISSION OF THIS DRAWING OR ANY DIMENSIONS ARE SUBJECT TO USUAL MANUFACTURING VARIATIONS.

PROCESS SPECIFICATIONS:

NEXT ASSTY:

SIZE: B TYPE: C- DRAWING: SC000462 REVISION: A1  
SCALE: NONE SHEET: 1 OF: 1