



Chipsmall Limited consists of a professional team with an average of over 10 year of expertise in the distribution of electronic components. Based in Hongkong, we have already established firm and mutual-benefit business relationships with customers from,Europe,America and south Asia,supplying obsolete and hard-to-find components to meet their specific needs.

With the principle of “Quality Parts,Customers Priority,Honest Operation,and Considerate Service”,our business mainly focus on the distribution of electronic components. Line cards we deal with include Microchip,ALPS,ROHM,Xilinx,Pulse,ON,Everlight and Freescale. Main products comprise IC,Modules,Potentiometer,IC Socket,Relay,Connector.Our parts cover such applications as commercial,industrial, and automotives areas.

We are looking forward to setting up business relationship with you and hope to provide you with the best service and solution. Let us make a better world for our industry!



Contact us

Tel: +86-755-8981 8866 Fax: +86-755-8427 6832

Email & Skype: info@chipsmall.com Web: www.chipsmall.com

Address: A1208, Overseas Decoration Building, #122 Zhenhua RD., Futian, Shenzhen, China



Type SC10, SC15, SC30, SC55 Series

Key Features

- Wide Inductance Range
- Insulated Packaging
- Four Sizes
- Flame Retardant
- Wide Temperature Range
- Established Reliability
- Fully Protected from the Environment
- Available from Distribution



TE Connectivity quality and reliability are guaranteed in this range of insulated and shielded RF Inductors. The insulated range has a self-extinguishing polyolefin sleeve. Their small size make them ideal for use when space is at a premium. And they are also fully protected from environmental factors. Electrostatic and electromagnetic screening is provided by the magnetic enclosure. A wide range of values are available and the self-extinguishing polyolefin sleeve enhances environmental protection. The SC series was originally designed for military applications but now has widespread industrial use.

Characteristics - Electrical

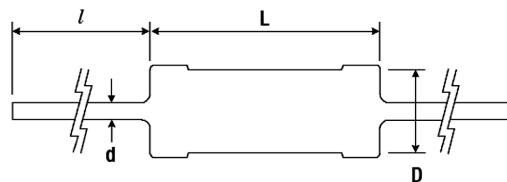
| | SC10 | SC15 | SC30 | SC55 |
|---|-------------------------------|--|-----------------|-----------------|
| Inductance Range: | | See Table - E12 Grid (Non-standard values available to special order) | | |
| Selection Tolerance: | ±10% | ±10% | ±10% | ±10% |
| Power Rating at 70°C: | 0.33W | See Below | 0.25W | 0.30W |
| Isolation Voltage: | 700V DC or AC peak | | | |
| Limits of Inductance Change: | 5% after 1000 hours endurance | | | |
| Operating Temperature Range: | -55°C to +100°C | -55°C to +100°C | -55°C to +100°C | -55°C to +125°C |
| Recommended Storage Temperature: | 0°C to +35°C | | | |
| Climatic Category: | 55/100/21 | 55/100/21 | 55/100/21 | 55/125/21 |

SC15 Power Rating Values between 0.15uH and 4.7uH - Power Rating 0.33 Watt
 Values between 5.6uH and 330uH - Power Rating 0.20 Watt

Packaging and Marking

| Type | Ammo Pack | Reeled | Weight per Component | Marking |
|------|------------|-------------|----------------------|---------|
| SC10 | 500 Pieces | 1500 Pieces | - | LC10 |
| SC15 | 500 Pieces | 1500 Pieces | - | LC15 |
| SC30 | 500 Pieces | 2500 Pieces | - | LC30 |
| SC55 | 500 Pieces | 1500 Pieces | 0.6g | LC55 |

Dimensions



| Size | L Max. | D Max. | l Min. | d |
|------|--------|--------|--------|-------|
| SC10 | 10.0mm | 4.2mm | 25mm | 0.6mm |
| SC15 | 10.0mm | 4.5mm | 30mm | 0.6mm |
| SC30 | 7.0mm | 2.8mm | 25mm | 0.5mm |
| SC55 | 11.4mm | 5.2mm | 30mm | 0.6mm |

Type SC10, SC15, SC30, SC55 Series

Characteristics - Electrical - Type SC10 - Section 1

| Inductance Value - μ H | Inductance Code | Test Freq. MHz | Q Factor Min. | S.R.F. MHz Min. | Max. DC Resistance Ohms at 20°C | Direct Current at 70°C Max. mA |
|----------------------------|-----------------|----------------|---------------|-----------------|---------------------------------|--------------------------------|
| 0.10 | R10 | 25 | 50 | 500 | 0.055 | 2060 |
| 0.12 | R12 | 25 | 50 | 475 | 0.060 | 1970 |
| 0.15 | R15 | 25 | 50 | 450 | 0.065 | 1900 |
| 0.18 | R18 | 25 | 50 | 425 | 0.070 | 1830 |
| 0.22 | R22 | 25 | 50 | 400 | 0.075 | 1770 |
| 0.27 | R27 | 25 | 50 | 380 | 0.085 | 1660 |
| 0.33 | R33 | 25 | 50 | 360 | 0.095 | 1570 |
| 0.39 | R39 | 25 | 50 | 330 | 0.11 | 1460 |
| 0.47 | R47 | 25 | 50 | 300 | 0.12 | 1390 |
| 0.56 | R56 | 25 | 50 | 280 | 0.14 | 1290 |
| 0.68 | R68 | 25 | 45 | 260 | 0.16 | 1210 |
| 0.82 | R82 | 25 | 45 | 235 | 0.26 | 950 |
| 1.0 | 1R0 | 25 | 45 | 210 | 0.30 | 880 |
| 1.2 | 1R2 | 7.9 | 32 | 190 | 0.50 | 685 |
| 1.5 | 1R5 | 7.9 | 32 | 170 | 0.60 | 625 |
| 1.8 | 1R8 | 7.9 | 32 | 156 | 0.75 | 560 |
| 2.2 | 2R2 | 7.9 | 32 | 140 | 1.10 | 460 |
| 2.7 | 2R7 | 7.9 | 32 | 125 | 1.40 | 410 |
| 3.3 | 3R3 | 7.9 | 32 | 115 | 1.90 | 350 |

Type SC10 - Section 2

| Inductance Value - μ H | Inductance Code | Test Freq. MHz | Q Factor Min. | S.R.F. MHz Min. | Max. DC Resistance Ohms at 20°C | Direct Current at 70°C Max. mA |
|----------------------------|-----------------|----------------|---------------|-----------------|---------------------------------|--------------------------------|
| 3.9 | 3R9 | 7.9 | 45 | 75 | 0.25 | 970 |
| 4.7 | 4R7 | 7.9 | 45 | 65 | 0.35 | 820 |
| 5.6 | 5R6 | 7.9 | 45 | 60 | 0.40 | 765 |
| 6.8 | 6R8 | 7.9 | 45 | 55 | 0.55 | 650 |
| 8.2 | 8R2 | 7.9 | 45 | 50 | 0.75 | 560 |
| 10 | 100 | 7.9 | 45 | 45 | 0.9 | 510 |
| 12 | 120 | 2.5 | 55 | 40 | 1.1 | 460 |
| 15 | 150 | 2.5 | 55 | 35 | 1.5 | 395 |
| 18 | 180 | 2.5 | 55 | 30 | 2.7 | 295 |
| 22 | 220 | 2.5 | 55 | 27 | 3.0 | 280 |
| 27 | 270 | 2.5 | 55 | 25 | 4.5 | 230 |
| 33 | 330 | 2.5 | 55 | 22 | 5.2 | 210 |
| 39 | 390 | 2.5 | 55 | 20 | 7.5 | 175 |
| 47 | 470 | 2.5 | 55 | 18 | 9.6 | 156 |

Type SC10 - Section 3

| Inductance Value - μ H | Inductance Code | Test Freq. MHz | Q Factor Min. | S.R.F. MHz Min. | Max. DC Resistance Ohms at 20°C | Direct Current at 70°C Max. mA |
|----------------------------|-----------------|----------------|---------------|-----------------|---------------------------------|--------------------------------|
| 56 | 560 | 2.5 | 55 | 11 | 8.1 | 170 |
| 68 | 680 | 2.5 | 55 | 10 | 9.0 | 161 |
| 82 | 820 | 2.5 | 50 | 8.5 | 10.0 | 153 |
| 100 | 101 | 2.5 | 50 | 7.0 | 11.0 | 146 |
| 120 | 121 | 0.79 | 40 | 6.5 | 12.0 | 140 |
| 150 | 151 | 0.79 | 40 | 5.5 | 13.0 | 134 |
| 180 | 181 | 0.79 | 45 | 5.0 | 15.0 | 125 |
| 220 | 221 | 0.79 | 45 | 4.2 | 17.0 | 117 |
| 270 | 271 | 0.79 | 45 | 3.8 | 19.5 | 110 |
| 330 | 331 | 0.79 | 45 | 3.3 | 22.0 | 103 |
| 390 | 391 | 0.79 | 45 | 3.1 | 24.5 | 98 |
| 470 | 471 | 0.79 | 45 | 2.9 | 26.5 | 94 |
| 560 | 561 | 0.79 | 45 | 2.7 | 30.0 | 88 |
| 680 | 681 | 0.79 | 45 | 2.5 | 33.0 | 84 |
| 820 | 821 | 0.79 | 45 | 2.3 | 36.5 | 80 |
| 1000 | 102 | 0.79 | 40 | 2.2 | 40.0 | 76 |

Section 1 was formerly the TE Connectivity C10 Series, Section 2 was formerly the TE Connectivity C11 Series, Section 3 was formerly the TE Connectivity C12 Series

Type SC10, SC15, SC30, SC55 Series

Characteristics - Electrical Type SC15

| Inductance Value - μ H | Inductance Code | Test Freq. MHz | Q Factor Min. | S.R.F. MHz Min. | Max. DC Resistance Ohms at 20°C | Direct Current at 70°C Max. mA |
|----------------------------|-----------------|----------------|---------------|-----------------|---------------------------------|--------------------------------|
| 0.15 | R15 | 25 | 50 | 525 | 0.030 | 2790 |
| 0.18 | R18 | 25 | 45 | 480 | 0.040 | 2420 |
| 0.22 | R22 | 25 | 50 | 450 | 0.055 | 2060 |
| 0.27 | R27 | 25 | 45 | 400 | 0.070 | 1830 |
| 0.33 | R33 | 25 | 45 | 360 | 0.090 | 1610 |
| 0.39 | R39 | 25 | 45 | 350 | 0.100 | 1530 |
| 0.47 | R47 | 25 | 45 | 310 | 0.120 | 1400 |
| 0.56 | R56 | 25 | 50 | 280 | 0.135 | 1320 |
| 0.68 | R68 | 25 | 50 | 250 | 0.15 | 1250 |
| 0.82 | R82 | 25 | 50 | 220 | 0.22 | 1030 |
| 1.0 | 1R0 | 25 | 50 | 200 | 0.29 | 900 |
| 1.2 | 1R2 | 7.9 | 33 | 180 | 0.42 | 750 |
| 1.5 | 1R5 | 7.9 | 33 | 160 | 0.50 | 685 |
| 1.8 | 1R8 | 7.9 | 33 | 150 | 0.65 | 600 |
| 2.2 | 2R2 | 7.9 | 33 | 135 | 0.95 | 495 |
| 2.7 | 2R7 | 7.9 | 33 | 120 | 1.20 | 440 |
| 3.3 | 3R3 | 7.9 | 33 | 110 | 2.00 | 340 |
| 3.9 | 3R9 | 7.9 | 33 | 100 | 2.30 | 320 |
| 4.7 | 4R7 | 7.9 | 33 | 90 | 2.60 | 300 |
| 5.6 | 5R6 | 7.9 | 45 | 60 | 0.32 | 690 |
| 6.8 | 6R8 | 7.9 | 50 | 55 | 0.50 | 550 |
| 8.2 | 8R2 | 7.9 | 50 | 50 | 0.60 | 505 |
| 10 | 100 | 7.9 | 55 | 45 | 0.90 | 415 |
| 12 | 120 | 2.5 | 65 | 42 | 1.10 | 375 |
| 15 | 150 | 2.5 | 65 | 40 | 1.40 | 330 |
| 18 | 180 | 2.5 | 75 | 34 | 2.25 | 260 |
| 22 | 220 | 2.5 | 75 | 30 | 2.50 | 250 |
| 24* | 240* | 2.5 | 60 | 27 | 2.50 | 250 |
| 27 | 270 | 2.5 | 60 | 25 | 2.60 | 242 |
| 30 | 300 | 2.5 | 65 | 21 | 2.80 | 230 |
| 33 | 330 | 2.5 | 65 | 19 | 3.00 | 227 |
| 36* | 360* | 2.5 | 60 | 15.5 | 2.50 | 250 |
| 39 | 390 | 2.5 | 60 | 14.5 | 2.60 | 244 |
| 43* | 430* | 2.5 | 60 | 13.7 | 2.70 | 238 |
| 47 | 470 | 2.5 | 55 | 13.0 | 2.75 | 235 |
| 51* | 510* | 2.5 | 55 | 12.7 | 2.85 | 231 |
| 56 | 560 | 2.5 | 55 | 12.0 | 3.00 | 225 |
| 62* | 620* | 2.5 | 55 | 11.5 | 3.15 | 220 |
| 68 | 680 | 2.5 | 55 | 11.0 | 3.30 | 215 |
| 75* | 750* | 2.5 | 55 | 10.5 | 3.70 | 203 |
| 82 | 820 | 2.5 | 50 | 10.3 | 3.90 | 200 |
| 91* | 910* | 2.5 | 50 | 10.0 | 4.30 | 188 |
| 100 | 101 | 2.5 | 50 | 9.5 | 4.50 | 185 |
| 110* | 111* | 0.79 | 60 | 8.9 | 4.90 | 176 |
| 120 | 121 | 0.79 | 65 | 8.7 | 5.20 | 170 |
| 130* | 131* | 0.79 | 65 | 8.5 | 5.45 | 167 |
| 150 | 151 | 0.79 | 65 | 8.0 | 6.05 | 160 |
| 160* | 161* | 0.79 | 65 | 7.5 | 6.40 | 154 |
| 180 | 181 | 0.79 | 65 | 7.0 | 6.75 | 150 |
| 200* | 201* | 0.79 | 65 | 6.5 | 7.10 | 147 |
| 220 | 221 | 0.79 | 65 | 6.2 | 7.45 | 144 |
| 240* | 241* | 0.79 | 65 | 5.9 | 7.80 | 140 |
| 270 | 271 | 0.79 | 65 | 5.7 | 9.00 | 131 |
| 300* | 301* | 0.79 | 65 | 5.4 | 11.50 | 118 |
| 330 | 331 | 0.79 | 65 | 5.1 | 12.50 | 111 |

Type SC10, SC15, SC30, SC55 Series

Characteristics - Electrical Type SC30

| Inductance Value - μ H | Inductance Code | Test Freq. MHz | Q Factor Min. | S.R.F. MHz Min. | Max. DC Resistance Ohms at 20°C | Direct Current at 70°C Max. mA |
|----------------------------|-----------------|----------------|---------------|-----------------|---------------------------------|--------------------------------|
| 0.022 | R022 | 50 | 33 | 1245 | 0.006 | 3000 |
| 0.027 | R027 | 50 | 33 | 1200 | 0.010 | 2800 |
| 0.033 | R033 | 50 | 33 | 1175 | 0.026 | 2620 |
| 0.039 | R039 | 50 | 33 | 1130 | 0.033 | 2320 |
| 0.047 | R047 | 50 | 33 | 1060 | 0.038 | 2170 |
| 0.056 | R056 | 50 | 33 | 990 | 0.048 | 1930 |
| 0.068 | R068 | 50 | 33 | 900 | 0.055 | 1800 |
| 0.082 | R082 | 50 | 33 | 750 | 0.065 | 1650 |
| 0.10 | R10 | 25 | 40 | 680 | 0.080 | 1490 |
| 0.12 | R12 | 25 | 40 | 640 | 0.090 | 1400 |
| 0.15 | R15 | 25 | 38 | 600 | 0.10 | 1330 |
| 0.18 | R18 | 25 | 35 | 550 | 0.12 | 1210 |
| 0.22 | R22 | 25 | 33 | 510 | 0.14 | 1120 |
| 0.27 | R27 | 25 | 33 | 430 | 0.16 | 1050 |
| 0.33 | R33 | 25 | 30 | 410 | 0.22 | 900 |
| 0.39 | R39 | 25 | 30 | 365 | 0.30 | 770 |
| 0.47 | R47 | 25 | 30 | 330 | 0.35 | 710 |
| 0.56 | R56 | 25 | 30 | 300 | 0.50 | 595 |
| 0.68 | R68 | 25 | 28 | 275 | 0.60 | 540 |
| 0.82 | R82 | 25 | 28 | 250 | 0.85 | 455 |
| 1.0 | 1R0 | 25 | 25 | 230 | 1.00 | 420 |
| 1.2 | 1R2 | 7.9 | 25 | 150 | 0.18 | 990 |
| 1.5 | 1R5 | 7.9 | 28 | 140 | 0.22 | 895 |
| 1.8 | 1R8 | 7.9 | 30 | 125 | 0.30 | 765 |
| 2.2 | 2R2 | 7.9 | 30 | 115 | 0.40 | 665 |
| 2.7 | 2R7 | 7.9 | 37 | 100 | 0.55 | 565 |
| 3.3 | 3R3 | 7.9 | 45 | 90 | 0.85 | 455 |
| 3.9 | 3R9 | 7.9 | 45 | 80 | 1.0 | 420 |
| 4.7 | 4R7 | 7.9 | 45 | 75 | 1.2 | 384 |
| 5.6 | 5R6 | 7.9 | 50 | 65 | 1.8 | 314 |
| 6.8 | 6R8 | 7.9 | 50 | 60 | 2.0 | 298 |
| 8.2 | 8R2 | 7.9 | 55 | 55 | 2.7 | 256 |
| 10 | 100 | 7.9 | 55 | 50 | 3.7 | 219 |
| 12 | 120 | 2.5 | 45 | 40 | 2.7 | 256 |
| 15 | 150 | 2.5 | 45 | 35 | 2.8 | 251 |
| 18 | 180 | 2.5 | 50 | 30 | 3.1 | 239 |
| 22 | 220 | 2.5 | 50 | 25 | 3.3 | 232 |
| 27 | 270 | 2.5 | 50 | 20 | 3.5 | 225 |
| 33 | 330 | 2.5 | 45 | 24 | 3.4 | 228 |
| 39 | 390 | 2.5 | 45 | 22 | 3.6 | 222 |
| 47 | 470 | 2.5 | 45 | 20 | 4.5 | 198 |
| 56 | 560 | 2.5 | 45 | 18 | 5.7 | 176 |
| 68 | 680 | 2.5 | 50 | 15 | 6.7 | 162 |
| 82 | 820 | 2.5 | 50 | 14 | 7.3 | 156 |
| 100 | 101 | 2.5 | 50 | 13 | 8.0 | 149 |
| 120 | 121 | 0.79 | 30 | 12 | 13.0 | 116 |
| 150 | 151 | 0.79 | 30 | 11 | 15.0 | 108 |
| 180 | 181 | 0.79 | 30 | 10 | 17.0 | 102 |
| 220 | 221 | 0.79 | 30 | 9 | 21.0 | 92 |
| 270 | 271 | 0.79 | 30 | 8 | 25.0 | 84 |
| 330 | 331 | 0.79 | 30 | 7 | 28.0 | 79 |
| 390 | 391 | 0.79 | 30 | 6.5 | 35.0 | 71 |
| 470 | 471 | 0.79 | 30 | 6 | 42.0 | 65 |
| 560 | 561 | 0.79 | 30 | 5 | 46.0 | 62 |
| 680 | 681 | 0.79 | 30 | 4 | 60.0 | 54 |
| 820 | 821 | 0.79 | 30 | 3.8 | 65.0 | 52 |
| 1000 | 102 | 0.79 | 30 | 3.4 | 72.0 | 49 |

The SC30 Series was formerly the TE Connectivity C30 Series

Type SC10, SC15, SC30, SC55 Series

Characteristics - Electrical Type SC55

| Inductance Value (μ H) | Inductance Code | Q Min. | Test Freq MHz | S.R.F. MHz Min. | Max. DC Resistance Ohms | Direct Current at 85°C Max. mA | Body Marking |
|-----------------------------|-----------------|--------|---------------|-----------------|-------------------------|--------------------------------|--------------|
| 1.0 | 1R0 | 45 | 7.9 | 190.0 | 0.04 | 2200 | 1uH0-K |
| 1.5 | 1R5 | 65 | 7.9 | 155.0 | 0.05 | 2000 | 1uH5-K |
| 2.2 | 2R2 | 60 | 7.9 | 130.0 | 0.06 | 1800 | 2uH2-K |
| 3.3 | 3R3 | 50 | 7.9 | 110.0 | 0.07 | 1700 | 3uH3-K |
| 4.7 | 4R7 | 50 | 7.9 | 95.0 | 0.12 | 1300 | 4uH7-K |
| 6.8 | 6R8 | 60 | 7.9 | 85.0 | 0.22 | 1000 | 6uH8-K |
| 10 | 100 | 50 | 7.9 | 65.0 | 0.35 | 750 | 10uH-K |
| 15 | 150 | 55 | 2.5 | 55.0 | 0.60 | 600 | 15uH-K |
| 22 | 220 | 65 | 2.5 | 45.0 | 1.10 | 430 | 22uH-K |
| 33 | 330 | 85 | 2.5 | 35.0 | 2.00 | 300 | 33uH-K |
| 47 | 470 | 70 | 2.5 | 20.0 | 2.50 | 270 | 47uH-K |
| 68 | 680 | 65 | 2.5 | 16.0 | 3.00 | 250 | 68uH-K |
| 100 | 101 | 65 | 2.5 | 14.0 | 4.00 | 220 | mH10-K |
| 150 | 151 | 80 | 0.79 | 9.5 | 5.80 | 230 | mH15-K |
| 220 | 221 | 80 | 0.79 | 8.0 | 7.30 | 200 | mH22-K |
| 330 | 331 | 80 | 0.79 | 7.5 | 12.00 | 160 | mH33-K |
| 470 | 471 | 80 | 0.79 | 6.5 | 20.00 | 120 | mH47-K |
| 680 | 681 | 85 | 0.79 | 5.0 | 24.00 | 110 | mH68-K |
| 1000 | 102 | 85 | 0.79 | 3.0 | 30.00 | 100 | 1mH0-K |

How to Order

| SC30 | 104 | K | T |
|------------------------------|---------------------------------------|------------------|-----------------------------|
| Common Part | Inductance Value | Tolerance | Packaging |
| SC10 SC15 SC30 SC55 | Please state code given in data above | K - 10% | R - Reeled T - Ammo Pack |

TE Connectivity, TE connectivity (logo) and TE (logo) are trademarks.
Other logos, product and Company names mentioned herein may be trademarks of their respective owners.

While TE has made every reasonable effort to ensure the accuracy of the information in this datasheet, TE does not guarantee that it is error-free, nor does TE make any other representation, warranty or guarantee that the information is accurate, correct, reliable or current. TE reserves the right to make any adjustments to the information contained herein at any time without notice. TE expressly disclaims all implied warranties regarding the information contained herein, including, but not limited to, any implied warranties of merchantability or fitness for a particular purpose. The dimensions in this datasheet are for reference purposes only and are subject to change without notice. Specifications are subject to change without notice. Consult TE for the latest dimensions and design specifications.