



Chipsmall Limited consists of a professional team with an average of over 10 year of expertise in the distribution of electronic components. Based in Hongkong, we have already established firm and mutual-benefit business relationships with customers from,Europe,America and south Asia,supplying obsolete and hard-to-find components to meet their specific needs.

With the principle of “Quality Parts,Customers Priority,Honest Operation,and Considerate Service”,our business mainly focus on the distribution of electronic components. Line cards we deal with include Microchip,ALPS,ROHM,Xilinx,Pulse,ON,Everlight and Freescale. Main products comprise IC,Modules,Potentiometer,IC Socket,Relay,Connector.Our parts cover such applications as commercial,industrial, and automotives areas.

We are looking forward to setting up business relationship with you and hope to provide you with the best service and solution. Let us make a better world for our industry!



Contact us

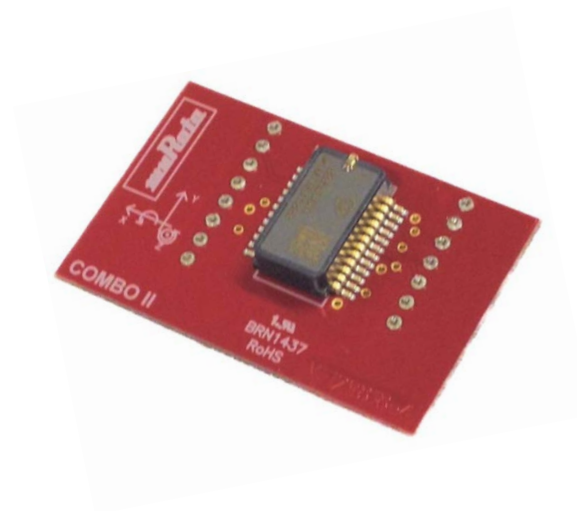
Tel: +86-755-8981 8866 Fax: +86-755-8427 6832

Email & Skype: info@chipsmall.com Web: www.chipsmall.com

Address: A1208, Overseas Decoration Building, #122 Zhenhua RD., Futian, Shenzhen, China



SCC2000 SERIES PCB SPECIFICATION



Doc. No. 82 2057 00 Rev. A

1 SCC2000 Series Chip Carrier PCB

The purpose of SCC2000 series PCB is to enable fast prototyping.

SCC2000 series PCB includes

- SCC2000 series sensor soldered on PCB
- PCB design # 29818 with pin headers
- Connectors and passive components

Refer to corresponding component specific datasheet when using the SCC2000 series PCB.

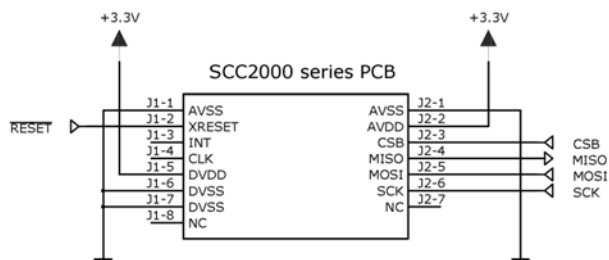


Figure 1. SCC2000 series PCB pin out and external connections.

Table 1. BOM of the SCC2000 series PCB.

Item	Qty	Ref	Part Name / type	Value
1	1	C1	Capacitor 0603	470 nF, 50V
2	3	C2-3, C5	Capacitor 0805	1 μ F
3	1	C4	Capacitor 0603	100 nF
4	2	C6-7	Capacitor 1210	47 μ F
			Optional, assembled with SCC2230-E02 and SCC2130-D08	
5	1	L1	Inductor 1210, Bourns CM322522-470KL	47 μ H
6	1	U1	SCC2000 series Gyro Accelerometer Combo	
7	1	J1	8-pin through hole pin header, pitch 100 mils, pin size 0.63x0.63mm, length ~5.85mm (example mating part: Samtec: SSQ-107-01-S-S)	
8	1	J2	7-pin through hole pin header, pitch 100 mils, pin size 0.63x0.63mm, length ~5.85mm (example mating part: Samtec: SSQ-108-01-S-S)	

Detailed pictures of SCC2000 series PCB are presented in following pages:

- PCB layout
- Assembly drawings
- Circuit diagram

PCB mechanical dimensions:

- Length 42.9 mm
- Width 27.4 mm
- Height 15.1 mm (incl. components and pin headers)



Figure 2. TOP (left) and BOTTOM (right) layout of SCC2000 series PCB (aspect ratio not 1:1).

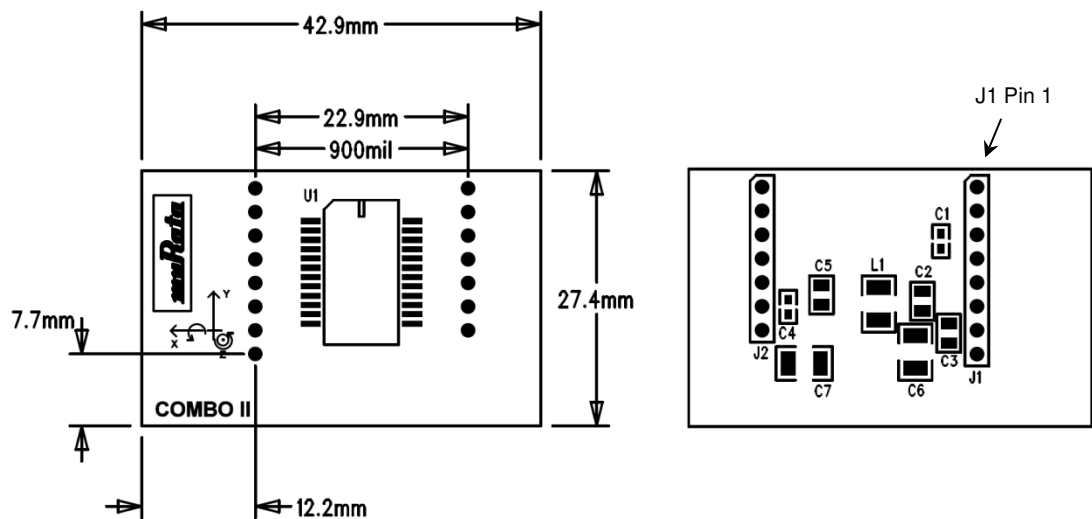


Figure 3. TOP (left) and BOTTOM (right) view assembly drawings for SCC2000 series PCB (aspect ratio not 1:1).

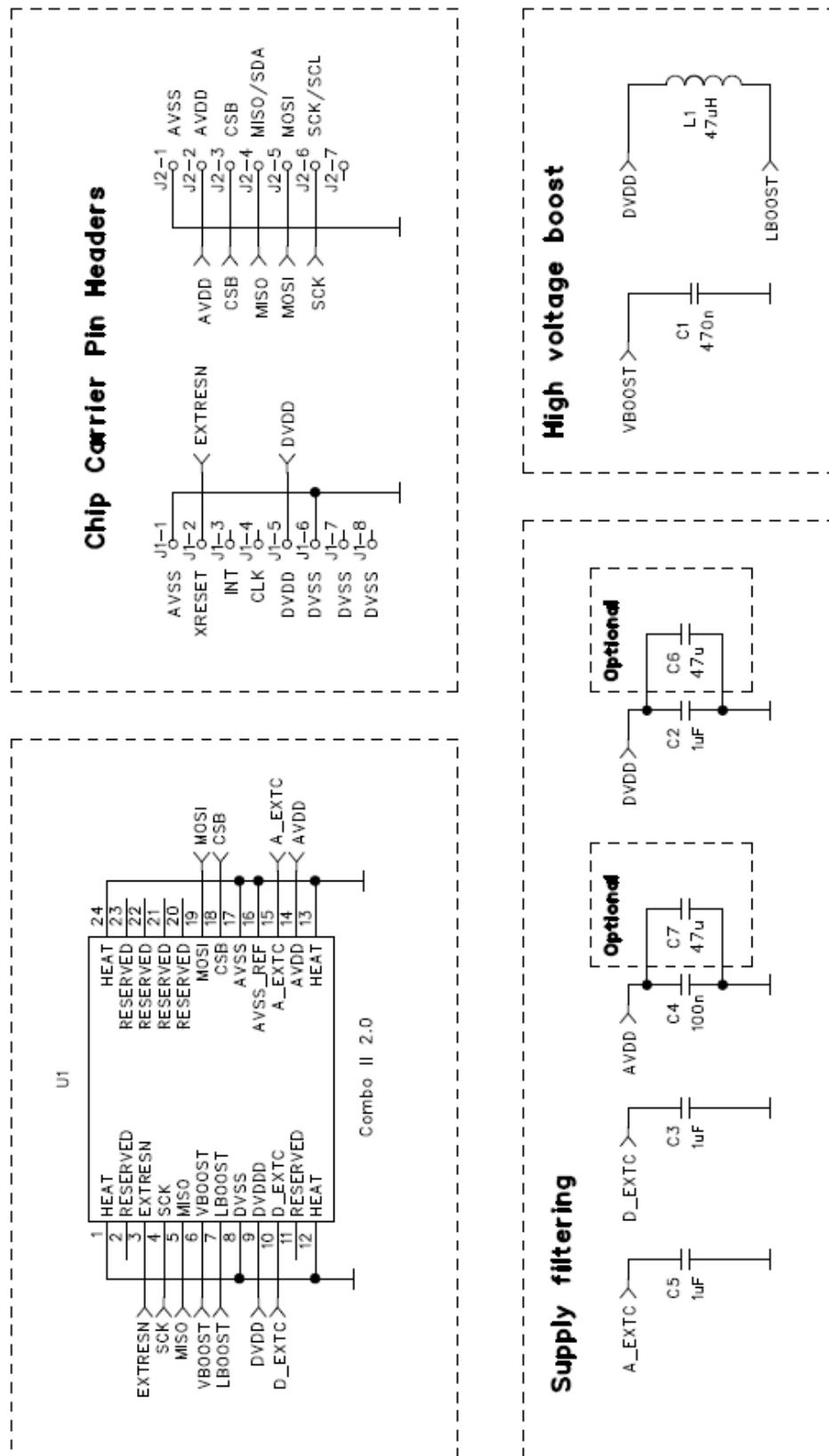


Figure 4. SCC2000 series PCB circuit diagram.