



Chipsmall Limited consists of a professional team with an average of over 10 year of expertise in the distribution of electronic components. Based in Hongkong, we have already established firm and mutual-benefit business relationships with customers from,Europe,America and south Asia,supplying obsolete and hard-to-find components to meet their specific needs.

With the principle of “Quality Parts,Customers Priority,Honest Operation,and Considerate Service”,our business mainly focus on the distribution of electronic components. Line cards we deal with include Microchip,ALPS,ROHM,Xilinx,Pulse,ON,Everlight and Freescale. Main products comprise IC,Modules,Potentiometer,IC Socket,Relay,Connector.Our parts cover such applications as commercial,industrial, and automotives areas.

We are looking forward to setting up business relationship with you and hope to provide you with the best service and solution. Let us make a better world for our industry!



Contact us

Tel: +86-755-8981 8866 Fax: +86-755-8427 6832

Email & Skype: info@chipsmall.com Web: www.chipsmall.com

Address: A1208, Overseas Decoration Building, #122 Zhenhua RD., Futian, Shenzhen, China



CASE FINISH	CURRENT (AMPS)	WORKING VOLTAGE				MAXIMUM DC RESISTANCE (OHMS)	MAXIMUM VOLTAGE DROP		MINIMUM CAPACITANCE (uF)	MIN. INSERTION LOSS PER MIL-STD-220, FULL LOAD, +25°C												
		-55°C TO +85°C		-55°C TO +125°C			DC	AC		14	30	50	75	100	150	300	500	1	10	100	1	10
		AC	DC	AC	DC					KHz	KHz	KHz	KHz	KHz	KHz	KHz	KHz	MHz	MHz	MHz	GHz	GHz
SILVER	15	--	80	--	50	.003	.045	--	1.4	--	15	--	--	--	28	33	--	44	60	--	70	--

PART MARKING:

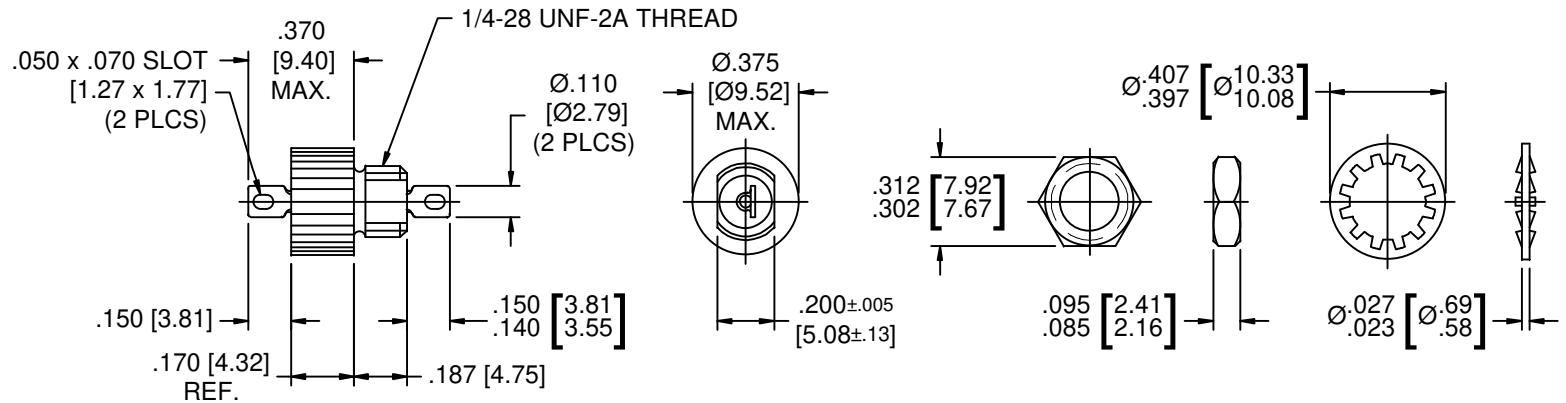
SCIF-1020-000
50 VDC DATE CODE

PACKAGE MARKING:

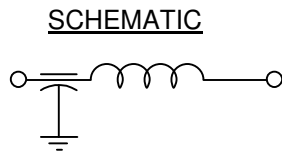
STANDARD

MARKING NOTES:

N/A



MTG. HARDWARE



NOTES:

- 1) MOUNTING TORQUE NOT TO EXCEED 7 in-lbs.



CN 39872-ENG												00	REV.	UNLESS OTHERWISE SPECIFIED DIMENSIONS ARE IN INCHES [MILLIMETERS] DO NOT SCALE	TOLERANCES UNLESS OTHERWISE SPECIFIED Dec. .x ± .x Dec. .xx ± .xx Dec. .xxx ± .010 [.25] Angles ± 0° 30"	SPECTRUM CONTROL INC. Dwn. Hassett Date 2-20-08	Description LOW PASS EMI FILTER
CHANGE NOTICE NO.																	

