



Chipsmall Limited consists of a professional team with an average of over 10 year of expertise in the distribution of electronic components. Based in Hongkong, we have already established firm and mutual-benefit business relationships with customers from,Europe,America and south Asia,supplying obsolete and hard-to-find components to meet their specific needs.

With the principle of “Quality Parts,Customers Priority,Honest Operation,and Considerate Service”,our business mainly focus on the distribution of electronic components. Line cards we deal with include Microchip,ALPS,ROHM,Xilinx,Pulse,ON,Everlight and Freescale. Main products comprise IC,Modules,Potentiometer,IC Socket,Relay,Connector.Our parts cover such applications as commercial,industrial, and automotives areas.

We are looking forward to setting up business relationship with you and hope to provide you with the best service and solution. Let us make a better world for our industry!



Contact us

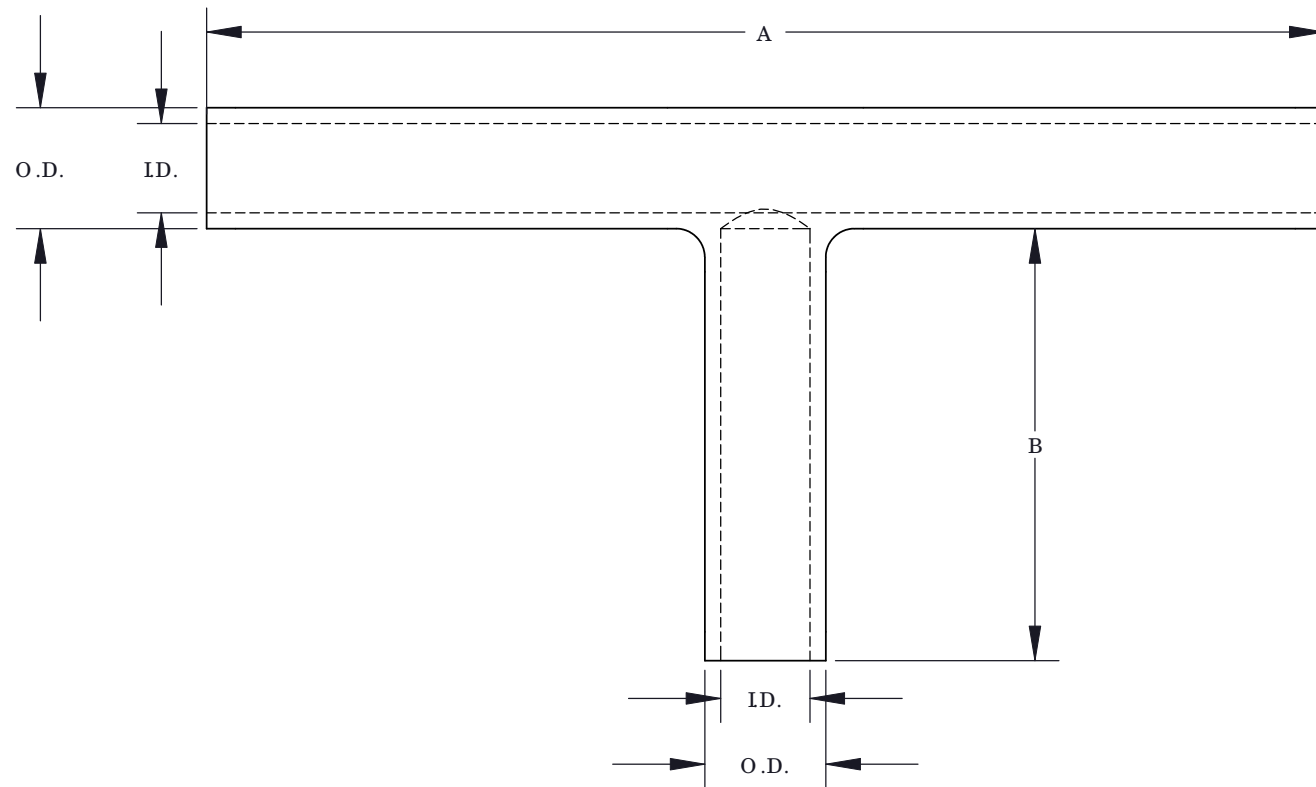
Tel: +86-755-8981 8866 Fax: +86-755-8427 6832

Email & Skype: info@chipsmall.com Web: www.chipsmall.com

Address: A1208, Overseas Decoration Building, #122 Zhenhua RD., Futian, Shenzhen, China



PANDUIT PART NUMBER	CONDUCTOR SIZE		DIMENSIONS IN INCHES						STD PKG QTY
			RUN		TAP		A	B	
	RUN	TAP	I.D.	O.D.	I.D.	O.D.			
SCT2-2	#2 AWG	#2 AWG	0.31	0.42	0.31	0.42	3.89	1.51	1
SCT1/0-1/0	#1/0 AWG	#1/0 AWG	0.39	0.52	0.39	0.52	4.03	1.51	1
SCT2/0-2/0	#2/0 AWG	#2/0 AWG	0.44	0.56	0.44	0.56	4.00	1.51	1
SCT4/0-1/0	#4/0 AWG	#1/0 AWG	0.55	0.69	0.39	0.52	4.01	1.51	1
SCT4/0-4/0	#4/0 AWG	#4/0 AWG	0.55	0.69	0.55	0.69	4.23	1.66	1
SCT250-250	250 kcmil	250 kcmil	0.60	0.75	0.60	0.75	4.26	1.63	1
SCT300-300	300 kcmil	300 kcmil	0.65	0.81	0.65	0.81	5.45	2.04	1
SCT350-350	350 kcmil	350 kcmil	0.70	0.88	0.70	0.88	5.53	2.00	1
SCT500-4/0	500 kcmil	#4/0 AWG	0.82	1.06	0.55	0.69	5.81	2.25	1
SCT500-500	500 kcmil	500 kcmil	0.83	1.06	0.83	1.06	6.06	2.51	1



PANDUIT PART NUMBER	STD WIRE SIZE	WIRE STRIP LENGTH (IN)	TOOL CHART				
			PANDUIT TOOL PART NUMBERS				
			CT-1700***	CT-720	CT-940CH** CT-930 CT-930CH CT-2931 CT-2930/L	CT-980 CT-980CH CT-2950* CT-2980 CT-2981	CT-2001 CT-3001 CT-2002
DIE PART NUMBER/COLOR CODE & DIE INDEX NUMBER/(NUMBER OF CRIMPS)							
SCT2-2	2 AWG	2	BROWN P33 (3)	CD-720-1 BROWN P33 (2)	CD-920-2 BROWN P33 (1)	STD (1)	CD-2001-2 BROWN P33 (2)
	2 AWG	1-9/16		CD-720-2 PINK P42 (2)	CD-920-1/0 PINK P42 (2)	STD (2)	CD-2001-1/0 PINK P42 (2)
SCT1/0-1/0	1/0 AWG	2-1/16	-----	CD-720-2 PINK P42 (2)	CD-920-1/0 PINK P42 (2)	STD (2)	CD-2001-1/0 PINK P42 (2)
	1/0 AWG	1-9/16		CD-720-2 BLACK P45 (3)	CD-920-2/0 BLACK P45 (3)	STD (2)	CD-2001-2/0 BLACK P45 (3)
SCT2/0-2/0	2/0 AWG	2-1/16	-----	CD-720-3 PURPLE P54 (3)	CD-920-4/0 PURPLE P54 (3)	STD (2)	CD-2001-4/0 PURPLE P54 (3)
	2/0 AWG	1-9/16		CD-720-2 PINK P42 (3)	CD-920-1/0 PINK P42 (3)	STD (2)	CD-2001-1/0 PINK P42 (3)
SCT4/0-1/0	4/0 AWG	2-1/16	-----	CD-720-3 PURPLE P54 (3)	CD-920-4/0 PURPLE P54 (3)	STD (2)	CD-2001-4/0 PURPLE P54 (3)
	1/0 AWG	1-9/16		CD-720-2 PINK P42 (3)	CD-920-1/0 PINK P42 (3)	STD (2)	CD-2001-1/0 PINK P42 (3)
SCT4/0-4/0	4/0 AWG	2-1/8	-----	CD-720-3 PURPLE P54 (3)	CD-920-4/0 PURPLE P54 (3)	STD (2)	CD-2001-4/0 PURPLE P54 (3)
	4/0 AWG	1-11/16		CD-720-3 YELLOW P62 (4)	CD-920-250 YELLOW P62 (3)	STD (2)	CD-2001-250 YELLOW P62 (3)
SCT250-250	250 kcmil	2-3/16	-----	CD-720-4 WHITE P66 (4)	CD-920-300 WHITE P66 (3)	STD (3)	CD-2001-300 WHITE P66 (4)
	250 kcmil	1-11/16		CD-720-5 RED P71 (4)	CD-920-350 RED P71 (3)	STD (3)	CD-2001-350 RED P71 (3)
SCT300-300	300 kcmil	2-13/16	-----	CD720-7 BROWN P87 (4)	CD-920-500 BROWN P87 (3)	STD (3)	CD-2001-500 BROWN P87 (4)
	300 kcmil	2-1/16		CD-720-3 PURPLE P54 (4)	CD-920-4/0 PURPLE P54 (4)	STD (3)	CD-2001-4/0 PURPLE P54 (4)
SCT350-350	350 kcmil	2-13/16	-----	CD-720-7 BROWN P87 (4)	CD-920-500 BROWN P87 (3)	STD (3)	CD-2001-500 BROWN P87 (4)
	350 kcmil	2-1/16		CD-720-3 PURPLE P54 (4)	CD-920-4/0 PURPLE P54 (4)	STD (3)	CD-2001-4/0 PURPLE P54 (4)
SCT500-4/0	500 kcmil	2-15/16	-----	CD-720-7 BROWN P87 (4)	CD-920-500 BROWN P87 (3)	STD (3)	CD-2001-500 BROWN P87 (4)
	4/0 AWG	2-5/16		CD-720-3 PURPLE P54 (4)	CD-920-4/0 PURPLE P54 (4)	STD (3)	CD-2001-4/0 PURPLE P54 (4)
SCT500-500	500 kcmil	3-1/8	-----	CD-720-7 BROWN P87 (4)	CD-920-500 BROWN P87 (4)	STD (3)	CD-2001-500 BROWN P87 (4)
	500 kcmil	2-9/16		CD-720-7 BROWN P87 (4)	CD-920-500 BROWN P87 (4)	STD (3)	CD-2001-500 BROWN P87 (4)

*MAXIMUM SIZE: 250 kcmil
 **CD-920 DIES CAN BE USED WITH CT-940CH AND CT-2940 TOOLS WITH CD-940-DA ADAPTER
 *** THE CT-1700 CRIMP DIE POCKETS ARE INTEGRATED INTO THE TOOL FRAME

NOTES:

- MADE FROM PURE ELECTROLYTIC SEAMLESS COPPER TUBING
- HOT TIN DIPPED FOR CORROSIVE RESISTANCE
- NORMAL VOLTAGE RATING 600V

				PANDUIT CORP. TINLEY PARK, ILLINOIS			
				COPPER TSPlice - SCT SERIES CUSTOMER DRAWING			
				UNLESS OTHERWISE SPECIFIED DIMENSIONAL TOLERANCES ARE: (.X) ± (.XXX) ± (.XX) ± ANGLES ±			
				UNLESS OTHERWISE SPECIFIED, ALL DIMENSIONS ARE GIVEN IN INCHES, THIRD ANGLE PROJECTION			
03	3/11	JHNU	JHNU	REVISED RUN I.D. FOR SCT500-4/0, SCT500-500: WAS .84, REVISED RUN O.D. FOR SCT1/0-1/0: WAS .51, REVISED TAP I.D. FOR SCT500-500: WAS .84, REVISED TAP O.D. FOR SCT1/0-1/0, SCT2/0-1/0: WAS .51, REVISED A DIM FOR SCT2-2: WAS 3.88, REVISED A DIM FOR SCT1/0-1/0, SCT2/0-1/0: WAS 4.00, REVISED A DIM FOR SCT2/0-4/0: WAS 4.19, REVISED A DIM FOR SCT250-250: WAS 4.25, REVISED A DIM FOR SCT300-300: WAS 5.44, REVISED A DIM FOR SCT350-350: WAS 5.50, REVISED B DIM FOR SCT2-2, SCT1/0-1/0, SCT2/0-2/0, SCT2/0-1/0: WAS 1.50, REVISED B DIM FOR SCT2/0-4/0: WAS 1.63, REVISED B DIM FOR SCT300-300: WAS 2.00, REVISED B DIM FOR SCT500-500: WAS 2.50	N41199BB-C41199	FLD	FLD
02	3/10	JHNU	JHNU	REVISED DIE FOR CT2001, P/N SCT4/0-1/0: PURPLE 54 WAS ORANGE 50			
01	3/10	JHNU	JHNU	REVISED DIE FOR SCT2/0-1/0: PURPLE 54 WAS ORANGE 50 CONVERTED DWG TO SOLIDWORKS			
00	8/96	T SMA		DRAWING RELEASED			
REV	DATE	BY	CHK	DESCRIPTION	ECN	-R	SUP
							CHK'D
				DRAWN BY T SMA		DATE 8/96	
				SCALE NONE		DRAWING NO / CAD FILE C41199_03	
				DWG B SIZE			