



Chipsmall Limited consists of a professional team with an average of over 10 year of expertise in the distribution of electronic components. Based in Hongkong, we have already established firm and mutual-benefit business relationships with customers from,Europe,America and south Asia,supplying obsolete and hard-to-find components to meet their specific needs.

With the principle of "Quality Parts,Customers Priority,Honest Operation,and Considerate Service",our business mainly focus on the distribution of electronic components. Line cards we deal with include Microchip,ALPS,ROHM,Xilinx,Pulse,ON,Everlight and Freescale. Main products comprise IC,Modules,Potentiometer,IC Socket,Relay,Connector.Our parts cover such applications as commercial,industrial, and automotives areas.

We are looking forward to setting up business relationship with you and hope to provide you with the best service and solution. Let us make a better world for our industry!



Contact us

Tel: +86-755-8981 8866 Fax: +86-755-8427 6832

Email & Skype: info@chipsmall.com Web: www.chipsmall.com

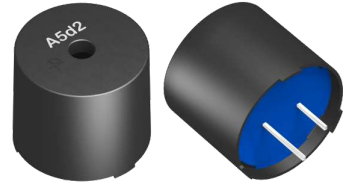
Address: A1208, Overseas Decoration Building, #122 Zhenhua RD., Futian, Shenzhen, China



SD1614T5-B5ME



Applications	Automotive Grade
Series	SD
Status	Production
Terminal Shape	Pin Terminal



Size	
Dimension	D16.0 x H14.0
Terminal Pitch	7.60mm Nom.

Electrical Characteristics	
Sound Pressure Level (Min.)	85dB
Frequency	2.048kHz
Rated Input Voltage	5V0-p
Sound Pressure Level vs. Frequency	Please refer to the catalog

Other	
Operating Temperature Range	-40 to 85°C
Soldering Method	Wave (Flow)
	Iron Soldering
Packing	Bulk(Plastic tray)
Package Quantity	480pcs
Weight per pc	4g

! Images are for reference only and show exemplary products.
! This PDF document was created based on the data listed on the TDK Corporation website.
! All specifications are subject to change without notice.