



Chipsmall Limited consists of a professional team with an average of over 10 year of expertise in the distribution of electronic components. Based in Hongkong, we have already established firm and mutual-benefit business relationships with customers from,Europe,America and south Asia,supplying obsolete and hard-to-find components to meet their specific needs.

With the principle of “Quality Parts,Customers Priority,Honest Operation,and Considerate Service”,our business mainly focus on the distribution of electronic components. Line cards we deal with include Microchip,ALPS,ROHM,Xilinx,Pulse,ON,Everlight and Freescale. Main products comprise IC,Modules,Potentiometer,IC Socket,Relay,Connector.Our parts cover such applications as commercial,industrial, and automotives areas.

We are looking forward to setting up business relationship with you and hope to provide you with the best service and solution. Let us make a better world for our industry!



Contact us

Tel: +86-755-8981 8866 Fax: +86-755-8427 6832

Email & Skype: info@chipsmall.com Web: www.chipsmall.com

Address: A1208, Overseas Decoration Building, #122 Zhenhua RD., Futian, Shenzhen, China



Description

The SDAH02 Evaluation Kit is used to assess the HS3001 High-Performance Relative Humidity and Temperature Sensor in a typical application. The battery-operated portable sensing system enables users to easily monitor the ambient relative humidity and temperature via the LCD display. A single button can be used to select different modes and plot data. The plots show relative humidity or temperature readings versus time.

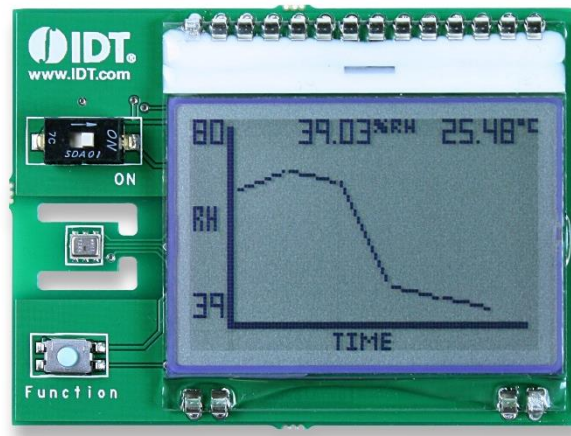
Kit Contents

- SDAH02 Evaluation Board
- CR1632 3V Battery
- *Quick Start Guide*

Features

- SDAH02 Evaluation Board with LCD display
- HS3001 Relative Humidity and Temperature Sensor mounted on the Evaluation Board:
 - RH accuracy: $\pm 1.5\%RH$
 - Operating temperature: -40 to $105^{\circ}C$
- LCD display modes:
 - Relative humidity and temperature reading
 - Relative humidity versus time
 - Temperature reading versus time

SDAH02 Evaluation Kit



Important Notes

Disclaimer

Integrated Device Technology, Inc. and its affiliated companies (herein referred to as "IDT") shall not be liable for any damages arising out of defects resulting from

- (i) delivered hardware or software
- (ii) non-observance of instructions contained in this manual and in any other documentation provided to user, or
- (iii) misuse, abuse, use under abnormal conditions, or alteration by anyone other than IDT.

TO THE EXTENT PERMITTED BY LAW, IDT HEREBY EXPRESSLY DISCLAIMS AND USER EXPRESSLY WAIVES ANY AND ALL WARRANTIES, WHETHER EXPRESS, IMPLIED, OR STATUTORY, INCLUDING, WITHOUT LIMITATION, IMPLIED WARRANTIES OF MERCHANTABILITY AND OF FITNESS FOR A PARTICULAR PURPOSE, STATUTORY WARRANTY OF NON-INFRINGEMENT, AND ANY OTHER WARRANTY THAT MAY ARISE BY REASON OF USAGE OF TRADE, CUSTOM, OR COURSE OF DEALING.

Restrictions in Use

IDT's SDAH02 Evaluation Kit, consisting of the SDAH02 Evaluation Board, battery, and documentation, is only designed to provide a quick setup for taking RH% and temperature measurements with the HS3001. IDT's SDAH02 Evaluation Kit must not be used for any mission-critical applications or measurement reference source.

Contents

1. Setup	3
1.1 Kit Hardware Setup	3
1.1.1 Installing the Battery	3
2. Usage Guide	3
2.1 Measurement Settings	3
3. Ordering Information	4
4. Revision History	4

List of Figures

Figure 1. Battery Holder on the Backside of the SDAH02 Evaluation Board	3
Figure 2. SDAH02 Portable Sensing System – Relative Humidity and Temperature Readings Mode	3
Figure 3. SDAH02 Portable Sensing System – Plotting Modes	4

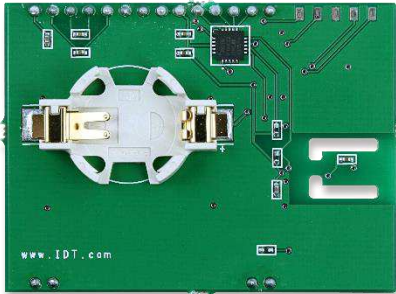
1. Setup

1.1 Kit Hardware Setup

1.1.1 Installing the Battery

A CR1632 battery is included with the kit. Insert the battery in the battery holder on the back of the board with the positive battery terminal facing away from the board

Figure 1. Battery Holder on the Backside of the SDAH02 Evaluation Board



2. Usage Guide

After the kit is turned on in the following steps, three different modes can be selected and displayed on the LCD: relative humidity and temperature readings; relative humidity versus time; and temperature reading versus time.

2.1 Measurement Settings

The following steps describe basic kit operation (see Figure 2):

1. Turn on the system by sliding the power switch to the “ON” position. Once the system is activated, the ambient relative humidity and temperature reading will be displayed.
2. Press the “Function” button to cycle through the different modes for the display (see Figure 2 and Figure 3).

Figure 2. SDAH02 Portable Sensing System – Relative Humidity and Temperature Readings Mode

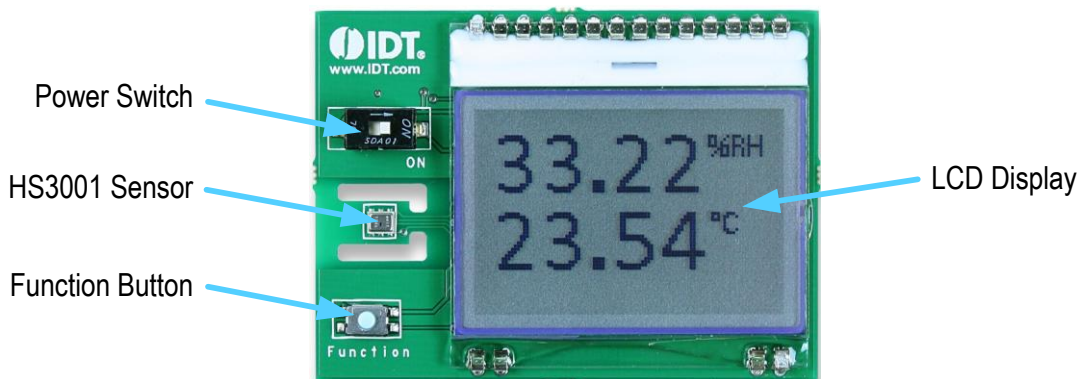
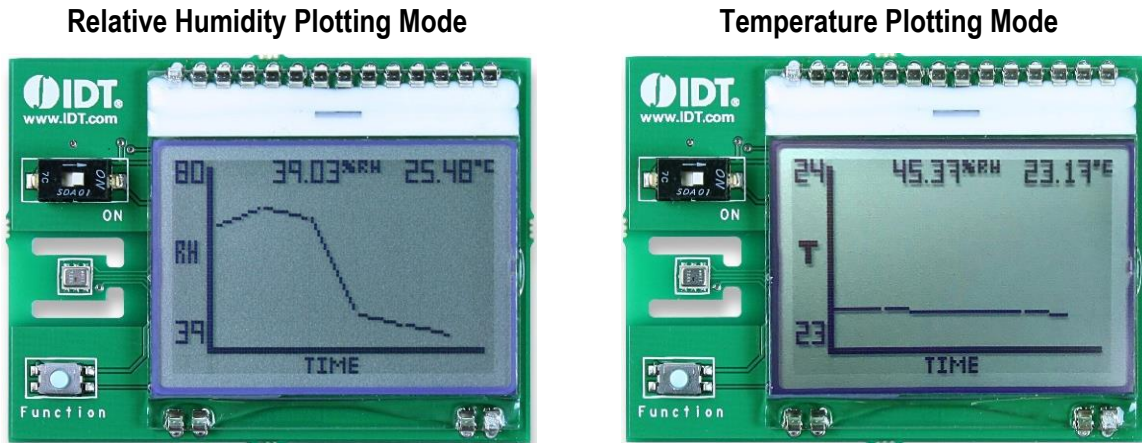


Figure 3. SDAH02 Portable Sensing System – Plotting Modes


3. Ordering Information

Orderable Part Number	Description
SDAH02	SDAH02 Evaluation Kit, including SDAH02 Evaluation Board with LCD, CR1632 battery, <i>Quick Start Guide</i>

4. Revision History

Revision Date	Description of Change
November 17, 2017	Initial release.



Corporate Headquarters
 6024 Silver Creek Valley Road
 San Jose, CA 95138
www.IDT.com

Sales
 1-800-345-7015 or 408-284-8200
 Fax: 408-284-2775
www.IDT.com/go/sales

Tech Support
www.IDT.com/go/support

DISCLAIMER Integrated Device Technology, Inc. (IDT) and its affiliated companies (herein referred to as "IDT") reserve the right to modify the products and/or specifications described herein at any time, without notice, at IDT's sole discretion. Performance specifications and operating parameters of the described products are determined in an independent state and are not guaranteed to perform the same way when installed in customer products. The information contained herein is provided without representation or warranty of any kind, whether express or implied, including, but not limited to, the suitability of IDT's products for any particular purpose, an implied warranty of merchantability, or non-infringement of the intellectual property rights of others. This document is presented only as a guide and does not convey any license under intellectual property rights of IDT or any third parties.

IDT's products are not intended for use in applications involving extreme environmental conditions or in life support systems or similar devices where the failure or malfunction of an IDT product can be reasonably expected to significantly affect the health or safety of users. Anyone using an IDT product in such a manner does so at their own risk, absent an express, written agreement by IDT.

Integrated Device Technology, IDT and the IDT logo are trademarks or registered trademarks of IDT and its subsidiaries in the United States and other countries. Other trademarks used herein are the property of IDT or their respective third party owners. For datasheet type definitions and a glossary of common terms, visit www.idt.com/go/glossary. All contents of this document are copyright of Integrated Device Technology, Inc. All rights reserved.