



Chipsmall Limited consists of a professional team with an average of over 10 year of expertise in the distribution of electronic components. Based in Hongkong, we have already established firm and mutual-benefit business relationships with customers from,Europe,America and south Asia,supplying obsolete and hard-to-find components to meet their specific needs.

With the principle of “Quality Parts,Customers Priority,Honest Operation,and Considerate Service”,our business mainly focus on the distribution of electronic components. Line cards we deal with include Microchip,ALPS,ROHM,Xilinx,Pulse,ON,Everlight and Freescale. Main products comprise IC,Modules,Potentiometer,IC Socket,Relay,Connector.Our parts cover such applications as commercial,industrial, and automotives areas.

We are looking forward to setting up business relationship with you and hope to provide you with the best service and solution. Let us make a better world for our industry!



Contact us

Tel: +86-755-8981 8866 Fax: +86-755-8427 6832

Email & Skype: info@chipsmall.com Web: www.chipsmall.com

Address: A1208, Overseas Decoration Building, #122 Zhenhua RD., Futian, Shenzhen, China





Innovative **Technology**
for a **Connected** World

ZB2430

Quick Start Guide

OVERVIEW

This document is designed as a quick start guide for the Laird Technologies OEM ZB2430 family System Developer Kit (SDK). This guide will take you through the basics of reading the radio's configuration and performing a data throughput test between the Coordinator and a Router. For more detailed information on these steps refer to the SDK User Manual or the radio User Manual.

INSTALL SOFTWARE

Insert the Laird Technologies CD which came with the SDK into a Windows XP PC.

Install the OEM Configuration Utility under Design Kits and Software and follow the on-screen instructions.

CONNECT THE RADIOS TO THE PC

Connect the Coordinator to the PC with the provided USB cable. Make sure the power switch on the SDK board is on and allow Windows to automatically install the appropriate drivers. If using a module with a U.FL connector, connect the antenna.

Connect the AC power adapter to the Router eval board and power on the board with the power switch. Place the J9 Jumper to Loopback Mode. If using a module with a U.FL connector, connect the antenna. Place the Router board at least 5 feet from the Coordinator board.

At this point, the application should be installed on the associated PCs, the SDK board(s) should be properly connected to the PC(s), and the jumpers and power switch should be properly positioned.

global solutions: local support™

USA: +1.800.492.2320

Europe: +44.1628.858.940

Asia: +852.2268.6567

wirelessinfo@lairdtech.com

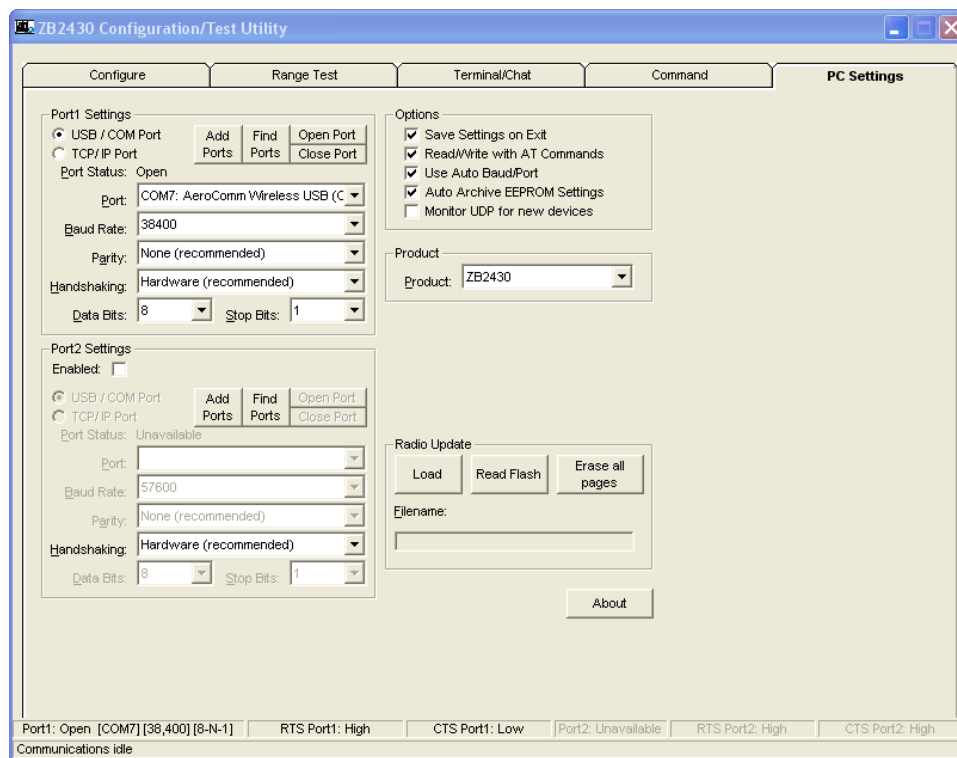
www.lairdtech.com/wireless

QUICK START GUIDE

RADIO CONFIGURATION

1. Launch the Laird OEM software application by navigating to and selecting the product as follows:
Start>All Programs>Laird Tech Wireless>Laird OEM.exe.
2. Click on the PC Settings tab at the top of the application window.
3. Locate the Product drop-down menu and select the ZB2430.
4. Locate and click on the Find Ports button.
5. A dialog box will appear with notification of the number of ports found. Click the OK button.
6. Locate the Port field and select the AeroComm Wireless USB port.
7. Change the Baud Rate to 38400.

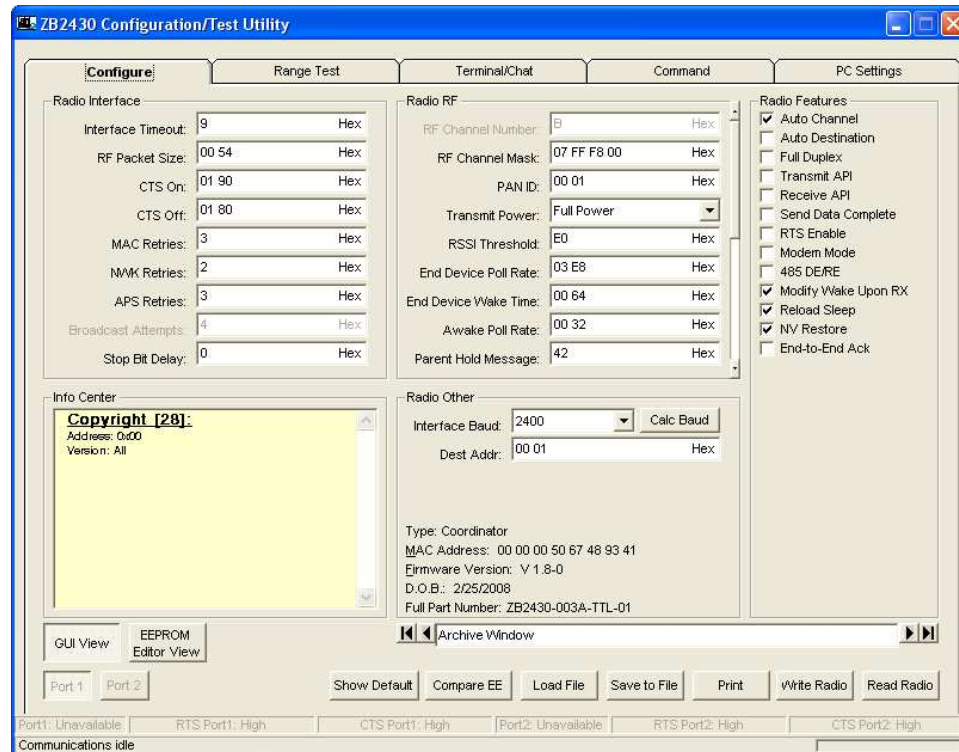
PC SETTINGS TAB



RADIO CONFIGURATION

8. Click on the Configure tab.
9. Click on the Read Radio button; this will display the modules internal configuration.
You can use this screen to make changes and write those changes to the module.
10. A dialog box will appear and will display one of two messages:
 - a. If "Read Successful" is displayed, click on OK and continue to step 12.
 - b. If "Unable to enter command mode. Would you like to try using Auto Baud?" is displayed, follow these steps:
 - 1) Move the J9 jumper to the Force 9600 Baud position.
 - 2) Reset the radio module with the Reset button on the SDK
 - 3) In the OEM software go to the PC Settings Tab and change the baud rate to 9600
 - 4) Change back to the Configure Tab
 - 5) Click on the Read Radio button again.
 - 6) The Interface Baud field will now display the Baud setting of the module.
 - 7) Move the J9 jumper back to the Normal Operation position.
 - 8) Click on the PC Settings tab.
 - 9) Locate the Baud Rate field and set it to match the Baud setting of the module.
 - 10) Click on the Configure tab.
 - 11) Go back to step 10.

CONFIGURE TAB

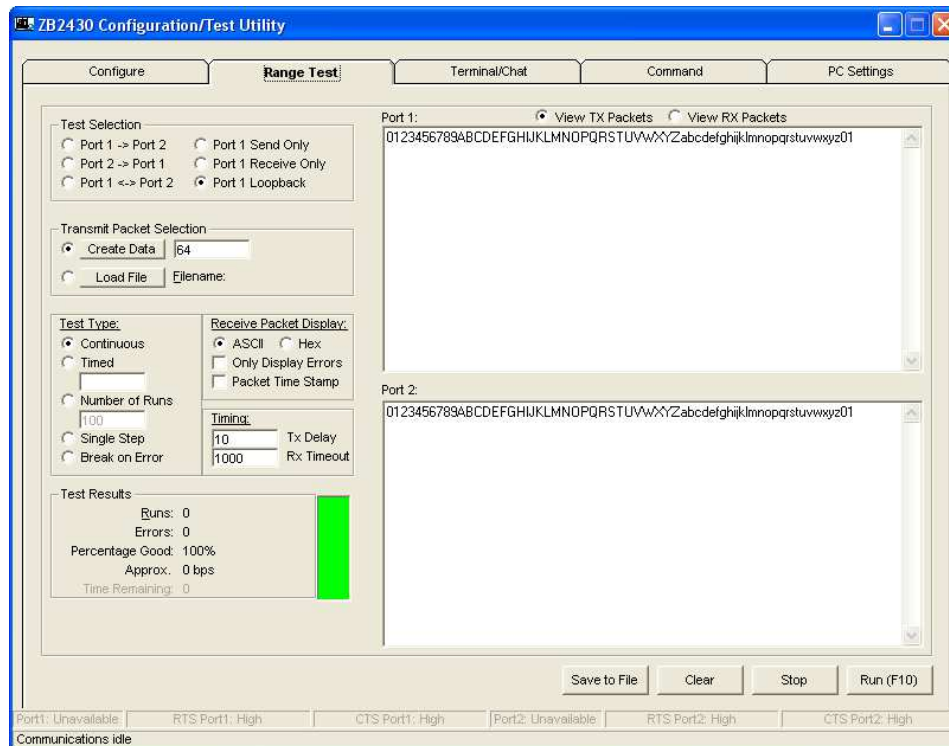


QUICK START GUIDE

RANGE TEST

11. Click on the Range Test tab.
12. Select the desired Port 1 Loopback in the Test Selection field.
13. Click on the Create Data button in the Transmit Packet Selection field. Enter the desired data.
14. Make sure that Continuous is selected in the Test Type field.
15. Set the TX Delay to 1000 and the RX Timeout to 2000 in the Timing field.
16. Click on the Run button or press F10 on the keyboard.
17. Range test, and radio setup is now complete.

RANGE TEST TAB



LWS-QSG-ZB2430 0309

Any information furnished by Laird Technologies and its agents is believed to be accurate and reliable. Responsibility for the use and application of Laird Technologies materials rests with the end user since Laird Technologies and its agents cannot be aware of all potential uses. Laird Technologies makes no warranties as to the fitness, merchantability, or suitability of any Laird Technologies materials or products for any specific or general uses. Laird Technologies shall not be liable for incidental or consequential damages of any kind. All Laird Technologies products are sold pursuant to the Laird Technologies terms and conditions of sale in effect from time to time, a copy of which will be furnished upon request. For further information please visit our website at www.lairdtech.com. Alternatively contact: wirelessinfo@lairdtech.com. Bluetooth® is a trademark owned by Bluetooth SIG, Inc., USA and licensed to Laird Technologies.

© 2009 All Rights Reserved. Laird Technologies is a registered trademark of Laird Technologies, Inc.