



Chipsmall Limited consists of a professional team with an average of over 10 year of expertise in the distribution of electronic components. Based in Hongkong, we have already established firm and mutual-benefit business relationships with customers from,Europe,America and south Asia,supplying obsolete and hard-to-find components to meet their specific needs.

With the principle of “Quality Parts,Customers Priority,Honest Operation,and Considerate Service”,our business mainly focus on the distribution of electronic components. Line cards we deal with include Microchip,ALPS,ROHM,Xilinx,Pulse,ON,Everlight and Freescale. Main products comprise IC,Modules,Potentiometer,IC Socket,Relay,Connector.Our parts cover such applications as commercial,industrial, and automotives areas.

We are looking forward to setting up business relationship with you and hope to provide you with the best service and solution. Let us make a better world for our industry!



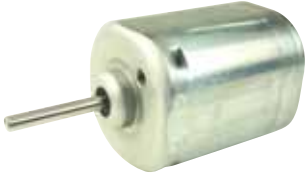
Contact us

Tel: +86-755-8981 8866 Fax: +86-755-8427 6832

Email & Skype: info@chipsmall.com Web: www.chipsmall.com

Address: A1208, Overseas Decoration Building, #122 Zhenhua RD., Futian, Shenzhen, China

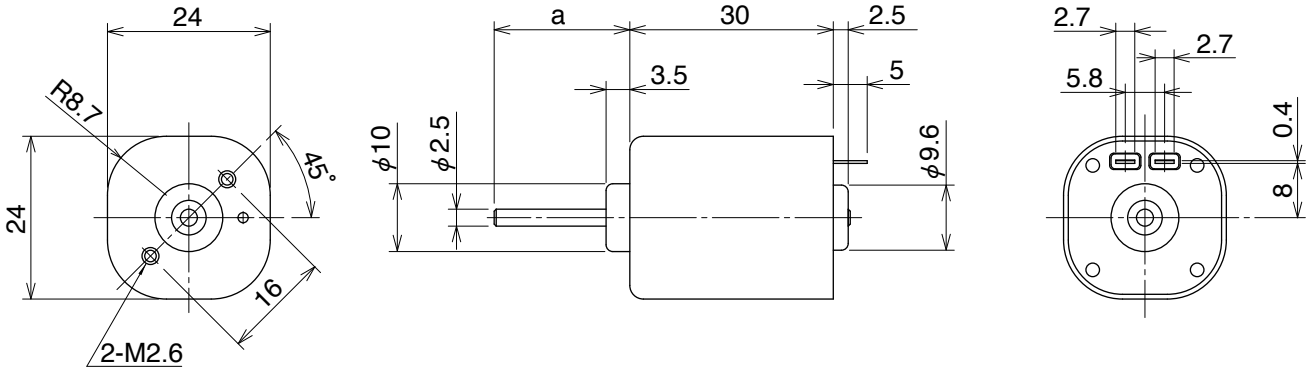




SE24M

■ モータ外觀寸法 External Dimensions

Weight:56g



a=15mm、20mm、25mm

Unit:mm

■ 参考特性 Reference Characteristics

| 型式 Model | 電圧 Voltage | | 無負荷 No Load | | 定格負荷 Rated Load | | 定格負荷 Rated Load | | 起動トルク Starting Torque | | 起動電流 Starting Current |
|-------------|-------------------|---------------|----------------------|---------------|--------------------|--------|----------------------|---------------|--------------------------|--------|--------------------------|
| | 駆動電圧 Operating | 定格電圧 Rated | 回転数 Speed | 電流 Current | | | 回転数 Speed | 電流 Current | | | |
| | (V) | (V) | (min ⁻¹) | (mA) | (gf·cm) | (mN·m) | (min ⁻¹) | (mA) | (gf·cm) | (mN·m) | |
| SE24M1TTC | 8 to 13 | 12.0 | 6433 | 159 | 102 | 10 | 5046 | 772 | 473.1 | 46.4 | 3000 |

■ トルク特性 Torque Characteristics

