



Chipsmall Limited consists of a professional team with an average of over 10 year of expertise in the distribution of electronic components. Based in Hongkong, we have already established firm and mutual-benefit business relationships with customers from,Europe,America and south Asia,supplying obsolete and hard-to-find components to meet their specific needs.

With the principle of "Quality Parts,Customers Priority,Honest Operation,and Considerate Service",our business mainly focus on the distribution of electronic components. Line cards we deal with include Microchip,ALPS,ROHM,Xilinx,Pulse,ON,Everlight and Freescale. Main products comprise IC,Modules,Potentiometer,IC Socket,Relay,Connector.Our parts cover such applications as commercial,industrial, and automotives areas.

We are looking forward to setting up business relationship with you and hope to provide you with the best service and solution. Let us make a better world for our industry!



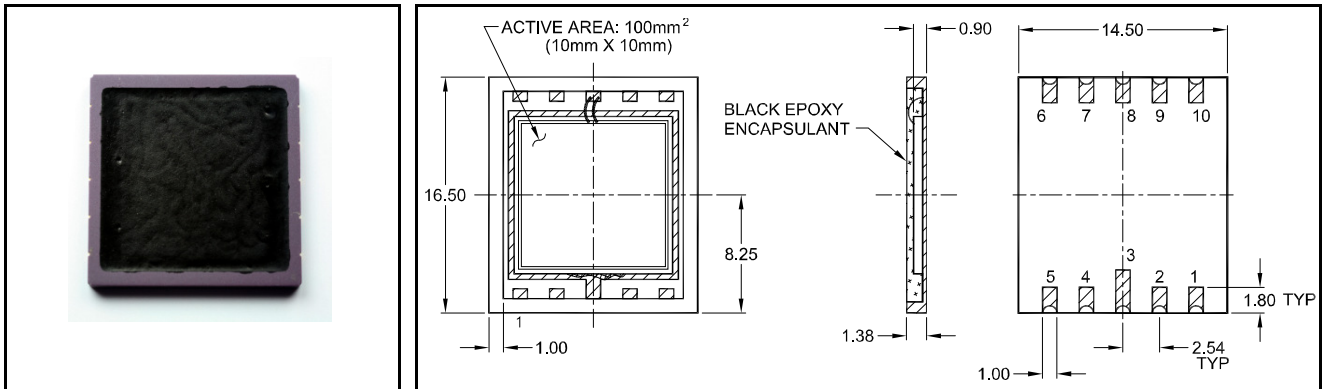
Contact us

Tel: +86-755-8981 8866 Fax: +86-755-8427 6832

Email & Skype: info@chipsmall.com Web: www.chipsmall.com

Address: A1208, Overseas Decoration Building, #122 Zhenhua RD., Futian, Shenzhen, China





Features

- 100 mm² PIN detector
- Light blocking encapsulant
- Low dark current
- Low capacitance
- High shunt resistance
- High sensitivity

Description

Square active area PIN photodiode with 100 mm² active area. Ceramic carrier type LCC10 package with light blocking black epoxy encapsulant. Reflow solderable. Non-hermetic.

Application

- Ionizing radiation detector
- Medical equipment
- Personal dosimeter

RoHS

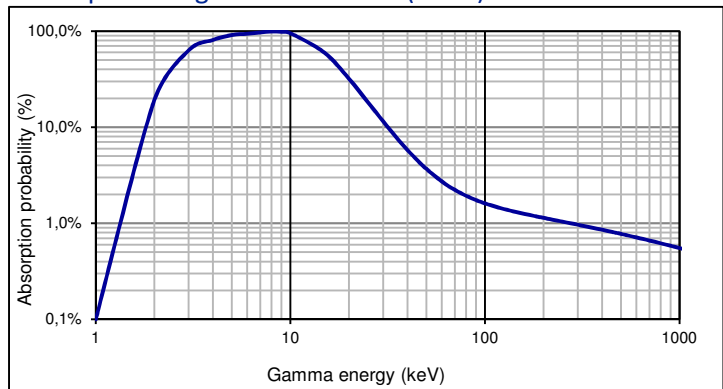
2002/95/EC



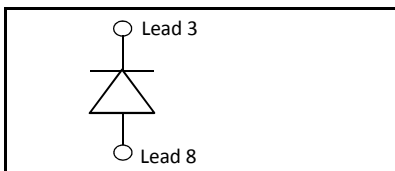
Absolute maximum ratings

Symbol	Parameter	Min	Max	Unit
T _{STG}	Storage temp	-40	100	°C
T _{OP}	Operating temp	-20	70	°C
V _{max}	Max reverse voltage		50	V
I _{PEAK}	Peak DC current		10	mA

Absorption of gamma radiation (23 °C)



Schematic



Electro-optical characteristics @ 23 °C

Symbol	Characteristic	Test Condition	Min	Typ	Max	Unit
	Active area			10 x 10		mm
	Active area			100		mm ²
	Energy range of detectable radiation	Gamma radiation	5		1000	keV
I _D	Dark current	V _R = 12 V		1.5	3	nA
T _K (I _D)	Temperature coefficient	V _R = 12 V; change of dark current		13		%/K
C	Capacitance	V _R = 0 V; f = 10 kHz		500		pF
		V _R = 12 V; f = 10 kHz		80		pF
t _R	Rise time	V _R = 12 V; E = 10 keV; R _L = 50 Ω			500	ns
	Shunt Resistance	V _R = 10 mV		40		MΩ
	Noise current	V _R = 12 V		6.1 E-14		A/√Hz
V _{BR}	Breakdown voltage	I _R = 2 μA	50	80		V

European, International Sales:



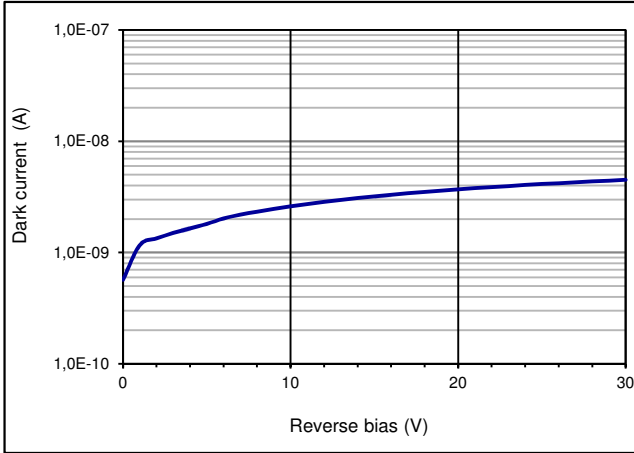
First Sensor AG
 Peter-Behrens-Strasse 15
 12459 Berlin
 Germany
 T +49 30 6399 2399
 F +49 30 639923-752
 sales.opto@first-sensor.com

USA:

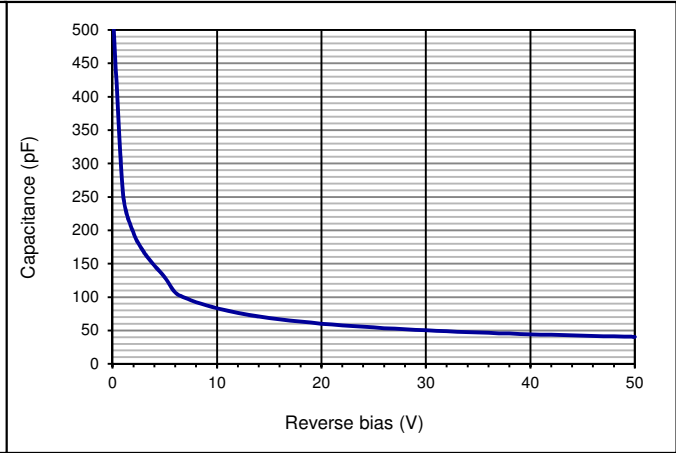


First Sensor Inc.
 5700 Corsa Avenue #105
 Westlake Village
 CA 91362 USA
 T +1 818 706 3400
 F +1 818 889 7053
 sales.us@first-sensor.com

Dark current (23 °C)



Capacitance as fct of reverse bias (23 °C)



Package dimension:

Small quantities: Foam pad, boxed (12 cm x 16.5 cm)

Handling:

Please refer to document "Instructions for handling and processing"

Disclaimer: Due to our strive for continuous improvement, specifications are subject to change within our PCN policy according to JESD46C.

European, International Sales:



First Sensor AG
 Peter-Behrens-Strasse 15
 12459 Berlin
 Germany
 T +49 30 6399 2399
 F +49 30 639923-752
 sales.opto@first-sensor.com

USA:



First Sensor Inc.
 5700 Corsa Avenue #105
 Westlake Village
 CA 91362 USA
 T +1 818 706 3400
 F +1 818 889 7053
 sales.us@first-sensor.com