



Chipsmall Limited consists of a professional team with an average of over 10 year of expertise in the distribution of electronic components. Based in Hongkong, we have already established firm and mutual-benefit business relationships with customers from,Europe,America and south Asia,supplying obsolete and hard-to-find components to meet their specific needs.

With the principle of “Quality Parts,Customers Priority,Honest Operation,and Considerate Service”,our business mainly focus on the distribution of electronic components. Line cards we deal with include Microchip,ALPS,ROHM,Xilinx,Pulse,ON,Everlight and Freescale. Main products comprise IC,Modules,Potentiometer,IC Socket,Relay,Connector.Our parts cover such applications as commercial,industrial, and automotives areas.

We are looking forward to setting up business relationship with you and hope to provide you with the best service and solution. Let us make a better world for our industry!



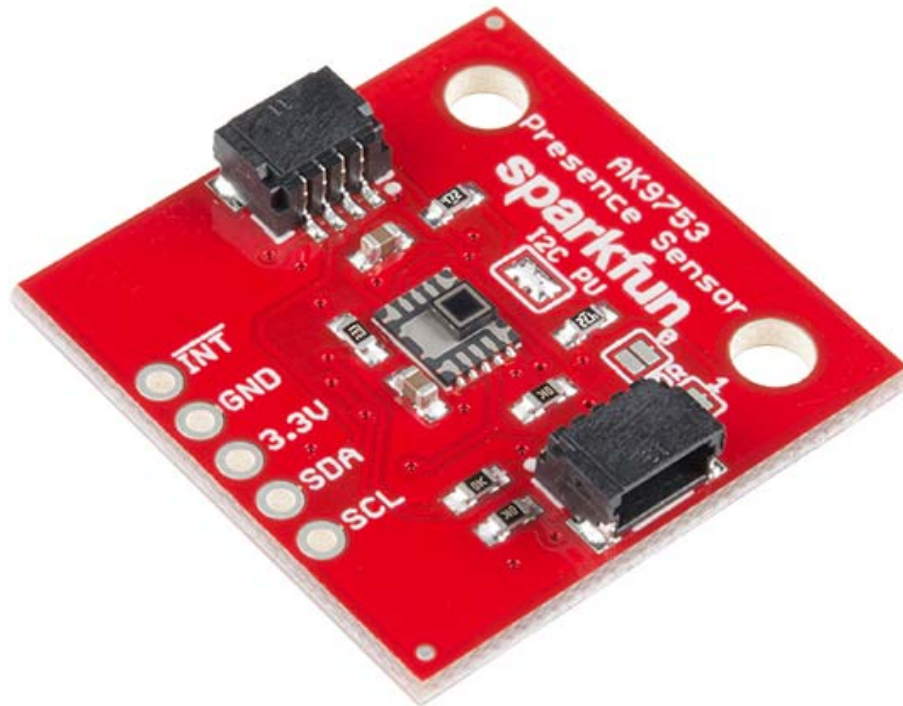
Contact us

Tel: +86-755-8981 8866 Fax: +86-755-8427 6832

Email & Skype: info@chipsmall.com Web: www.chipsmall.com

Address: A1208, Overseas Decoration Building, #122 Zhenhua RD., Futian, Shenzhen, China





SparkFun Human Presence Sensor Breakout - AK9753 (Qwiic)

SEN-14349 ROHS

This is not your normal Passive Infrared (PIR) sensor! The SparkFun AK9753 Human Presence Sensor Breakout is a Qwiic-enabled, 4-channel Nondispersive Infrared (NDIR) sensor. Each channel has a different field of view, so not only can the AK9753 detect a human, but it can also tell which direction the person is moving. To make it even easier to use this breakout, all communication is enacted exclusively via I²C, utilizing our handy Qwiic system. However, we still have broken out 0.1" spaced pins in case you prefer to use a breadboard.

The onboard AK9753 is a digital sensor giving you a 16-bit digital value over I²C. Each of the four sensors outputs the IR current in pico-amps. A PIR reading can vary from roughly -200 (no human present) to 1500 when a human is detected standing in front of a given channel, but it varies due to environmental factors and other heat sources in view. We've written a full library to control the sensor and included examples showing how to output the sensor readings you need, making this breakout even easier to handle!

The SparkFun Qwiic connect system is an ecosystem of I²C sensors, actuators, shields and cables that make prototyping faster and less prone to error. All Qwiic-enabled boards use a common 1mm pitch, 4-pin JST connector. This reduces the amount of required PCB space, and polarized connections mean you can't hook it up wrong.

Features

- Qwiic-Connector Enabled
- Quad infrared sensor module
- 16-bit reading on all four channels
- Digital I²C Interface
- Voltage: 1.7V to 3.3V
- Extremely low current: 100μA

