



Chipsmall Limited consists of a professional team with an average of over 10 year of expertise in the distribution of electronic components. Based in Hongkong, we have already established firm and mutual-benefit business relationships with customers from,Europe,America and south Asia,supplying obsolete and hard-to-find components to meet their specific needs.

With the principle of “Quality Parts,Customers Priority,Honest Operation,and Considerate Service”,our business mainly focus on the distribution of electronic components. Line cards we deal with include Microchip,ALPS,ROHM,Xilinx,Pulse,ON,Everlight and Freescale. Main products comprise IC,Modules,Potentiometer,IC Socket,Relay,Connector.Our parts cover such applications as commercial,industrial, and automotives areas.

We are looking forward to setting up business relationship with you and hope to provide you with the best service and solution. Let us make a better world for our industry!



## Contact us

Tel: +86-755-8981 8866 Fax: +86-755-8427 6832

Email & Skype: info@chipsmall.com Web: www.chipsmall.com

Address: A1208, Overseas Decoration Building, #122 Zhenhua RD., Futian, Shenzhen, China



---

# MindWave Mobile Plus Transition Doc

October 9, 2016

The NeuroSky® product families consist of hardware and software components for simple integration of this biosensor technology into consumer and industrial end-applications. All products are designed and manufactured to meet consumer thresholds for quality, pricing, and feature sets. NeuroSky sets itself apart by providing building block component solutions that offer friendly synergies with related and complementary technological solutions.

**NO WARRANTIES: THE NEUROSKY PRODUCT FAMILIES AND RELATED DOCUMENTATION IS PROVIDED "AS IS" WITHOUT ANY EXPRESS OR IMPLIED WARRANTY OF ANY KIND INCLUDING WARRANTIES OF MERCHANTABILITY, NONINFRINGEMENT OF INTELLECTUAL PROPERTY, INCLUDING PATENTS, COPYRIGHTS OR OTHERWISE, OR FITNESS FOR ANY PARTICULAR PURPOSE. IN NO EVENT SHALL NEUROSKY OR ITS SUPPLIERS BE LIABLE FOR ANY DAMAGES WHATSOEVER (INCLUDING, WITHOUT LIMITATION, DAMAGES FOR LOSS OF PROFITS, BUSINESS INTERRUPTION, COST OF REPLACEMENT GOODS OR LOSS OF OR DAMAGE TO INFORMATION) ARISING OUT OF THE USE OF OR INABILITY TO USE THE NEUROSKY PRODUCTS OR DOCUMENTATION PROVIDED, EVEN IF NEUROSKY HAS BEEN ADVISED OF THE POSSIBILITY OF SUCH DAMAGES. , SOME OF THE ABOVE LIMITATIONS MAY NOT APPLY TO YOU BECAUSE SOME JURISDICTIONS PROHIBIT THE EXCLUSION OR LIMITATION OF LIABILITY FOR CONSEQUENTIAL OR INCIDENTAL DAMAGES.**

**USAGE OF THE NEUROSKY PRODUCTS IS SUBJECT OF AN END-USER LICENSE AGREEMENT.**

**“Made for iPod,” “Made for iPhone,” and “Made for iPad” mean that an electronic accessory has been designed to connect specifically to iPod, iPhone, or iPad, respectively, and has been certified by the developer to meet Apple performance standards. Apple is not responsible for the operation of this device or its compliance with safety and regulatory standards. Please note that the use of this accessory with iPod, iPhone, or iPad may affect wireless performance.**

# Contents

Purpose . . . . .	4
Changes . . . . .	4
Part Number . . . . .	4
Bluetooth Version . . . . .	4
TGAM . . . . .	4
MFi Support . . . . .	4
Frequency . . . . .	5
Power/Pairing Button . . . . .	6
LED Indicator . . . . .	6
CD Version . . . . .	6
Quick Start Guide (QSG) . . . . .	6
Headset Mylar . . . . .	6

## Purpose

This document outlines the differences between the MindWave Mobile and the MindWave Mobile Plus headset.

## Changes

### Part Number

The part number and UPC is changed for all the MindWave Mobile bundles. Please see the updated part list below:

Part Number	Description	UPC
80027-021	MindWave Mobile - Base Packaging w/o Sleeve	852103002449
80027-022	MindWave Mobile - BrainWave Starter Kit	852103002456
80027-023	MindWave Mobile; MyndPlay	852103002463
80027-024	MindWave Mobile; Focus Pocus	852103002470
80027-025	MindWave Mobile; Focus Pocus; CN	852103002487

Figure 1: Part Number List

### Bluetooth Version

The new headset will support both BLE and Bluetooth. PC, Mac, and Android will have access to both Bluetooth Classic and BLE. For iOS, it will only have access to BLE.

- MWM: Bluetooth 2.0 Supports only Bluetooth Classic.
- MWM+: Bluetooth 4.0 Supports both Bluetooth Classic and BLE.

### TGAM

Minor PCB changes were made to accommodate the new features for the Bluetooth module.

- MWM: TGAM2.8
- MWM+: TGAM2.9A

### MFi Support

Since the connection for iOS has transitioned to BLE, MFi will not be required.

- MWM: MFi Support Required

- MWM+: MFi Support is not required.

## Frequency

The new headset will have a new feature of changing the notch frequency in the headset. A sticker will be attached to the headset that will lead the user to the tutorial app that allows you to configure the notch frequency

- MWM: Static Notch Filter set to either 50 or 60Hz.
- MWM+: Switchable via Tutorial App.



Figure 2: Sticker Image



Figure 3: Sticker Location



## Power/Pairing Button

The new headset no longer needs to be placed into pairing mode. When the headset is disconnected and turned on, it is always in pairing mode.

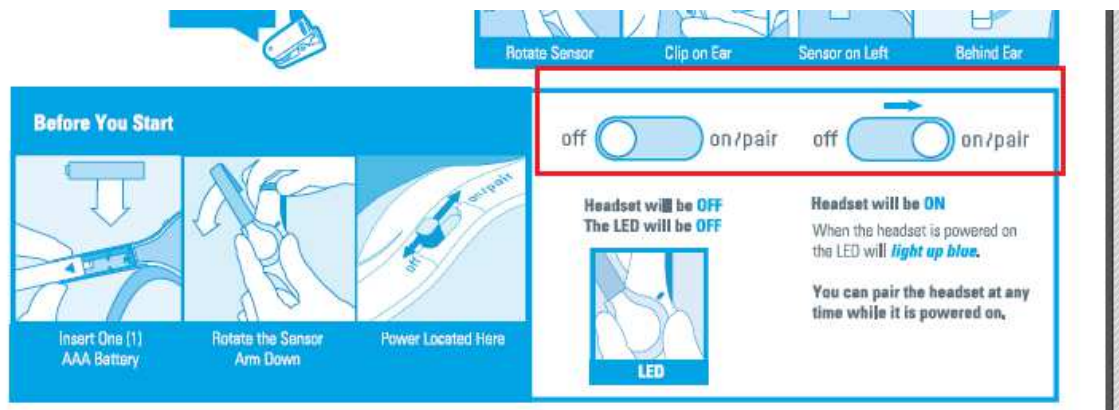


Figure 4: Button

## LED Indicator

The new headset no longer blinks when it is disconnected, it will be a solid Blue LED, even if it is not connected.

## CD Version

Please see the updated CD versions below

- Brainwave Starter Kit CD: v1.0.2
- MyndPlay DVD: v1.0.2
- Focus Pocus CD: v2.0.35

## Quick Start Guide (QSG)

The QSG was updated to include directions to connect the headset specifically in Windows 10&8, Mac OSX, iOS and Android. Please see the attached QSG.

## Headset Mylar

The mylar on the headset was updated with a + (plus) sign so that the two headset can be distinguished.





Figure 5: Update Mylar



# Windows Setup

**Note** Do not insert the applications disc yet. You will need to pair the device successfully first.

- 1 Turn on the headset. The blue LED will turn on. **You can pair the device at anytime.**
- 2 For **WINDOWS 10:**
  - a Click **Settings**
  - b Click **Devices**
  - c Click **Bluetooth**
  - d Select **MindWave Mobile** and click **Pair**. If you see multiple devices named **MindWave Mobile**, select the option with a headset icon.  
  - e If it requires a pass key, please enter **0000**
- For **WINDOWS 8 & 8.1:**
  - a Click **Settings, Control Panel** then
  - b Click **Add Device**
  - c Select **MindWave Mobile** and click **Next**
  - d It may take several minutes to install necessary files on your system
  - e If it requires a pass key, please enter **0000**
- For **WINDOWS 7:**
  - a Click **Start**, then **Control Panel**
  - b Click **Add Device**
  - c Select **MindWave Mobile** click **Next**
  - d Click **Close** to complete pairing
  - e If it requires a pass key, please enter **0000**
- For **WINDOWS XP:**
  - a Click **Start**, then **Control Panel**
  - b Click **Bluetooth Devices**
  - c Select **Devices** click **Add**
  - d Check **"My device is setup and ready to be found"**
  - e Select **MindWave Mobile** and click **Next**
  - f Select **"Let me choose my own pass key"**, enter **0000**
  - g Click **Finish** to complete pairing

- 3 Once the headset is paired, visit [mindwavemobile.neurosky.com/tutorial](http://mindwavemobile.neurosky.com/tutorial). QR code on page one.
- 4 Follow the on-screen guide to download, install and run the **"MindWave Mobile+ Tutorial"** app to further configure your headset.
- 5 You may now insert the application disc and install your apps. If you don't have a disc drive you can download your apps from [mindwavemobileplus.neurosky.com](http://mindwavemobileplus.neurosky.com). QR code on page one.

 **Travel Note for ALL PLATFORMS** MindWave Mobile is sensitive to different electrical standards used in other countries. If you travel to another country, visit [mindwavemobile.neurosky.com/tutorial](http://mindwavemobile.neurosky.com/tutorial) to reconfigure.

# Quick Start Guide

mindwave  
MOBILE



View the MindWave Mobile+ Tutorial and configuration tools here:  
[mindwavemobile.neurosky.com/tutorial](http://mindwavemobile.neurosky.com/tutorial)

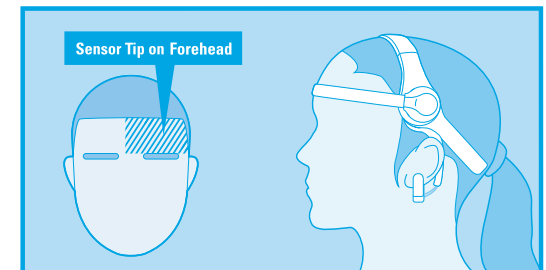
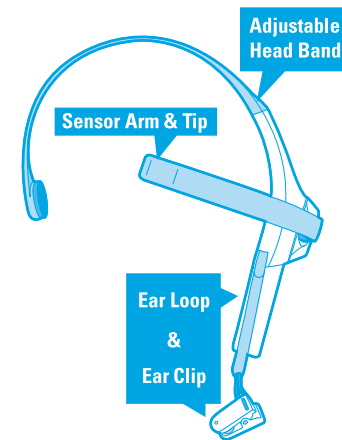


If you don't have a disc drive, you can download the disc contents here:  
[mindwavemobileplus.neurosky.com](http://mindwavemobileplus.neurosky.com)

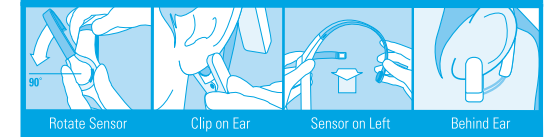
## MindWave Mobile Headset Basics

**How to Wear the MindWave Headset** The headset should rest on the head as shown with the sensor tip touching the forehead, the ear loop behind the ear and the clip attached.

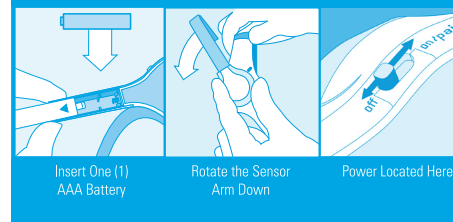
### The Headset



Check these areas to get the best fit



### Before You Start



off  on / pair    off  on / pair

Headset will be **OFF**  
The LED will be **OFF**



Headset will be **ON**

When the headset is powered on the LED will **light up blue**.

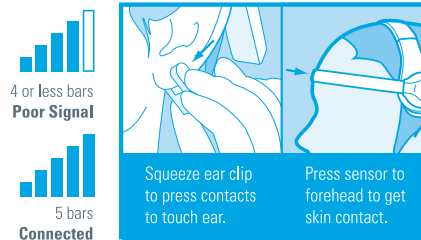
You can pair the headset at any time while it is powered on.

## Signal Status & Meters

**Signal Status** To operate the MindWave with your device you will need to achieve *Bluetooth* pairing with the device first and also get a good EEG signal with the MindWave. These icons show the status of your connection in the upper right hand corner of most NeuroSky apps.



**Quick Fixes & Older Icons** If your device is properly paired and there is a fresh battery in the headset, try these tips to help ensure good EEG connection. Older applications may use the signal status icons below.



**eSense Meters** The meters are gauges of certain mental states that the MindWave can detect. You can try to control them to cause action in an app, or the app can react to how you happen to be feeling in the moment.



### Attention / Focus

- Identify and maintain a single thought
- Stare at a specific object
- Focus on something you like
- Calculate math
- Listen intently to someone talking



### Meditation / Relaxation

- Take a deep breath and slowly exhale
- Deliberately relax all muscles
- Clear mind of any specific thoughts
- Let mind wander and drift
- Close eyes



### Blink

- Blink eyes as naturally as possible
- You may need to blink harder or softer to control certain things

## iOS Setup

- 1 Turn on the headset. The **blue LED** will turn on.
- 2 Visit [mindwavemobile.neurosky.com/tutorial](http://mindwavemobile.neurosky.com/tutorial). You can use the QR code on the first page of this guide to easily navigate there.
- 3 Follow the on-screen guide to download, install and run the "**MindWave Mobile+ Tutorial**" app, then follow instructions from the app to further configure your headset.
- 4 Go to the NeuroSky Store at <http://store.neurosky.com/collections/apps/ios> to download apps.

## Android Setup

- 1 Turn on the headset. The blue LED will turn on. **You can pair the device at anytime.**
- 2 Refer to your Android *Bluetooth*™ pairing procedure. Select "**MindWave Mobile**" device when it appears. Enter "**0000**" as the *Bluetooth*™ authentication key if prompted.
- 3 Once the headset is paired, visit [mindwavemobile.neurosky.com/tutorial](http://mindwavemobile.neurosky.com/tutorial). You can use the QR code on the first page of this guide to easily navigate there.
- 4 Go to the Android Market then search for "**NeuroSky**" or "**MindWave Mobile**" to download apps.

## Mac OS X Setup

**Note** Do not insert the application disc yet. You will need to pair the device successfully and connect first. Please also ensure that you are running OS X version 10.5.8 or later with an Intel processor, and that you have **Administrator Privileges**. Please also ensure that all antivirus and firewall programs are disabled during installation.

- 1 Turn on the headset. The blue LED will turn on. **You can pair the device at anytime.**
- 2 Proceed with pairing procedure.
 

For <b>Mac OS X 10.7.5 ~ 10.8:</b>		
<b>a</b> Open <b>System Preferences</b>	<b>b</b> Click <b>Bluetooth</b> icon	<b>c</b> Click on the " <b>+</b> " icon
<b>d</b> If asked to " <b>Select Device Type</b> " choose <b>Any Device</b>	<b>e</b> Click <b>Passkey Options</b> . Set to "Use a specific passkey"	<b>f</b> Select <b>MindWave Mobile</b> and click <b>Next</b>
<b>g</b> Enter <b>0000</b> if prompted for passkey	<b>h</b> Use the <b>Default</b> setting if asked about services	<b>i</b> Click <b>Close</b> to complete pairing
For <b>Mac OS X 10.9 ~ 10.10.4:</b>		
<b>a</b> Open <b>System Preferences</b>	<b>b</b> Click <b>Bluetooth</b> icon	<b>c</b> Select <b>MindWave Mobile</b>
<b>d</b> Click <b>Pair</b> to complete pairing ( <b>Ensure that your Bluetooth is turned on</b> )		

- 3 Once the headset is paired, visit [mindwavemobile.neurosky.com/tutorial](http://mindwavemobile.neurosky.com/tutorial). QR code on page one. *\*MindWave Mobile will show as "Connected" after paired in first few seconds, then turn to "Not Connected". The status will switch back to "Connected" automatically when you start a MindWave Mobile App.*
- 4 Follow the on-screen guide to download, install and run the "**MindWave Mobile+ Tutorial**" app to further configure your headset.
- 5 You may now insert the application disc and install your apps. If you don't have a disc drive you can download your apps from [mindwavemobileplus.neurosky.com](http://mindwavemobileplus.neurosky.com). QR code on page one. *\*Open your disc drive folder and double-click on "Prerequisites.pkg". After Prerequisites installation is complete double-click "Setup.pkg" to begin the installation process.*